

Vandal-resistant and weather proof TTYs are available for outdoor use, including at exterior-only sites such as highway rest areas and parks. (Since outdoor models were not available when ADAAG was first published, it does not currently address exterior installations but will likely do so in future updates.)

Recommendation: When buying or specifying a TTY to satisfy ADAAG or other ADA requirements, it is helpful to consider:

- **Power Supply** TTYs integrated with pay phones are permanently wired to the power system. Most portable devices require a standard 110 volt receptacle near the phone.
- **Display** Most TTYs use either a back lit LCD display or an LED display. The number of characters in the display at one time may vary from 1 line (20 characters) to 2 lines (80 characters). Since it can be difficult to write down information as it is read, the 2-line display can be helpful.
- **Connection to Phones and Phone Lines** When selecting a TTY with acoustic couplers, consider the design of telephone handsets. Most couplers are designed to fit standard rounded handsets like those usually found on pay phones. TTYs that connect directly to phone lines do not require coupling through the telephone handset. Where phone systems are digital, a special connector (digital-analog converter) is needed and can be obtained from a phone provider.

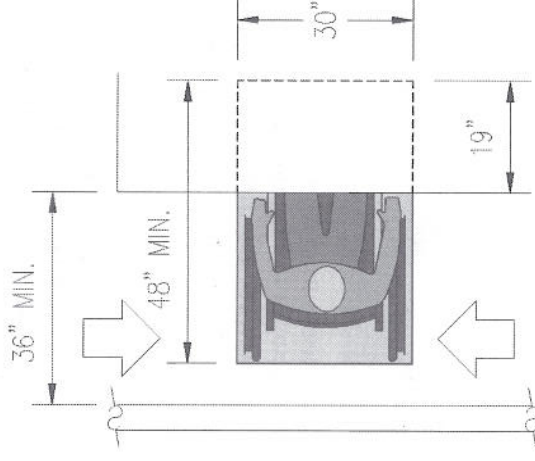
Fixed or Built-in Seating and Tables [4.32]

Scoping [4.1.3(18)]

Access is required to at least 5% of fixed or built-in seating and tables.

Seating [4.32.2] and Knee Clearance [4.32.3]

Knee space at least 27 inches high is required for a depth of 19 inches. The over-the-surface reach is limited to 25 inches if at least this much space is available below for knees and toes; (the forward seated reach may not extend beyond the toes). Maneuvering space is important where turning is required into the space.



Height of Tables or Counters [4.32.4]

Counter and table surface heights (28 to 34 inches) should be specified in consideration of the intended use. A height at the lower end of this range is generally preferable for surfaces used for extended periods of time (study carrels, dining counters, kitchen counters in dwelling units) as opposed to those used briefly or intermittently (breakroom counters, hotel room kitchenette counters). While 34 inches is the specified maximum for an accessible counter, the entire counter is not required to be accessible. A height of 36 inches, where necessary to accommodate below counter appliances, may be acceptable in limited use areas such as employee breakrooms, as long as a portion of the counter is accessible. (This is consistent with counters in business and mercantile facilities since customer use is limited to simple activities like writing checks or signing receipts.)