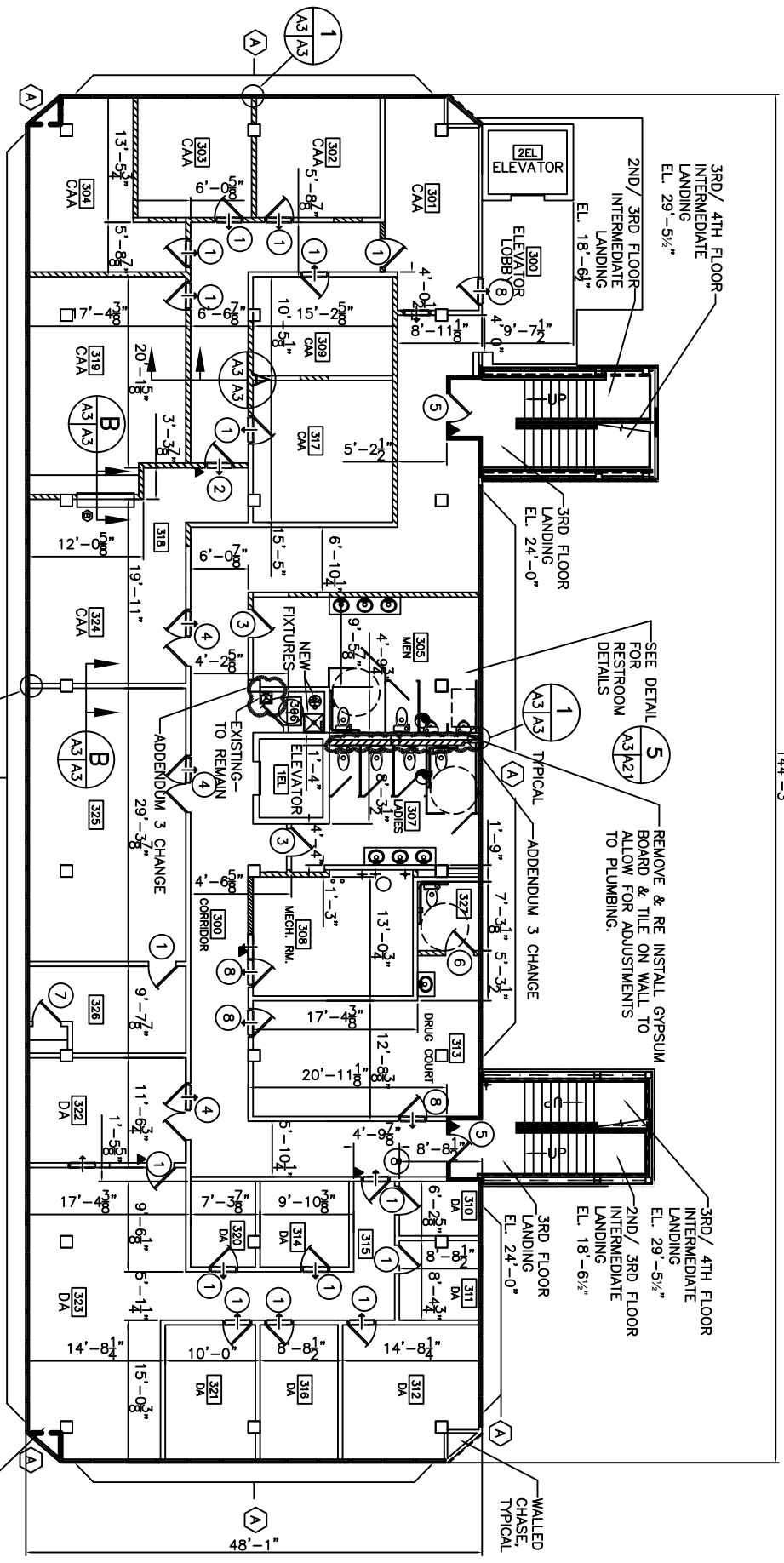


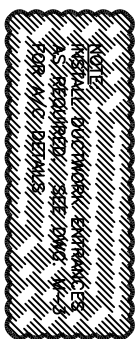
144'-3"



SEE DETAIL 5 FOR RESTROOM DETAILS

REMOVE & RE INSTALL GYPSUM BOARD & TILE ON WALL TO ALLOW FOR ADJUSTMENTS TO PLUMBING.

TYPICAL
THIRD FLOOR PLAN
 SCALE: 1/8" = 1'-0"



SEE DWG. S-2 FOR NEW CONCRETE FLOOR, THIS AREA [TYPICAL 2 PLACES EA FLOOR]