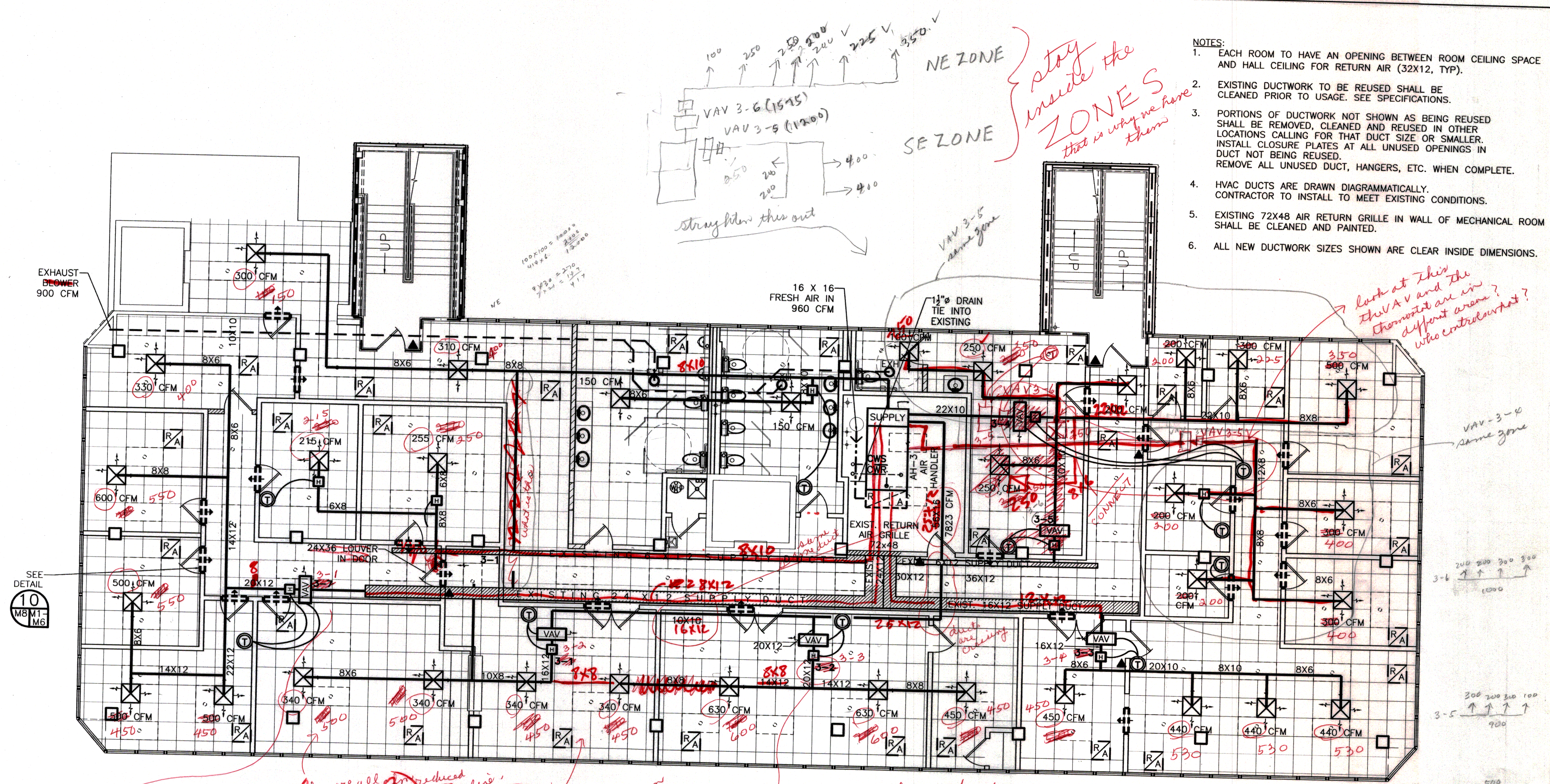


- NOTES:
1. EACH ROOM TO HAVE AN OPENING BETWEEN ROOM CEILING SPACE AND HALL CEILING FOR RETURN AIR (32X12, TYP).
 2. EXISTING DUCTWORK TO BE REUSED SHALL BE CLEANED PRIOR TO USAGE. SEE SPECIFICATIONS.
 3. PORTIONS OF DUCTWORK NOT SHOWN AS BEING REUSED SHALL BE REMOVED, CLEANED AND REUSED IN OTHER LOCATIONS CALLING FOR THAT DUCT SIZE OR SMALLER. INSTALL CLOSURE PLATES AT ALL UNUSED OPENINGS IN DUCT NOT BEING REUSED. REMOVE ALL UNUSED DUCT, HANGERS, ETC. WHEN COMPLETE.
 4. HVAC DUCTS ARE DRAWN DIAGMATICALLY. CONTRACTOR TO INSTALL TO MEET EXISTING CONDITIONS.
 5. EXISTING 72X48 AIR RETURN GRILLE IN WALL OF MECHANICAL ROOM SHALL BE CLEANED AND PAINTED.
 6. ALL NEW DUCTWORK SIZES SHOWN ARE CLEAR INSIDE DIMENSIONS.



THIRD FLOOR MECHANICAL PLAN
 SCALE: 3/16" = 1'-0"

LEGEND

- EXISTING HVAC SUPPLY DUCT
- NEW HVAC SUPPLY DUCT
- RETURN AIR REGISTER TITUS #TMSA-AA 24/24 500 FPM MECH. VEL., TOT. PRESS. .032" H2O (ROOM TO CEILING) w/ clasp neck
- RETURN AIR CASED OPENING IN WALL (ROOM TO CEILING) hall ceiling
- THERMOSTAT
- ELECTRIC DUCT HEATER
- VARIABLE AIR VOLUME DAMPER
- EXHAUST BLOWER

3RD FLOOR HVAC EQUIPMENT - VAV								
ROOM	VAV NO.	COOLING BTU/H			HEATING		CARRIER BYPASS VAV	
		SEN	LAT	TOTAL	CFM	BTU		KW
324	3-1	40,249	3,824	44,073	1,540	14,220	4.2	35K-14
325	3-2	17,166	2,868	20,034	940	8,810	2.6	35K-12
323	3-3	12,997	2,868	15,865	470	3,240	1.0	35K-12
313	3-4	18,898	3,824	22,722	680	10,095	3.0	35K-12
401	3-5	17,809	1,812	19,621	670	7,110	2.0	35K-10
313	3-6	33,711	4,760	38,471	1,260	12,825	3.7	35K-12
308	3-7	23,830	3,824	27,654	890	11,250	3.3	35K-8
308	3-8	35,407	4,780	40,187	1,330	23,850	8.0	35K-10
308	3-9	47,937	6,994	54,931	2,000	21,592	6.3	35K-12
308	3-10	16,930	3,824	20,754	600	9,545	3.0	35K-8

NOTE: DO NOT CHANGE VAV NUMBERS THE NUMBERS ARE PUT THE RIGHT EQUIPMENT IN THE CORRECT LOCATION

REVISED: 04-09-07ab
 REVISED: 03-30-07ab
 REVISED: 03-22-07