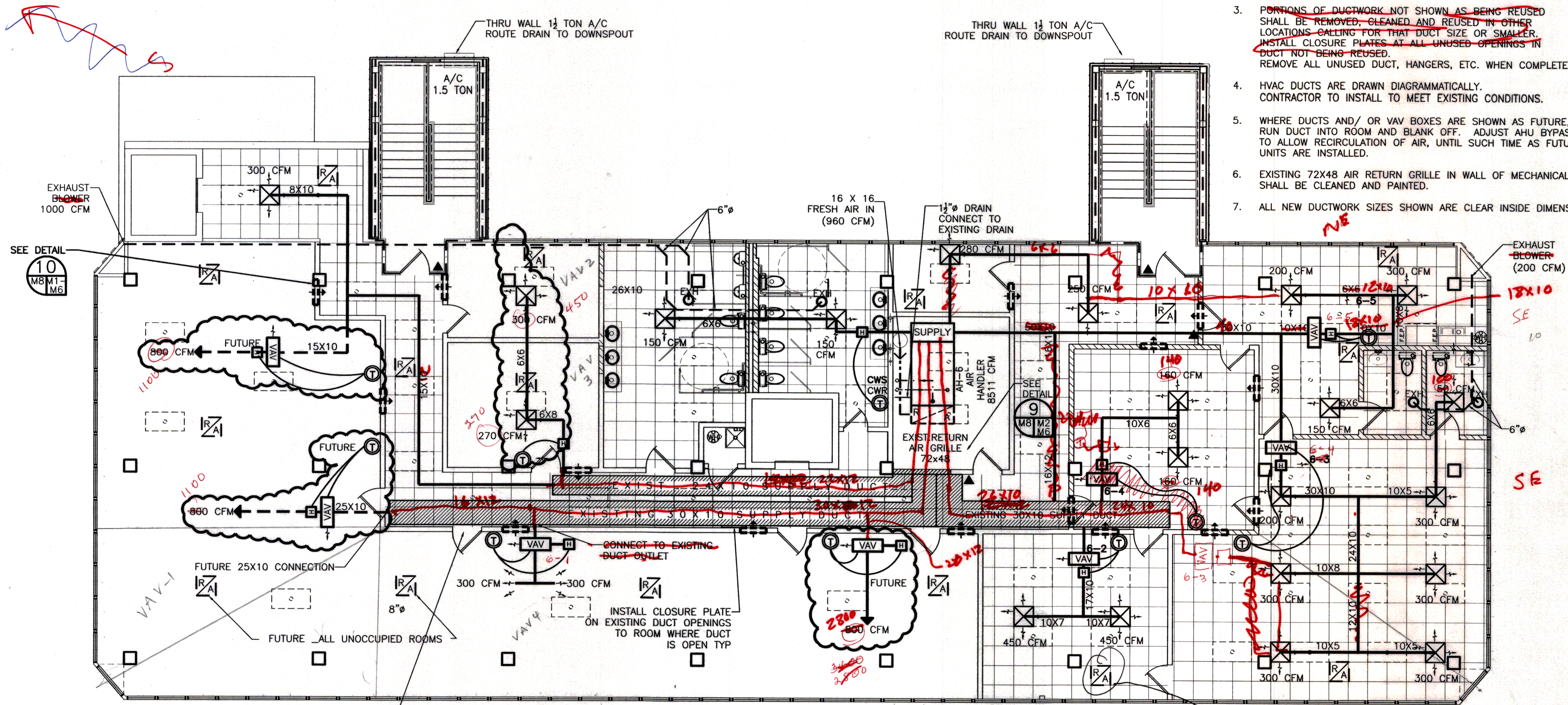


- NOTES:
- EACH ROOM TO HAVE AN OPENING BETWEEN ROOM CEILING SPACE AND HALL CEILING FOR RETURN AIR (32X12 TYP). (MAN. 1-32X12)
 - EXISTING DUCTWORK TO BE REUSED SHALL BE CLEANED PRIOR TO USAGE. SEE SPECIFICATIONS.
 - PORTIONS OF DUCTWORK NOT SHOWN AS BEING REUSED SHALL BE REMOVED, CLEANED AND REUSED IN OTHER LOCATIONS CALLING FOR THAT DUCT SIZE OR SMALLER. INSTALL CLOSURE PLATES AT ALL UNUSED OPENINGS IN DUCT NOT BEING REUSED. REMOVE ALL UNUSED DUCT, HANGERS, ETC. WHEN COMPLETE.
 - HVAC DUCTS ARE DRAWN DIAGRAMMATICALLY. CONTRACTOR TO INSTALL TO MEET EXISTING CONDITIONS.
 - WHERE DUCTS AND/ OR VAV BOXES ARE SHOWN AS FUTURE, RUN DUCT INTO ROOM AND BLANK OFF. ADJUST AHU BYPASS TO ALLOW RECIRCULATION OF AIR, UNTIL SUCH TIME AS FUTURE UNITS ARE INSTALLED.
 - EXISTING 72X48 AIR RETURN GRILLE IN WALL OF MECHANICAL ROOM SHALL BE CLEANED AND PAINTED.
 - ALL NEW DUCTWORK SIZES SHOWN ARE CLEAR INSIDE DIMENSIONS.

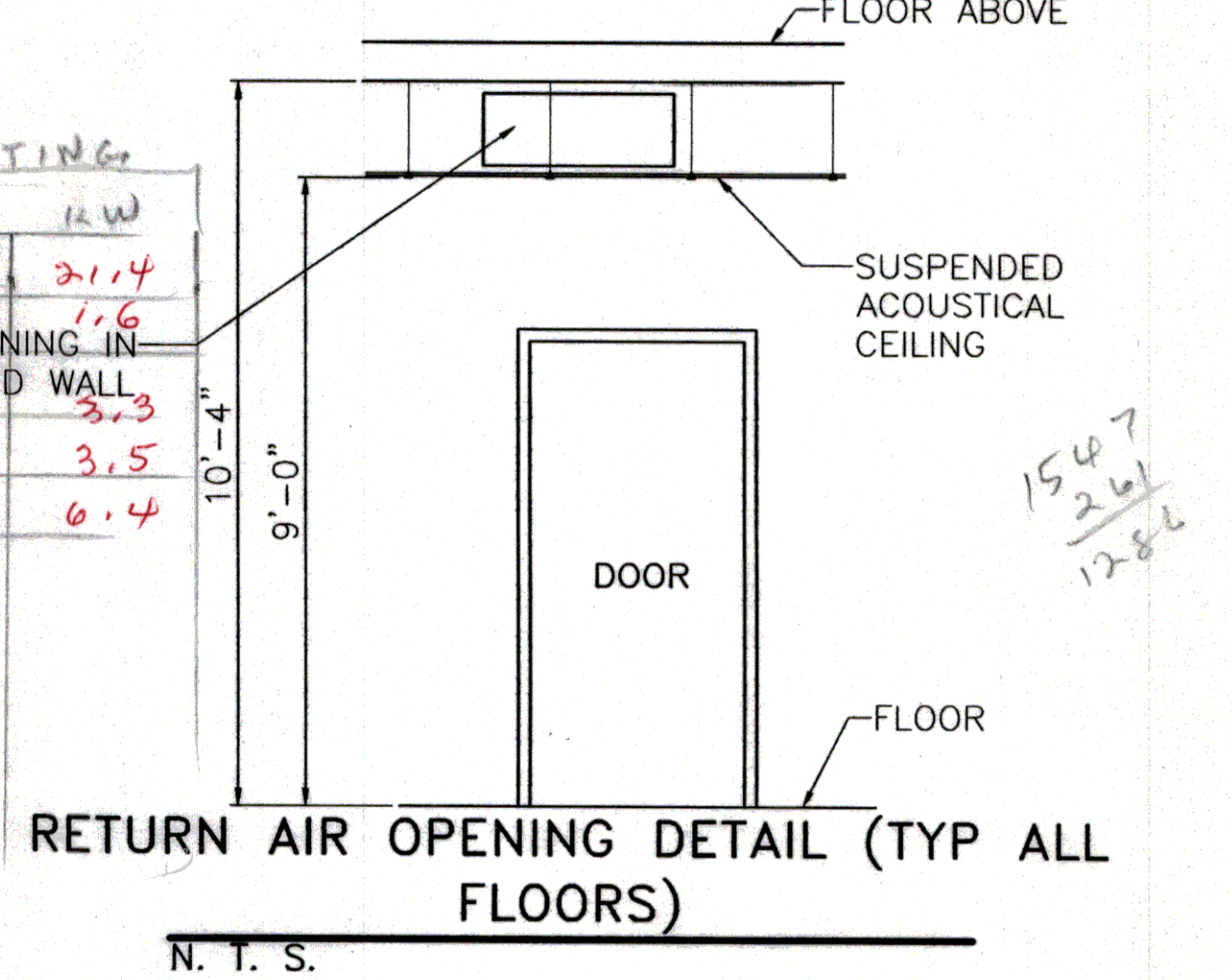


SIXTH FLOOR MECHANICAL PLAN
 SCALE: 3/16" = 1'-0"

6TH FLOOR HVAC EQUIPMENT-VAV								
ROOM	VAV NO.	COOLING BTUH			HEATING		CARRIER BYPASS VAV	
		SEN	LAT	TOTAL	CFM	BTU		KW
-	6-1	-	-	-	-	-	FUTURE	
612	6-2	23,596	2,868	26,464	894	9,040	2.6	35K-8 8
613	6-3	46,478	19,120	65,598	1,530	37,595	11.0	35K-12 10
610	6-4	9,016	1,912	10,928	328	3,060	1.0	35K-6 8
608	6-5	15,853	3,824	19,677	568	8,155	2.4	35K-6 10
613	6-3	46,478	19,120	65,598	1,530	37,595	11.0	35K-12
610	6-4	9,016	1,912	10,928	328	3,060	1.0	35K-6
608	6-5	15,853	3,824	19,677	568	8,155	2.4	35K-6

LAST THREE ADDED NEED CORRECTIONS

COOLING				HEATING		
SEN	LAT	TOT.	CFM	BTU	KW	
169,468	31,928	201,396	6,327	72,925	21.4	
23,264	3,684	26,948	878	5,380	1.6	
27,607	3,684	31,291	1,052	11,400	3.3	
19,325	4,912	24,237	703	11,920	3.5	
32,000	8,596	40,596	1,159	21,860	6.4	



LEGEND

- EXISTING HVAC SUPPLY DUCT
 - NEW HVAC SUPPLY DUCT
 - HVAC AIR REGISTER 24 X 24
 - RETURN AIR REGISTER TITUS #TMSA-AA 24/24 500 FPM MECH. VEL., TOT. PRESS. .032" H2O (ROOM TO CEILING) w/ damper
 - RETURN AIR CASSED OPENING IN WALL (ROOM TO CEILING) 32x12"
 - THERMOSTAT
 - ELECTRIC DUCT HEATER
 - VARIABLE AIR VOLUME DAMPER
 - EXHAUST BLOWER
- Handwritten notes: 'return grille to be situs #50 w/ 1/2 x 1/2 core log in' and 'log in'.

REVISED: 04-09-07ab
 REVISED: 03-30-07ab
 REVISED: 03-22-07