

LEGEND

- | | | | |
|---|--------------------|---|-----------------------|
| ⊙ | SEWER MANHOLE | ⊙ | GAS MANHOLE |
| ⊙ | SEWER CLEANOUT | ⊙ | GAS METER |
| — | SEWER LINE | ⊙ | GAS VALVE |
| ⊙ | DRAIN MANHOLE | — | GAS LINE |
| ⊙ | DRAIN INLET ROUND | ⊙ | TELEPHONE MANHOLE |
| ⊙ | DRAIN INLET SQUARE | ⊙ | TELEPHONE PEDESTAL |
| ⊙ | DRAIN CLEANOUT | — | UNDERGROUND TELEPHONE |
| ⊙ | CATCH BASIN | — | OVERHEAD TELEPHONE |
| — | DRAIN LINE | ⊙ | ELECTRIC MANHOLE |
| ⊙ | WATER MANHOLE | ⊙ | WOOD POLE |
| ⊙ | WATER METER | — | OVERHEAD ELECTRIC |
| ⊙ | WATER VALVE | — | UNDERGROUND ELECTRIC |
| ⊙ | FIRE HYDRANT | ⊙ | LIGHT STANDARD |
| — | WATER LINE | ⊙ | SIGN |
| — | NITROGEN LINE | ⊙ | TREE |
| | | ⊙ | ELECTRIC BOX |
| | | ⊙ | GUARD POST |

- REFERENCE MAPS FOR UNDERGROUND**
- 1) SITE PLAN POTABLE WATER REF. NO. 3
DWG. NO. 12600-R003 DATED 8/10/65
 - 2) SITE PLAN SANITARY SEWAGE SYSTEM REF. NO. 3
DWG. NO. 12F00-R003 DATED 8/2/65
 - 3) SITE PLAN NATURAL GAS LINES REF. NO. 3
DWG. NO. 12B00-R003 DATED 8/9/65
 - 4) SITE PLAN NITROGEN SYSTEM REF. 3
DWG. NO. 11F00-R003 DATED 8/1/66
 - 5) SITE PLAN HIGH PRESSURE AIR LINES REF. 3
DWG. NO. 11H00-R003 DATED 8/1/66

LANDMARK SURVEYING, INC.
1513 Kuebel Street
Harahan, Louisiana 70123
Fax: 504-734-8357 Phone: 504-733-3303



CONTOURS SHOWN ARE AT 0.5 INTERVALS AND ARE NAVD 88 DATUM

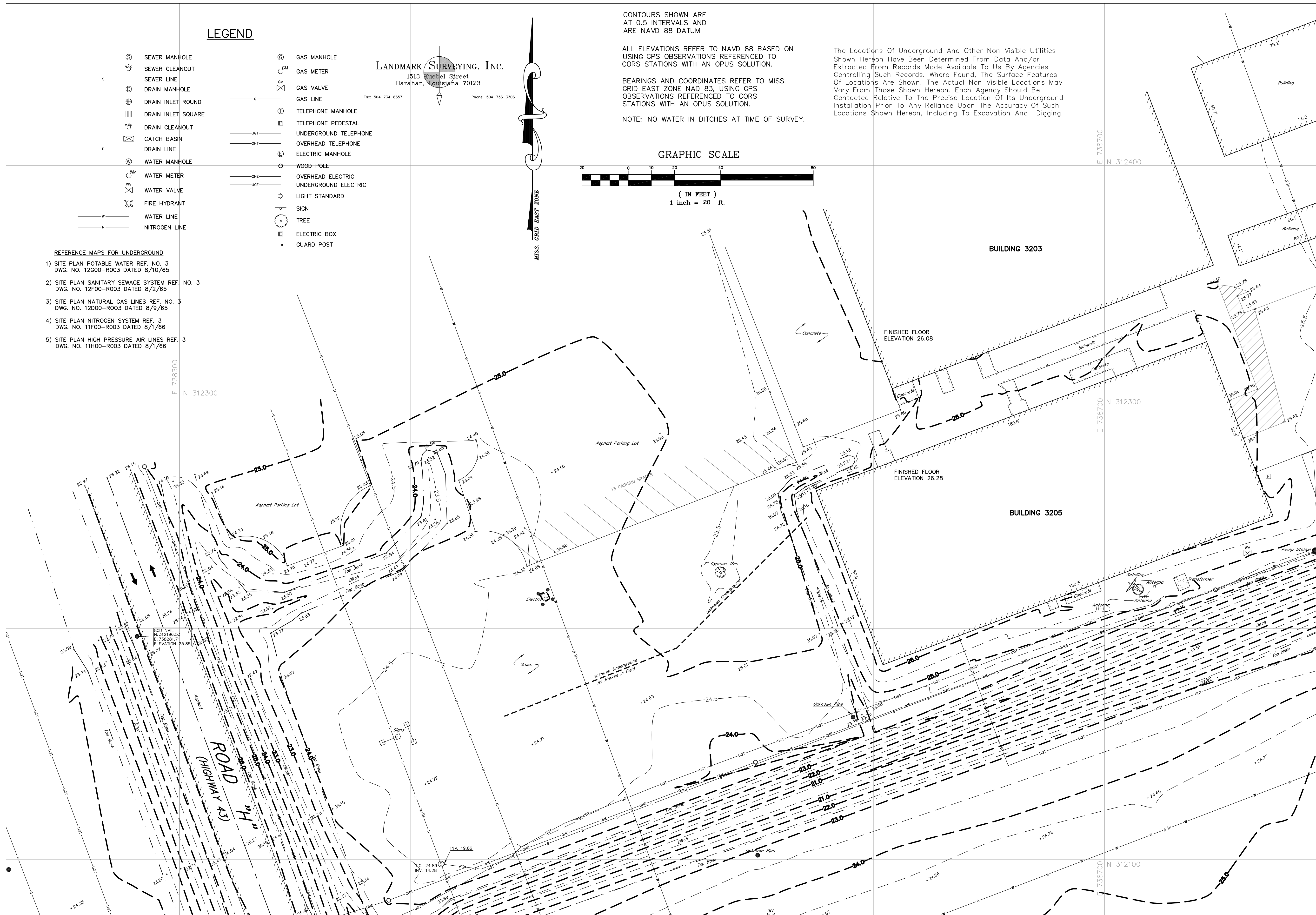
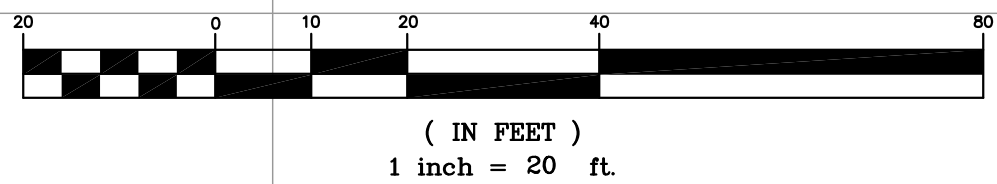
ALL ELEVATIONS REFER TO NAVD 88 BASED ON USING GPS OBSERVATIONS REFERENCED TO CORS STATIONS WITH AN OPUS SOLUTION.

BEARINGS AND COORDINATES REFER TO MISS. GRID EAST ZONE NAD 83, USING GPS OBSERVATIONS REFERENCED TO CORS STATIONS WITH AN OPUS SOLUTION.

NOTE: NO WATER IN DITCHES AT TIME OF SURVEY.

The Locations Of Underground And Other Non Visible Utilities Shown Hereon Have Been Determined From Data And/or Extracted From Records Made Available To Us By Agencies Controlling Such Records. Where Found, The Surface Features Of Locations Are Shown. The Actual Non Visible Locations May Vary From Those Shown Hereon. Each Agency Should Be Contacted Relative To The Precise Location Of Its Underground Installation Prior To Any Reliance Upon The Accuracy Of Such Locations Shown Hereon, Including To Excavation And Digging.

GRAPHIC SCALE



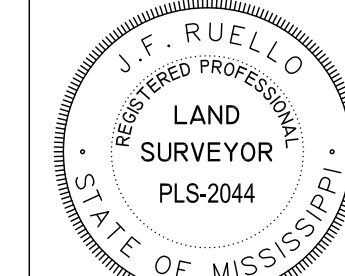
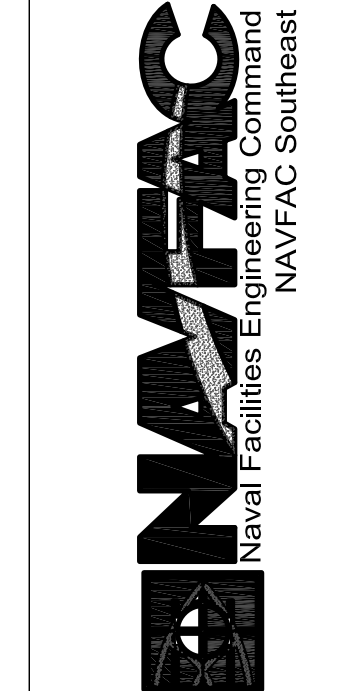
MATCH LINE C

MATCH LINE A



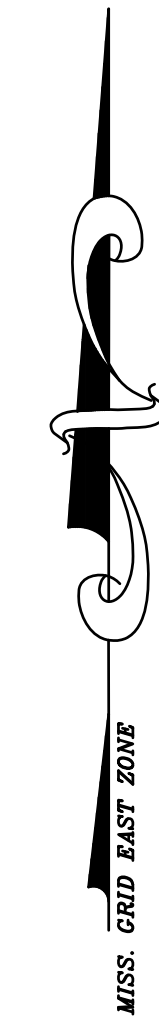
DESIGNER	DRAWN BY	DATE	APPROVED
REVISIONS	DESCRIPTION	DATE	BY

STENNIS SPACE CENTER, MS
TOPOGRAPHIC SURVEY OF A PORTION OF STENNIS SPACE CENTER (NASA) NATIONAL DATA BUOY CENTER RENOVATION & EXPANSION HANCOCK COUNTY, MISSISSIPPI

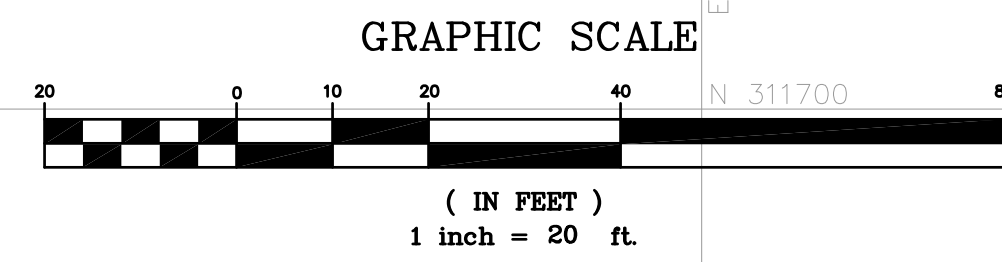


RECORD DRAWING DATE
CODE I.D. NO.
DRAWING SIZE: D
SPEC. NO. 06-
CONSTRN. CONTR. NO. CCN
NAVFAC DRAWING NO.

SHEET 1 OF 6



MATCH LINE A



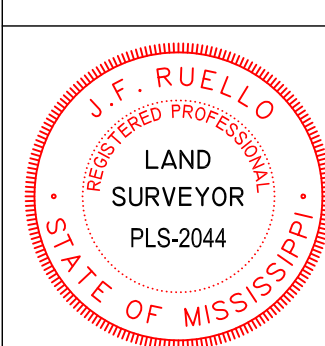
MATCH LINE B

MATCH LINE C

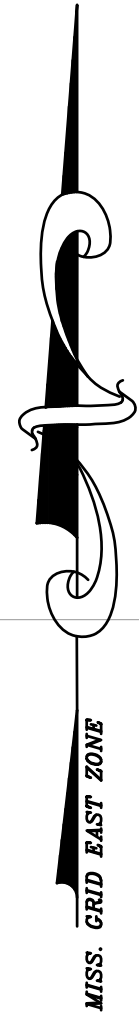


DESIGNER:	DRAWN BY:	DATE:	APPROVED:
REVIEWER:	PROJECT LEADER:	SUBMITTED BY:	NAVFAC TECHNICAL LEAD:

STENNIS SPACE CENTER, MS	LOCATION
TOPOGRAPHIC SURVEY OF A PORTION OF STENNIS SPACE CENTER (NASA) NATIONAL DATA BUOY CENTER RENOVATION & EXPANSION HANCOCK COUNTY, MISSISSIPPI	
DATE:	EFD FOR COMMANDER, NAVFAC



RECORD DRAWING DATE
CODE I.D. NO.
DRAWING SIZE: D
SPEC. NO.
CONSTRN. CONTR. NO.
NAVFAC DRAWING NO.
SHEET 2 OF 6

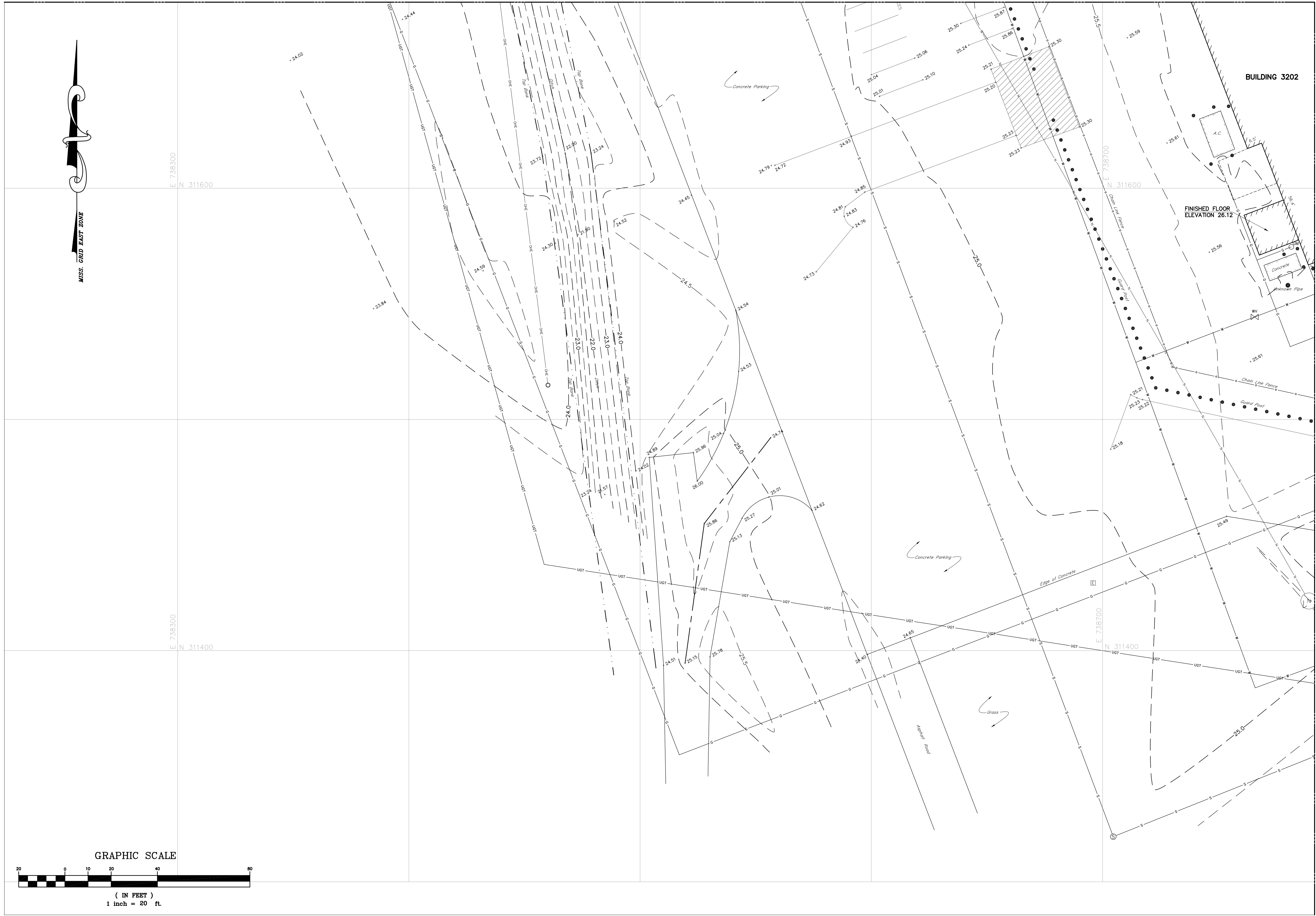
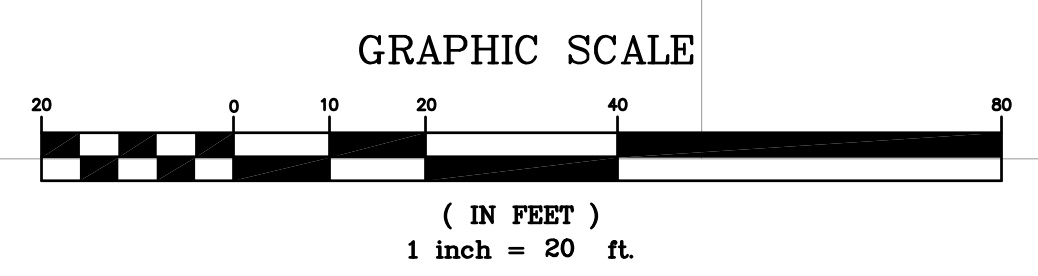


E 738300
N 311600

E 738300
N 311400

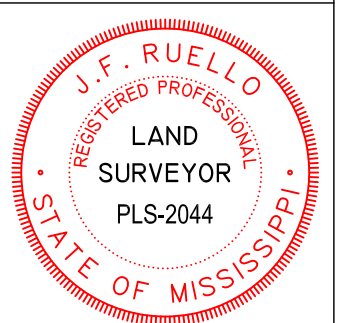
MATCH LINE B

MATCH LINE C

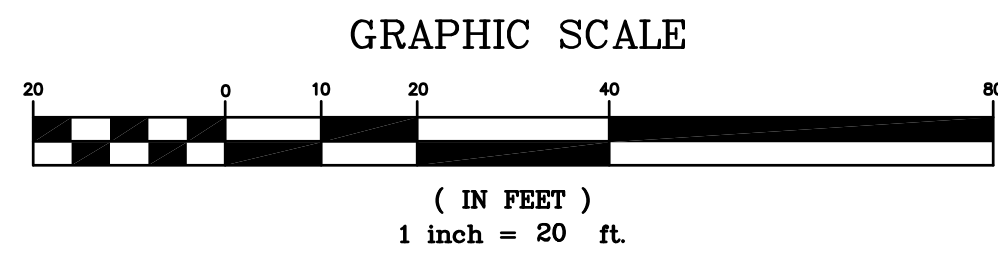
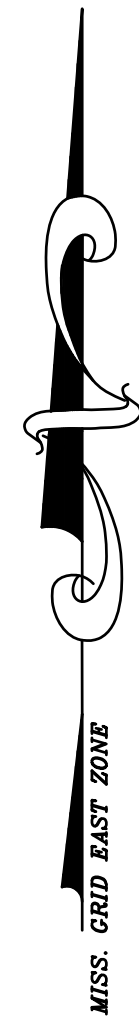


DESIGNER	DATE	APPROV.	REVISIONS

STENNIS SPACE CENTER, MS
TOPOGRAPHIC SURVEY OF A PORTION OF STENNIS SPACE CENTER (NASA) NATIONAL DATA BUOY CENTER RENOVATION & EXPANSION HANCOCK COUNTY, MISSISSIPPI
 APPROVED: _____ DATE: _____ ETD FOR COMMANDER, NAVFAC



RECORD DRAWING DATE
CODE I.D. NO.
DRAWING SIZE: D
SPEC. NO.
CONSTRN. CONTR. NO.
NAVFAC DRAWING NO.
SHEET 3 OF 6



MATCH LINE C

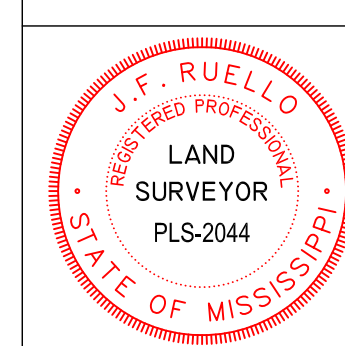
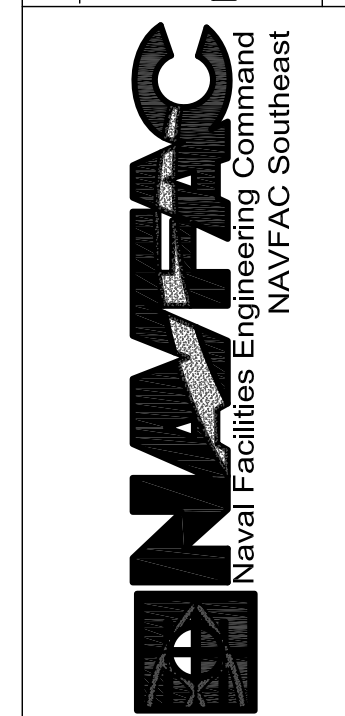


MATCH LINE D



DESIGNER	DRAWN BY	DATE	APPROVED

STENNIS SPACE CENTER, MS LOCATION
TOPOGRAPHIC SURVEY OF A PORTION OF STENNIS SPACE CENTER (NASA) NATIONAL DATA BUOY CENTER RENOVATION & EXPANSION HANCOCK COUNTY, MISSISSIPPI
 APPROVED DATE ETD FOR COMMANDER, NAVFAC



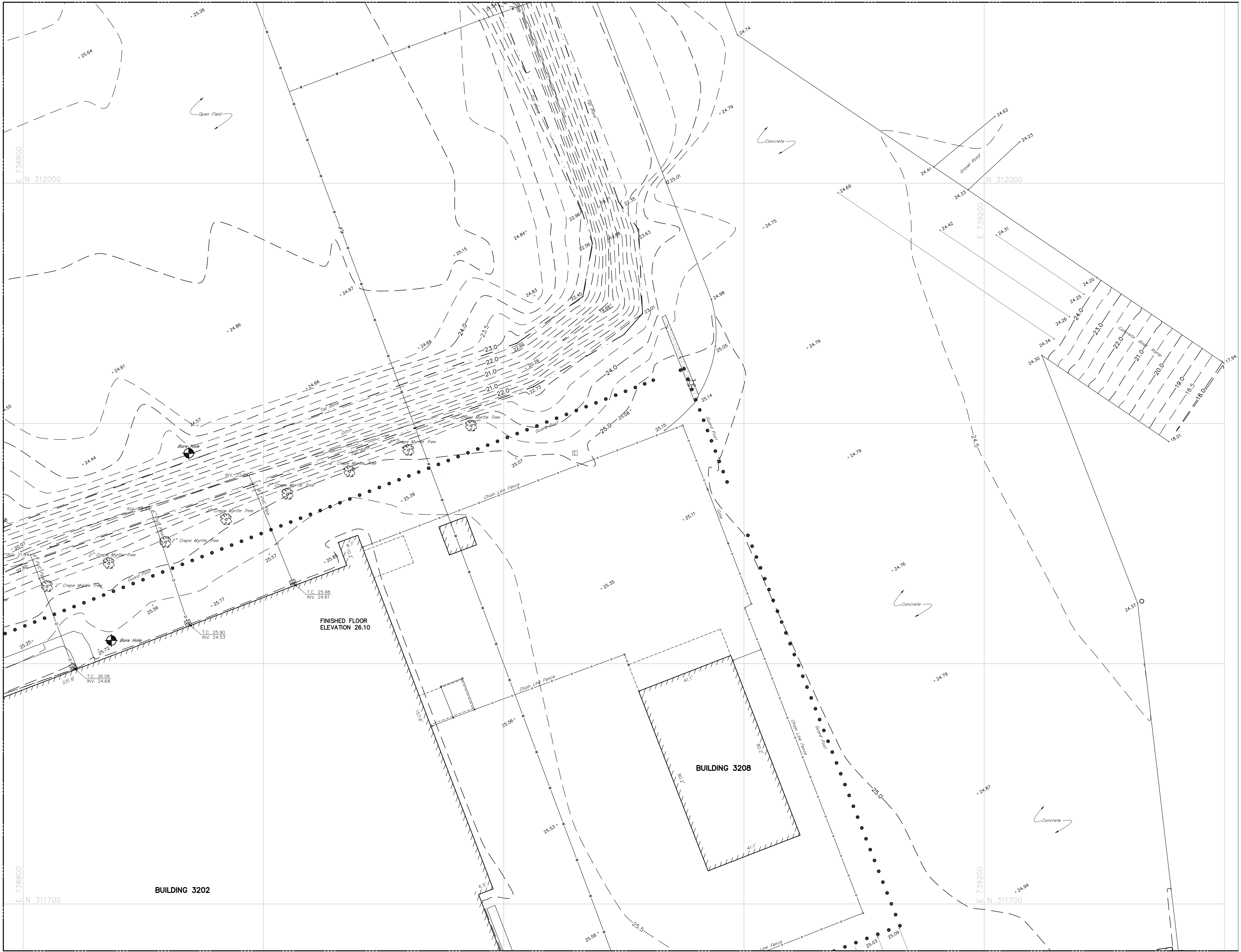
RECORD DRAWING DATE
CODE I.D. NO.
DRAWING SIZE: D
SPEC. NO.
CONSTRN. CONTR. NO. CCN
NAVFAC DRAWING NO.
SHEET 4 OF 6



MATCH LINE C

MATCH LINE D

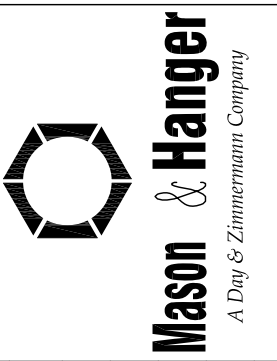
MATCH LINE E



GRAPHIC SCALE



(IN FEET)
1 inch = 20 ft.



DESIGNER	DATE	APPROVED

STENNIS SPACE CENTER, MS LOCATION

TOPOGRAPHIC SURVEY OF A PORTION OF STENNIS SPACE CENTER (NASA) NATIONAL DATA BUOY CENTER RENOVATION & EXPANSION HANCOCK COUNTY, MISSISSIPPI

APPROVED: _____ DATE: _____ ETD FOR COMMANDER, NAVFAC



REVISIONS	DESCRIPTION	DATE	BY	APPROVED

RECORD DRAWING DATE

CODE I.D. NO.

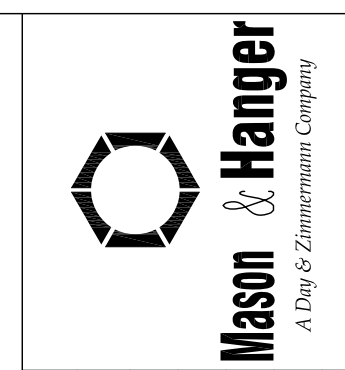
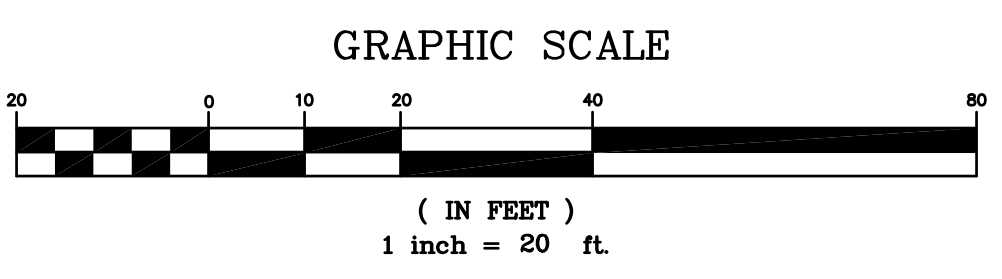
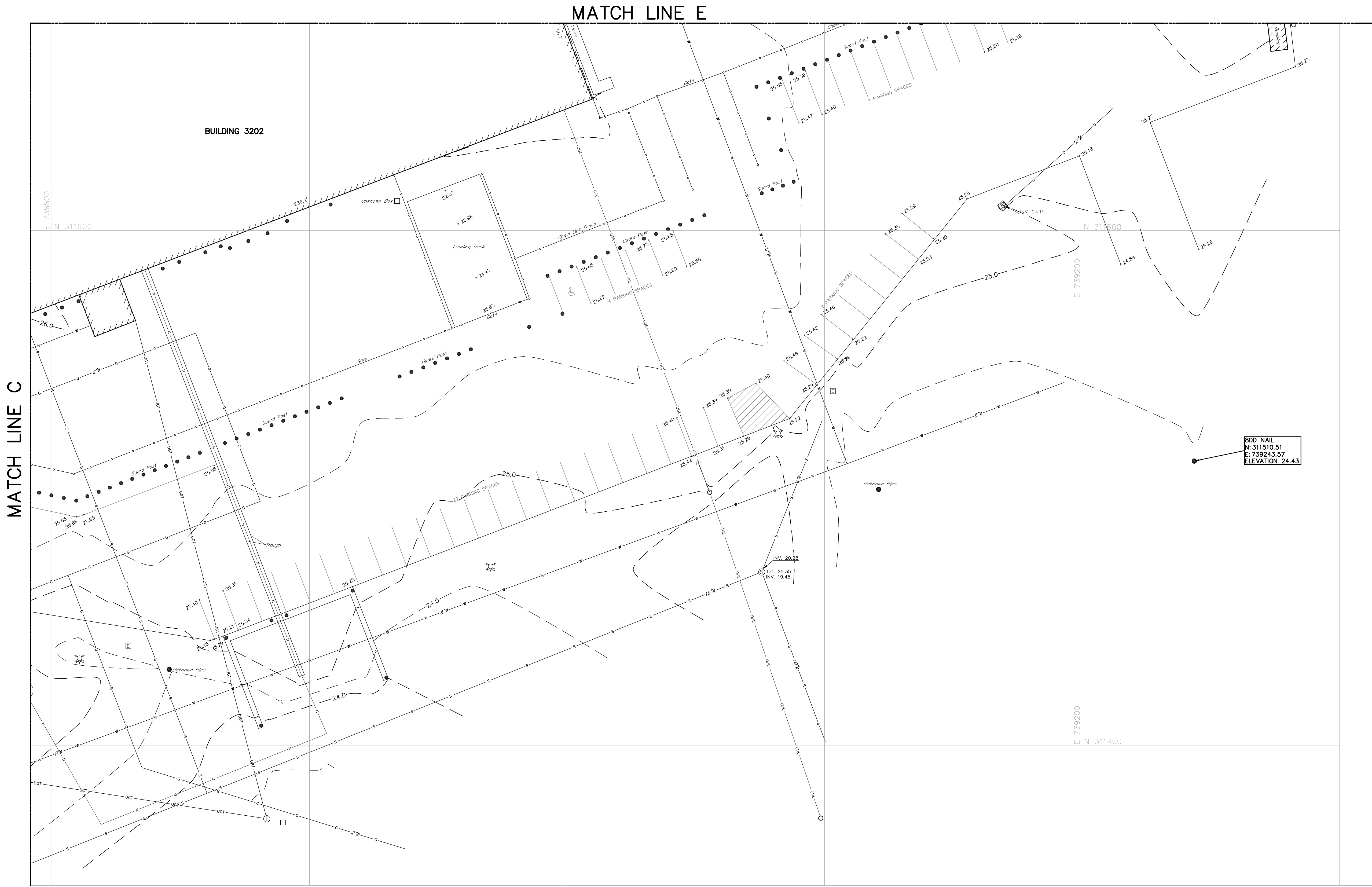
DRAWING SIZE: D

SPEC. NO.

CONSTRN. CONTR. NO.

NAVFAC DRAWING NO.

SHEET 5 OF 6



DESIGNER:	DRAWN BY:	DATE:	APPROVED:

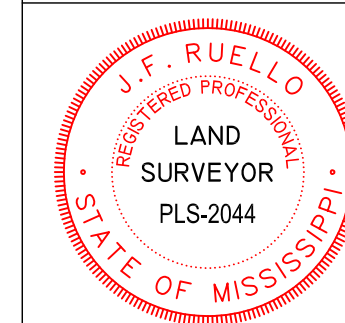
REV.	DESCRIPTION	PREP. BY:	DATE:

STENNIS SPACE CENTER, MS LOCATION

TOPOGRAPHIC SURVEY OF A PORTION OF STENNIS SPACE CENTER (NASA) NATIONAL DATA BUOY CENTER RENOVATION & EXPANSION

HANCOCK COUNTY, MISSISSIPPI

APPROVED: _____ DATE: _____ ETD FOR COMMANDER, NAVFAC



RECORD DRAWING DATE
CODE I.D. NO.
DRAWING SIZE: D
SPEC. NO.
CONSTRN. CONTR. NO. CCN
NAVFAC DRAWING NO.
SHEET 6 OF 6