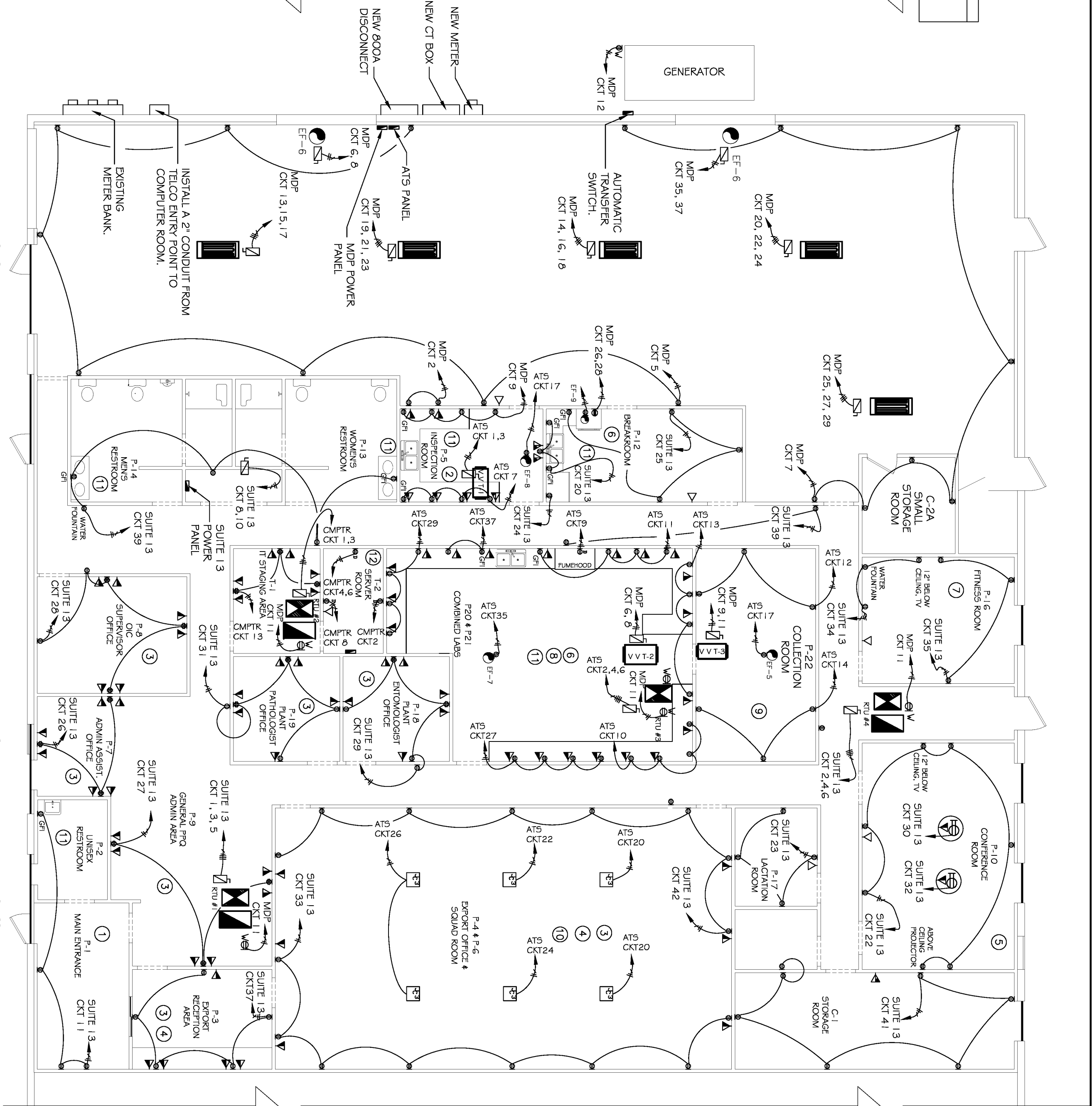


LIGHTING PLAN
SCALE: 1/8" = 1'-0"



POWER PLAN
SCALE: 1/8" = 1'-0"

LEGEND

- ⊞ - POWER PANEL
- ⊞ - EMERGENCY EXIT SIGN
- ➔ - EMERGENCY EXIT SIGN WITH ARROW POINTING DIRECTION OF TRAVEL.
- ⊞ - SWITCH
- ⊞ - 3-WAY SWITCH
- ⊞ - SWITCH WITH DIMMER
- ⊞ - MOTION SENSOR W/ADJUSTABLE DELAY
- ⊞ - QUAD RECEPTACLE.
- ⊞ - DEDICATED DUPLEX OUTLET.
- ⊞ - DEDICATED DUPLEX OUTLET.
- ⊞ - WEATHERPROOF OUTLET AT RIVUS.
- ⊞ - RESIDENTIAL STOVE OUTLET.
- ⊞ - 240V 50AMP
- ⊞ - DISCONNECT SWITCH.
- ⊞ - LIGHT FIXTURE WILL HAVE ONE LAMP HARDWIRED TO OPERATE 24/7. FIXTURE WILL REQUIRE A SEPARATE BALLAST.
- ⊞ - LIGHT FIXTURE WILL HAVE ONE LAMP HARDWIRED TO OPERATE 24/7. FIXTURE WILL REQUIRE A SEPARATE BALLAST.
- ⊞ - V T VARIABLE VOLUME & TEMPERATURE TERMINAL. V V T #1, V V T #2 AND V V T #3 SHALL HAVE HEATING ELEMENTS.
- ⊞ - PHASE (HOT)
- ⊞ - NEUTRAL (GROUND)
- ⊞ - EQUIPMENT GROUNDING
- ⊞ - CUBICLE JUNCTION BOX IN CEILING FOR POWER AND NETWORK. PROVIDE (2) DATA CONNECTIONS, (2) 120 VAC OUTLETS, FOR EACH WORKSTATION LOCATION.
- ⊞ - VOICE ONLY. INSTALL 1/2" CONDUIT FROM JACK TO ABOVE CEILING.
- ⊞ - VOICE / DATA. INSTALL 1/2" CONDUIT FROM JACK TO ABOVE CEILING.
- ⊞ - IN-FLOOR POWER AND DATA POINT TO INSTALL MOUNTMENTS.
- ⊞ - EXHAUST FAN
- ⊞ - WAREHOUSE HEATER: 208V - 6.0 KW; TPI CORPORATION CH-620-3A HEAVY DUTY METAL SHEATH ELECTRIC INFRARED HEATER; MOUNT AT 12' AFF.

ELECTRICAL SHEET NOTES:

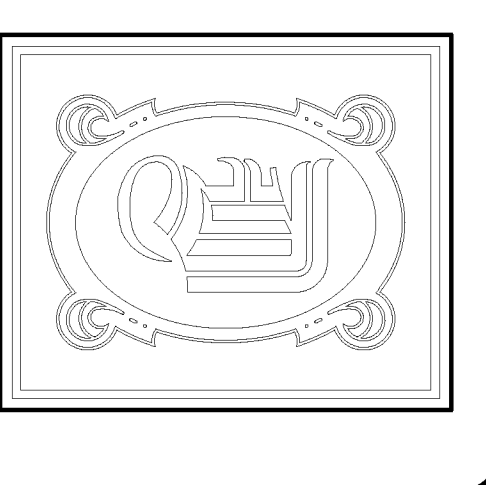
1. LOBBY SHALL HAVE 24 HR. LIGHTING. CONNECT ONE LAMP TO A GENERATOR CIRCUIT.
2. LIGHTING AND EXHAUST FAN SHALL OPERATE ON A OCCUPANCY SENSOR.
3. TASK LIGHTING SHALL BE ON GENERATOR POWER.
4. ALL LIGHTING SHALL BE ON GENERATOR POWER.

ELECTRICAL SHEET NOTES:

1. INSTALL A DOORBELL SYSTEM TO NOTIFY PERSONNEL IN EXPORT OFFICE OF VISITORS/DELIVERY.
2. WALL OUTLETS THIS COUNTER SHALL BE CONNECTED TO GENERATOR POWER. MOUNT DATA AND OUTLETS 6" ABOVE COUNTER HEIGHT.
3. PROVIDE (2) DATA CONNECTIONS, (2) 120 VAC OUTLETS, FOR EACH WORKSTATION LOCATION. PROVIDE (4) DATA CONNECTIONS AND (4) 120 VAC OUTLETS FOR TWO PRINTERS AND ONE FAX MACHINE AT THE CUSTOMERS OPTION.
4. LIGHTING AND WORKSTATION OUTLETS SHALL BE CONNECTED TO GENERATOR POWER. WORKSTATION OUTLETS FOR CUBICLES SHALL ONLY HAVE COMPUTERS CONNECTED. PROVIDE SEPARATE CIRCUIT FOR CONVENIENCE OUTLETS IN CUBICLES.
5. PROVIDE TWO FLUSH-MOUNTED (4) OUTLET UNITS WITH COVERS WITH (5) DATA PORTS PER UNIT. PROVIDE POWER CONNECTIONS FROM ONE UNIT TO CEILING MOUNTED PROTECTOR. VERIFY LOCATIONS WITH OWNER. PROVIDE POWER CONNECTIONS FOR TV AND PROTECTOR SCREEN.
6. PROVIDE GARBAGE DISPOSAL POWER CONNECTION.
7. PROVIDE ELECTRICAL CONNECTIONS FOR ELECTRICALLY POWERED EXERCISE UNITS. PROVIDE POWER FOR TV.
8. ONE DUPLEX 20AMP RECEPTACLE EVERY 3 FT & ABOVE COUNTER HEIGHT WITH NO MORE THAN 4 DUPLEX RECEPTACLES PER INDIVIDUAL 20AMP CIRCUIT. (2) DATA JACKS AT WORKSTATIONS. PROVIDE HOOD TO HAVE DEDICATED 20AMP CIRCUIT. VERIFY WITH EQUIPMENT BEING INSTALLED IF MOTOR IS REMOTE. INSTALL HOOD FOR USDA PROVIDED EQUIPMENT.
9. ALL OUTLETS AND LIGHTS SHALL BE CONNECTED TO GENERATOR POWER.
10. CRAIG RICHTER'S CUBICLE SHALL HAVE ELECTRICAL STRIP OUTLETS TO ACCOMMODATE UP TO 20 BOX PLUGS (NOT A STANDARD PLUG. CHECK WITH OWNER FOR STYLE). VERIFY IF GENERATOR OR REGULAR POWER.
11. ALL RECEPTACLES SHALL BE INSTALLED 6" ABOVE COUNTERTOP. EXCEPT WHERE POWER IS FOR GARBAGE DISPOSAL.
12. ALL COMPUTER ROOM OUTLETS MUST BE DEDICATED & HAVE AN ISOLATED GROUND FOR EACH CIRCUIT. PROVIDE A DEDICATED UTILITY ANALOG PHONE LINE FROM THE TELEPHONE COMPANY IN THE COMPUTER ROOM FOR THE SECURITY ALARM SYSTEM.

ELECTRICAL NOTES:

1. EQUIPMENT LAYOUT, ELECTRICAL AND MECHANICAL DETAILS ARE BASED ON THE INFORMATION PROVIDED BY THE OWNER. CONTRACTOR TO COORDINATE ANY CORRESPONDING CHANGES TO EQUIPMENT SELECTION, LAYOUT, MECHANICAL, AND ELECTRICAL REQUIREMENTS WITH THE OWNER.
2. CONTRACTOR TO COORDINATE EQUIPMENT REQUIREMENTS WITH ARCHITECTURAL, MECHANICAL, AND PLUMBING DISCIPLINES.
3. SEE ARCHITECTURAL SHEETS FOR ADDITIONAL INFORMATION AND DETAILS ON EQUIPMENT INSTALLATION.
4. ALL WORK SHALL CONFORM TO THE LATEST EDITION OF THE NATIONAL ELECTRICAL CODE, THE GOVERNING ELECTRICAL CODE AND ALL OTHER INSPECTION DEPARTMENTS HAVING JURISDICTION. OBTAIN CERTIFICATES OR APPROVAL WHERE REQUIRED.
5. ALL MATERIALS FURNISHED SHALL BE NEW AND SHALL BE U.L. LISTED.
6. THE DRAWINGS INDICATE SIZE AND GENERAL LOCATION OF WORK. SCALE DIMENSIONS SHALL NOT BE USED. THE EXACT LOCATION AND LOCATION OF ALL LIGHTING FIXTURES, RECEPTACLES AND TELEPHONE OUTLETS, ETC. SHALL BE DETERMINED BY ACTUAL CONDITIONS IN THE FIELD.
7. PRIOR TO BIDDING, CONTRACTOR SHALL VISIT THE JOB SITE AND FAMILIARIZE THEMSELVES WITH THE EXISTING CONDITIONS.
8. ELECTRICAL CONTRACTOR SHALL COORDINATE HIS WORK WITH OTHER TRADES AND WITH OTHER CONTRACTORS WHOSE WORK MAY AFFECT THIS INSTALLATION.
9. ELECTRICAL CONTRACTOR SHALL COORDINATE INCOMING ELECTRICAL SERVICE WITH UTILITY COMPANY AND INCLUDE IN HIS BID ALL CHARGES AND FEES INCURRED IN MODIFICATIONS.
10. WHERE MORE THAN ONE SWITCH OCCURS IN THE SAME LOCATION, THEY SHALL BE INSTALLED IN A GANG TYPE BOX UNDER ONE COVER PLATE.
11. ELECTRICAL CONTRACTOR SHALL COORDINATE THE TELEPHONE INSTALLATION WITH THE TELEPHONE COMPANY AND THE GENERAL CONTRACTOR.
12. ELECTRICAL CONTRACTOR, BEFORE INSTALLING ANY OF THE WORK, SHALL SEE THAT IT DOES NOT INTERFERE WITH CLEARANCES REQUIRED FOR FINISHED COLUMNS, HUNG CEILINGS, PLASTER, PARTITIONS, WALLS, ETC. AS SHOWN IN THE ARCHITECTURAL DRAWINGS AND DETAILS. IF ANY WORK IS INSTALLED AND IT LATER DEVELOPS THAT SUCH DETAILS OR DESIGN CANNOT BE FOLLOWED, THE CONTRACTOR, AT HIS OWN EXPENSE, SHALL MAKE SUCH CHANGES IN THE WORK AS DIRECTED BY THE ARCHITECT. AS WELL AS TO PERMIT THE INSTALLATION OF THE ARCHITECTURAL WORK AS SHOWN ON THE PLANS AND DETAILS. WC MAY BE USED FOR LIGHTING WHIPS.
13. PERFORM TEST REQUIRED BY THE OWNER OR THE ENGINEER IN CONNECTION WITH THE OPERATION OF THE ELECTRICAL SYSTEM IN THE BUILDING.
14. ALL TESTS SHALL BE MADE IN ACCORDANCE WITH THE LATEST STANDARD OF THE IEEE AND THE NATIONAL ELECTRICAL CODE.
15. MINIMUM CONDUCTOR SIZE SHALL BE #12. GOOV INSULATION. MINIMUM SIZE CONDUIT SHALL BE 3/4" EMT FOR INTERIOR USE AND 3/4" RIGID ALUMINUM FOR EXTERIOR USE. USE TYPE MC CABLE COPPER. LIGHTS AND RECEPTACLE CIRCUITS, EXTERIOR FITTINGS SHALL BE CAST BOXES AND COVERS. INTERIOR FITTINGS SHALL BE CAST WHERE EXPOSED ON WALLS.
16. CONTRACTOR SHALL INSTALL WIRING AND OTHER CIRCUIT COMPONENTS TO MATCH EQUIPMENT ACTUALLY INSTALLED.
17. INSTALL GROUND FAULT RECEPTACLES AT RECEPTACLE LOCATIONS WITHIN 5' OF SINKS OR LAVATORIES, AND AT EXTERIOR LOCATIONS. EXTERIOR RECEPTACLES SHALL ALSO BE WATERPROOF.
18. BONDING AND GROUNDING SHALL BE IN ACCORDANCE WITH NFPA 70:250-63; NFPA 250-23; 250-71 & 250-72.
19. GROUND NEUTRAL IN ACCORDANCE WITH NFPA 70:250-23b.
20. FUSES SHALL BE ITC CLASS K5, 250 VOLT.
21. PROVIDE 200,000 AMP INTERRUPTING CAP.
22. EXTENSION SERVICES OF A FIRE/SMOKE DETECTION, AND ALARM COMPANY TO DESIGN AND INSTALL ALARM SYSTEM TO MEET REQUIREMENTS OF THE STATE FIRE MARSHALL. IF REQUIRED.
23. EXTERIOR LIGHTING SHALL BE SHADDED OR INWARDLY DIRECTED IN SUCH A MANNER SO THAT NO DIRECT LIGHTING OR GLARE IS CAST BEYOND THE PROPERTY LINE. THE INTENSITY OF SUCH LIGHTING SHALL NOT EXCEED ONE FOOT CANDLE AS MEASURED AT THE ABUTTING PROPERTY LINE.
24. ALL ELECTRICAL, MECHANICAL AND PLUMBING GENERATING THE PARTITIONS SHALL BE FIRE CAULKED. (PENETRATIONS THROUGH RATED CONSTRUCTION SHALL BE SEALED WITH A MATERIAL CAPABLE OF PREVENTING THE PASSAGE OF FLAMES AND HOT GASES WHEN TESTED IN ACCORDANCE WITH ASTM-E81.4.) SEE ARCHITECTURAL DRAWINGS FOR RATED CONSTRUCTION.



DAMMON
ENGINEERING, INC.
CHIEF ENGINEER
EMMETT
DAMMON, P.E.
ROBERT
WILTSE
CHIEF ARCHITECT
554 OLD SPANISH TRAIL
SUITE 1A, 70456
OFFICE: 985-649-5632
FAX: 985-641-1950

WWW.DAMMONENGINEERING.COM
EMAIL:
DAMMONEN@BELL.SOUTH.NET

ARCHITECTURE
ENGINEERING
STUDIES
PLANNING
INVESTIGATION
EXPERT WITNESS

US
DEPARTMENT
OF
AGRICULTURE

APHIS FACILITY
924 KENNER AVE.
KENNER
LOUISIANA
70062

ELECTRICAL
PLAN

SCALE: AS NOTED

REV: #1-2/24/2012

JOB#:

DATE: 1/15/2012

SHEET

MARK	DESCRIPTION	LAMP	MODEL NO.	MANUF.
A	2X2 PARABOLIC LANTERN FLUORESCENT	(2) EUT-16	WR269156QU12050	LIGHTOLIER
B	2X2 PARABOLIC RECESSED FLUORESCENT	(2) EUT-16	WR269156QU12050	LIGHTOLIER
C	2X4 PARABOLIC RECESSED FLUORESCENT	(2) EUT-16	WR269156QU12050	LIGHTOLIER
D	2X4 PARABOLIC RECESSED FLUORESCENT	(2) EUT-16	WR269156QU12050	LIGHTOLIER
E	2X4 PARABOLIC RECESSED FLUORESCENT	(2) EUT-16	WR269156QU12050	LIGHTOLIER
F	2X4 PARABOLIC RECESSED FLUORESCENT	(2) EUT-16	WR269156QU12050	LIGHTOLIER
G	2X4 PARABOLIC RECESSED FLUORESCENT	(2) EUT-16	WR269156QU12050	LIGHTOLIER
H	2X4 PARABOLIC RECESSED FLUORESCENT	(2) EUT-16	WR269156QU12050	LIGHTOLIER
I	2X4 PARABOLIC RECESSED FLUORESCENT	(2) EUT-16	WR269156QU12050	LIGHTOLIER
J	2X4 PARABOLIC RECESSED FLUORESCENT	(2) EUT-16	WR269156QU12050	LIGHTOLIER
K	2X4 PARABOLIC RECESSED FLUORESCENT	(2) EUT-16	WR269156QU12050	LIGHTOLIER
L	2X4 PARABOLIC RECESSED FLUORESCENT	(2) EUT-16	WR269156QU12050	LIGHTOLIER
M	2X4 PARABOLIC RECESSED FLUORESCENT	(2) EUT-16	WR269156QU12050	LIGHTOLIER
N	2X4 PARABOLIC RECESSED FLUORESCENT	(2) EUT-16	WR269156QU12050	LIGHTOLIER
O	2X4 PARABOLIC RECESSED FLUORESCENT	(2) EUT-16	WR269156QU12050	LIGHTOLIER
P	2X4 PARABOLIC RECESSED FLUORESCENT	(2) EUT-16	WR269156QU12050	LIGHTOLIER
Q	2X4 PARABOLIC RECESSED FLUORESCENT	(2) EUT-16	WR269156QU12050	LIGHTOLIER
R	2X4 PARABOLIC RECESSED FLUORESCENT	(2) EUT-16	WR269156QU12050	LIGHTOLIER
S	2X4 PARABOLIC RECESSED FLUORESCENT	(2) EUT-16	WR269156QU12050	LIGHTOLIER
T	2X4 PARABOLIC RECESSED FLUORESCENT	(2) EUT-16	WR269156QU12050	LIGHTOLIER
U	2X4 PARABOLIC RECESSED FLUORESCENT	(2) EUT-16	WR269156QU12050	LIGHTOLIER
V	2X4 PARABOLIC RECESSED FLUORESCENT	(2) EUT-16	WR269156QU12050	LIGHTOLIER
W	2X4 PARABOLIC RECESSED FLUORESCENT	(2) EUT-16	WR269156QU12050	LIGHTOLIER
X	2X4 PARABOLIC RECESSED FLUORESCENT	(2) EUT-16	WR269156QU12050	LIGHTOLIER
Y	2X4 PARABOLIC RECESSED FLUORESCENT	(2) EUT-16	WR269156QU12050	LIGHTOLIER
Z	2X4 PARABOLIC RECESSED FLUORESCENT	(2) EUT-16	WR269156QU12050	LIGHTOLIER