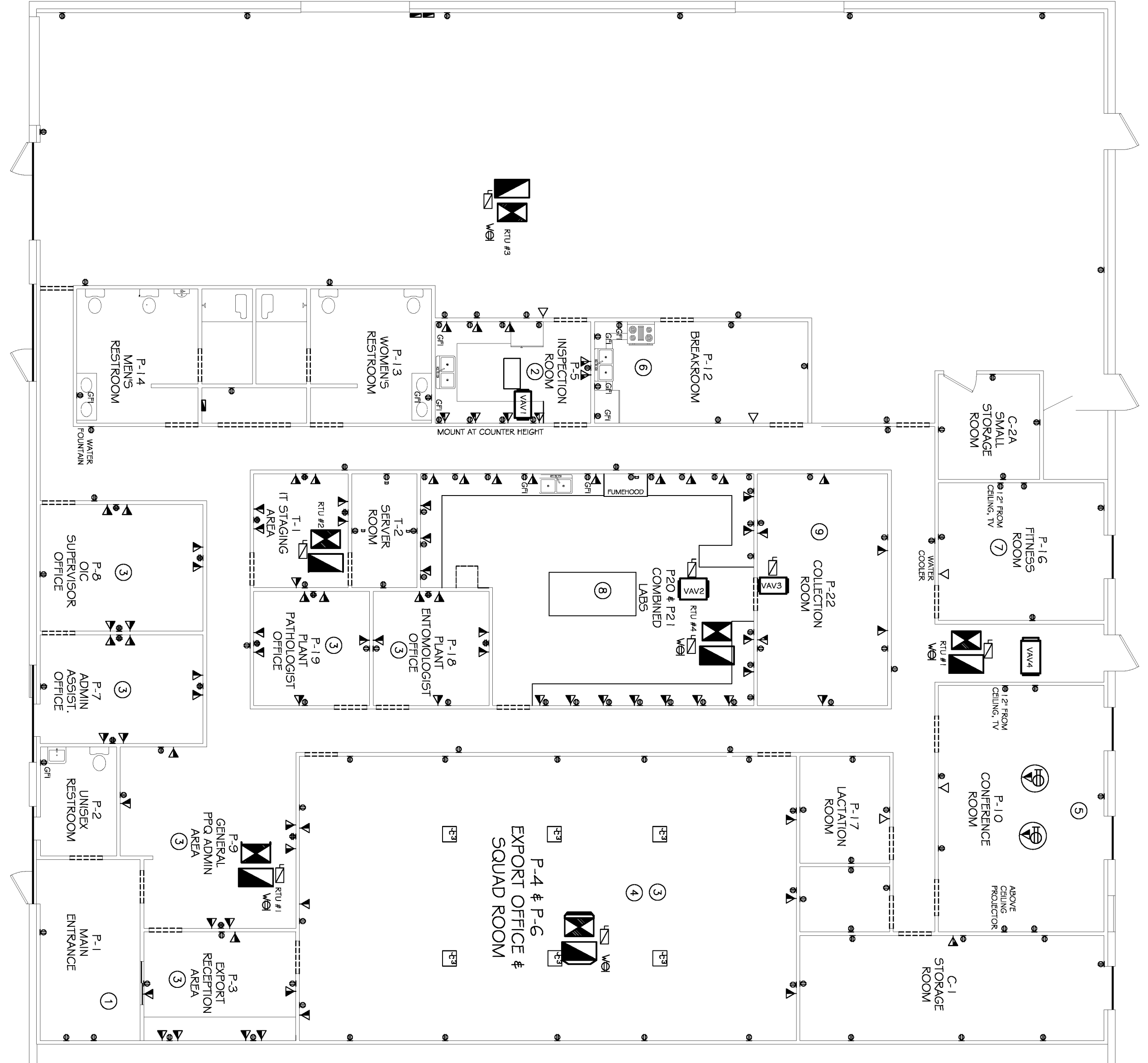


LIGHTING PLAN
SCALE: 1/8" = 1'-0"

MARK	DESCRIPTION	LAMP	MODEL NO.	MANUF.
A	2X2 PARABOLIC LAMP IN FLUORESCENT WITH ELECTRONIC BALLAST	(2) T5-T8 F932T8 3000K	VK2912626U1 20950	LIGHTOLIER
B	2X2 PARABOLIC RECESSED FLUORESCENT WITH ELECTRONIC BALLAST	(2) 6U-T8 F932T8 3000K	VK2912626U1 20950	LIGHTOLIER
C	2X4 PARABOLIC LAMP IN FLUORESCENT WITH ELECTRONIC BALLAST	F932T8 3000K	-WORK WALL KIT	LIGHTOLIER
D	2X4 PARABOLIC LAMP IN FLUORESCENT WITH ELECTRONIC BALLAST	F932T8 3000K	VK221 0153321 2003	LIGHTOLIER
E	2X4 PARABOLIC RECESSED FLUORESCENT WITH ELECTRONIC BALLAST	(4) F932T8 F932T8 3000K	VK271 0153321 2003	LIGHTOLIER
F	2X4 LINEAR FLUORESCENT TIGHT BAY SPECULAR REFLECTOR W/ MOTION SENSOR	(6) F932T8 3500K	E-LM178DNO	E-COINOUGH
G	2X4 LINEAR FLUORESCENT TIGHT BAY SPECULAR REFLECTOR W/ MOTION SENSOR	(6) F932T8 3500K	E-LM178DNO	E-COINOUGH
H	2X4 LINEAR FLUORESCENT TIGHT BAY SPECULAR REFLECTOR W/ MOTION SENSOR	(6) F932T8 3500K	E-LM178DNO	E-COINOUGH
I	2X4 LINEAR FLUORESCENT TIGHT BAY SPECULAR REFLECTOR W/ MOTION SENSOR	(6) F932T8 3500K	E-LM178DNO	E-COINOUGH
J	2X4 LINEAR FLUORESCENT TIGHT BAY SPECULAR REFLECTOR W/ MOTION SENSOR	(6) F932T8 3500K	E-LM178DNO	E-COINOUGH
K	2X4 LINEAR FLUORESCENT TIGHT BAY SPECULAR REFLECTOR W/ MOTION SENSOR	(6) F932T8 3500K	E-LM178DNO	E-COINOUGH
L	2X4 LINEAR FLUORESCENT TIGHT BAY SPECULAR REFLECTOR W/ MOTION SENSOR	(6) F932T8 3500K	E-LM178DNO	E-COINOUGH
M	2X4 LINEAR FLUORESCENT TIGHT BAY SPECULAR REFLECTOR W/ MOTION SENSOR	(6) F932T8 3500K	E-LM178DNO	E-COINOUGH
N	2X4 LINEAR FLUORESCENT TIGHT BAY SPECULAR REFLECTOR W/ MOTION SENSOR	(6) F932T8 3500K	E-LM178DNO	E-COINOUGH
O	2X4 LINEAR FLUORESCENT TIGHT BAY SPECULAR REFLECTOR W/ MOTION SENSOR	(6) F932T8 3500K	E-LM178DNO	E-COINOUGH
P	2X4 LINEAR FLUORESCENT TIGHT BAY SPECULAR REFLECTOR W/ MOTION SENSOR	(6) F932T8 3500K	E-LM178DNO	E-COINOUGH
R	2X4 LINEAR FLUORESCENT TIGHT BAY SPECULAR REFLECTOR W/ MOTION SENSOR	(6) F932T8 3500K	E-LM178DNO	E-COINOUGH
S	2X4 LINEAR FLUORESCENT TIGHT BAY SPECULAR REFLECTOR W/ MOTION SENSOR	(6) F932T8 3500K	E-LM178DNO	E-COINOUGH

LEGEND

- ☛ - POWER PANEL
- ☛ - SWITCH
- ☛ - 3-WAY SWITCH
- ☛ - SWITCH WITH DIMMER
- Ⓜ - MOTION SENSOR W/ADJUSTABLE DELAY
- Ⓛ - DOUBLE DUPLEX OUTLET.
- Ⓛ - DEDICATED DUPLEX OUTLET.
- Ⓛ - WEATHERPROOF OUTLET AT RIUS.
- Ⓛ - DISCONNECT SWITCH.
- Ⓛ - LIGHT FIXTURE WILL HAVE ONE LAMP HARDWIRED TO OPERATE 2477: FIXTURE WILL REQUIRE A SEPARATE BALLAST.
- Ⓛ - CUBICLE JUNCTION BOX IN CEILING FOR POWER AND NETWORK. PROVIDE (2) DATA CONNECTIONS, (2) 120 VAC OUTLETS. FOR EACH WORKSTATION LOCATION.
- Ⓛ - VOICE ONLY. INSTALL 1/2" CONDUIT FROM JACK TO ABOVE CEILING.
- Ⓛ - VOICE / DATA. INSTALL 1/2" CONDUIT FROM JACK TO ABOVE CEILING.
- Ⓛ - IN-FLOOR POWER AND DATA MONUMENT.



POWER PLAN
SCALE: 1/8" = 1'-0"

ELECTRICAL SHEET NOTES:

1. LOBBY SHALL HAVE 24 HR LIGHTING.
2. LIGHTING AND DIMMABLE FAN SHALL OPERATE ON A OCCUPANCY SENSOR.
3. TASK LIGHTING SHALL BE ON GENERATOR POWER.
4. SOME LIGHTING SHALL BE ON GENERATOR POWER.

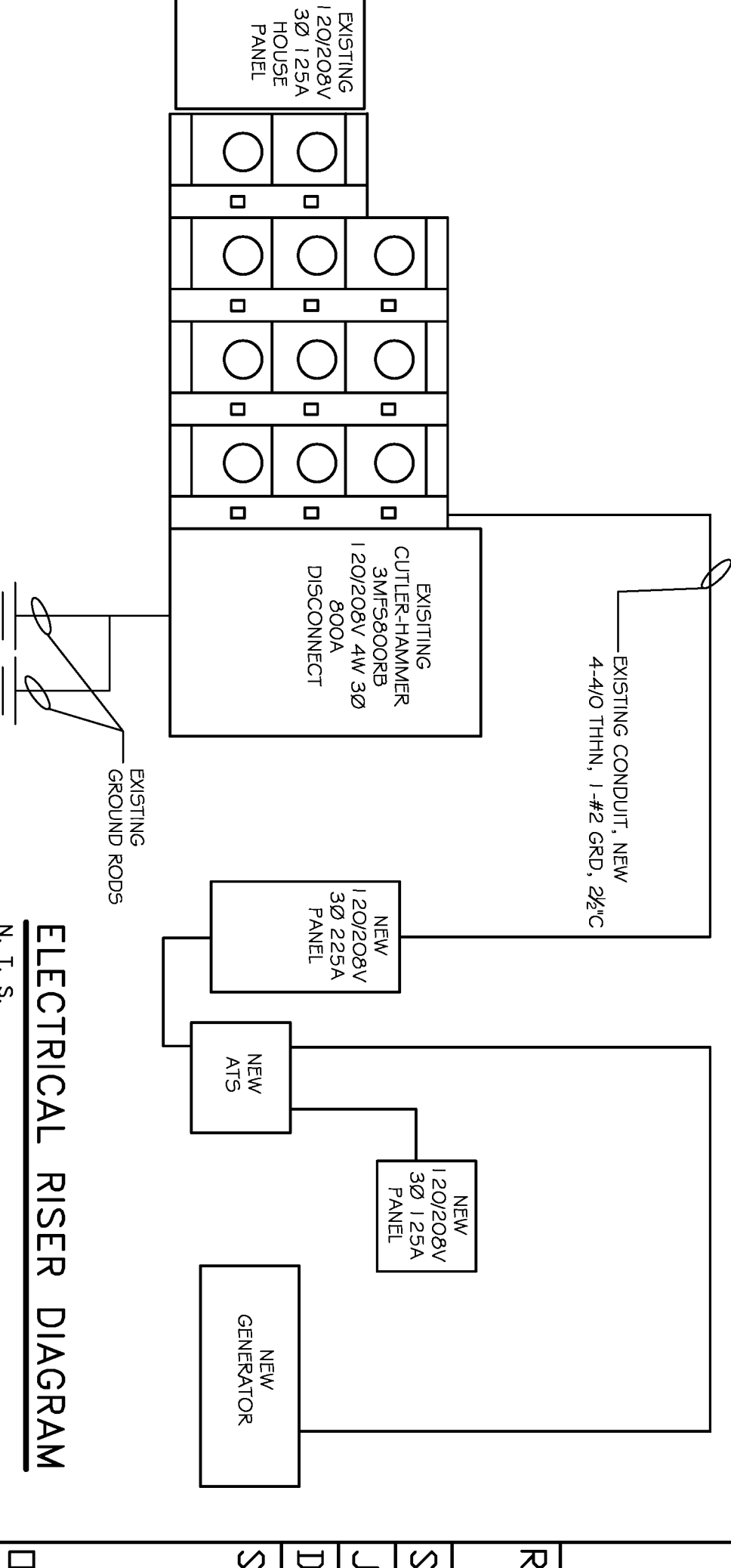
ELECTRICAL SHEET NOTES:

1. INSTALL A DOORBELL SYSTEM TO NOTIFY PERSONNEL IN EXPORT OFFICE OF VISITORS/DELIVERY. PROVIDE DUPLEX OUTLETS ON DEDICATED CIRCUIT FOR VENDING MACHINES.
2. 2EA WALL OUTLETS SHALL BE CONNECTED TO GENERATOR POWER. MOUNT DATA AND OUTLETS AT COUNTER HEIGHT.
3. PROVIDE (2) DATA CONNECTIONS, (2) 120 VAC OUTLETS, FOR EACH WORKSTATION LOCATION. PROVIDE (4) DATA CONNECTIONS AND (4) 120 VAC OUTLETS FOR TWO PRINTERS AND ONE FAX MACHINE AT THE CUSTOMERS OPTION.
4. SOME LIGHTING AND WORKSTATION(S) SHALL BE CONNECTED TO GENERATOR POWER.
5. PROVIDE TWO FLUSH MOUNTED (4) OUTLET UNITS WITH COVERS WITH (5) DATA POTS PER UNIT. PROVIDE CONNECTIVITY FROM ONE UNIT TO CEILING MOUNTED PROJECTIONS. VERIFY LOCATIONS WITH OWNER. PROVIDE POWER CONNECTIONS FOR TV AND PROJECTOR SCREEN.
6. PROVIDE DIMMABLE AND GARBAGE DISPOSAL POWER CONNECTIONS.
7. PROVIDE ELECTRICAL CONNECTIONS FOR ELECTRICALLY POWERED EXERCISE UNITS. PROVIDE POWER FOR TV, CONTACT OWNER FOR LOCATION.
8. ONE DUPLEX 20AMP RECEPTACLE EVERY 3 FT. AT COUNTER HEIGHT WITH NO MORE THAN 4 DUPLEX RECEPTACLES PER INDIVIDUAL 20AMP CIRCUIT. (6) DATA POTS AT WORKSTATIONS. FUME HOOD REMOTE. INSTALL POWER FOR USA PROVIDED EQUIPMENT. PROVIDE GARBAGE DISPOSAL AND POWER CONNECTION. SOME OUTLETS, EQUIPMENT AND LIGHTS TO BE ON GENERATOR POWER.
9. SOME OUTLETS, EQUIPMENT AND LIGHTS TO BE ON GENERATOR POWER.

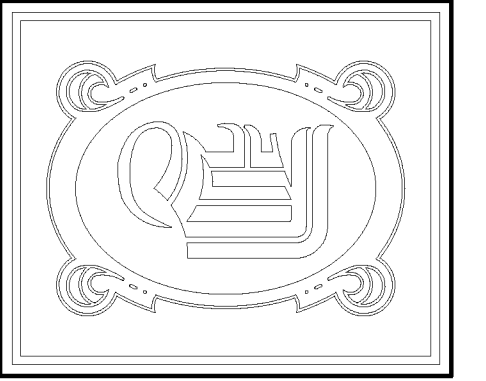
EQUIPMENT NOTES:

1. EQUIPMENT LAYOUT, ELECTRICAL AND MECHANICAL DETAILS ARE BASED ON THE INFORMATION PROVIDED BY THE OWNER. CONTRACTOR TO COORDINATE ANY CORRESPONDING CHANGES TO EQUIPMENT SELECTION, LAYOUT, MECHANICAL, AND ELECTRICAL REQUIREMENTS WITH THE OWNER.
2. CONTRACTOR TO COORDINATE EQUIPMENT REQUIREMENTS WITH ARCHITECTURAL, MECHANICAL, AND PLUMBING DISCIPLINES.
3. SEE ARCHITECTURAL SHEETS FOR ADDITIONAL INFORMATION AND DETAILS ON EQUIPMENT INSTALLATION.
4. ALL WORK SHALL CONFORM TO THE LATEST EDITION OF THE NATIONAL ELECTRICAL CODE, THE GOVERNING ELECTRICAL CODE AND ALL OTHER INSPECTION DEPARTMENTS HAVING JURISDICTION. OBTAIN CERTIFICATES OR APPROVAL WHERE REQUIRED.
5. ALL MATERIALS FINISHED SHALL BE NEW AND SHALL BE U.L. LISTED.
6. THE DRAWINGS INDICATE SIZE AND GENERAL LOCATION OF WORK. SCALE DIMENSIONS SHALL NOT BE USED. THE EXACT LOCATION AND LOCATION OF ALL LIGHTING FIXTURES, RECEPTACLES AND TELEPHONE OUTLETS, ETC. SHALL BE DETERMINED BY ACTUAL CONDITIONS IN THE FIELD.
7. PRIOR TO BIDDING, CONTRACTOR SHALL VISIT THE JOB SITE AND FAMILIARIZE THEMSELVES WITH THE EXISTING CONDITIONS.
8. ELECTRICAL CONTRACTOR SHALL COORDINATE HIS WORK WITH OTHER TRADES AND WITH OTHER CONTRACTORS WHOSE WORK MAY AFFECT THIS INSTALLATION.
9. ELECTRICAL CONTRACTOR SHALL COORDINATE INCOMING ELECTRICAL SERVICE WITH UTILITY COMPANY AND INCLUDE IN HIS BID ALL CHARGES AND FEES INCURRED IN MODIFICATIONS.
10. WHERE MORE THAN ONE SWITCH OCCURS IN THE SAME LOCATION, THEY SHALL BE INSTALLED IN A GANG TYPE BOX UNDER ONE COVER PLATE.
11. ELECTRICAL CONTRACTOR SHALL COORDINATE THE TELEPHONE INSTALLATION WITH THE TELEPHONE COMPANY AND THE GENERAL CONTRACTOR.
12. ELECTRICAL CONTRACTOR, BEFORE INSTALLING ANY OF THE WORK, SHALL SEE THAT IT DOES NOT INTERFERE WITH CLEARANCES REQUIRED FOR FINISHED COLUMNS, HUNG CEILINGS, PLASTER, PARTITIONS, WALLS, ETC. AS SHOWN IN THE ARCHITECTURAL DRAWINGS AND DETAILS. IF ANY WORK IS INSTALLED AND IT LATER DEVELOPS THAT SUCH DETAILS OR DESIGN CANNOT BE CHANGED, THE CONTRACTOR AT HIS OWN EXPENSE, SHALL MAKE SUCH CHANGES IN THE WORK AS DIRECTED BY THE ARCHITECT. AS WELL AS TO PERMIT THE INSTALLATION OF THE ARCHITECTURAL WORK AS SHOWN ON THE PLANS AND DETAILS. M-2 MC MAY BE USED FOR LIGHTING WHIPS.
13. PERFORM TEST REQUIRED BY THE OWNER OR THE ENGINEER IN CONNECTION WITH THE OPERATION OF THE ELECTRICAL SYSTEM IN THE BUILDING.
14. ALL TESTS SHALL BE MADE IN ACCORDANCE WITH THE LATEST STANDARD OF THE IEEE AND THE NATIONAL ELECTRICAL CODE.
15. MINIMUM CONDUCTOR SIZE SHALL BE #12, 600V INSULATION. MINIMUM SIZE CONDUIT SHALL BE 3/4" EMT FOR INTERIOR USE, AND 3/4" RIGID ALUMINUM FOR EXTERIOR USE. USE TYPE MC CABLE COPPER, FOR LIGHTS AND RECEPTACLE CIRCUITS. EXTERIOR FITTINGS SHALL BE CAST BOXES AND COVERS. INTERIOR FITTINGS SHALL BE CAST WHERE EXPOSED ON WALLS. STAMPED BOXES MAY BE USED ABOVE CEILINGS IN AIR CONDITIONED SPACES.
16. CONTRACTOR SHALL INSTALL WIRING AND OTHER CIRCUIT COMPONENTS TO MATCH EQUIPMENT ACTUALLY INSTALLED.
17. INSTALL GROUND FAULT RECEPTACLES AT RECEPTACLE LOCATIONS WITHIN 5' OF SINKS OR LAVATORIES, AND AT EXTERIOR LOCATIONS. EXTERIOR RECEPTACLES SHALL ALSO BE IN ACCORDANCE WITH NFPA 70:230-63. NFPA 250-23, 250-71 & 250-72.
18. BONDING AND GROUNDING SHALL BE IN ACCORDANCE WITH NFPA 70:230-63. NFPA 250-23, 250-71 & 250-72.
19. GROUND NEUTRAL IN ACCORDANCE WITH NFPA 70:250-23P.
20. FUSES SHALL BE ITC CLASS K5, 250 VOLT, 200,000 AMP INTERRUPTING CAP.
21. PROVIDE SERVICES OF A FIREWORK DETECTION AND ALARM COMPANY TO DESIGN AND INSTALL ALARM SYSTEM TO MEET REQUIREMENTS OF THE STATE FIRE MARSHALL, IF REQUIRED.
22. EXTERIOR LIGHTING SHALL BE SHADDED OR INWARDY DIRECTED IN SUCH A MANNER SO THAT NO DIRECT LIGHTING OR GLARE IS CAST BEYOND THE PROPERTY LINE. THE INTENSITY OF SUCH LIGHTING SHALL NOT EXCEED ONE FOOT CANDLE AS MEASURED AT THE ABUTTING PROPERTY LINE.
23. ALL ELECTRICAL, MECHANICAL AND PLUMBING PENETRATING FIRE PARTITIONS SHALL BE FIRE CALLED. (PENETRATIONS THROUGH RATED CONSTRUCTION SHALL BE SEALED WITH A MATERIAL CAPABLE OF PREVENTING THE PASSAGE OF FLAMES AND HOT GASES WHEN TESTED IN ACCORDANCE WITH ASTM-E814.)

NOTE: ELECTRICAL SERVICE AND SPECIAL FEATURES AS SHOWN ON THESE DRAWINGS ARE BASED ON THE INFORMATION PROVIDED BY THE OWNER. CONTRACTOR TO COORDINATE ANY CORRESPONDING CHANGES TO EQUIPMENT SELECTION, LAYOUT, MECHANICAL, AND ELECTRICAL REQUIREMENTS WITH THE OWNER.



ELECTRICAL RISER DIAGRAM
N, T, S



DAMMON ENGINEERING, INC.
CHIEF ENGINEER
ENANNETT
DAMMON, P. E.
CHIEF ARCHITECT
ROBERT
WILLIAMS

554 OLD SPANISH TRAIL
SLIDELL, LA, 70458
OFFICE: 985-649-5632
FAX: 985-641-5950

WEBSITE:
WWW.DAMMONENGINEERING.COM
EMAIL:
DAMMONENG@BELLSouth.NET

ARCHITECTURE
ENGINEERING
STUDIES
PLANNING
INVESTIGATION
EXPERT WITNESS

US
DEPARTMENT
OF
AGRICULTURE

APHIS FACILITY
924 KENNER AVE.
KENNER
LOUISIANA
70458

ELECTRICAL PLAN

SCALE: AS NOTED
JOB#: _____
DATE: 1/6/2012
SHEET _____
DF