

PANEL: SUITE 14
 LOCATION: WAREHOUSE
 MAIN PANEL

VOLTAGE: 120V/208V, 225A 3Ø, 4W
 ENCLOSURE: SURFACE MOUNTED

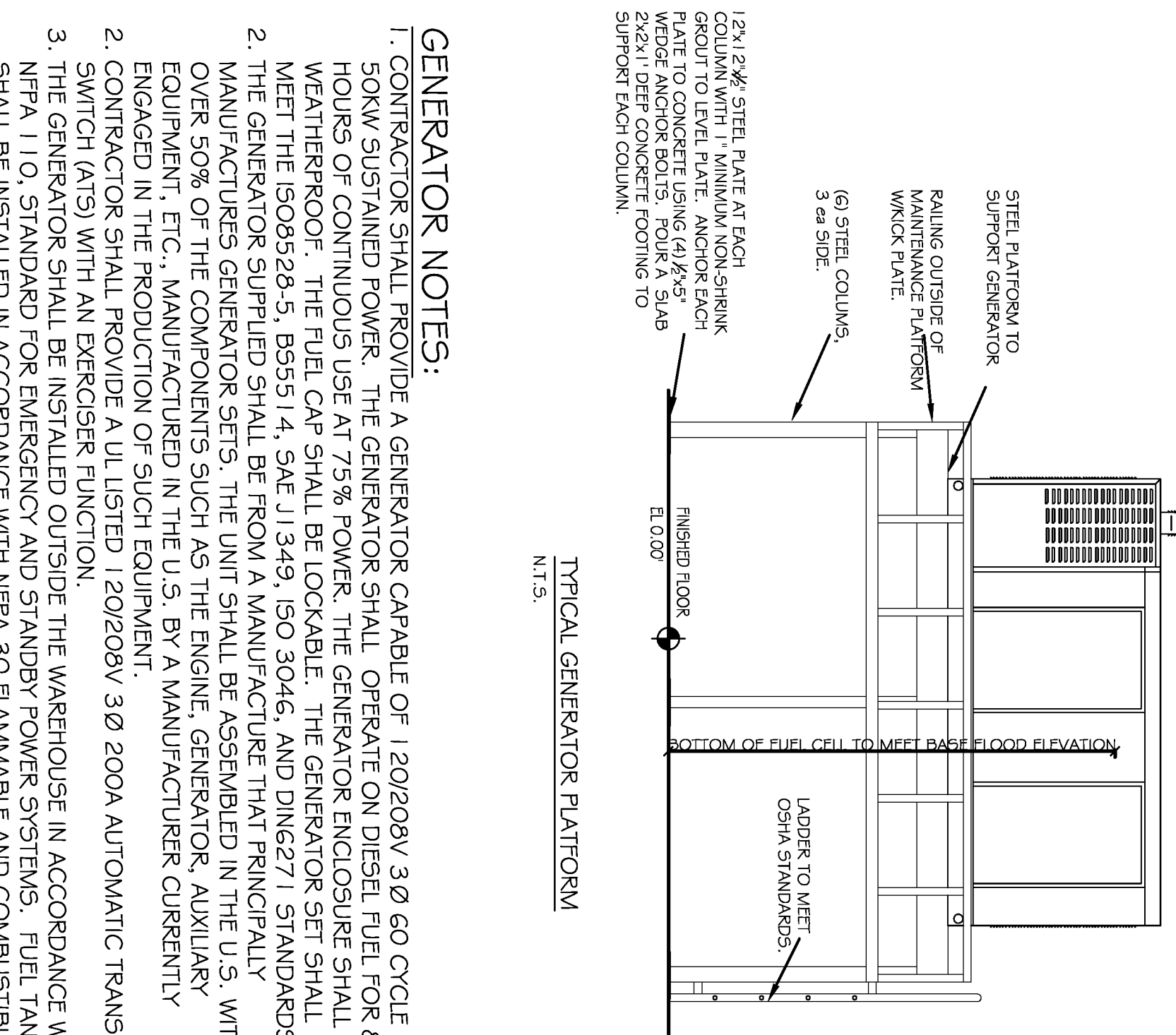
CKT. NO.	THHN WIRE SIZE	LOAD DESCRIPTION	LOCATION	BREAKER AMP	POLE	LOAD (KVA)	A B C Ø	LOAD (KVA)	BREAKER POLE AMP	LOAD DESCRIPTION	LOCATION	THHN WIRE SIZE	CKT. NO.		
1	12	WAREHOUSE LIGHTS		20	1	1.7	○ ○ ○	1.7	1	WAREHOUSE OUTLETS		12	2		
3	12	WAREHOUSE LIGHTS		20	1	1.7	○ ○ ○	1.7	1	WAREHOUSE LIGHTS		12	4		
5	12	WAREHOUSE OUTLETS		20	1	1.5	○ ○ ○	2.5	2	V V T #2, 5 KW HEATER		10	6		
7	12	RM C2A OUTLETS		20	1	0.7	○ ○ ○	2.5	2	V V T #1, 3KW HEATER		12	8		
9	12	V V T #3, 2KW HEATER		20	1	1.0	○ ○ ○	1.5	2			12	10		
11						1.0	○ ○ ○	1.5				12	12		
13						2.0	○ ○ ○	2.0				14	14		
15	10	WAREHOUSE INFRARED HEATER		20	3	2.0	○ ○ ○	2.0	3	WAREHOUSE INFRARED HEATER		10	16		
17						2.0	○ ○ ○	2.0				18	18		
19	10	WAREHOUSE INFRARED HEATER		20	3	2.0	○ ○ ○	2.0	3	WAREHOUSE INFRARED HEATER		10	22		
21						2.0	○ ○ ○	2.0				24	24		
23	10	WAREHOUSE INFRARED HEATER		20	3	2.0	○ ○ ○	2.0	3	WAREHOUSE INFRARED HEATER		10	26		
25	12	HW DUCT HEATER SERVER RM		20	1	.5	○ ○ ○	2.0	1	EF-6		12	28		
27	12	SPARE		20	1	---	○ ○ ○	---	1	EF-6		12	30		
29	12	SPARE		20	1	---	○ ○ ○	---	1	SPARE		12	32		
31	12	SPARE		20	1	---	○ ○ ○	---	1	SPARE		12	34		
33	12	SPARE		20	1	---	○ ○ ○	---	1	SPARE		12	36		
35	12	SPARE		20	1	---	○ ○ ○	---	1	SPARE		12	38		
37	12	SPARE		20	1	---	○ ○ ○	---	1	SPARE		12	40		
39	12	SPARE		20	1	---	○ ○ ○	---	1	SPARE		12	42		
41	12	SPARE		20	1	---	○ ○ ○	---	1	SPARE		12	44		
						TOTAL CONNECTED LOAD (KVA)									
						AØ 35.2KVA	BØ 34.2KVA	CØ 32.6KVA							
												GROUND BUS (G)		GROUND WIRE (G)	

PANEL: SUITE 13
 LOCATION: MAIN, CLOSET
 MAIN PANEL

SERVICE: 120/208V, 225A 3Ø, 4W
 ENCLOSURE: EXISTING, PANEL W/EQUIPMENT GRND BAR

CKT. NO.	THHN WIRE SIZE	LOAD DESCRIPTION	LOCATION	BREAKER AMP	POLE	LOAD (KVA)	A B C Ø	LOAD (KVA)	BREAKER POLE AMP	LOAD DESCRIPTION	LOCATION	THHN WIRE SIZE	CKT. NO.		
1	4	RTU #1		7.3	3	7.3	○ ○ ○	6.9	3	RTU #4		6	4		
3	12	WOMEN'S RESTROOM LIGHTS		20	1	1.6	○ ○ ○	6.9	1	HOT WATER HEATER		8	6		
5	12	WOMEN'S RESTROOM LIGHTS		20	1	1.6	○ ○ ○	6.9	1	HOT WATER HEATER		8	8		
7	12	WOMEN'S RESTROOM LIGHTS		20	1	1.6	○ ○ ○	6.9	1	HOT WATER HEATER		8	10		
9	12	WOMEN'S RESTROOM LIGHTS		20	1	1.6	○ ○ ○	6.9	1	HOT WATER HEATER		8	12		
11	12	WOMEN'S RESTROOM LIGHTS		20	1	1.6	○ ○ ○	6.9	1	HOT WATER HEATER		8	14		
13	12	WOMEN'S RESTROOM LIGHTS		20	1	1.6	○ ○ ○	6.9	1	HOT WATER HEATER		8	16		
15	12	WOMEN'S RESTROOM LIGHTS		20	1	1.6	○ ○ ○	6.9	1	HOT WATER HEATER		8	18		
17	12	WOMEN'S RESTROOM LIGHTS		20	1	1.6	○ ○ ○	6.9	1	HOT WATER HEATER		8	20		
19	12	WOMEN'S RESTROOM LIGHTS		20	1	1.6	○ ○ ○	6.9	1	HOT WATER HEATER		8	22		
21	12	WOMEN'S RESTROOM LIGHTS		20	1	1.6	○ ○ ○	6.9	1	HOT WATER HEATER		8	24		
23	12	WOMEN'S RESTROOM LIGHTS		20	1	1.6	○ ○ ○	6.9	1	HOT WATER HEATER		8	26		
25	12	WOMEN'S RESTROOM LIGHTS		20	1	1.6	○ ○ ○	6.9	1	HOT WATER HEATER		8	28		
27	12	WOMEN'S RESTROOM LIGHTS		20	1	1.6	○ ○ ○	6.9	1	HOT WATER HEATER		8	30		
29	12	WOMEN'S RESTROOM LIGHTS		20	1	1.6	○ ○ ○	6.9	1	HOT WATER HEATER		8	32		
31	12	WOMEN'S RESTROOM LIGHTS		20	1	1.6	○ ○ ○	6.9	1	HOT WATER HEATER		8	34		
33	12	WOMEN'S RESTROOM LIGHTS		20	1	1.6	○ ○ ○	6.9	1	HOT WATER HEATER		8	36		
35	12	WOMEN'S RESTROOM LIGHTS		20	1	1.6	○ ○ ○	6.9	1	HOT WATER HEATER		8	38		
37	12	WOMEN'S RESTROOM LIGHTS		20	1	1.6	○ ○ ○	6.9	1	HOT WATER HEATER		8	40		
39	12	WOMEN'S RESTROOM LIGHTS		20	1	1.6	○ ○ ○	6.9	1	HOT WATER HEATER		8	42		
41	12	WOMEN'S RESTROOM LIGHTS		20	1	1.6	○ ○ ○	6.9	1	HOT WATER HEATER		8	44		
						TOTAL CONNECTED LOAD (KVA)									
						AØ 33.5KVA	BØ 34.0KVA	CØ 34.1KVA							
												GROUND BUS (G)		GROUND WIRE (G)	

PANEL: SUITE 13
 LOCATION: MAIN, CLOSET
 MAIN PANEL



GENERATOR NOTES:

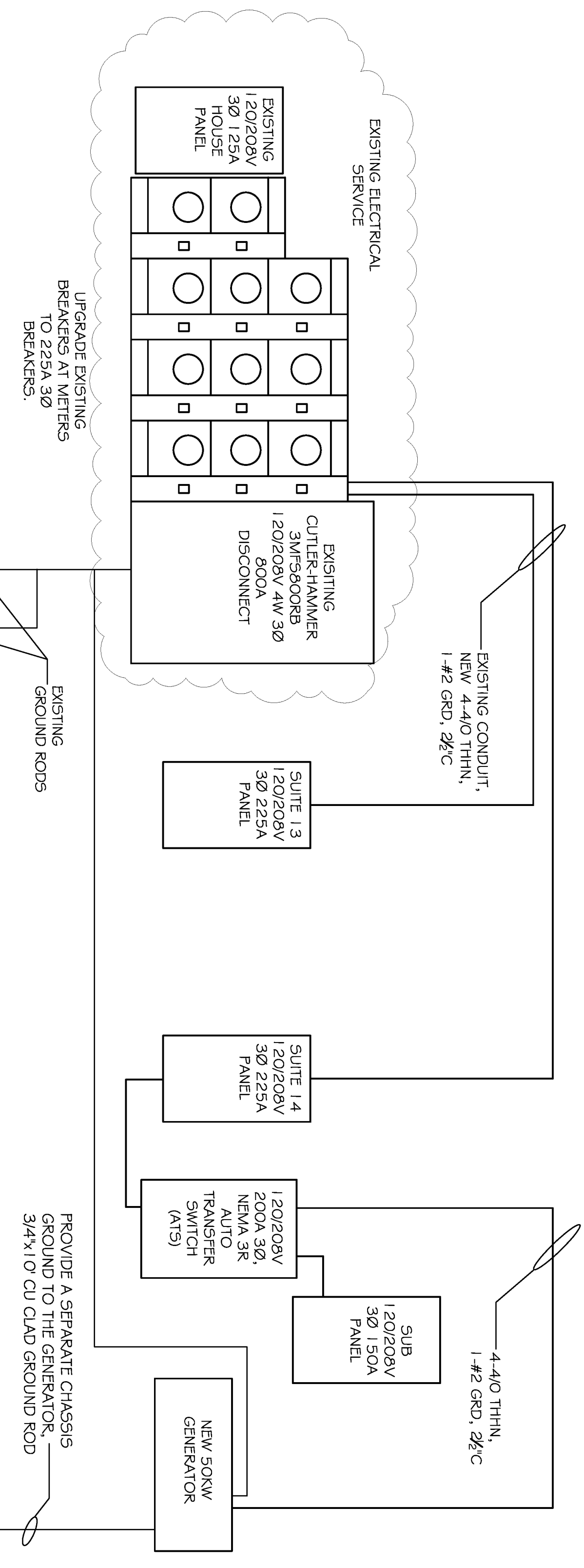
1. CONTRACTOR SHALL PROVIDE A GENERATOR CAPABLE OF 120/208V 3Ø 60 CYCLE 50KW SUSTAINED POWER. THE GENERATOR SHALL OPERATE ON DIESEL FUEL FOR 8 HOURS OF CONTINUOUS USE AT 75% POWER. THE GENERATOR ENCLOSURE SHALL BE WEATHERPROOF. THE FUEL CAP SHALL BE LOCKABLE. THE GENERATOR SET SHALL MEET THE ISO8528-5, B55114, SAE J1349, ISO 3046, AND DIN6271 STANDARDS.
2. THE GENERATOR SUPPLIED SHALL BE FROM A MANUFACTURE THAT PRINCIPALLY MANUFACTURES GENERATOR SETS. THE UNIT SHALL BE ASSEMBLED IN THE U.S. WITH OVER 50% OF THE COMPONENTS SUCH AS THE ENGINE, GENERATOR, AUXILIARY EQUIPMENT, ETC., MANUFACTURED IN THE U.S. BY A MANUFACTURER CURRENTLY ENGAGED IN THE PRODUCTION OF SUCH EQUIPMENT.
3. CONTRACTOR SHALL PROVIDE A UL LISTED 120/208V 3Ø 200A AUTOMATIC TRANSFER SWITCH (ATS) WITH AN EXERCISER FUNCTION.
4. THE GENERATOR SHALL BE INSTALLED OUTSIDE THE WAREHOUSE IN ACCORDANCE WITH NFPA 110. STANDARD FOR EMERGENCY AND STANDBY POWER SYSTEMS. FUEL TANKS SHALL BE INSTALLED IN ACCORDANCE WITH NFPA 30 FLAMMABLE AND COMBUSTIBLE LIQUIDS CODE AND NFPA 30A MOTOR FUEL DISPENSING FACILITIES AND REPAIR GARAGES. THE GENERATOR AND ANY FUEL STORAGE SHALL BE PLACED ON A PLATFORM ABOVE THE FLOOD PLAN ELEVATION FOR THE SITE.
5. PROVIDE A RECHARGING KIT WITH GENERATOR.

PANEL: ATS PANEL
 LOCATION: WAREHOUSE
 SUB PANEL

VOLTAGE: 120V/208V, 150A 3Ø, 4W
 ENCLOSURE: SURFACE MOUNTED

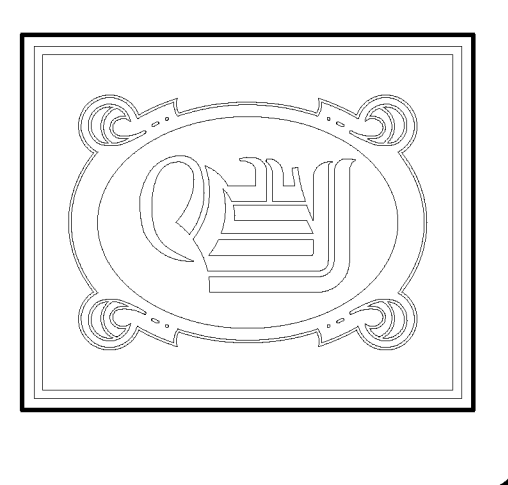
CKT. NO.	THHN WIRE SIZE	LOAD DESCRIPTION	LOCATION	BREAKER AMP	POLE	LOAD (KVA)	A B C Ø	LOAD (KVA)	BREAKER POLE AMP	LOAD DESCRIPTION	LOCATION	THHN WIRE SIZE	CKT. NO.		
1	12	RTU #2		2	2	1.5	○ ○ ○	3.4	40	RTU #3		8	2		
3	12	P-3 LIGHTS & EVERY 4TH CORRIDOR LIGHT		20	1	1.5	○ ○ ○	3.4	1	P-20 TASK LIGHTS		12	4		
5	12	P-5 DROP LIGHTING & OUTLETS ON CORRIDOR WALL		20	1	1.5	○ ○ ○	3.4	1	P-20 TASK LIGHTS		12	6		
7	12	P-7 FUME HOOD		20	1	1.5	○ ○ ○	0.8	1	P-20 COUNTER OUTLETS		12	8		
9	12	DEDICATED OUTLET		20	1	1.5	○ ○ ○	1.5	1	P-20 COUNTER OUTLETS		12	10		
11	12	P-20 COUNTER OUTLETS		20	1	1.5	○ ○ ○	1.5	1	P-22 OUTLETS		12	12		
13	12	P-20 COUNTER OUTLETS		20	1	1.5	○ ○ ○	1.5	1	P-22 OUTLETS		12	14		
15	12	P-20 LIGHTS		20	1	1.3	○ ○ ○	1.4	1	P-22 LIGHTS		12	16		
17	12	P-22 EXHAUST FAN		20	1	1.6	○ ○ ○	1.3	1	P-20 LIGHTS		12	18		
19	10	T-2, APC 2KVA UPS		30	1	2.5	○ ○ ○	1.6	1	P-4 & P-6 CUBICLES		12	20		
21						2.5	○ ○ ○	1.8	1	P-4 & P-6 CUBICLES		12	22		
23	12	T-1 & T-2 LIGHTS		20	1	1.1	○ ○ ○	1.4	1	P-4 & P-6 CUBICLES		12	24		
25	12	P-3 OUTLETS & CENTER LAMPS IN LOBBY		20	1	1.7	○ ○ ○	1.4	1	P-4 & P-6 CUBICLES		12	26		
27	12	P-20 COUNTER OUTLETS		20	1	1.3	○ ○ ○	1.1	1	P-4 & P-6 LIGHTS		12	28		
29	12	P-20 COUNTER OUTLETS		20	1	1.3	○ ○ ○	1.5	1	P-4 & P-6 LIGHTS		12	30		
31	12	SPARE		20	1	---	○ ○ ○	---	1	SPARE		12	32		
33	12	SPARE		20	1	---	○ ○ ○	---	1	SPARE		12	34		
35	12	SPARE		20	1	---	○ ○ ○	---	1	SPARE		12	36		
37	12	SPARE		20	1	---	○ ○ ○	---	1	SPARE		12	38		
39	12	SPARE		20	1	---	○ ○ ○	---	1	SPARE		12	40		
41	12	SPARE		20	1	---	○ ○ ○	---	1	SPARE		12	42		
						TOTAL CONNECTED LOAD (KVA)									
						AØ 17.4KVA	BØ 17.1KVA	CØ 16.1KVA							
												GROUND BUS (G)		GROUND WIRE (G)	

NOTE: ELECTRICAL SERVICE AND SYSTEM DETAILED IS DESIGNED BASED ON 120 / 208 VOLT THREE PHASE SERVICE. MAKE NECESSARY MODIFICATIONS AS REQUIRED.



ELECTRICAL RISER DIAGRAM

N. T. S.



DAMMON ENGINEERING, INC.
 CHIEF ENGINEER
 EMMETT DAMMON, P.E.
 CHIEF ARCHITECT
 ROBERT WILTSE

554 OLD SPANISH TAIL
 SUITE 11, LA 70456
 OFFICE: 985-649-5632
 FAX: 985-641-5950

WWW.DAMMONENGINEERING.COM
 EMAIL: DAMMONENG@BELL.SOUTH.NET

ARCHITECTURE
 ENGINEERING
 STUDIES
 PLANNING
 INVESTIGATION
 EXPERT WITNESS

US DEPARTMENT OF AGRICULTURE

APHIS FACILITY
 924 KENNER AVE.
 KENNER LOUISIANA 70458

ELECTRICAL DETAILS

REV:	SCALE: AS NOTED
JOB#:	DATE: 1/15/2012
SHEET	