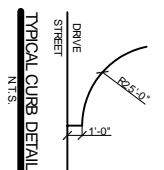
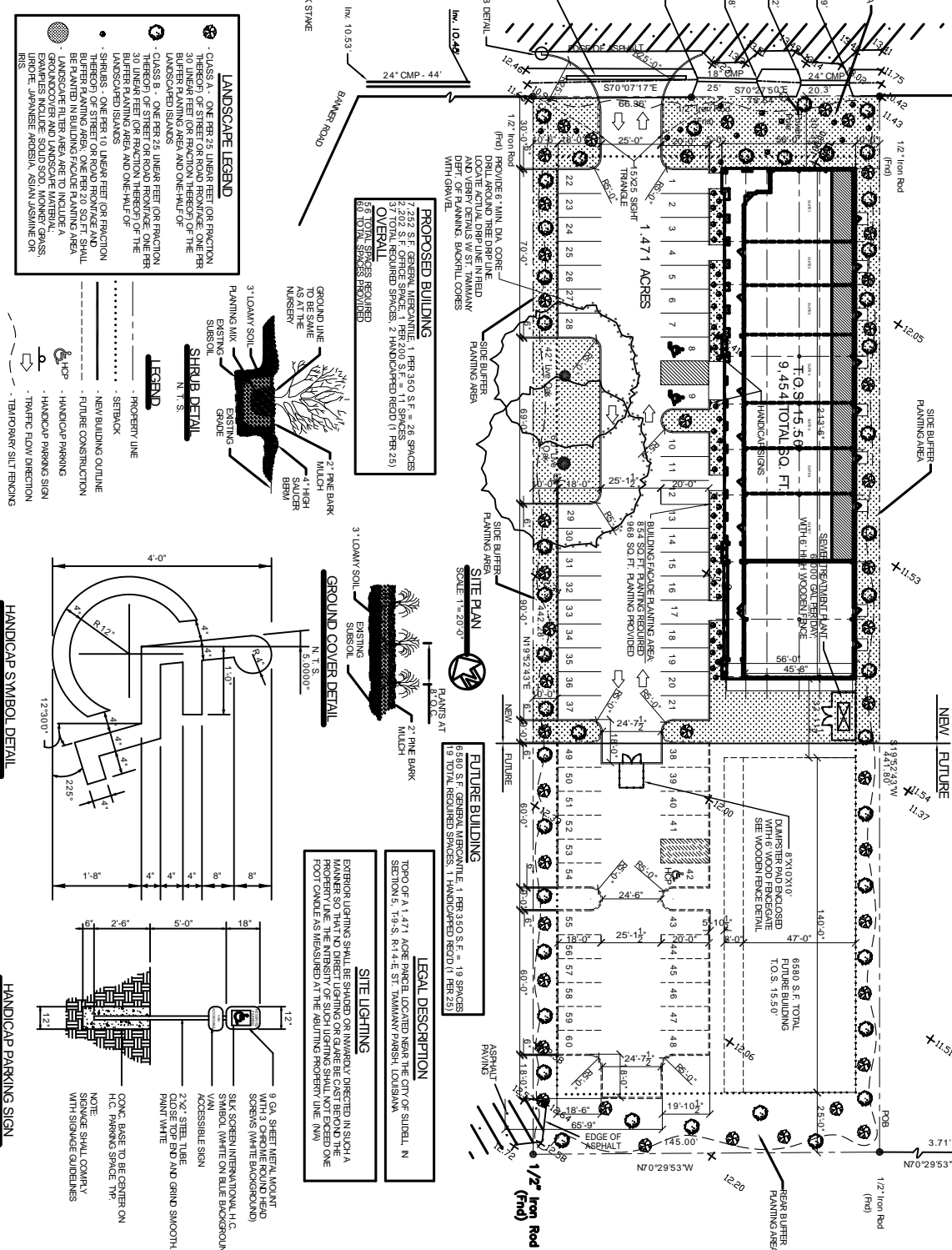


WOODEN FENCE MUST BE 6'-0" ADJUST HEIGHT OF FENCE AS NEEDED

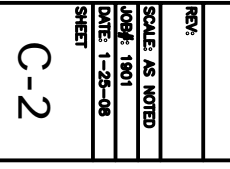
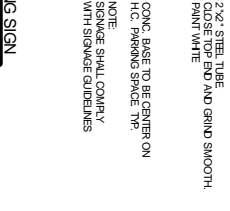
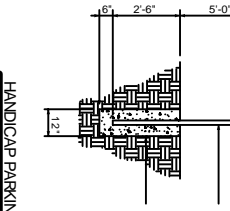
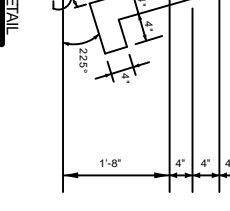
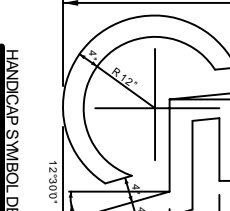


WESTMINSTER DRIVE SIDE

ZONING C-2



THIS POINT IS DESCRIBED AS BEING N83°4'W, 312.35', N 76°07'E, 76.96' FROM THE CORNER COMMON TO SECTIONS 4, 5, 8, 38 T-9-S, R-14-E (FOR B7 OTHERS AND NOT FIELD VERIFIED BY THIS FIRM.)



SCALE AS NOTED
 JOB# 1801
 DATE 1-29-08
 SHEET
 C-2

REV:

SITE PLAN

KEN STARLING
 HWY 190
 SLIDELL, LA

NEW OFFICE BUILDING

ARCHITECTURE
 ENGINEERING
 STUDIES
 PLANNING
 INVESTIGATION
 EXPERT WITNESS

1095 FLORIDA AVENUE
 SUITE 200
 SLIDELL, LA 70461
 WWW.DAMMONENGINEERING.COM
 PHONE: 504-885-3333
 FAX: 504-885-3334
 EMAIL: DAMMON@DAMMONENGINEERING.COM

