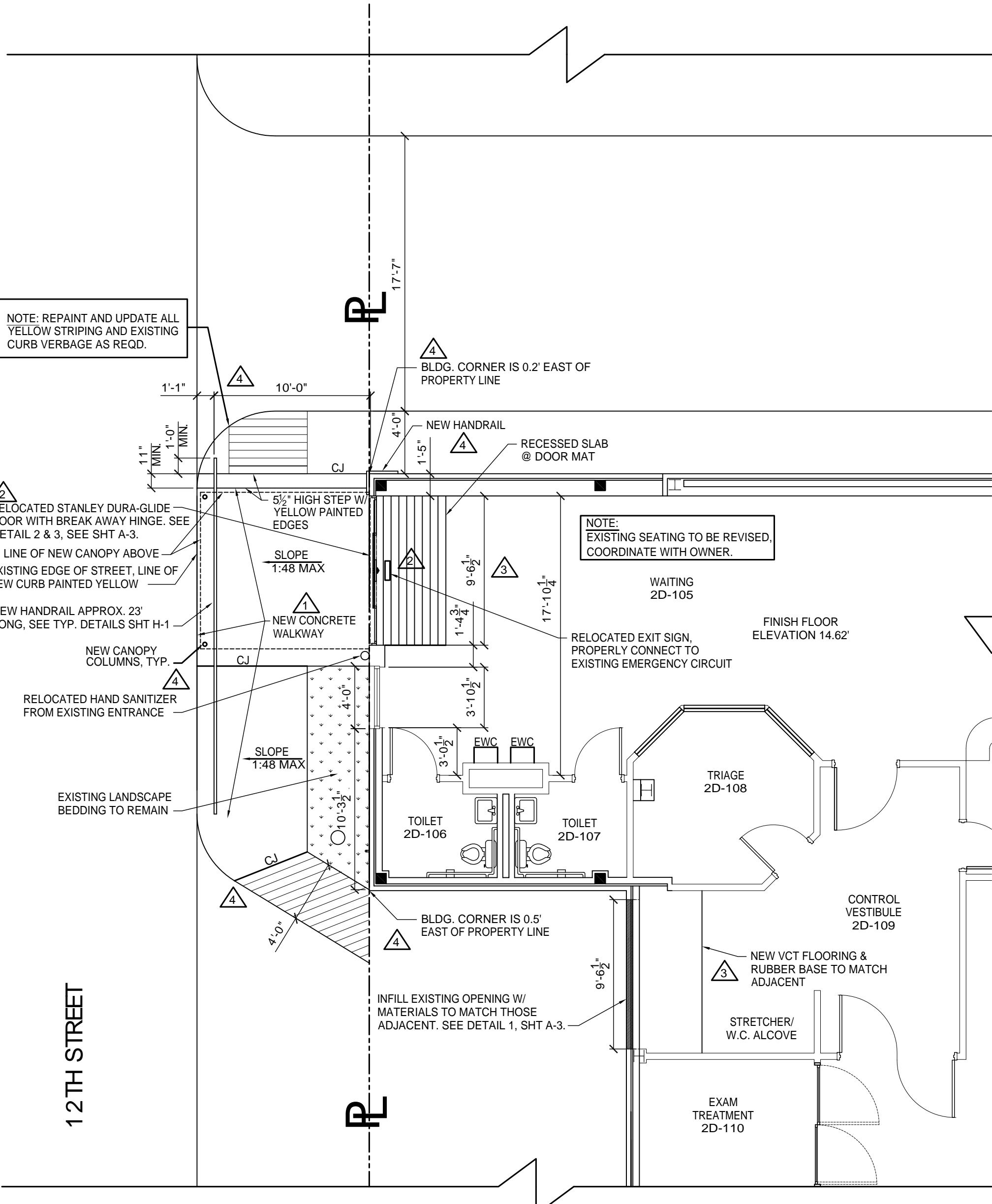


NOTE: REPAINT AND UPDATE ALL YELLOW STRIPING AND EXISTING CURB VERBAGE AS REQD.

NOTE: EXISTING SEATING TO BE REVISED, COORDINATE WITH OWNER.

NOTE: FOR GENERAL NOTES, DETAILS AND SPECS SEE SHEET A-3.



NOTE: REPAINT AND UPDATE ALL YELLOW STRIPING AND EXISTING CURB VERBAGE AS REQD.

NOTE: EXISTING SEATING TO BE REVISED, COORDINATE WITH OWNER.

NOTE: FOR GENERAL NOTES, DETAILS AND SPECS SEE SHEET A-3.

2 RELOCATED STANLEY DURA-GLIDE DOOR WITH BREAK AWAY HINGE. SEE DETAIL 2 & 3, SEE SHT A-3.

LINE OF NEW CANOPY ABOVE EXISTING EDGE OF STREET, LINE OF NEW CURB PAINTED YELLOW

NEW HANDRAIL APPROX. 23' LONG, SEE TYP. DETAILS SHT H-1

NEW CANOPY COLUMNS, TYP.

RELOCATED HAND SANITIZER FROM EXISTING ENTRANCE

EXISTING LANDSCAPE BEDDING TO REMAIN

4 BLDG. CORNER IS 0.2' EAST OF PROPERTY LINE

NEW HANDRAIL

RECESSED SLAB @ DOOR MAT

5 1/2" HIGH STEP W/ YELLOW PAINTED EDGES

SLOPE 1:48 MAX

1 NEW CONCRETE WALKWAY

SLOPE 1:48 MAX

NOTE: EXISTING SEATING TO BE REVISED, COORDINATE WITH OWNER.

WAITING 2D-105

FINISH FLOOR ELEVATION 14.62'

RELOCATED EXIT SIGN, PROPERLY CONNECT TO EXISTING EMERGENCY CIRCUIT

TRIAGE 2D-108

TOILET 2D-106

TOILET 2D-107

CONTROL VESTIBULE 2D-109

4 BLDG. CORNER IS 0.5' EAST OF PROPERTY LINE

INFILL EXISTING OPENING W/ MATERIALS TO MATCH THOSE ADJACENT. SEE DETAIL 1, SHT A-3.

3 NEW VCT FLOORING & RUBBER BASE TO MATCH ADJACENT

STRETCHER/ W.C. ALCOVE

EXAM TREATMENT 2D-110

12TH STREET

NEW PLAN

