

**DAMMON ENGINEERING, INC.**

CHIEF ENGINEER  
EMMETT  
DAMMON, P.E.

CHIEF ARCHITECT  
ROBERT  
WILTSE

1095 FLORIDA AVENUE  
SLIDELL, LA. 70458  
OFFICE: 985-649-5832  
FAX: 985-641-5950

WEBSITE:  
WWW.DAMMONENGINEERING.COM

EMAIL:  
DAMMONENG@BELLSOUTH.NET

ARCHITECTURE  
ENGINEERING  
STUDIES  
PLANNING  
INVESTIGATION  
EXPERT WITNESS

SOUTHEAST  
LOUISIANA  
VETERANS  
HEALTH CARE  
SYSTEM

SITE  
PLAN

REV:

SCALE: AS NOTED

JOB#: 2009

DATE: 02-08-09

SHEET 2

C-2

OF 14

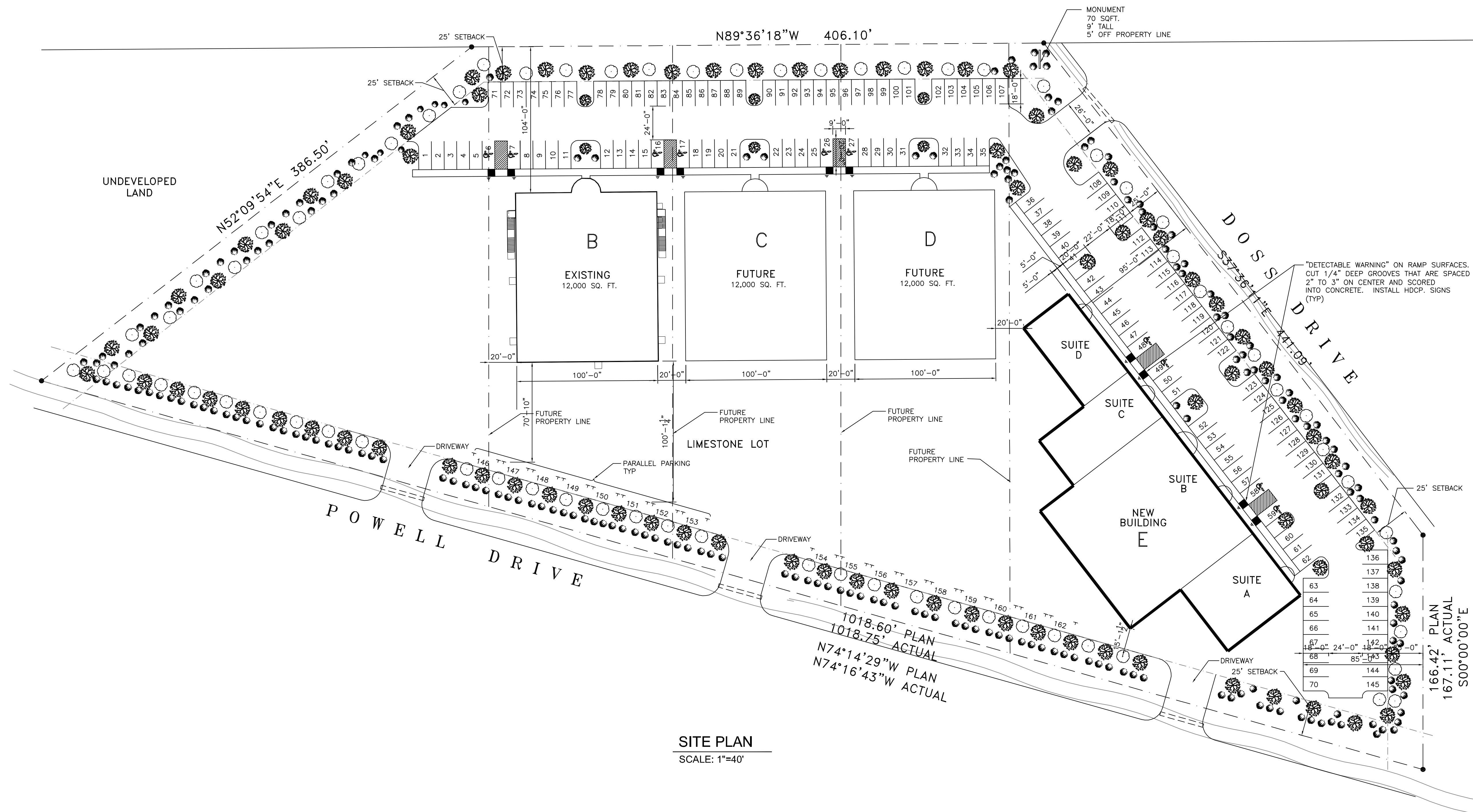
**PARKING REQUIREMENTS:**

- 1 SPACE PER 350 SQ.FT. OF OFFICE SPACE
- 1 SPACE PER 750 SQ.F.T. OF WAREHOUSE SPACE
- TOTAL REQUIRED=160
- TOTAL PROVIDED=162

**LEGEND:**

- - - - - PROPERTY LINE
- - - - - SETBACK LINE
- - - - - NEW BUILDING
- CLASS "A" TREE--MINIMUM OF 10' TO 12' HIGH, CALIPER OF 2-1/2" MEASURED AT 1-1/2 FT ABOVE THE GROUND
- CLASS "B" TREE--MINIMUM OF 8' TO 10' HIGH, CALIPER OF 1-1/2" MEASURED AT 1-1/2 FT ABOVE THE GROUND
- SHRUB

U . S . I N T E R S T A T E   H W Y .   1 2



**SITE PLAN**  
SCALE: 1"=40'



ERROR: syntaxerror  
OFFENDING COMMAND: --nostringval--

STACK:

/Title  
-mark-