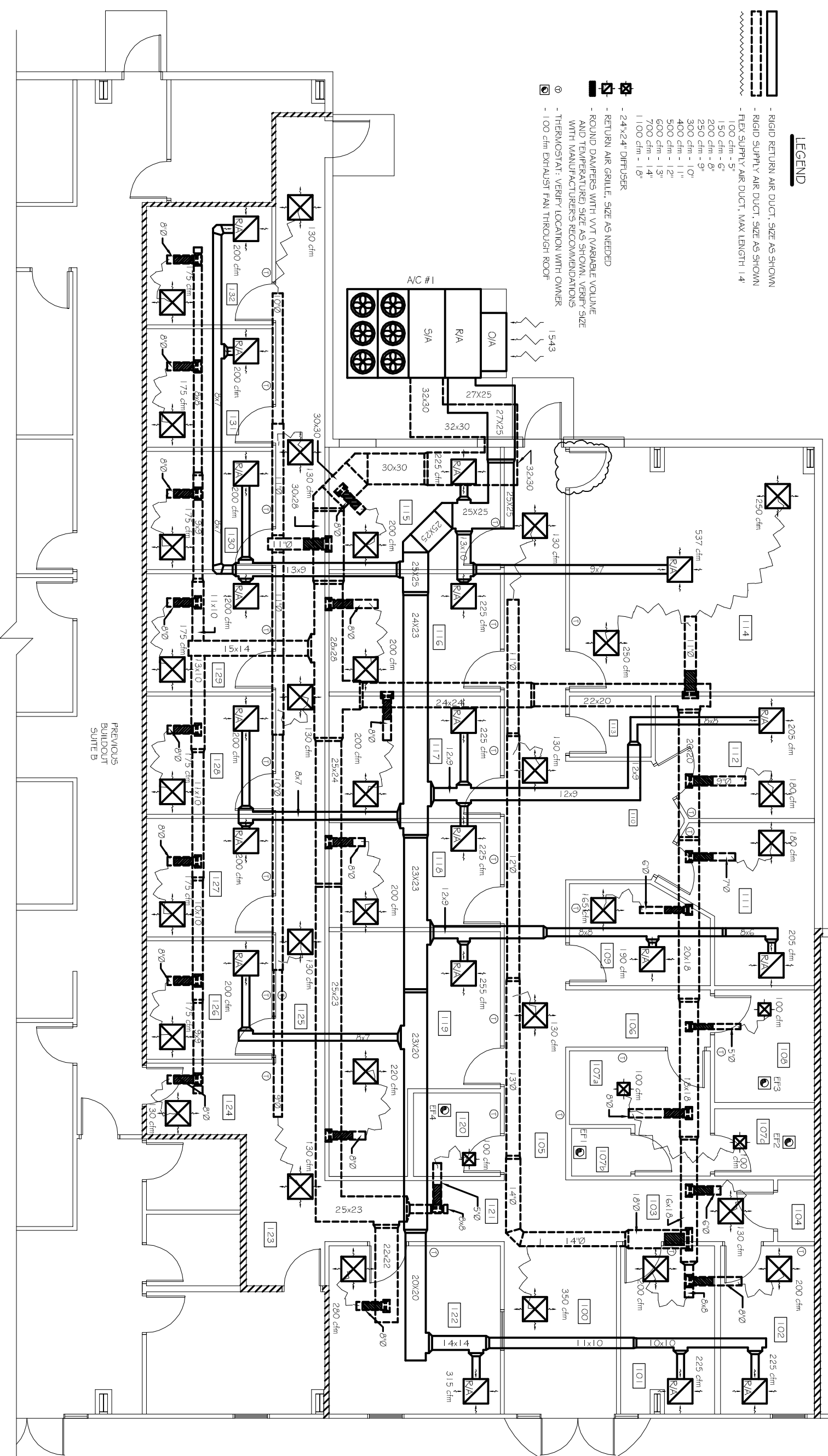


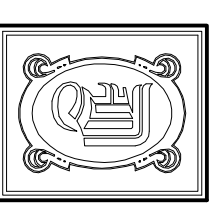
AC UNIT SCHEDULE						
NO.	TOTAL BLDG	CFM	O.A.	HEAT (KW)	ELECTRICAL MCA/ EXT BRK	COMMENTS
1	15 BLDG	6000	1543	40	230V/3Ø	CARRIER

LEGEND

- RIGID RETURN AIR DUCT, SIZE AS SHOWN
- RIGID SUPPLY AIR DUCT, SIZE AS SHOWN
- FLEX SUPPLY AIR DUCT, MAX LENGTH 14'
- 100 cfm - 5"
- 150 cfm - 6"
- 200 cfm - 8"
- 250 cfm - 9"
- 300 cfm - 10"
- 400 cfm - 11"
- 500 cfm - 12"
- 600 cfm - 13"
- 700 cfm - 14"
- 1000 cfm - 18"
- 24"x24" DIFFUSER
- RETURN AIR GRILLE, SIZE AS NEEDED
- ROUND DAMPERS WITH VMT VARIABLE VOLUME AND TEMPERATURED SIZE AS SHOWN, VERIFY SIZE WITH MANUFACTURER'S RECOMMENDATIONS
- ⊖ THERMOSTAT: VERIFY LOCATION WITH OWNER
- ⊙ 100 cfm EXHAUST FAN THROUGH ROOF



MECHANICAL PLAN-SUITE C
SCALE: 1/4"=1'



DAMMON
ENGINEERING, INC.

CHIEF ENGINEER
EMMETT
DAMMON, P.E.

CHIEF ARCHITECT
ROBERT
WILTSE

1095 FLORIDA AVENUE
SLIDELL, LA, 70458
OFFICE: 985-649-5832
FAX: 985-641-5950

WWW.DAMMONENGINEERING.COM
EMAIL:
DAMMONENG@BELLFLOWER.NET

ARCHITECTURE
ENGINEERING
STUDIES
PLANNING
INVESTIGATION
EXPERT WITNESS

SOUTHEAST
LOUISIANA
VETERANS
HEALTH CARE
SYSTEM

SUITE C
MECHANICAL
PLAN

REV: 5-05-09

SCALE: AS NOTED

JOB#: 2011

DATE: 04-06-09

SHEET 9

M-1

OF 14