

DAMMON
ENGINEERING, INC.

CHIEF ENGINEER
EIMETT P. E.
DAMMON, P. E.
CHIEF ARCHITECT
ROBERT WITSE

1095 FLORIDA AVENUE
SUITE 114
DUBLIN, LA. 70458
OFFICE: 985-649-5832
FAX: 985-641-5950

WWW.DAMMONENGINEERING.COM
EMAIL: DAMMON@BELL.SOUTH.NET

ARCHITECTURE
ENGINEERING
STUDIES
PLANNING
INVESTIGATION
EXPERT WITNESS

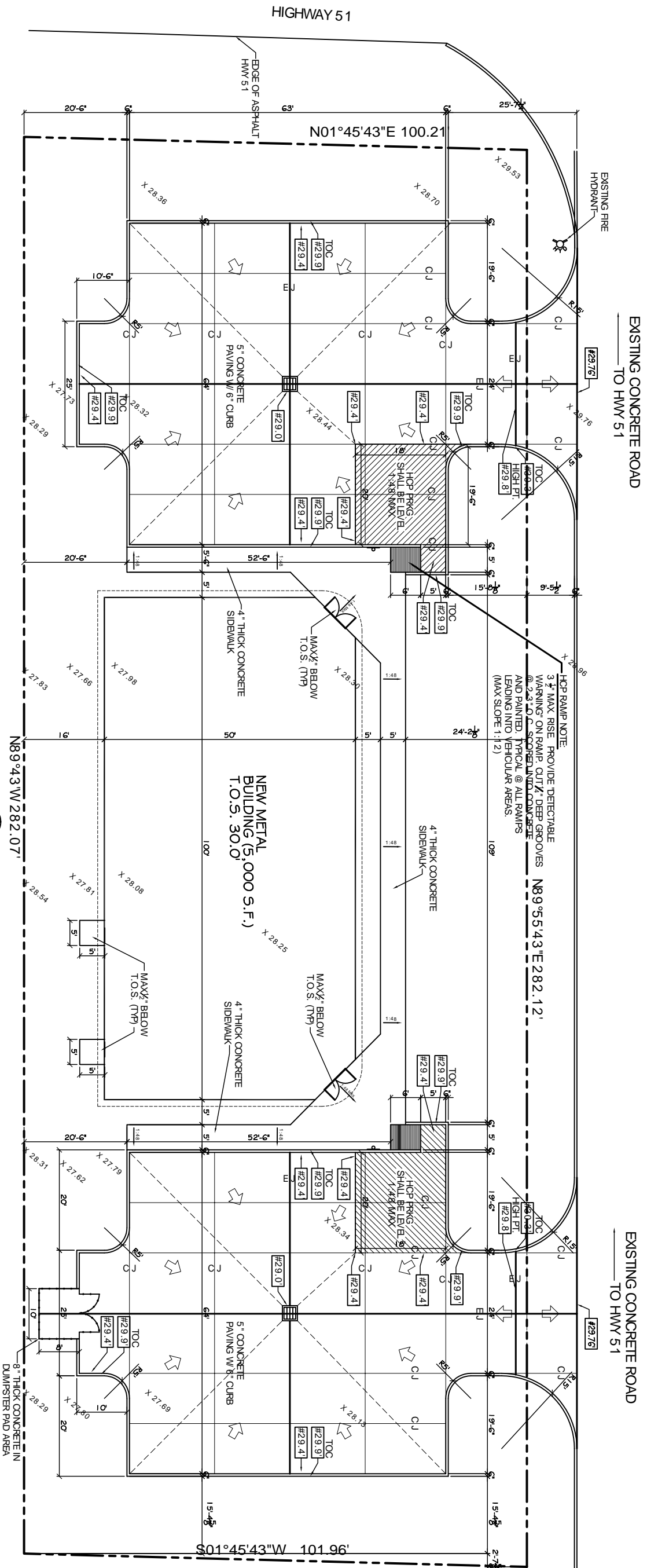
DR. EDUARDO
HERNANDEZ
HAMMOND
LOUISIANA

CHILDRENS
INTERNATIONAL
MEDICAL
GROUP
CIMG

SITE
PAVING PLAN

REV:
SCALE: AS NOTED
JOB#: 2042
DATE: 10-09-09
SHEET: 3

OF 19



SITE PAVING PLAN
SCALE: 1"=10'



LEGEND

- PROPERTY LINE
- NEW BLDG. FOOTPRINT
- SETBACK LINE
- NEW FENCE
- 6" CONCRETE CURB
- EXPANSION JOINT (30"x45')
- CONTROL JOINT (10"x15')
- INDICATES DIRECTION OF DRAINAGE
- NEW ELEVATION
- TOP OF CURB ELEVATION
- EXISTING GRADE ELEVATIONS
- CATCH BASIN

