

DAMMON
ENGINEERING, INC.
CHIEF ENGINEER
EMMETT
DAMMON, P.E.
CHIEF ARCHITECT
ROBERT
WILTSE

1095 FLORIDA AVENUE
SUDBELL, LA. 70456
OFFICE: 985-649-5832
FAX: 985-641-5950

WEBSITE:
WWW.DAMMONENGINEERING.COM
EMAIL:
DAMMONENG@BELLSOUTH.NET

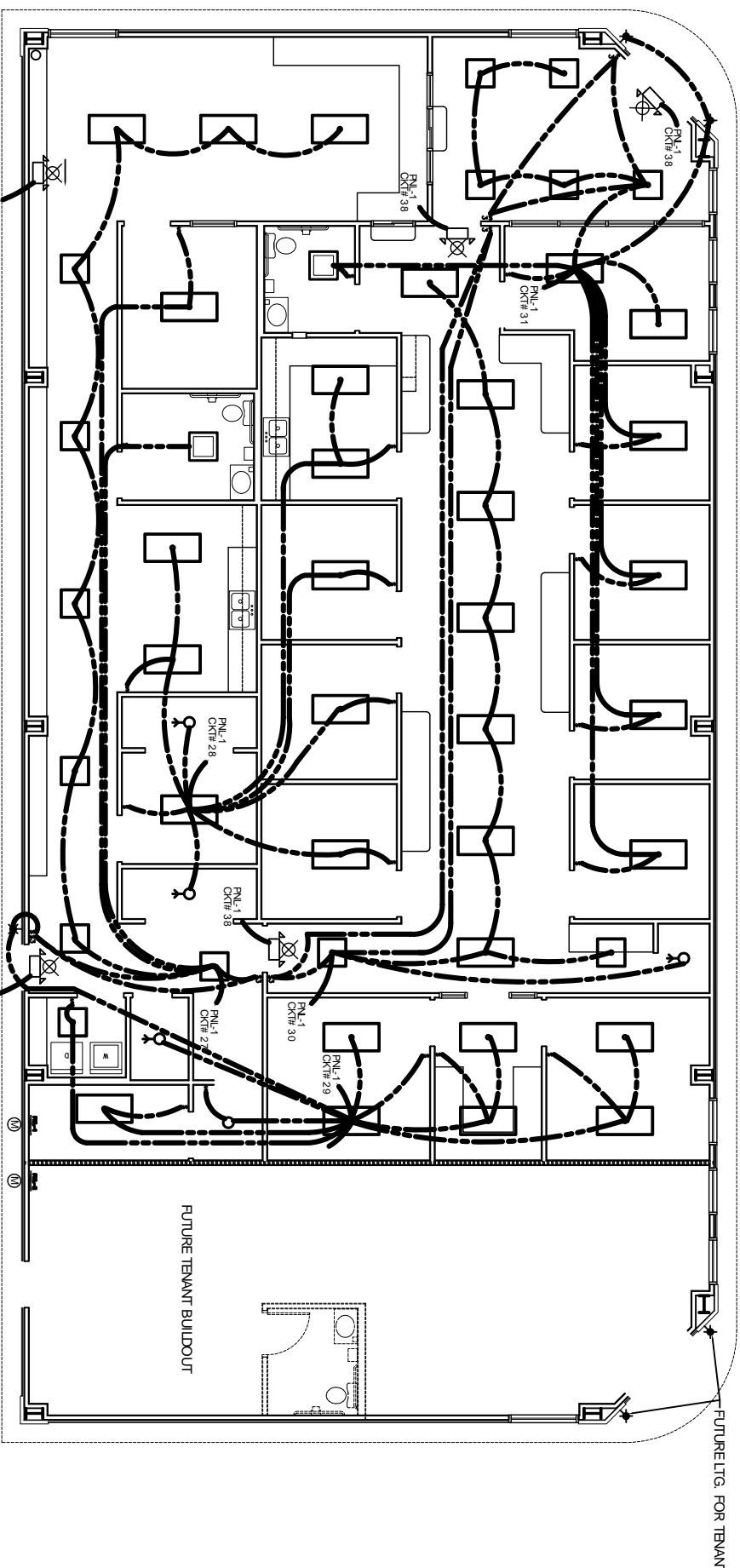
ARCHITECTURE
ENGINEERING
STUDIES
PLANNING
INVESTIGATION
EXPERT WITNESS

DR. EDUARDO
HERNANDEZ
HAMMOND
LOUISIANA

CHILDRENS
INTERNATIONAL
MEDICAL
GROUP
CLING

**LIGHTING
PLAN**

REV:
SCALE AS NOTED
JOB#: 2042
DATE: 10-29-09
SHEET 18



LIGHTING PLAN
SCALE: 3/16"=1'



- LEGEND**
- - 2'x4' FLUORESCENT LIGHT
 - - 2'x2' FLUORESCENT LIGHT
 - - 2'x2' VENTLIGHT
 - - STANDARD BULB FIXTURE
 - - STANDARD BULB FIXTURE
 - - CAN LIGHT
 - ⬇ - EMERGENCY LIGHT W/ 90 MIN. BATTERY BACKUP
 - ⬆ - EXTERIOR WATERPROOF WALL MOUNTED LIGHT W/ 90 MIN. BATTERY BACKUP AND PHOTOCELL
 - ⊗ - EXT LIGHT W/90 MIN. BATTERYBACK-UP
 - ⊗ - EXT/EMERGENCY LIGHT COMBO W/ 90 MIN. BATTERY BACKUP DIRECTIONAL ARROWS AS INDICATED
 - \$ - SWITCH
 - \$3 - 3-WAY SWITCH
 - \$4 - 4-WAY SWITCH
 - ⬆ - POWER PANEL
 - * - TO LIGHT FIXTURE OVER H/VAC/WATER HEATER DECK ABOVE

NO.	TYPE	LOAD DESCRIPTION	RECORD	LOAD (VA)	RECORD	LOAD (VA)	NO.	TYPE	LOAD DESCRIPTION	RECORD	LOAD (VA)
1	#	CUL#1 5-TON	40	3465	2	40	2	#	CUL#2 5-TON	40	3465
3	#	Avg#1 LOW ELCT HEAT	60	5000	2	60	4	#	Avg#2 LOW ELCT HEAT	60	5000
5	#	RESERVOIRS	20	1120	1	20	6	#	RESERVOIRS	20	1120
7	#	RESERVOIRS	20	1120	1	20	8	#	RESERVOIRS	20	1120
9	#	RESERVOIRS	20	1120	1	20	10	#	RESERVOIRS	20	1120
11	#	RESERVOIRS	20	1120	1	20	12	#	RESERVOIRS	20	1120
13	#	RESERVOIRS	20	1120	1	20	14	#	RESERVOIRS	20	1120
15	#	RESERVOIRS	20	1120	1	20	16	#	RESERVOIRS	20	1120
17	#	RESERVOIRS	20	1120	1	20	18	#	RESERVOIRS	20	1120
19	#	RESERVOIRS	20	1120	1	20	20	#	RESERVOIRS	20	1120
21	#	RESERVOIRS	20	1120	1	20	22	#	RESERVOIRS	20	1120
23	#	RESERVOIRS	20	1120	1	20	24	#	RESERVOIRS	20	1120
25	#	RESERVOIRS	20	1120	1	20	26	#	RESERVOIRS	20	1120
27	#	RESERVOIRS	20	1120	1	20	28	#	RESERVOIRS	20	1120
29	#	RESERVOIRS	20	1120	1	20	30	#	RESERVOIRS	20	1120
31	#	RESERVOIRS	20	1120	1	20	32	#	RESERVOIRS	20	1120
33	#	RESERVOIRS	20	1120	1	20	34	#	RESERVOIRS	20	1120
35	#	RESERVOIRS	20	1120	1	20	36	#	RESERVOIRS	20	1120
37	#	RESERVOIRS	20	1120	1	20	38	#	RESERVOIRS	20	1120
39	#	RESERVOIRS	20	1120	1	20	40	#	RESERVOIRS	20	1120
41	#	RESERVOIRS	20	1120	1	20	42	#	RESERVOIRS	20	1120