

**DAMMON**  
ENGINEERING, INC.

CHIEF ENGINEER  
EMMETT  
DAMMON, P.E.

CHIEF ARCHITECT  
ROBERT  
WILTSE

1095 FLORIDA AVENUE  
SLIDELL, LA. 70458  
OFFICE: 985-649-5832  
FAX: 985-641-5950

WEBSITE:  
WWW.DAMMONENGINEERING.COM

EMAIL:  
DAMMONENG@BELLSOUTH.NET

- ARCHITECTURE
- ENGINEERING
- STUDIES
- PLANNING
- INVESTIGATION
- EXPERT WITNESS

HERNANDEZ  
MEDICAL  
CENTER  
HAMMOND  
LOUISIANA

FLOOR  
PLAN

REV:

SCALE: AS NOTED

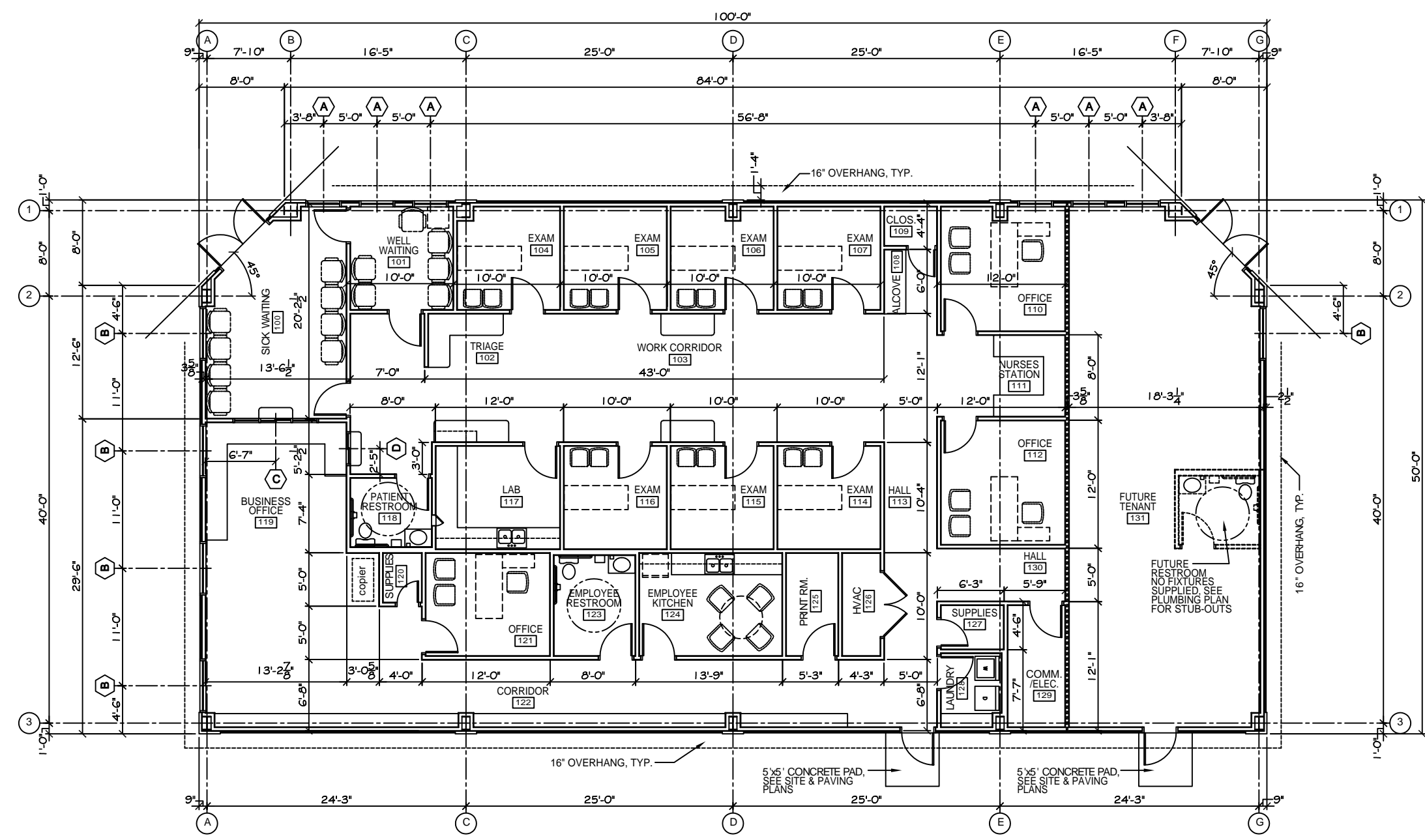
JOB#: 2042

DATE: 10-05-09

SHEET

**A-1**

OF



FLOOR PLAN  
SCALE: 3/16"=1'