

DAMMON
ENGINEERING, INC.

CHIEF ENGINEER
EMMETT
DAMMON, P. E.
CHIEF ARCHITECT
ROBERT
MILTSE

1095 FLORIDA AVENUE
SUITE 100
SLIDELL, LA 70458
OFFICE: 985-649-5832
FAX: 985-641-3990

WEBSITE:
WWW.DAMMONENGINEERING.COM
EMAIL:
DAMMONENG@BELLOUTH.NET

ARCHITECTURE
ENGINEERING
STUDIES
PLANNING
INVESTIGATION
EXPERT WITNESS

DR. EDUARDO
HERNANDEZ
HAMMOND
LOUISIANA

CHILDRENS
INTERNATIONAL
MEDICAL
GROUP
CIMG

CEILING
PLAN

REV:

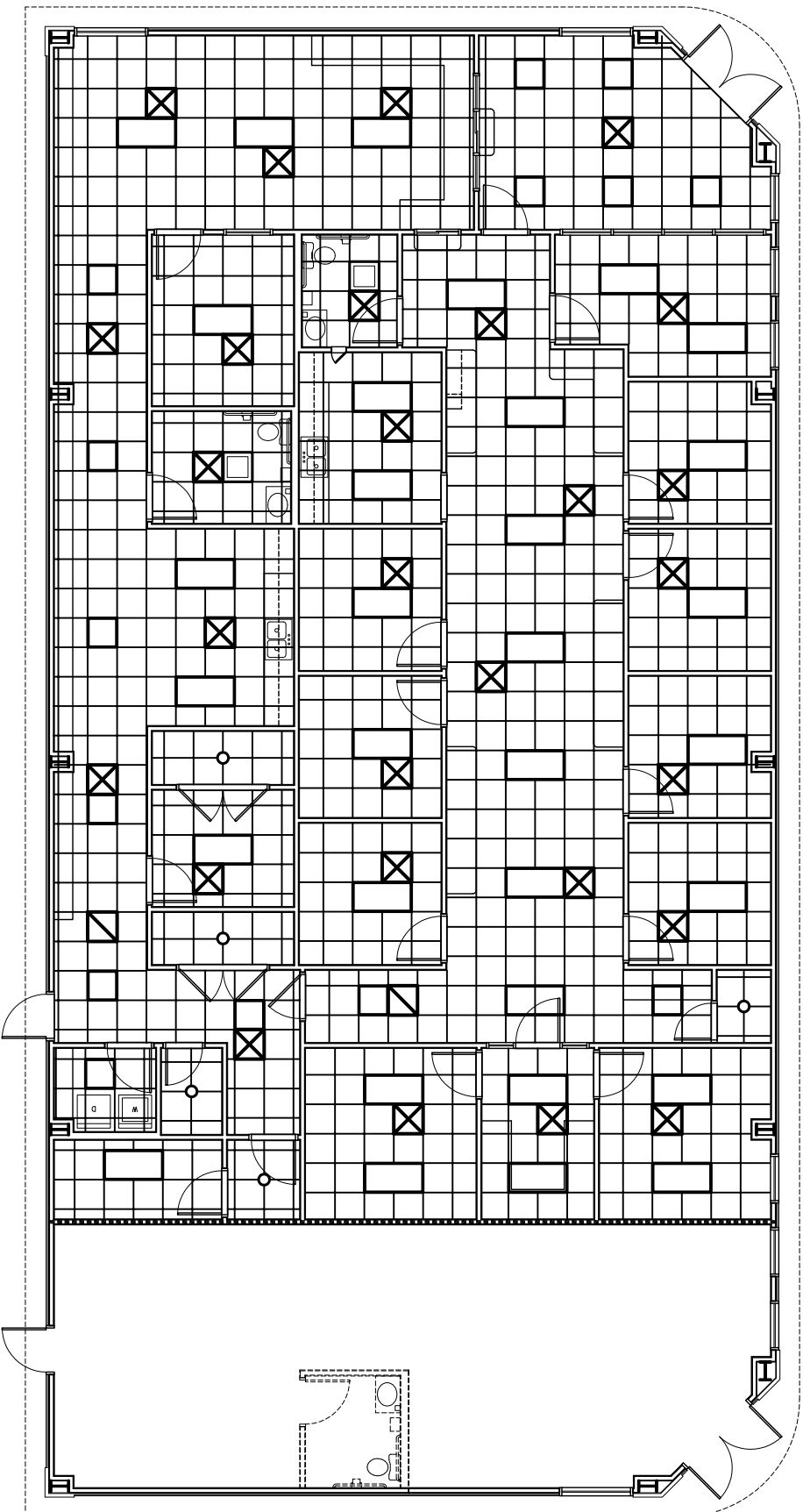
SCALE: AS NOTED

JOB#: 2042

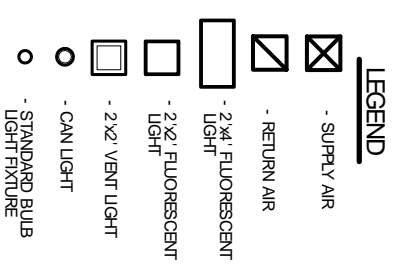
DATE: 10-29-09

SHEET

A-5



REFLECTED CEILING PLAN
SCALE: 3/16" = 1'



NOT FOR CONSTRUCTION