

DAMMON
ENGINEERING, INC.

CHIEF ENGINEER
EMMETT
DAMMON, P.E.

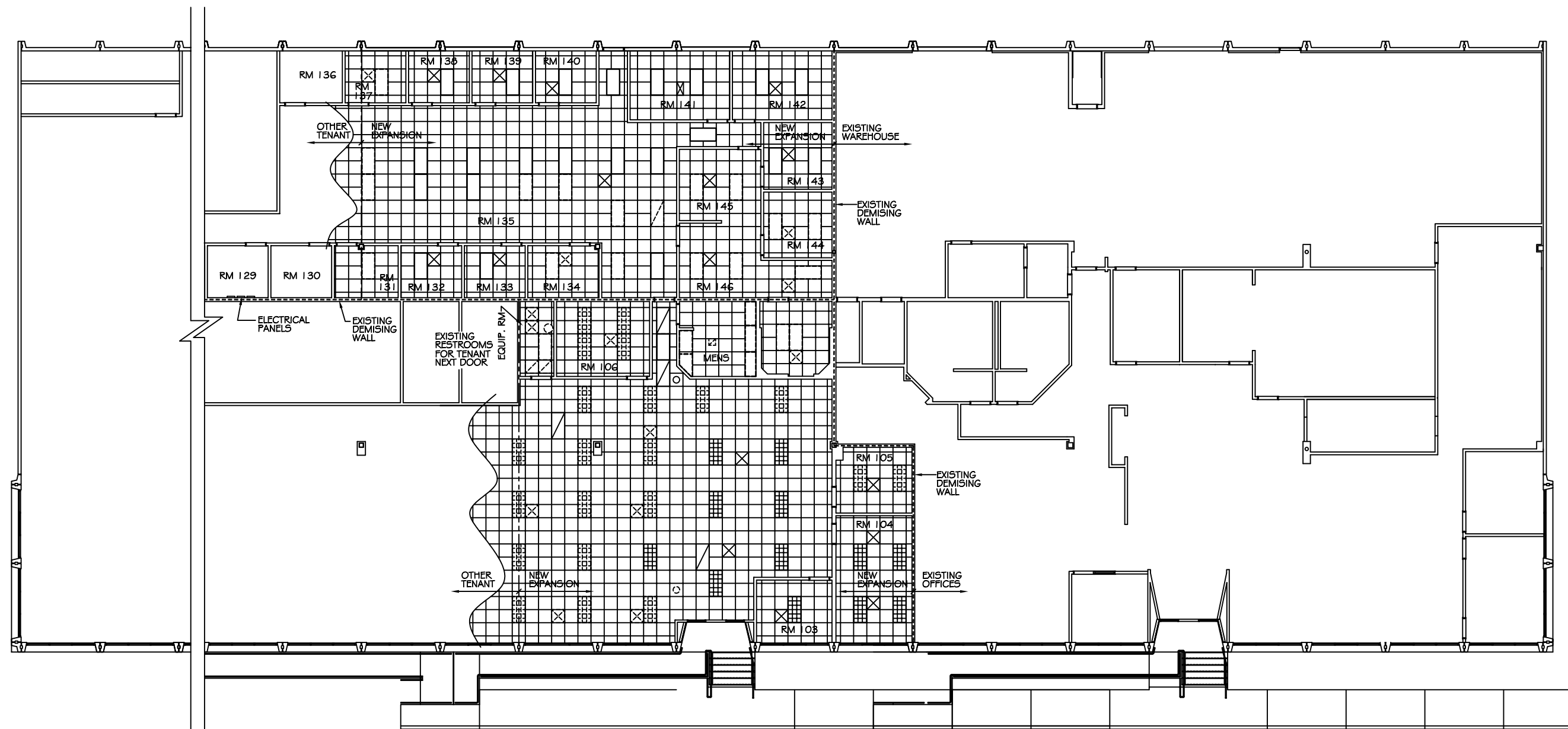
CHIEF ARCHITECT
ROBERT
WILTSE

1095 FLORIDA AVENUE
SLIDELL, LA. 70458
OFFICE: 985-649-5832
FAX: 985-641-5950

WEBSITE:
WWW.DAMMONENGINEERING.COM

EMAIL:
DAMMONENG@BELLSOUTH.NET

ARCHITECTURE
ENGINEERING
STUDIES
PLANNING
INVESTIGATION
EXPERT WITNESS



REFLECTED CEILING DEMO PLAN
SCALE: 1/8" = 1'-0"

LEGEND

- | | | | |
|--|---|--|---|
| | - EXISTING 2x4' FLUORESCENT LIGHT FIXTURE TO REMAIN | | - 2x4' FLUORESCENT LIGHT FIXTURE TO BE REMOVED OR RELOCATED |
| | - EXISTING 2x4' PARABOLIC LIGHT FIXTURE TO REMAIN | | - 2x4' PARABOLIC LIGHT FIXTURE TO BE REMOVED OR RELOCATED |
| | - EXISTING HVAC SUPPLY AIR GRILLE TO REMAIN | | - HVAC SUPPLY AIR GRILLE TO BE REMOVED OR RELOCATED |
| | - EXISTING HVAC RETURN AIR GRILLE TO REMAIN | | - HVAC RETURN AIR GRILLE TO BE REMOVED OR RELOCATED |
| | - INTERCOM SPEAKER | | |
| | - EXISTING CEILING GRID TO REMAIN | | |

PATTERSON
DENTAL
OFFICE
RENOVATION

REFLECTED
CEILING
DEMOLITION
PLAN

REV:

SCALE: AS NOTED

JOB#: 2076

DATE: 10-13-10

SHEET

D-2

PRELIMINARY (NOT FOR CONSTRUCTION)

OF