

DAMMON ENGINEERING, INC.

CHIEF ENGINEER
EMMETT
DAMMON, P.E.

CHIEF ARCHITECT
ROBERT
WILTSE

1095 FLORIDA AVENUE
SLIDELL, LA. 70458
OFFICE: 985-649-5832
FAX: 985-641-5950

WEBSITE:
WWW.DAMMONENGINEERING.COM

EMAIL:
DAMMONENG@BELLSOUTH.NET

- ARCHITECTURE
- ENGINEERING
- STUDIES
- PLANNING
- INVESTIGATION
- EXPERT WITNESS

PATTERSON
DENTAL
OFFICE
RENOVATION

NEW
MECHANICAL
PLAN

REV:

SCALE: AS NOTED

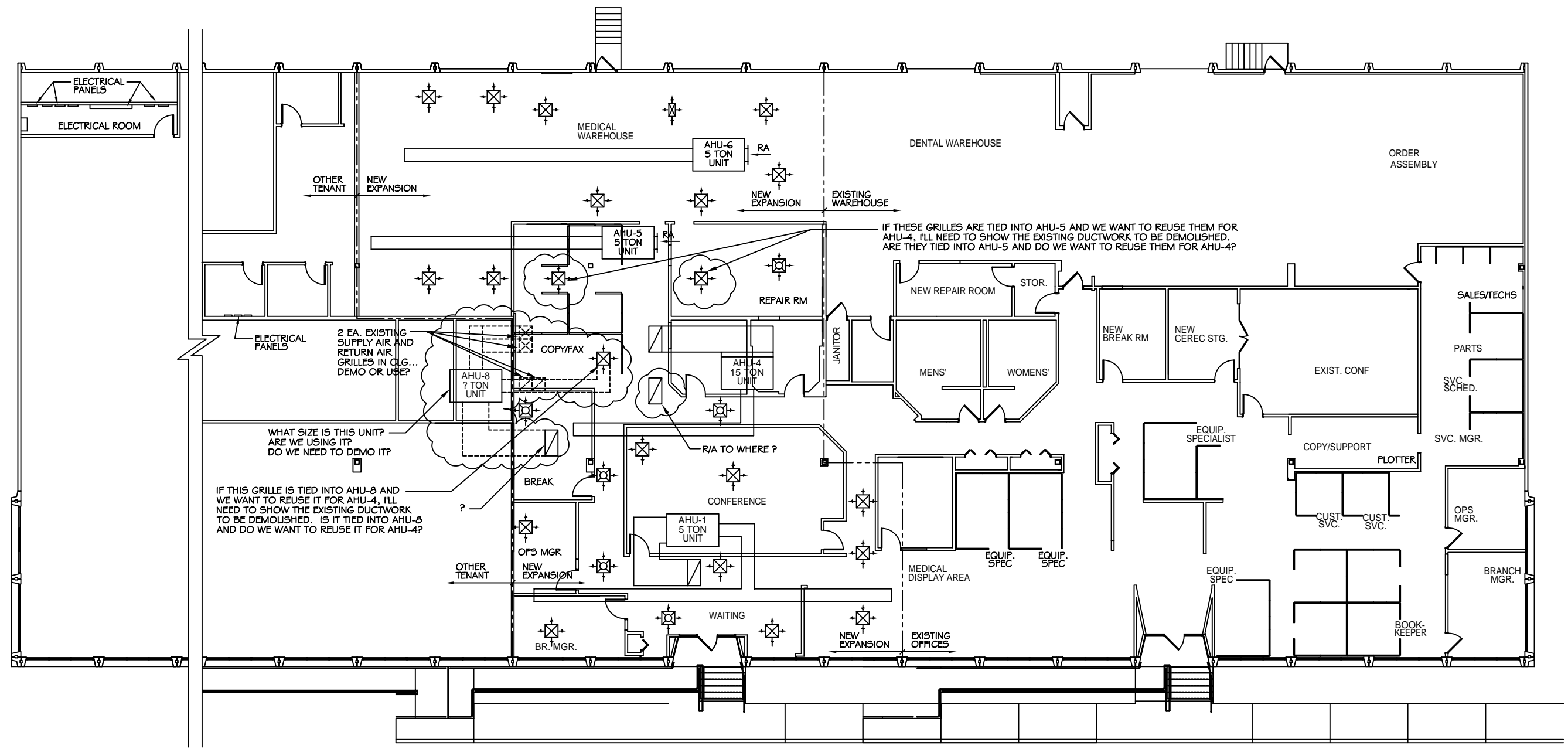
JOB#: 2076

DATE: 10-14-10

SHEET

M-1

OF



LEGEND

- EXISTING SUPPLY AIR GRILLE
- NEW SUPPLY AIR GRILLE
- EXISTING RETURN AIR GRILLES
- NEW RETURN AIR GRILLE
- EXISTING SUPPLY AIR DUCT
- EXISTING RETURN AIR DUCT
- NEW SUPPLY AIR DUCT
- NEW RETURN AIR DUCT

NEW MECHANICAL PLAN

SCALE: 1/8" = 1'-0"

PRELIMINARY (NOT FOR CONSTRUCTION)