

DAMMON ENGINEERING, INC.

CHIEF ENGINEER
EMMETT
DAMMON, P.E.

CHIEF ARCHITECT
ROBERT
WILTSE

1095 FLORIDA AVENUE
SLIDELL, LA. 70458
OFFICE: 985-649-5832
FAX: 985-641-5950

WEBSITE:
WWW.DAMMONENGINEERING.COM

EMAIL:
DAMMONENG@BELLSOUTH.NET

ARCHITECTURE
ENGINEERING
STUDIES
PLANNING
INVESTIGATION
EXPERT WITNESS

OFFICE &
WAREHOUSE
EXPANSION &
RENOVATION

PATTERSON
DENTAL SUPPLY
107 MALLARD ST.
SAINT ROSE, LA
70087

REFLECTED
CEILING
DEMOLITION
PLAN

REV:

SCALE: AS NOTED

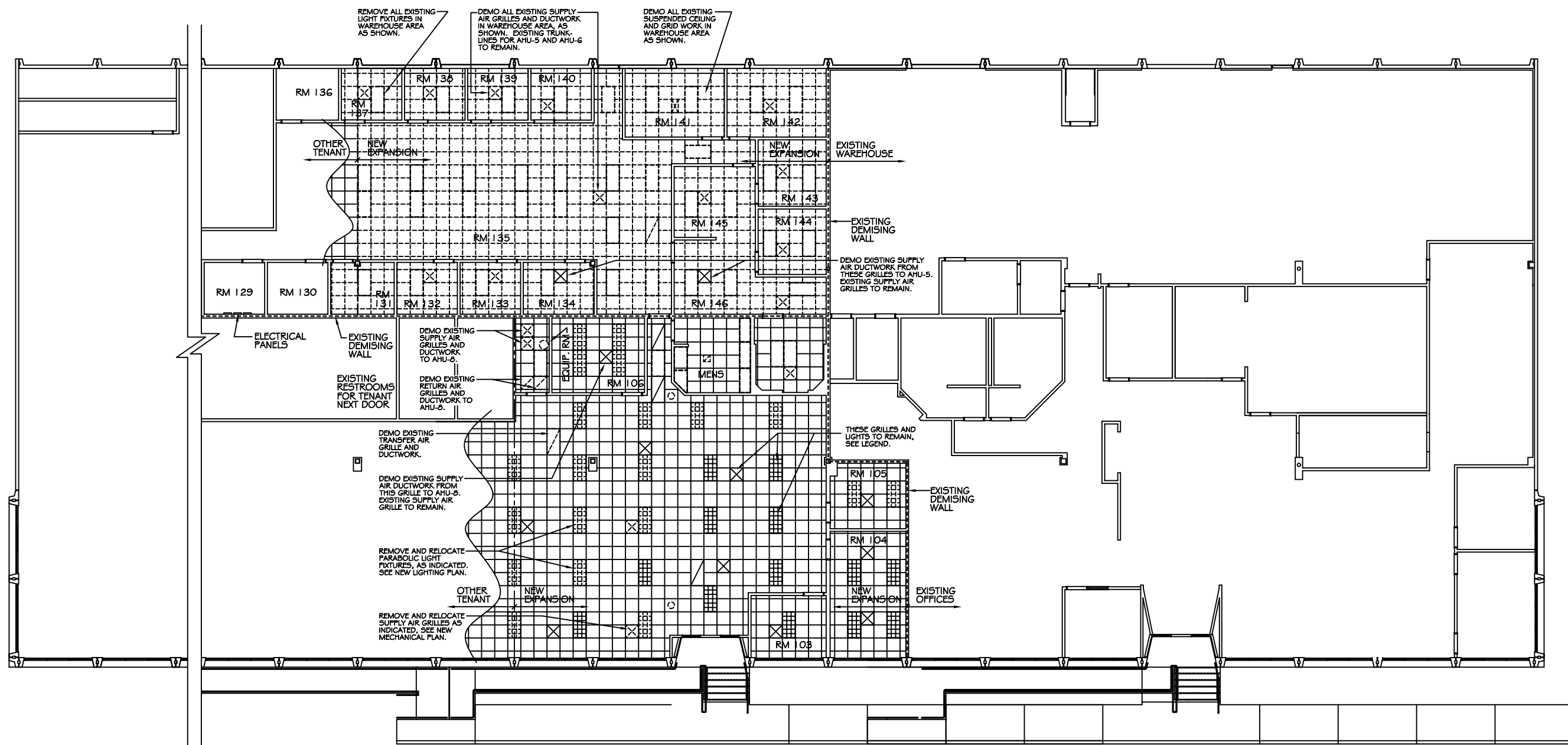
JOB#: 2076

DATE: 11-05-10

SHEET 3

D-2

OF 11



REFLECTED CEILING DEMO PLAN

SCALE: 1/8" = 1'-0"

LEGEND

- EXISTING 2x4' FLUORESCENT LIGHT FIXTURE TO REMAIN
- 2x4' FLUORESCENT LIGHT FIXTURE TO BE REMOVED OR RELOCATED
- EXISTING 2x4' PARABOLIC LIGHT FIXTURE TO REMAIN
- 2x4' PARABOLIC LIGHT FIXTURE TO BE REMOVED OR RELOCATED
- EXISTING HVAC SUPPLY AIR GRILLE TO REMAIN
- HVAC SUPPLY AIR GRILLE TO BE REMOVED OR RELOCATED
- EXISTING HVAC RETURN AIR GRILLE TO REMAIN
- HVAC RETURN AIR GRILLE TO BE REMOVED OR RELOCATED
- INTERCOM SPEAKER
- EXISTING CEILING GRID TO REMAIN

PRELIMINARY (NOT FOR CONSTRUCTION)