

DAMMON ENGINEERING, INC.

CHIEF ENGINEER
EMMETT DAMMON, P.E.

CHIEF ARCHITECT
ROBERT WILTSE

1095 FLORIDA AVENUE
SLIDELL, LA. 70458
OFFICE: 985-649-5832
FAX: 985-641-5950

WEBSITE:
WWW.DAMMONENGINEERING.COM

EMAIL:
DAMMONENG@BELLSOUTH.NET

ARCHITECTURE
ENGINEERING
STUDIES
PLANNING
INVESTIGATION
EXPERT WITNESS

OFFICE &
WAREHOUSE
EXPANSION &
RENOVATION

PATTERSON
DENTAL SUPPLY
107 MALLARD ST.
SAINT ROSE, LA
70087

NEW
ELECTRICAL
POWER
PLAN

REV:

SCALE: AS NOTED

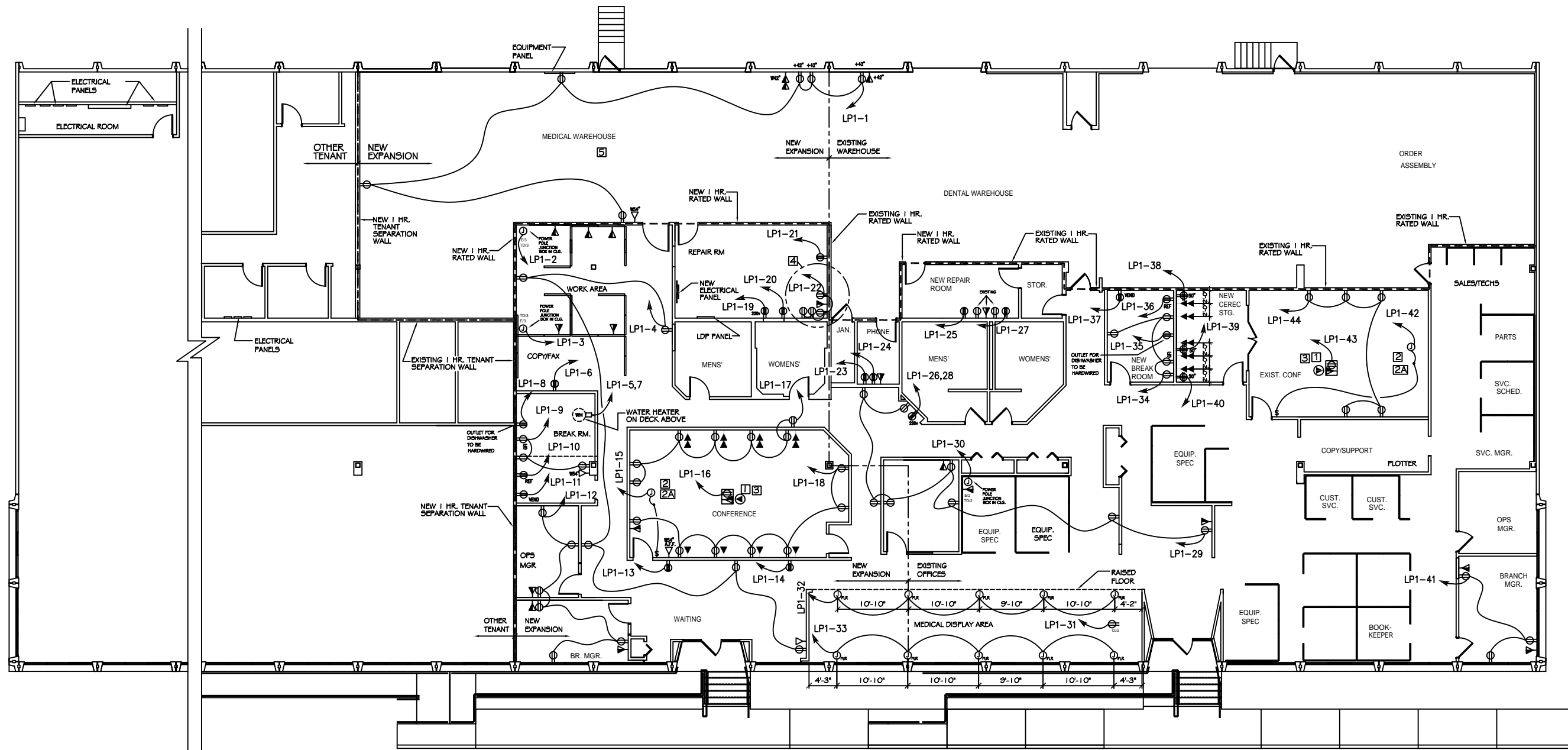
JOB#: 2076

DATE: 11-05-10

SHEET 8

E-1

OF 11



NEW ELECTRICAL POWER PLAN

SCALE: 1/8" = 1'-0"

ELECTRICAL LEGEND

- WALL MOUNTED DUPLEX OUTLET WITH DEDICATED CIRCUIT & GROUND.
WALL MOUNTED 4-PLEX OUTLET WITH DEDICATED CIRCUIT & GROUND.
WALL MOUNTED 4-PLEX OUTLET WITH DEDICATED CIRCUIT.
WALL MOUNTED DUPLEX OUTLET.
WALL MOUNTED DUPLEX OUTLET - 220 VOLT/20 AMP.
CEILING MOUNTED DUPLEX OUTLET - 120 VOLT/20 AMP.
DENOTES CEILING MOUNTED DUPLEX OUTLET AMP.
+42" DENOTES OUTLET HEIGHT ABOVE FINISH FLOOR
GFI GROUND FAULT INTERRUPT DUPLEX OUTLET MOUNTED AT 42" AFF - U.O.N.

- CEILING MOUNTED DUAL JUNCTION BOXES TO PROVIDE ISOLATED POWER & TEL/DATA TO SYSTEMS FURNITURE.
RECESSED ACCENT LIGHTING TO BE ON A DIMMER & SWITCHED SEPARATELY THEN THE STD PARABOLIC LIGHTING.
JUNCTION BOX (CEILING OR FLOOR MOUNTED)

KEYNOTES

- OUTLET & DATA FOR CEILING MOUNTED PROJECTOR.
OUTLET FOR CEILING MOUNTED PROJECTION SCREEN.
BUILDING CONTRACTOR TO INSTALL LCD PROJECTOR MOUNTING BRACKET AND RUN VGA CABLE WITH AUDIO, FROM LCD PROJECTOR TO WALL PLATE IN FRONT OF TRAINING ROOM.
PROVIDE DIMMER OR (2) LIGHT LEVELS IN CONFERENCE ROOM FOR PRESENTATIONS.
ALL OUTLETS/DATA TO BE LOCATED AT 42" H A.F.F. & CENTERED WITHIN THE 48" AREA AS SHOWN.
FINAL ELECTRICAL AND DATA LOCATIONS IN THE WAREHOUSE TO BE COORDINATED WITH CLIENT.

DATA LEGEND:

- DUAL TEL/DATA OUTLET
QUAD-DUAL TEL/DATA OUTLET
DUAL DATA ONLY
DATA ONLY OUTLET
PHONE ONLY OUTLET BY TENANT'S VENDOR.
FAX
W42" WALL MOUNTED (42"A.F.F. - HEIGHT TO BE NOTED ON PLAN)
FLUSH FLOOR TEL/DATA DUPLEX OUTLET.

PRELIMINARY (NOT FOR CONSTRUCTION)