

PLUMBING SPECIFICATIONS

THE PLUMBER SHALL RUN ALL PIPING IN ACCORDANCE WITH LOCAL REGULATIONS. ALL PLUMBING LINES TO BE CONCEALED, UNLESS OTHERWISE SPECIFIED. DURING THE DENTAL EQUIPMENT INSTALLATION, THE PLUMBER MUST BE ON THE JOB TO CONNECT ALL PLUMBING LINES TO THE DENTAL UNITS, MODULAR CABINET SINKS AND FAUCET, AIR COMPRESSOR AND DRYER, VACUUM SYSTEM, FILM PROCESSOR, GAS AND AIR VALVES, AND NITROUS OXIDE/OXYGEN VALVES. MANUFACTURER'S SPECIFICATION TEMPLATES FOR ALL DENTAL EQUIPMENT WILL BE PROVIDED BY THE PATTERSON DENTAL REPRESENTATIVE. THE REPRESENTATIVE WILL ALSO SUPERVISE THE LOCATION OF THOSE TEMPLATES.

ALL VACUUM AND COMPRESSOR UNITS MUST BE INSTALLED AND OPERATED IN A THERMOSTATICALLY OR OTHERWISE STABLE AMBIENT TEMPERATURE ENVIRONMENT. FORCED AIR AND HVAC INPUT MUST BE USED IN ADDITION TO AN EXHAUST FAN IF NORMAL AMBIENT TEMPERATURES VARY FROM SPECIFIED OPERATING TEMPERATURE RANGE.

DENTAL UNIT - INSTALL 1/2" FILTERED COLD WATER, 1/2" AIR, AND 5/8" OD VACUUM PIPES, WHERE SPECIFIED, ABOVE FINISHED FLOOR OR OUT OF WALL. SEE MANUFACTURER'S SPECIFICATION TEMPLATE FOR POSITIONING. THESE DIMENSIONS ARE CRITICAL AND MUST COMPLY WITH MEASUREMENTS OF MANUFACTURER'S TEMPLATES. ADAPTERS AND VALVES, WHERE INDICATED, MUST BE RIGIDLY CONFORMED TO. INSTALL ACCESSIBLE WATER AND AIR VALVES FOR EACH UNIT. PROVIDE WATER PRESSURE REGULATOR, IF THE PRESSURE EXCEEDS 150 PSI.

FILTERED COLD WATER - 1/2" COPPER TUBING RUN FROM WATER FILTER (SBD) TO USE POINT.

WATER FILTER SYSTEM - THE PLUMBER IS TO INSTALL A WATER FILTER (WITH REPLACEABLE CARTRIDGE) WITH A SHUTOFF AND BY-PASS VALVE ASSEMBLY, PROVIDED BY THE PATTERSON DENTAL CO., TO THE COLD WATER SUPPLY FOR THE ENTIRE DENTAL PLUMBING IN THE SUITE.

AIR COMPRESSOR - STARTING FROM AIR COMPRESSOR LOCATION, RUN 1/2" COPPER AIR LINES AND TEE OFF TO DENTAL UNITS AND ALL OTHER AREAS THAT REQUIRE AIR. REDUCE THE SIZE OF LINE TO CONFORM TO MANUFACTURER'S SPECIFICATIONS. COMPRESSOR SUPPLIED BY DOCTOR AND CONNECTED BY THE PLUMBER.

AIR OUTLET - REDUCE TO 3/8" COMPRESSION ANGLE STOP FLUSH WITH WALL. COMPLY WITH MANUFACTURER'S VALVE ADAPTATION TO LINES. INSTALL AS NOTED ON PLAN.

MODULAR CABINET SINK AND SINGLE LEVER FAUCET - INSTALL WASTE, HOT AND COLD WATER LINES 18" ABOVE FLOOR. SUPPLIED AND INSTALLED BY PLUMBER UNLESS NOTED (SBD). CONNECTION OF SINK AND FAUCET TO PLUMBING LINES MUST BE DONE BY PLUMBER.

PLASTER TRAP - INSTALL FOR LAB SINK AND MODEL TRIMMER. SUPPLIED BY DOCTOR AND INSTALLED BY PLUMBER. BRACE TRAP TO SUPPORT WEIGHT OF FULL TRAP AND TO SIMPLIFY THE REMOVAL OF CANISTER FOR CLEANING (SEE DETAIL).

MODEL TRIMMER - INSTALL COLD WATER LINE WITH A 3/8" CHROME ANGLE STOP ABOVE THE COUNTERTOP. MODEL TRIMMER HAS A 1" MALE NIPPLE FOR FLEXIBLE WASTE PIPE CONNECTION. PLUMBER TO RUN WASTE LINE FROM TRIMMER TO SINK TAILPIPE/PLASTER TRAP WITH TEE INTO SINK STRAINER TAILPIECE CONNECTION. PROVIDED BY DOCTOR AND INSTALLED BY PLUMBER. (SEE DETAIL)

NITROUS OXIDE, OXYGEN AND VACUUM VALVES - STARTING FROM TANK ROOM AT 80" HEIGHT ABOVE THE FLOOR, RUN TWO SIZES OF TYPE K OR L DEGREASED COPPER TUBING TO OUTLET STATIONS IN TREATMENT ROOMS AT 12" ABOVE FLOOR. OXYGEN TUBING AT 1/2" OD AND NITROUS OXIDE TUBING AT 3/8" OD. ALL CONCEALED CONNECTIONS MUST BE SILVER SOLDERED TO INSURE A MELTING POINT OF 1000 DEGREES.

EXPOSED CONNECTIONS MAY BE FLARED. PLUMBER IS TO RUN 1/2" VACUUM LINE FROM OUTLET STATION TO NEAREST VACUUM TRUNK LINE AND TEE INTO TRUNK LINE. VACUUM LINE WILL CARRY ONLY EXHAUST N2O AND AIR, NO LIQUIDS. PLUMBER IS TO INSTALL VALVES IN TANK ROOM AND TREATMENT ROOMS. VALVES AND MANIFOLD SUPPLIED BY DOCTOR. LINES AND VALVES TO BE PRESSURE TESTED, WITH NITROGEN, AT 150 LBS. AND MAINTAINED FOR 48 HOURS WITH NO LOSS OF PRESSURE. SEE MANUFACTURER'S TEMPLATES AND SPECIFICATIONS.

VACUUM OUTLET - INCORPORATED INTO DENTAL UNIT PLUMBING AS DESIGNATED ON PLAN.

VACUUM UNIT - DRY SYSTEM -
 #1 VACUUM LINE - RUN 2" MAIN LINE IN SCHEDULE 40 PVC PIPING (80 PS MINIMUM) REDUCE AS SHOWN IN DETAIL #4 OF DETAIL SHEET. REDUCE AGAIN TO 5/8" OD COPPER BELOW AND THROUGH THE FLOOR, OR WALL, IN TREATMENT ROOM, AS INDICATED ON PLAN. AT POWER UNIT, REDUCE END OF 1" MAIN LINE TO 1" FPT FITTING. PLUMBER TO INSTALL 45'S TO AVOID 90 DEGREE ANGLES, WHERE POSSIBLE. SEE MANUFACTURER'S SPECIFICATIONS.

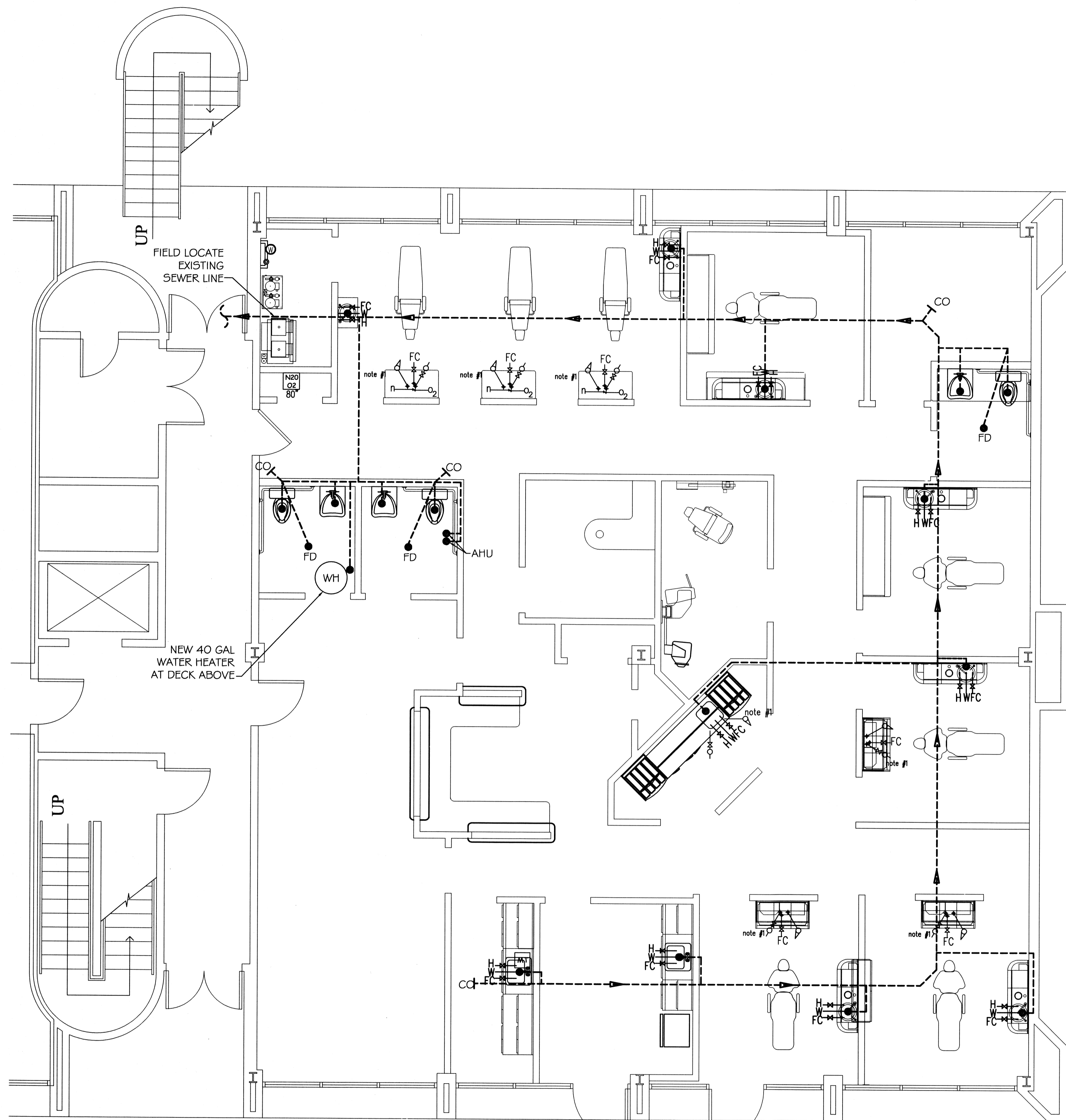
#2 DRAIN - CONNECT TO A MINIMUM 3" VENTED WASTE LINE. IF LOCAL CODE DOES NOT PERMIT, CONNECT TO FLOOR SINK OR STAND PIPE. DRAIN MUST BE LOCATED WITHIN 3" OF VACUUM POWER UNIT. SEE MANUFACTURER'S SPECIFICATIONS.

#3 EXTERNAL VENT - FOR EXHAUST AIR, WHERE REQUIRED BY MANUFACTURER'S SPECS. INSTALL COLLECTION TANK WITH CONNECTION TO EXTERNAL VENT. SEE MANUFACTURER'S SPECIFICATIONS FOR SEPARATOR INSTALLATION.

NITROUS OXIDE & OXYGEN MANIFOLD - LOCATED IN TANK ROOM AT 80" HEIGHT ABOVE THE FLOOR, RUN TWO SIZES OF TYPE K DEGREASED COPPER TUBING TO OUTLET STATIONS IN TREATMENT ROOMS AT 12" ABOVE FLOOR. OXYGEN TUBING AT 1/2" OD AND NITROUS OXIDE TUBING AT 3/8" OD. ALL CONCEALED CONNECTIONS MUST BE SILVER SOLDERED. EXPOSED CONNECTIONS MAY BE FLARED. PLUMBER IS TO INSTALL VALVES IN TANK ROOM AND TREATMENT ROOMS. VALVES AND MANIFOLD SUPPLIED BY DOCTOR. LINES AND VALVES TO BE PRESSURE TESTED, WITH NITROGEN GAS, AT 150 LBS. AND MAINTAINED FOR 48 HOURS WITH NO LOSS OF PRESSURE. SEE MANUFACTURER'S TEMPLATES AND SPECIFICATIONS.

SBD - SUPPLIED BY DOCTOR, HOWEVER, WHERE THESE ITEMS DO APPEAR, CONTRACTOR SHALL PROVIDE LABOR AND MATERIAL TO INSURE PROPER INSTALLATION.

NOTE #1 - SEE A REPRESENTATIVE OF PATTERSON DENTAL COMPANY FOR EXACT ARRANGEMENT AND LOCATION OF DENTAL UNIT REQUIREMENTS.

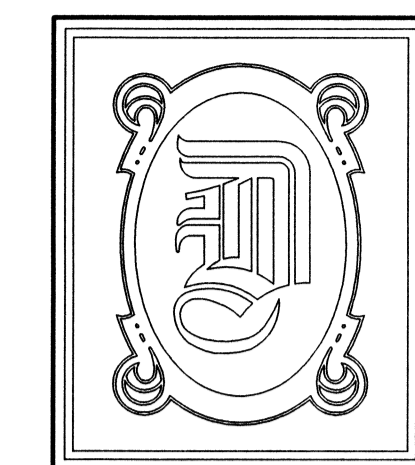


PLUMBING PLAN

SCALE: 1/4" = 1'-0"

NOTE:

SEE EQUIPMENT SUPPLIER PLANS AND DETAILS FOR DENTAL EQUIPMENT PLUMBING REQUIREMENTS.



DAMMON ENGINEERING, INC.

CHIEF ENGINEER
EMMETT DAMMON, P.E.

CHIEF ARCHITECT
ROBERT WILTSE

554 OLD SPANISH TRAIL
SLIDELL, LA. 70458
OFFICE: 985-649-5832
FAX: 985-641-5950

WEBSITE:
WWW.DAMMONENGINEERING.COM

EMAIL:
DAMMONENG@BELLSOUTH.NET

ARCHITECTURE

ENGINEERING

STUDIES

PLANNING

INVESTIGATION

EXPERT WITNESS

NEW DENTAL OFFICE

DR. JONES
7240 CROWDER BLVD.
SUITE 102
NEW ORLEANS, LA

PLUMBING PLAN

REV:

SCALE: AS NOTED

JOB#: 2130

DATE: 02-15-12

SHEET 10

P-1

OF 11