

**DAMMON**  
ENGINEERING, INC.

CHIEF ENGINEER  
EWMETT  
DAMMON, P.E.  
CHIEF ARCHITECT  
ROBERT  
WILTSE

1095 FLORIDA AVENUE  
SLIDELL, LA. 70456  
OFFICE: 985-649-5632  
FAX: 985-641-5950

WEBSITE:  
WWW.DAMMONENGINEERING.COM  
EMAIL:  
DAMMONENG@BELL.SOUTH.NET

ARCHITECTURE  
ENGINEERING  
STUDIES  
PLANNING  
INVESTIGATION  
EXPERT WITNESS

DENTISTRY

EXTERIOR  
ELEVATIONS

REV.:

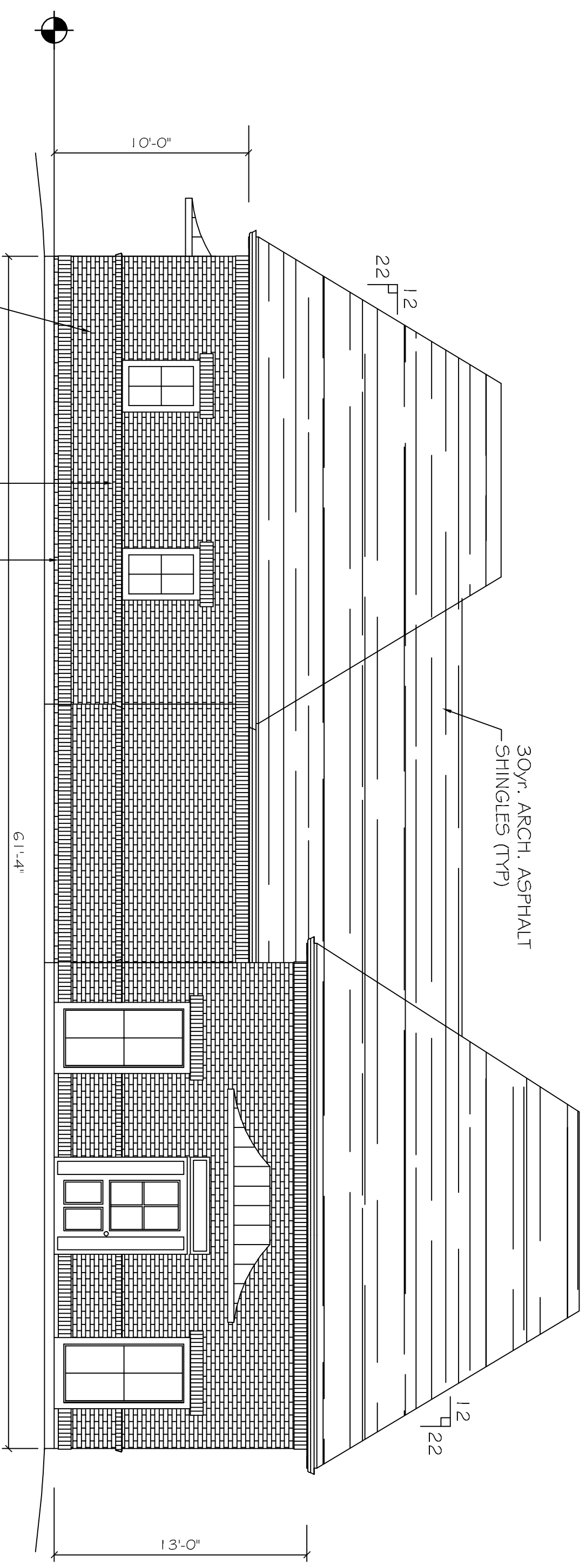
SCALE: AS NOTED

JOB#:

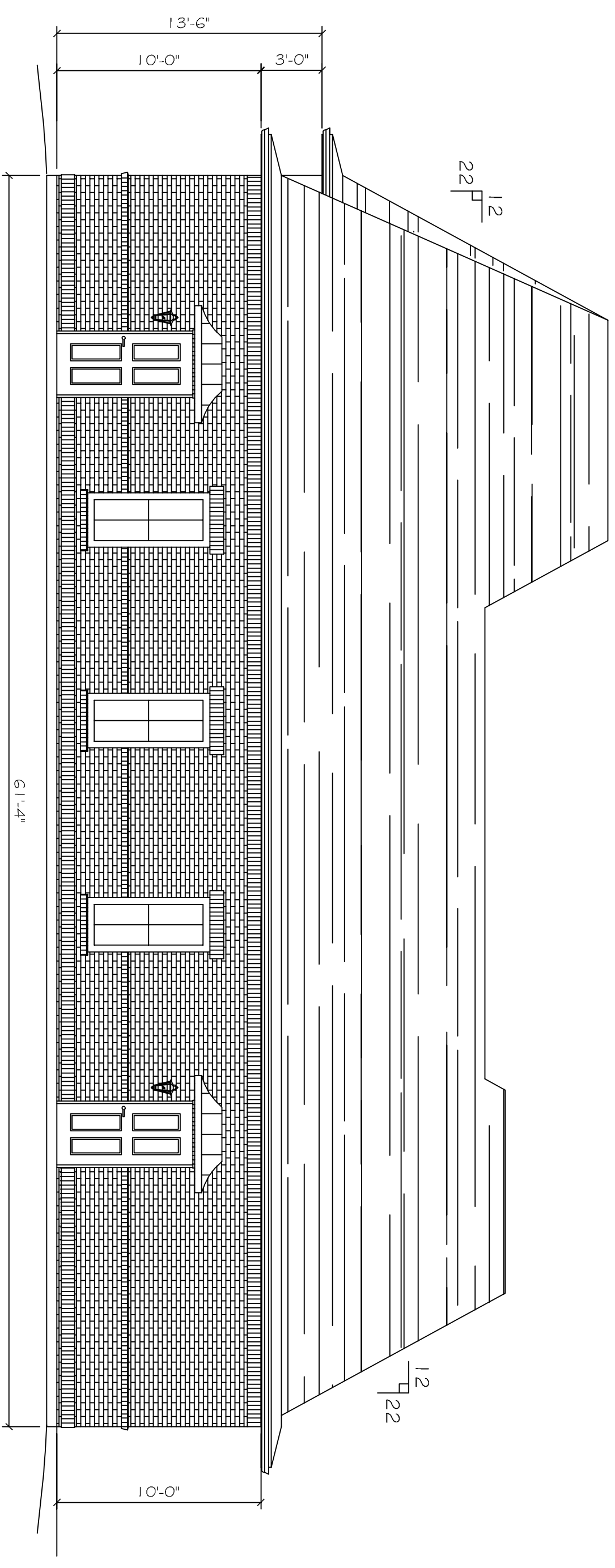
DATE: 6-15-12

SHEET

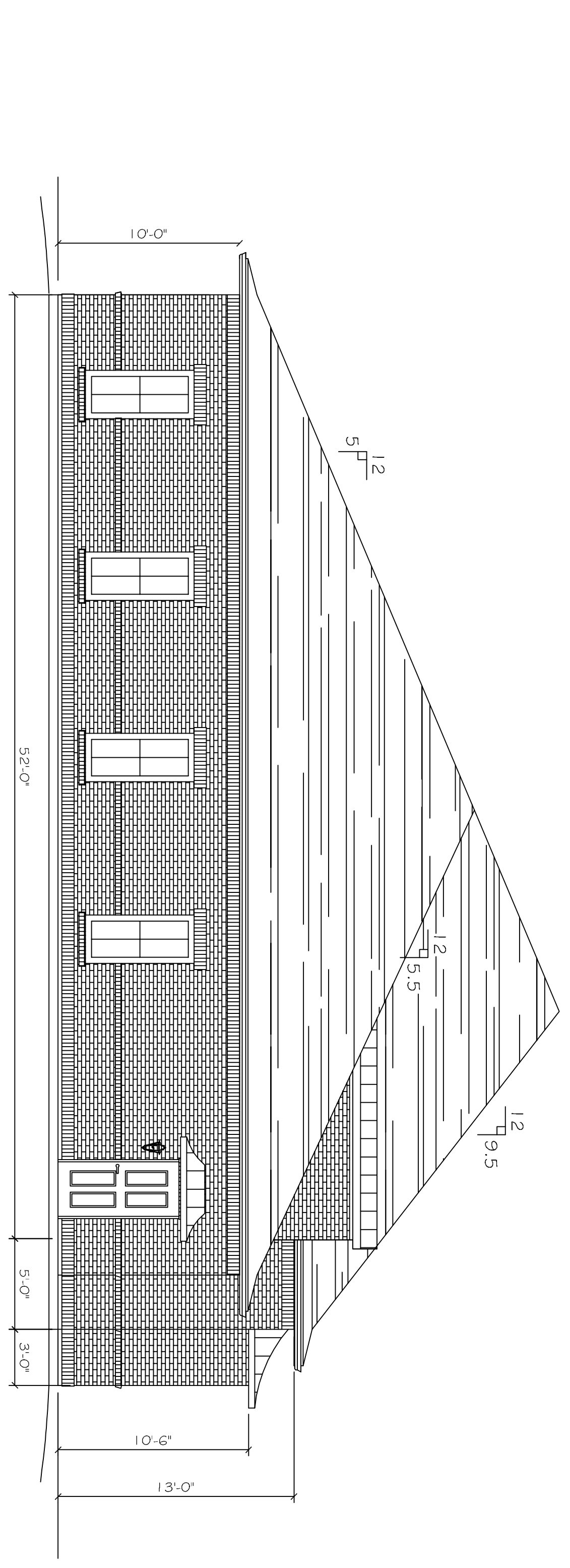
OF



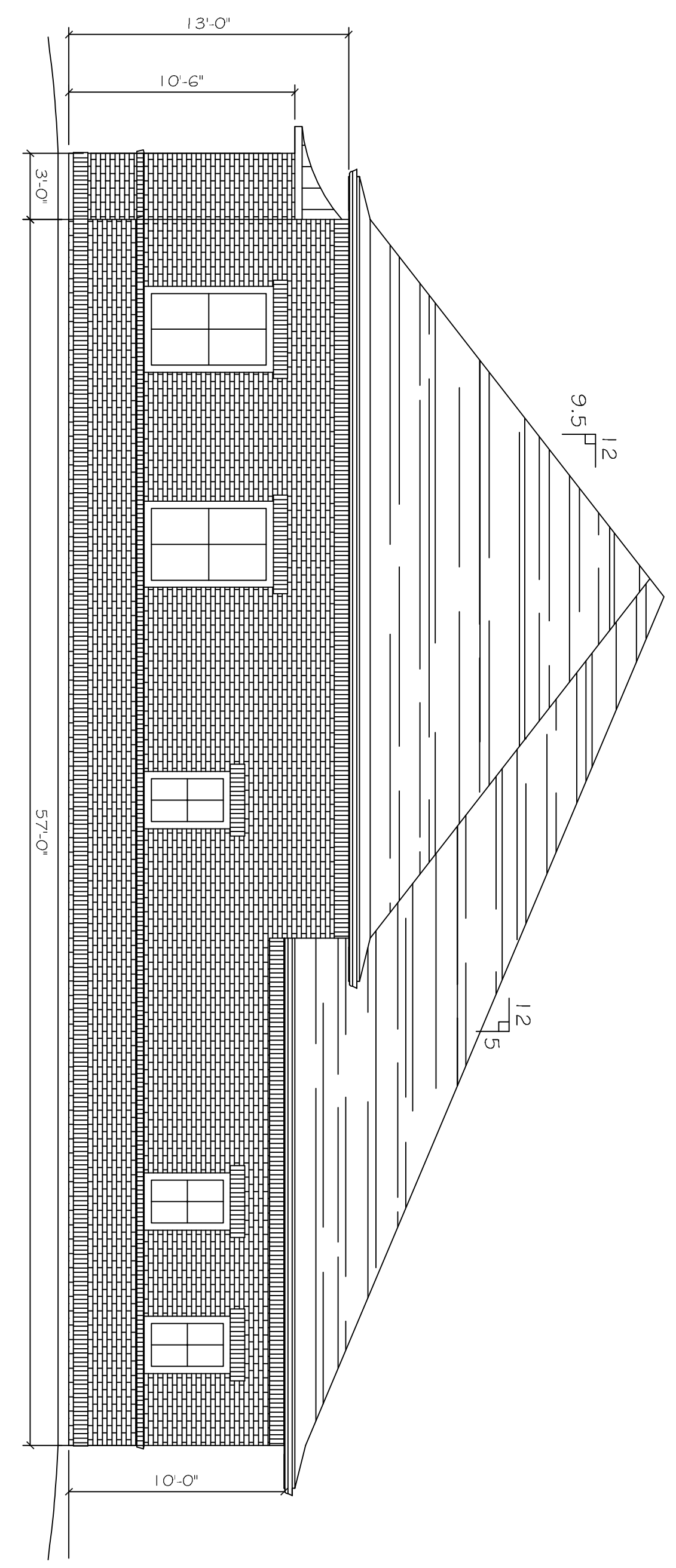
**FRONT ELEVATION**  
SCALE: 3/16"=1'



**REAR ELEVATION**  
SCALE: 3/16"=1'



**LEFT SIDE ELEVATION**  
SCALE: 3/16"=1'



**RIGHT SIDE ELEVATION**  
SCALE: 3/16"=1'