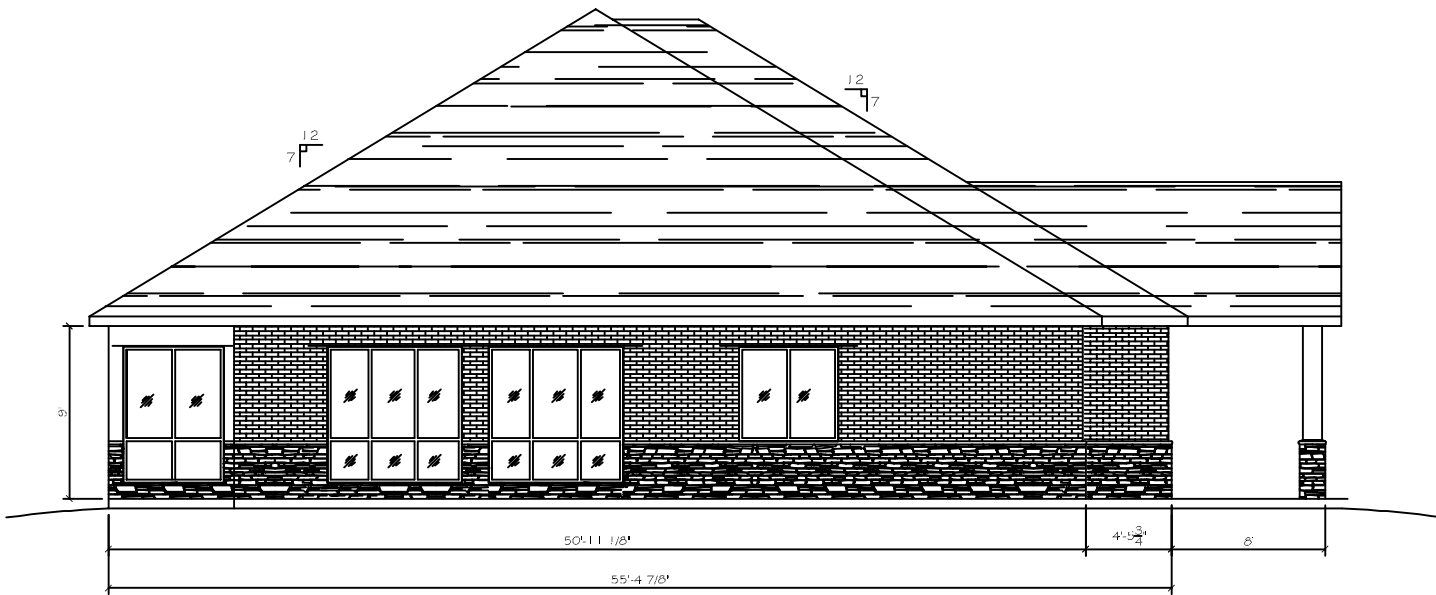


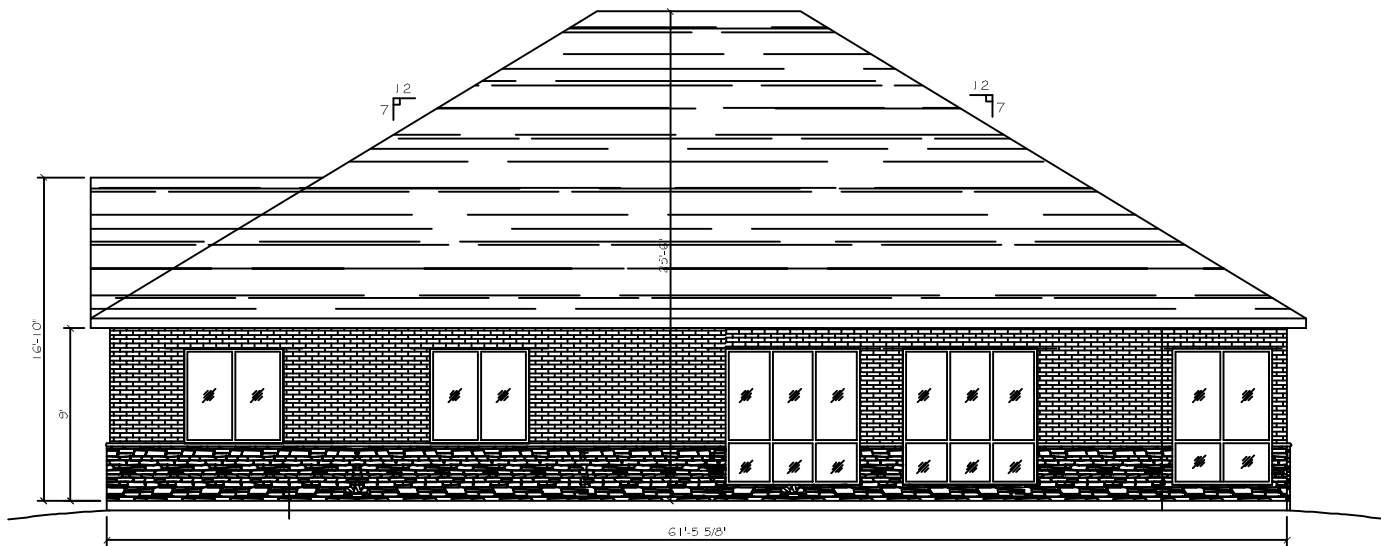
EAST SIDE ELEVATION

SCALE: 1/4" = 1'-0"



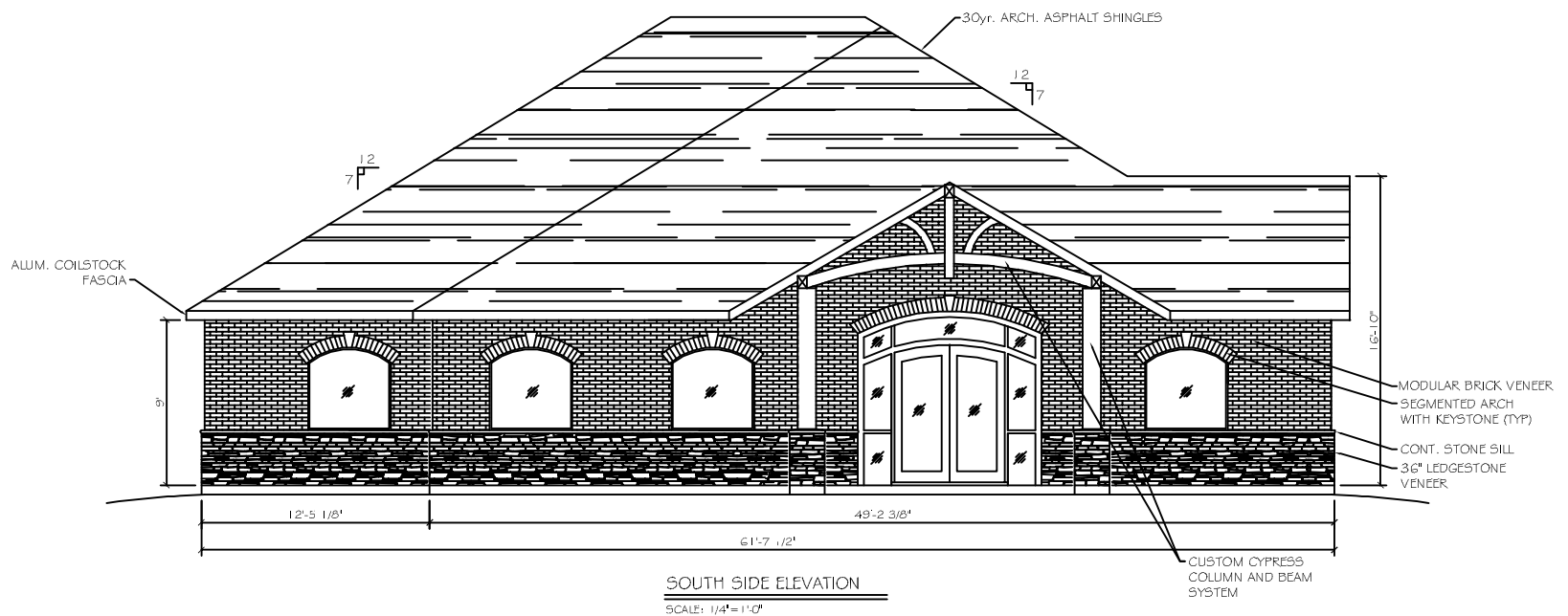
WEST SIDE ELEVATION

SCALE: 1/4" = 1'-0"



NORTH SIDE ELEVATION

SCALE: 1/4" = 1'-0"



SOUTH SIDE ELEVATION

SCALE: 1/4" = 1'-0"