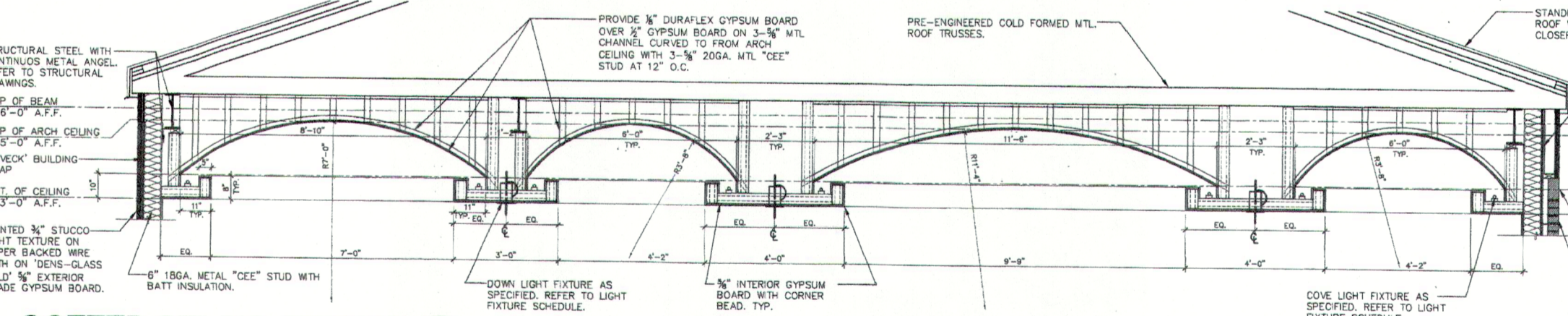
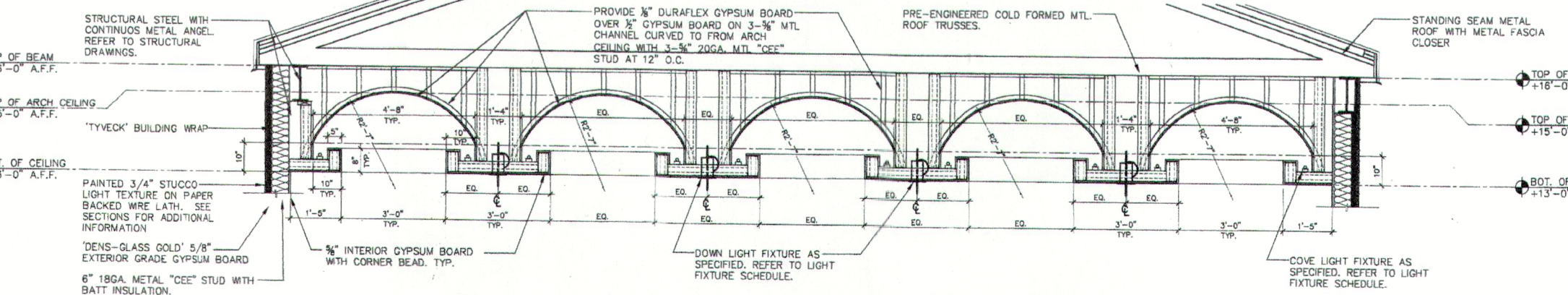


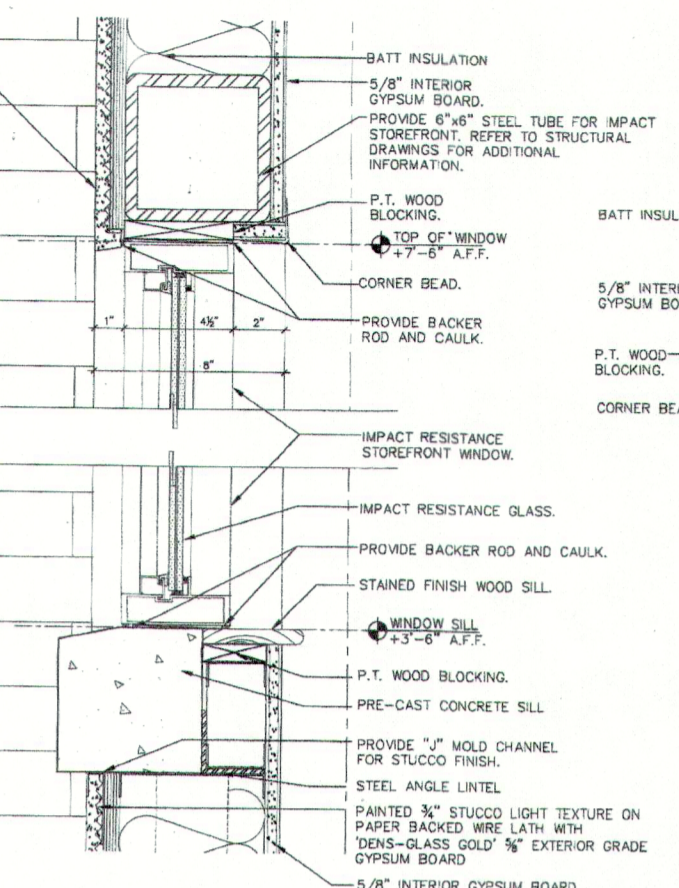
**STOREFRONT DETAIL 1**  
SCALE: 3/4"=1'-0" A-8.01



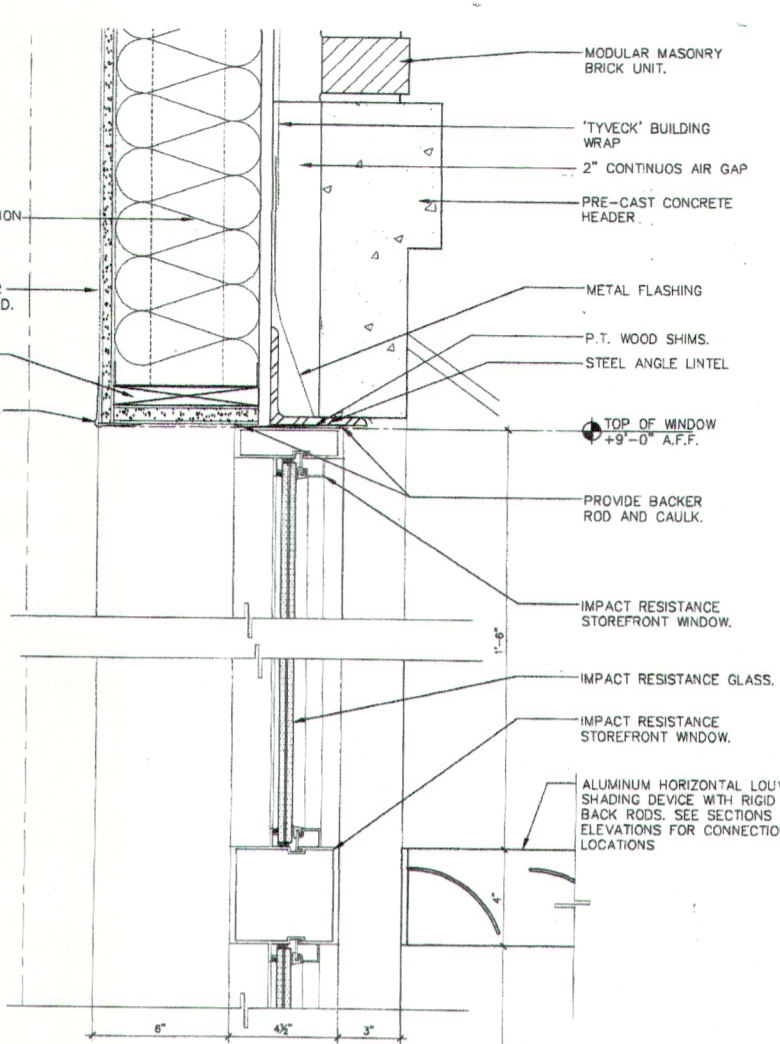
**COFFERED CEILING SECTION 6**  
SCALE: 3/4"=1'-0" A-8.01



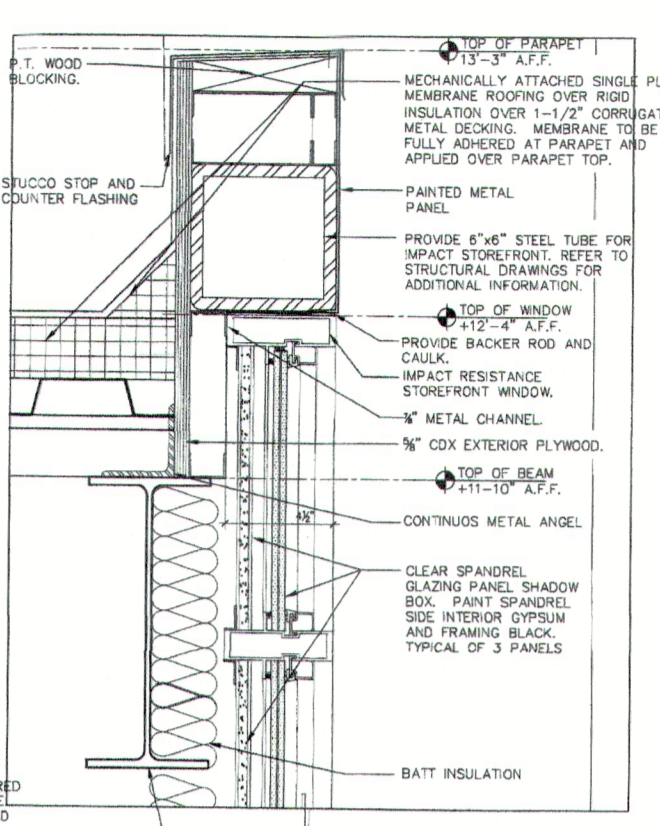
**COFFERED CEILING SECTION 7**  
SCALE: 3/4"=1'-0" A-8.01



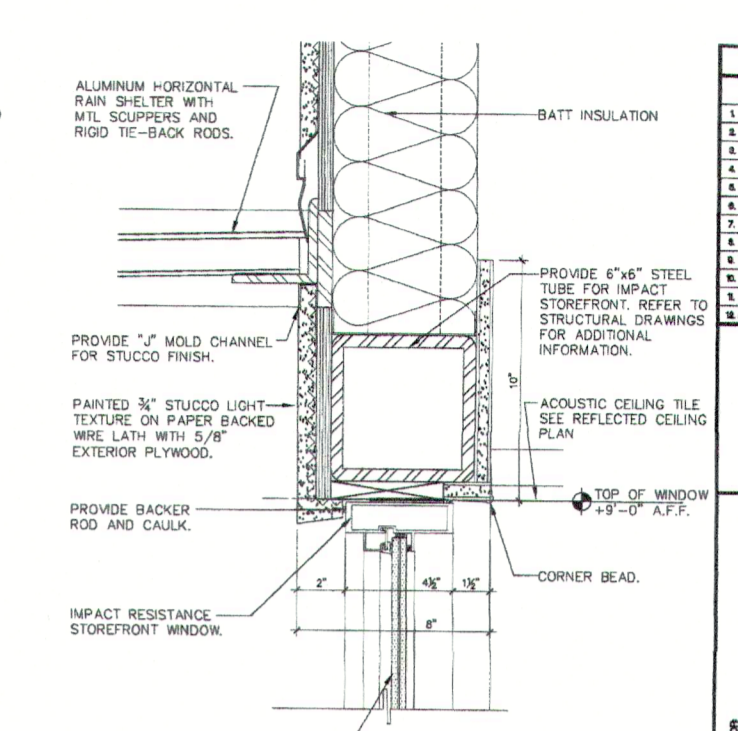
**STOREFRONT DETAIL 2**  
SCALE: 3/4"=1'-0" A-8.01



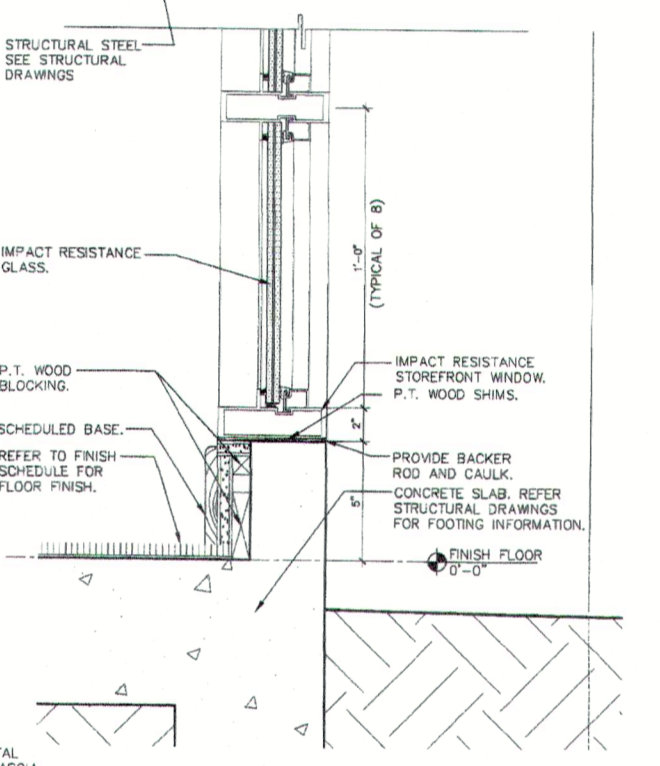
**STOREFRONT DETAIL 3**  
SCALE: 3/4"=1'-0" A-8.01



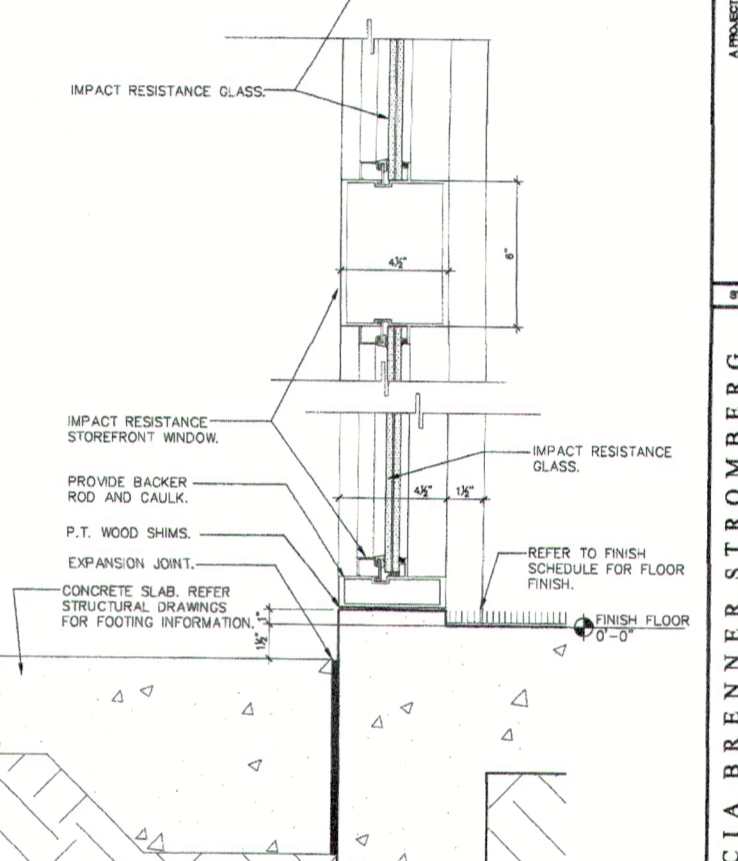
**STOREFRONT DETAIL 4**  
SCALE: 1-1/2"=1'-0" A-8.01



**STOREFRONT DETAIL 5**  
SCALE: 1-1/2"=1'-0" A-8.01



**COLUMN DETAIL 8**  
SCALE: 1-1/2"=1'-0" A-8.01



**COLUMN DETAIL 9**  
SCALE: 1-1/2"=1'-0" A-8.01

**PROGRESS SET**

**BID SET**

NOTE: G.C. TO PROVIDE MANUFACTURER, SHOP DRAWINGS AND PRODUCT APPROVALS FOR ALL IMPACT RESISTANCE STOREFRONT SYSTEMS, WINDOWS AND GLASS/ALUMINUM DOORS. G.C. TO FINISH SAMPLE OF STOREFRONT SYSTEM AND SHOP DRAWINGS TO BE APPROVED BY ARCHITECT.

**SATNOH, LLC**  
180 W. RUELE  
MANDEVILLE, LA 70471

**GARCIA BRENNER STROMBERG ARCHITECTURE**  
Page: T. Stromberg, AIA, LEED AP  
Shawn M. Brennan, AIA, LEED AP  
1001 St. Marys Cemetery Road, Suite 118  
Tulane University, New Orleans, LA 70112  
Tel: 504.581.4274 Fax: 504.241.8248  
www.gbarch.com

**TULANE / HONTAS MEDICAL CENTER**

**A-8.01**