

ELECTRICAL SYMBOLS LEGEND

NOTE: THESE ARE STANDARD SYMBOLS AND ALL MAY NOT APPEAR ON THE PROJECT DRAWINGS. REFER TO SPECIFICATIONS FOR MOUNTING HEIGHTS.

LIGHTING

- NOTE:
(RM) DENOTES FIXTURE WITH REMOTE BALLAST
- FLOURESCENT FIXTURE - CEILING MOUNTED
 - FLOURESCENT FIXTURE - CEILING MOUNTED, EMERGENCY POWER
 - FLOURESCENT STRIP FIXTURE
 - FLOURESCENT STRIP FIXTURE - EMERGENCY POWER
 - FLOURESCENT FIXTURE - WALL MOUNTED
 - FLOURESCENT OR INCANDESCENT FIXTURE - RECESSED
 - FLOURESCENT OR INCANDESCENT WALL WASH FIXTURE - RECESSED
 - FLOURESCENT OR INCANDESCENT FIXTURE - RECESSED, EMERGENCY POWER
 - FLOURESCENT OR INCANDESCENT FIXTURE - SURFACE/PENDANT MOUNTED
 - FLOURESCENT OR INCANDESCENT FIXTURE - SURFACE/PENDANT, EMERGENCY
 - FLOURESCENT OR INCANDESCENT FIXTURE - WALL MOUNTED
 - FLOURESCENT OR INCANDESCENT FIXTURE - WALL MOUNTED, EMERGENCY POWER
 - TRACK LIGHTING
 - UNIVERSAL MOUNTING END LIGHTS, SINGLE AND DOUBLE FACED, ARROWS AS SHOWN ON FLOOR PLANS
 - EMERGENCY BATTERY PACK, HEADS AS INDICATED

SWITCHES

- Sub LOWER CASE SUBSCRIPTS INDICATE OUTLET CONTROLLED
- S SINGLE POLE SWITCH (UNLESS NOTED BY SUBSCRIPT)
 - 2 DOUBLE POLE SWITCH
 - (1) WAY
 - (2) WAY
 - (3) WAY
 - (4) WAY
 - (5) DIMMER SWITCH (1500W UNLESS NOTED)
 - (6) EMERGENCY SWITCH
 - (7) KEY OPERATED
 - (8) PULL LIGHT INDICATOR
 - (9) SINGLE PHASE MOTOR STARTING SWITCH
 - (10) EXPLOSION PROOF
 - (11) OCCUPANCY SENSOR
 - (12) WEATHER PROOF

CONDUIT AND WIRE

- CONDUIT CONCEALED IN WALLS OR ABOVE CEILING
- CONDUIT CONCEALED UNDERGROUND OR IN SLAB
- CONDUIT HOLLOW IN - CONDUCTORS ARE #12 AWG CU UNLESS OTHERWISE INDICATED. (SEE SPECIFICATIONS FOR BENDING OF CONDUCTORS BASED ON CIRCUIT LENGTH AND CONDUCTORS IN A CONDUIT)
- CONDUIT EXPOSED ON WALLS OR CEILING
- EXISTING CONDUIT
- CONDUIT TURNED UP OR DOWN IN WALL
- UTILITY COMPANY CONDUIT
- POWER CONDUIT
- BUSWAY - FEEDER TYPE (UNLESS NOTED)

RECEPTACLES

- DUPLEX RECEPTACLE
- (C) DUPLEX GFCI RECEPTACLE
- (V) DUPLEX ISOLATED GROUND RECEPTACLE
- (W) ELECTRIC WATER COOLER, COORDINATE LOCATION WITH PLUMBING INSTALLER. LOCATE GFCI RECEPTACLE CENTERED UP UNDER COOLER.
- (WPG) DUPLEX GFCI RECEPTACLE, WEATHERPROOF COVER
- DUPLEX RECEPTACLE MOUNT 4" ABOVE COUNTER OR BACKSPLASH, MAXIMUM 48" TO CENTER.
- QUADRUPLX RECEPTACLE IN TWO GANG BOX COVER.
- DUPLEX RECEPTACLE IN FLOOR BOX.
- QUADRUPLX RECEPTACLE MOUNT 4" ABOVE COUNTER OR BACKSPLASH, MAXIMUM 48" TO CENTER.
- DUPLEX RECEPTACLE TOP HALF SWITCHED
- DUPLEX RECEPTACLE FLUSH MOUNTED IN CEILING
- DUPLEX RECEPTACLE FLUSH MOUNTED IN CEILING HALF SWITCHED
- DUPLEX RECEPTACLE
- SIMPLEX RECEPTACLE FLUSH MOUNTED IN CEILING
- (C) ELECTRICAL CONNECTION FOR HVAC EQUIPMENT MOUNTED ABOVE CEILING
- (W) ELECTRICAL CONNECTION FOR HVAC EQUIPMENT MOUNTED ABOVE CEILING
- (V) ELECTRICAL CONNECTION FOR HVAC EQUIPMENT MOUNTED ABOVE CEILING

COMBINATION DATA/TELEPHONE AND DUPLEX RECEPTACLE MOUNTED IN CEILING

- SPECIAL OUTLET, SUBSCRIPT INDICATES NEMA CONFIGURATION NUMBER
- CLOCK OUTLET, MOUNT 6"-0" OR 1'-0" BELOW CEILING WHEN CEILING IS LESS THAN 8'-0"
- SURFACE RACKWAY, PROVIDE W/RECORD G-3000 SERIES UNLESS OTHERWISE NOTED. RECEPTACLES SHALL BE 24" ON CENTER WITH MULTIPLE CIRCUITS, SO AS NO CONSECUTIVE RECEPTACLES ARE ON THE SAME BRANCH CIRCUIT.

SITE

- POWER COMPANY TRANSFORMER - UNLESS NOTED
- PARKING LOT OR ROADWAY HD FIXTURE - NORMAL POWER
- PARKING LOT OR ROADWAY HD FIXTURE - EMERGENCY POWER (VERIFY BRANCH OF ESSENTIAL ELECTRICAL SYSTEM WITH DRAWINGS)
- WALKWAY BOLLARD
- FLOODLIGHT
- POLE
- GENERATOR - SEE RISER DIAGRAM

POWER CONNECTIONS

- JUNCTION BOX SIZED PER N.E.C. UNLESS NOTED
- (C) ELECTRICAL CONNECTION FOR HVAC EQUIPMENT MOUNTED ABOVE CEILING
- (W) ELECTRICAL CONNECTION FOR HVAC EQUIPMENT MOUNTED ABOVE CEILING
- (V) ELECTRICAL CONNECTION FOR HVAC EQUIPMENT MOUNTED ABOVE CEILING
- FLOOR JUNCTION BOX
- POWER POLE, SEE DETAIL FOR REQUIREMENTS.
- WALL MOUNTED PUSH BUTTON STATION MOUNT AT 7'-0" AFF FOR OUTDOOR INSTALLATIONS AND 4'-0" AFF FOR INDOOR INSTALLATIONS.
- WALL MOUNTED SHUNT TRIP STATION MOUNT AT 7'-0" AFF FOR OUTDOOR INSTALLATIONS AND 4'-0" AFF FOR INDOOR INSTALLATIONS.
- DOOR BELL
- TIME CLOCK
- WALL MOUNTED EMERGENCY POWER OFF STATION MOUNT AT 7'-0" AFF FOR OUTDOOR INSTALLATIONS AND 4'-0" AFF FOR INDOOR INSTALLATIONS.
- PHOTO-ELECTRIC CELL
- ELECTRIC WATER HEATER
- INSTANTANEOUS WATER HEATER
- MOTOR CONNECTION, MARK NUMBER WILL IDENTIFY EQUIPMENT, ET, AWL, CU, ETC. - SEE MOTOR CONNECTION SCHEDULE.
- NON FUSIBLE HEAVY DUTY SAFETY SWITCH, SIZE AND NUMBER OF POLES ARE INDICATED.
- FUSIBLE HEAVY DUTY SAFETY SWITCH, SIZE AND NUMBER OF POLES ARE INDICATED.
- ENCLOSURE NEMA RATING
- DISCONNECT SIZE #POLES
- FUSE SIZE
- MAGNETIC STARTER
- (VF) PROVIDE WITH VARIABLE FREQUENCY DRIVE CONTROLLER COMPATIBLE WITH VARIABLE FREQUENCY DRIVE.
- COMBINATION MAGNETIC STARTER WITH A CIRCUIT BREAKER
- (VF) PROVIDE WITH VARIABLE FREQUENCY DRIVE CONTROLLER COMPATIBLE WITH VARIABLE FREQUENCY DRIVE.
- COMBINATION MAGNETIC STARTER WITH FUSIBLE HEAVY DUTY SAFETY SWITCH
- (VF) PROVIDE WITH VARIABLE FREQUENCY DRIVE CONTROLLER COMPATIBLE WITH VARIABLE FREQUENCY DRIVE.
- ENCLOSED CIRCUIT BREAKER
- ATS
- AUTOMATIC TRANSFER SWITCH - SEE RISER DIAGRAM
- PANELBOARD, LOW VOLTAGE (120/208V) - SEE PANELBOARD SCHEDULES AND RISER DIAGRAM
- PANELBOARD, HIGH VOLTAGE (277/480V) - SEE PANELBOARD SCHEDULES AND RISER DIAGRAM
- DISTRIBUTION PANEL, SEE RISER DIAGRAM
- POWER COMPANY METERING
- DRY-TYPE TRANSFORMER, SEE RISER FOR CHARACTERISTICS.

TELEPHONE SYSTEM

- TELEPHONE OUTLET
- (C) TELEPHONE OUTLET, BOTTOM IS AT 4" ABOVE COUNTER OR BACKSPLASH, MAXIMUM 48" TO CENTER.
- (W) WALL TELEPHONE OUTLET, MOUNT 48" AFF UNLESS NOTED OTHERWISE
- (P) COIN OPERATED PAY TELEPHONE OUTLET, MOUNT AT 48" AFF UNLESS OTHERWISE DIRECTED.
- TELEPHONE OUTLET IN FLOOR BOX
- TELEPHONE OR POWER HANDHOLE
- TELEPHONE SYSTEM RACKWAY/CABLE
- TELEPHONE TERMINAL BOARD

TELEVISION SYSTEM

- TELEVISION OUTLET
- (C) TELEPHONE OUTLET, BOTTOM IS AT 4" ABOVE COUNTER OR BACKSPLASH, MAXIMUM 48" TO CENTER.
- VIDEO PROJECTOR
- PLASMA SCREEN
- TELEVISION EQUIPMENT CABINET

FIRE ALARM SYSTEM

- BEAM DETECTOR, RECEIVER
- BEAM DETECTOR, TRANSMITTER
- THERMAL DETECTOR, FIXED + RATE-OF-RISE
- THERMAL DETECTOR, FIXED TEMP.
- SMOKE DETECTOR - IONIZATION
- FLAME DETECTOR - INFERRED
- SMOKE DETECTOR - NON-SYSTEM, 120V (PROVIDE WITH BATTERY BACK-UP)
- SMOKE DETECTOR - PHOTO
- FLAME DETECTOR - UV
- MANUAL STATION
- MAGNETIC DOOR RELEASE
- CONTROL ELEMENT
- FLOW SWITCH (FIRE SPRINKLER)
- HAND BOX, MOUNTED AT 7'-0" AFF OR @ HEIGHT INDICATED ON FLOOR PLAN
- TAMPER SWITCH (VALVE SUPERVISION)
- CONTROL RELAY
- REMOTE TEST INDICATOR
- DOOR HOLDER/CLOSER WITH INTEGRAL SMOKE DETECTOR
- ZONE INTERFACE DEVICE

ABBREVIATIONS

- A AMPERES
- AFS ABOVE FINISHED FLOOR
- AFS ABOVE FINISHED GRADE
- AL ALUMINUM
- ANR ANTI-RADIATION
- ARCH ARCHITECT
- ATS AUTOMATIC TRANSFER SWITCH
- AWG AMERICAN WIRE GAUGE
- BFG BELOW FINISHED GRADE
- BLDG BUILDING
- C CONDUIT
- CAT CATALOG
- CHT CIRCUIT
- CU COPPER
- C/B CIRCUIT BREAKER
- C/T CURRENT TRANSFORMERS
- Δ DELTA
- DWG DRAWING
- FT FEET
- G GROUND
- GEN GENERATOR
- GI GROUND FAULT INTERRUPT
- IG ISOLATED GROUND
- KVA KILOWATT - AMPERES
- KW KILOWATTS
- MCR MAIN CIRCUIT BREAKER
- MCC MOTOR CONTROL CENTER
- MCM THOUSAND CIRCULAR MILS
- MISC MISCELLANEOUS
- MLO MAIN LOSS ONLY
- NEC NATIONAL ELECTRICAL CODE
- NC NORMALLY CLOSED
- NL NIGHT LIGHT CIRCUIT
- NO NORMALLY OPEN
- NOT TO SCALE
- NTS NOT IN CONTRACT
- # PHASE
- POS POINT OF SALE
- PVC POLYVINYL CHLORIDE
- P/T POTENTIAL TRANSFORMER
- R RECESSED
- SIR SHORT CIRCUIT RATING SURFACE
- TEL TELEPHONE
- LV UNDERGROUND
- UNIV UNIVERSAL
- UNL UNLESS NOTED OTHERWISE
- V VOLTS
- W WATTS
- WP WEATHERPROOF
- WPG WEATHERPROOF WITH GROUND FAULT INTERRUPT
- XFORM TRANSFORMER
- Y WYE

DATA DISTRIBUTION

- DATA OUTLET, FLUSH WALL MTD, 18" AFF UNLESS NOTED OTHERWISE
- (B) PROVIDE COVERPLATE WITH NUMBER OF PORTS AS SHOWN.
- (C) MOUNT 4" ABOVE COUNTER OR BACKSPLASH
- (S) SURFACE WALL MOUNTED 18" AFF
- (R) RECESSED WALL MOUNTED 48" AFF
- (LAN) LOCAL AREA NETWORK OUTLET
- (POS) POS DATA OUTLET
- DATA OUTLET, FLUSH IN FLOOR BOX
- COMBINATION DATA/TELEPHONE OUTLET, FLUSH WALL MTD, 18" AFF UNLESS NOTED OTHERWISE
- (B) PROVIDE COVERPLATE WITH NUMBER OF PORTS AS SHOWN.
- (C) MOUNT 4" ABOVE COUNTER OR BACKSPLASH
- (S) SURFACE WALL MOUNTED 18" AFF
- (R) RECESSED WALL MOUNTED 48" AFF
- COMBINATION DATA/TELEPHONE OUTLET, FLUSH IN FLOOR BOX
- DATA SYSTEM RACKWAY/CABLE
- DATA TERMINAL CABINET
- DATA EQUIPMENT CABINET
- INTERMEDIATE DATA FRAME
- MAIN DATA FRAME

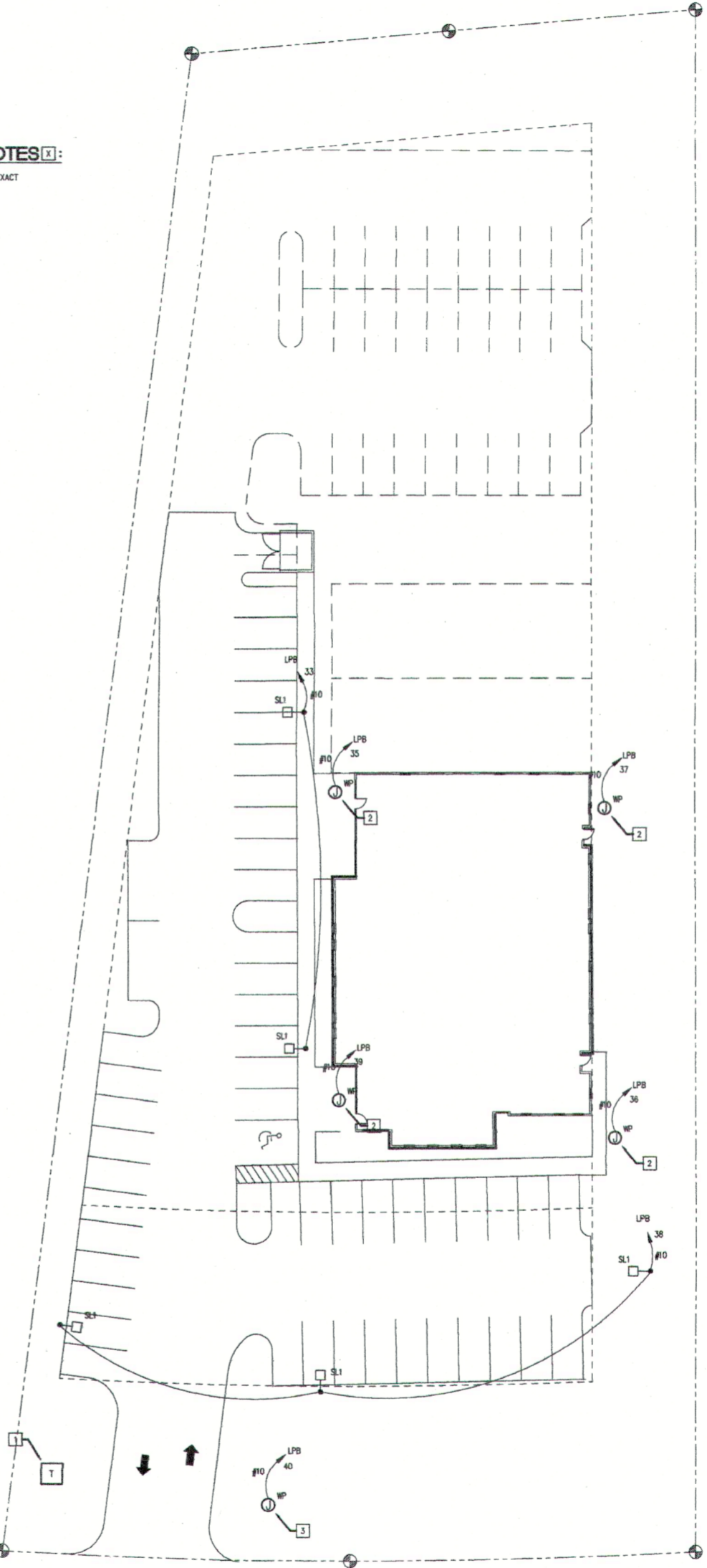
FIXTURE SCHEDULE

TYPE	DESCRIPTION	TOTAL WATTS	NO.	LAMPS	VOLTAGE	MOUNTING	NOTES
A	2' x 2' FLOURESCENT TROFFER WITH PRISMATIC LENS DAY-BRITE	76	4	17	78	120	RECESSED
B	2' x 4' FLOURESCENT TROFFER WITH PRISMATIC LENS DAY-BRITE	106	3	32	78	120	RECESSED
C	4" APERTURE INCANDESCENT RECESSED DOWNLIGHT WITH CLEAR ALZAK DOME CAPS (RM) (MOUNTING AND DIMMABLE) (TRM)	90	1	90	PAR38	120	RECESSED
D	1' x 4' FLOURESCENT WRAPAROUND DAY-BRITE	70	2	32	78	120	SURFACE
E	3' STRIP FLOURESCENT DAY-BRITE	55	2	25	78	120	SURFACE
F	GARDOOD 103M1-(1)209F120MP (CHROOM ROOMS) WITH FILTERS AS REQUIRED BY OWNER	29	1	28	OPL	120	SURFACE (1)
G	COLE #1810-218 SERIES	55	2	25	78	120	RECESSED
H	WALL MOUNTED "DARKROOM IN USE" SAFETIES #132-114 SERIES	29	1	28	OPL	120	SURFACE WALL (1)
J	4" SMALL CROSS SECTION FLOURESCENT STRIP WITH ASYMETRICAL REFLECTOR #122-120 WITH HAS-3 REFLECTOR	35	1	32	78	120	SURFACE
K	4" SMALL CROSS SECTION FLOURESCENT STRIP WITH ASYMETRICAL REFLECTOR #122-120 WITH HAS-3 REFLECTOR	28	1	25	78	120	SURFACE
L	WALL MOUNTED "7-RAY IN USE" SAFETIES #132-114 SERIES	29	1	28	OPL	120	SURFACE WALL (1)
SL1	GARDOOD #1810-218 SERIES (PROVIDE 2" SQUARE STEEL POLE WITH MOUNTING HARDWARE)	400	1	400	MH	120	POLE
X	THERMOPLASTIC EXIT SIGN MOPHLEEN COL-3-8-8	-	-	-	-	120	UNIVERSAL (2)
XA	THERMOPLASTIC EMERGENCY LIGHT MOPHLEEN	-	-	-	-	120	UNIVERSAL (2)

- NOTES:
1. VERIFY MOUNTING HEIGHT WITH ARCHITECT PRIOR TO ROUND-UP.
2. CONNECT AHEAD OF ALL SWITCHING.

ELECTRICAL KEYNOTES

1. NEW 208/200V TRANSFORMER, VERIFY EXACT LOCATION WITH LOCAL UTILITY.
2. CONNECTION TO SITE LIGHTING, PROVIDE WEATHERPROOF JUNCTION BOX.
3. CONNECTION TO SIGN LIGHTING, PROVIDE WEATHERPROOF JUNCTION BOX.



PROGRESS SET

SITE PLAN - ELECTRICAL
SCALE: 1" = 20'-0"
NORTH

BID SET

'NOT FOR CONSTRUCTION'
PROGRESS

CONSULTING ENGINEERS
ORLANDO • FT. PIERCE • W. PALM BEACH
407 332-2110 FAX 407 332-7074
3200 WINDHURST DRIVE, SUITE 410, WINDHURST, FLORIDA 32073
407 486-1180 FAX 407 486-1184
3800 193RD HWY. SUITE 202, WEST PALM BEACH, FLORIDA 33411
407 933-8800 FAX 407 434-7160

GARCIA BRENNER STROMBERG
ARCHITECTS

SATNOH, LLC
130 W. RUELLE
MANDEVILLE, LA 70471

TULANE / HONTAS
MEDICAL CENTER

E-1.01

DATE: 10-11-01
DESIGN BY:
DRAWN BY:
REVIEWED BY:
PROJECT # 21409
SHEET #

DEC 23 2002