

TOILET PARTITION & ACCESSORIES
BASED ON BRADLEY OR APPROVED EQUAL

PAPER TOWEL DISPENSER/ WASTE RECEPTACLE:
BRADLEY MODEL NO. B-262. 1 EACH TOILET ROOM.

TOILET TISSUE DISPENSER:
BRADLEY NO. 523 NON-CONTROLLED DUAL ROLL. ONE (1) EACH TOILET STALL.

SOAP DISPENSER:
BRADLEY MODEL NO. B-112 - WALL MOUNTED SOAP DISPENSER. ONE (1) EACH LAVATORY.

GRAB BARS:
BRADLEY NO. 812 - 1 1/2" O WITH SAFETY GRIP FINISH. ONE (1) 42" LONG EACH HANDICAP TOILET STALL AND ONE (1) 36" LONG EACH HANDICAP TOILET STALL PER DRAWINGS. GRAB BARS SHALL BE CONCEALED MOUNTING TYPE BOTH BAR CONFIGURATION SHALL BE TYPE "001".

PLUMBING SCHEDULE

L - 1 LAVATORY:
WALL MOUNTED PORCELAIN LAVATORY WITH WING HANDLES. PROVIDE WITH PIPE AND DRAIN INSULATION.

WC - 1 WATER CLOSET: (HANDICAPPED WATER CLOSET):
LOW CONSUMPTION TANK TYPE PRESSURE ASSISTED WATER CLOSET. HANDICAPPED WITH MINIMUM 17 - 1/2" HIGH ELONGATED 1.5 GPF.

WH - 1 WATER HEATER:
60 GALLON ELECTRIC WATER HEATER WITH TWO 4,500 WATT NON-SIMULTANEOUS ELECTRIC ELEMENTS, INSULATED AND JACKETED GLASS LINED STEEL WITH EXPANSION TANK AND CIRCULATING PUMP.

FD-1 FLOOR DRAIN:
2" DIAMETER FLOOR DRAIN WITH 1/2" TRAP PRIMER.

S-1 SINK: STERILIZATION ROOM:
SINGLE BOWL STAINLESS STEEL HEAVY DUTY SINK RIMMED WITH HOT AND COLD WATER. PROVIDE WITH LEVER HANDLES AND ANGLE VALVES.

S-2 SINK: LAB:
SINGLE BOWL STAINLESS STEEL HEAVY DUTY RIMMED STAINLESS STEEL SINK WITH HOT AND COLD WATER. PROVIDE WITH LEVER HANDLES AND ANGLE VALVES. UNIT PROVIDED WITH PLASTER TRAP. REFER TO DENTAL EQUIPMENT DRAWINGS.

S-3 SINK: TREATMENT ROOMS:
ROUND SINGLE BOWL RIMMED STAINLESS STEEL TREATMENT ROOM SINK WITH HOT AND COLD WATER. PROVIDE WITH LEVER HANDLES AND ANGLE VALVES.

S-4 SINK: BREAKROOM:
SINGLE BOWL STAINLESS STEEL RIM TYPE SINK WITH LEVER HOT & COLD WATER HARDWARE AND ANGLE VALVES.

EDF DRINKING FOUNTAIN:
ELECTRIC UNIT MOUNTED ADA DUAL BOWL DRINKING FOUNTAIN. EQUAL TO HALSEY TAYLOR OR ELKAY REFRIGERATED BI-LEVEL BARRIER FREE COOLER.

SHW-1 SHOWER:
ACRYLIC 36" X 42" SHOWER TRANSFER TYPE WITH STAINLESS STEEL GRAB BARS AND SHOWER HAND HANDSET.

MISCELLANEOUS PLUMBING ITEMS

A. VB - 1, VACUUM BREAKER: INSTALL VACUUMS BREAKER ON COLD WATER INLET TO WATER HEATER UNIT SHALL BE EQUAL TO WATTS 36 A.

B. WHA, WATER HAMMER ARRESTORS: STAINLESS STEEL, BELLOWS / COMPRESSION CHAMBER TYPE, PRE - CHARGED AND PERMANENTLY SEALED AT THE FACTORY. EQUAL TO SMITH'S HYDROTOL # 5005.

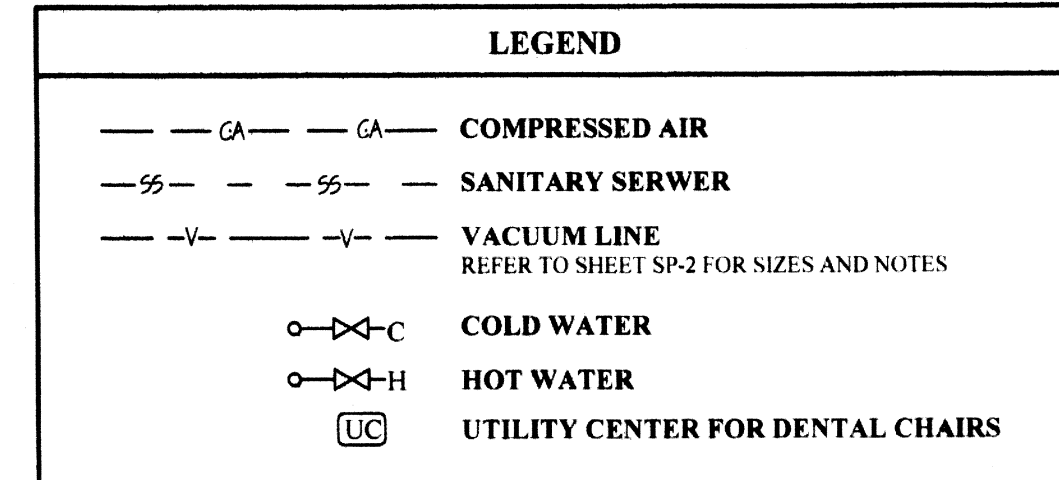
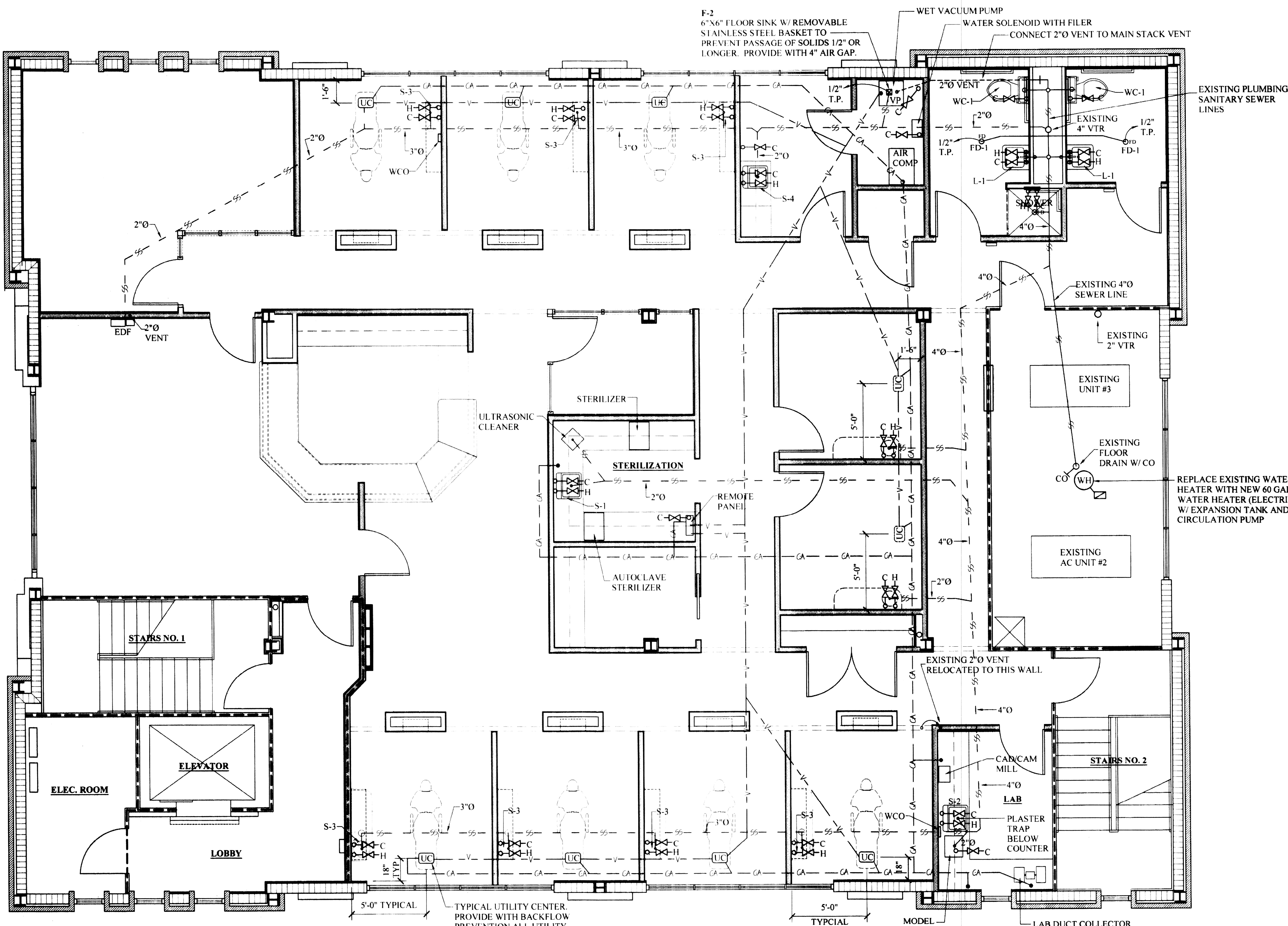
C. INTERIOR FINISHED FLOOR CLEANOUT: SERIES 58660 BY JOSAM OR EQUAL. LACQUERED CAST IRON, TWO PIECE BODY WITH DOUBLE DRAINAGE FLANGE, WEEP HOLES, REVERSIBLE CLAMPING COLLAR AND ADJUSTABLE NICKEL, BRONZE STRAINER, ROUND WITH SCORIATED COVER IN SERVICE AREA AND ROUND WITH DEPRESSED COVER TO ACCEPT FLOOR FINISH IN FINISHED FLOOR AREAS.

D. CLEANOUTS AND TEST TEES: FLOOR CLEANOUTS SHALL BE JOSAM SERIES 58340, ZURN Z1425 - 3 OR APPROVED EQUAL. WALL CLEANOUTS SHALL BE JOSAM SERIES 58710, ZURN Z1440 - 1 OR APPROVED EQUAL. EXTERIOR CLEANOUTS SHALL BE JOSAM SERIES 58310, ZURN Z1420 - 27 OR APPROVED EQUAL. SET IN 15" X 15" X 6" CONCRETE PAD.

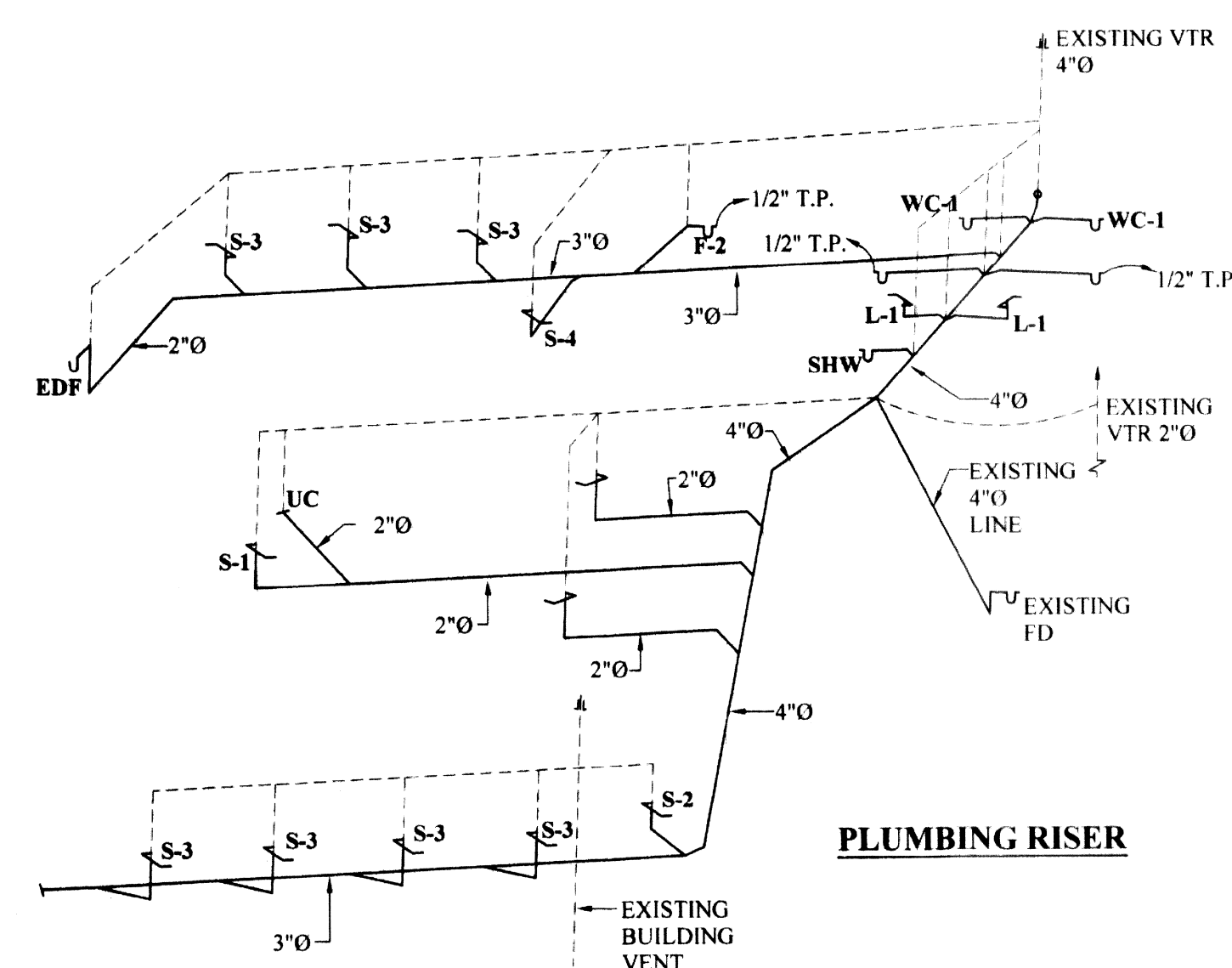
E. VALVE BOXES: EACH GATE VALVE SHALL BE PROVIDED WITH AN ADJUSTABLE, TWO PIECE, CAST IRON VALVE BOX OF A SIZE SUITABLE FOR THE VALVE. THE HEAD SHALL BE ROUND AND THE LID SHALL HAVE THE WORD "WATER" CAST ON IT. THE LEAST DIAMETER OF THE SHAFT OF THE BOX SHALL BE 5". EACH BOX SHALL BE GIVEN A HEAVY COAT OF BITUMINOUS PAINT AND SET IN AN 18" X 18" X 6" CONCRETE PAD.

F. BP - 1, BACKFLOW PREVENTER: REDUCED PRESSURE EQUAL TO WATTS WITH AIR GAP AND STRAINER. PIPE DRAIN TO FLOOR DRAIN. EQUAL PRODUCTS BY FEBCO, HERSEY, ZURN.

G. SHOCK ABSORBERS: SHOCK ABSORBERS SHALL BE INSTALLED ON ALL HOT AND COLD WATER SUPPLIES NEAR THE FAUCET. SHOCK ABSORBERS SHALL BE EQUAL TO PRECISION PLUMBING PRODUCTS, INC. WITH SIZES AS RECOMMENDED BY THE MANUFACTURER.



REFER TO DENTAL SHOP DRAWINGS FOR ADDITIONAL UTILITY LOCATION AND TECHNICAL SUPPORT DATA



FLOOR PLAN- PLUMBING PLAN

SCALE: 1/4" = 1'-0"

P-1

THESE DESIGN AND CONSTRUCTION DOCUMENTS AT THE SOLE PROPERTY OF JOSEPH F. SCHNEIDER, JR. AIA, ARCHITECT. NO USE OR REPRODUCTION OF THESE DOCUMENTS OR PARTIAL USE OR PARTIAL REPRODUCTION IS ALLOWED. NO USE OF THESE DRAWINGS WITHOUT THE WRITTEN EXPRESSED PERMISSION OF JOSEPH F. SCHNEIDER, JR. ARCHITECT IS ALLOWED.

REVISIONS	BY



THIRD FLOOR INTERIOR RENOVATIONS FOR
MID CITY SMILES
DR. MARK D. ANDERSON
3625 CANAL STREET
NEW ORLEANS, LOUISIANA 70119

JOSEPH F. SCHNEIDER JR., AIA
ARCHITECT
105 EVANGELINE DRIVE, SLIDELL, LOUISIANA 70460
(985) 847-0714
jfsarchitect@charter.net

DRAWN H. SCHNEIDER
CHECKED J. SCHNEIDER
DATE
SCALE AS NOTED
JOB NO
SHEET P-1
OF SHEETS