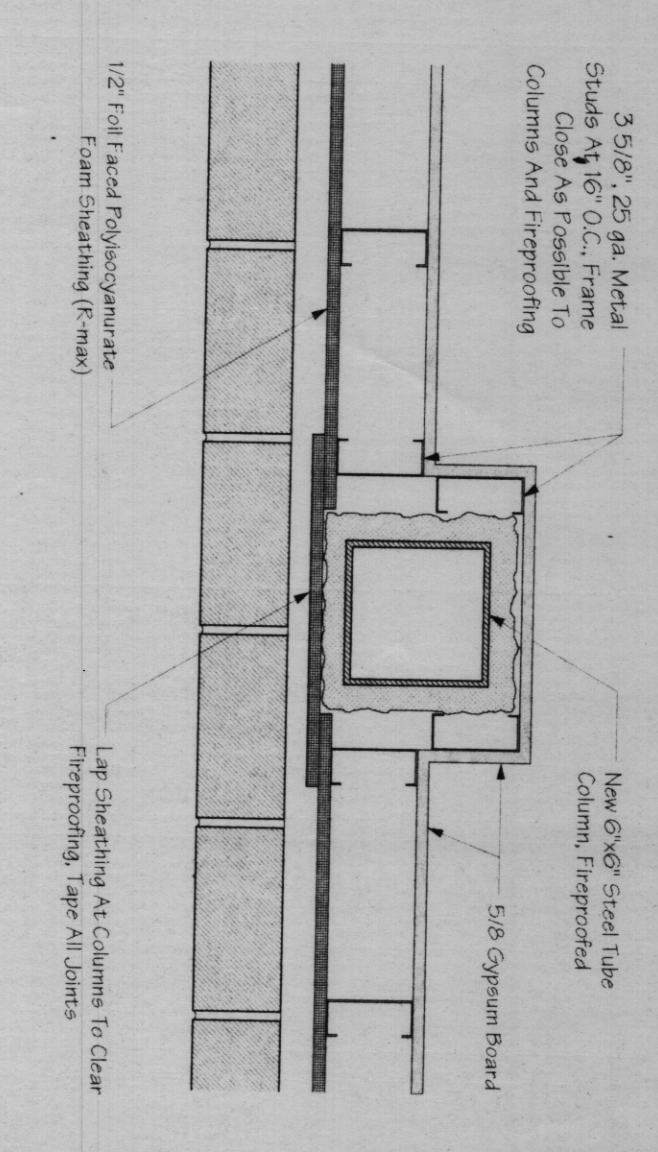
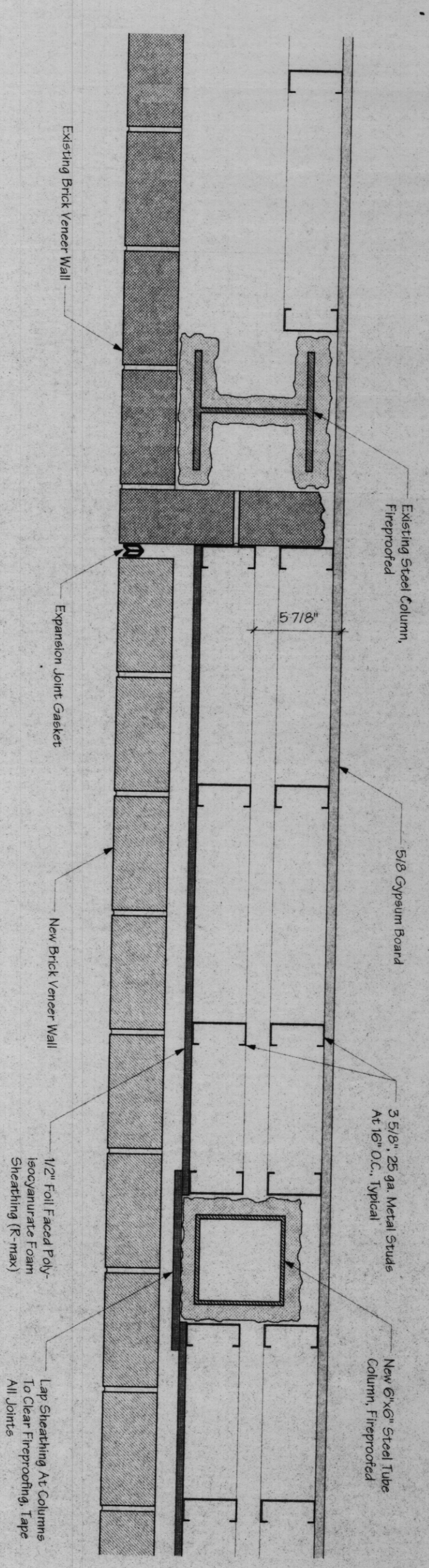


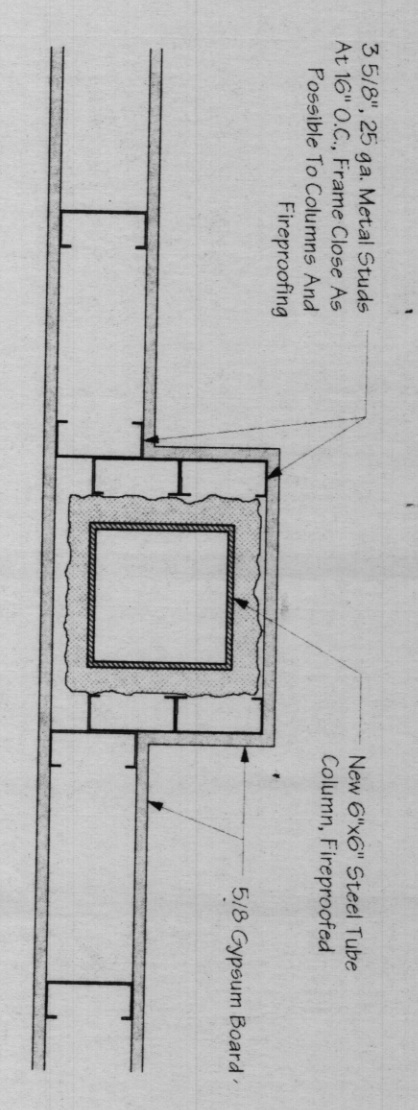
1 SECTION/DETAIL
SCALE: 1-1/2" = 1'-0"



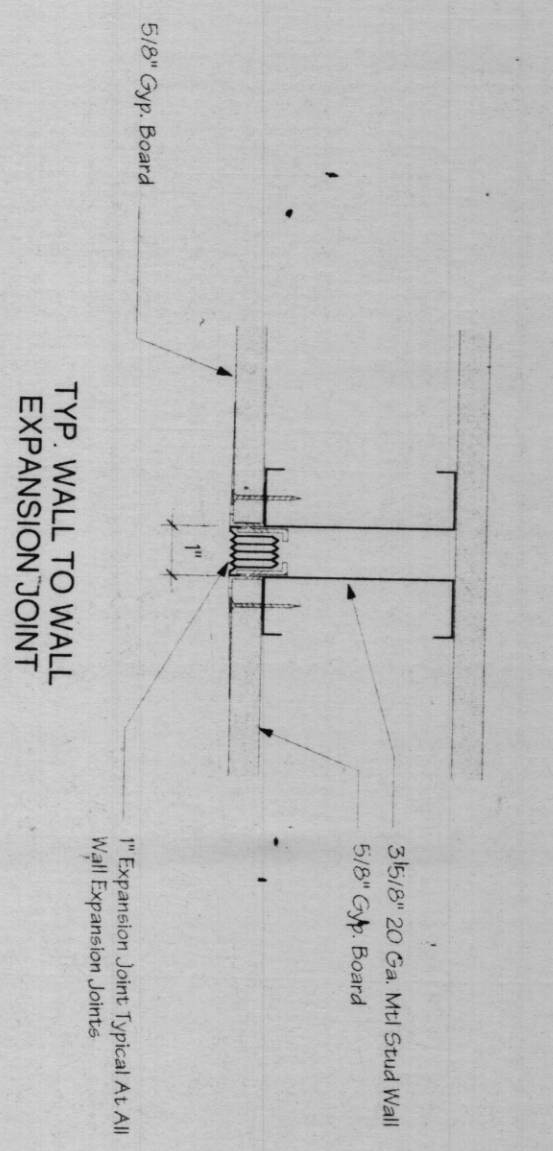
2 SECTION/DETAIL
SCALE: 1-1/2" = 1'-0"



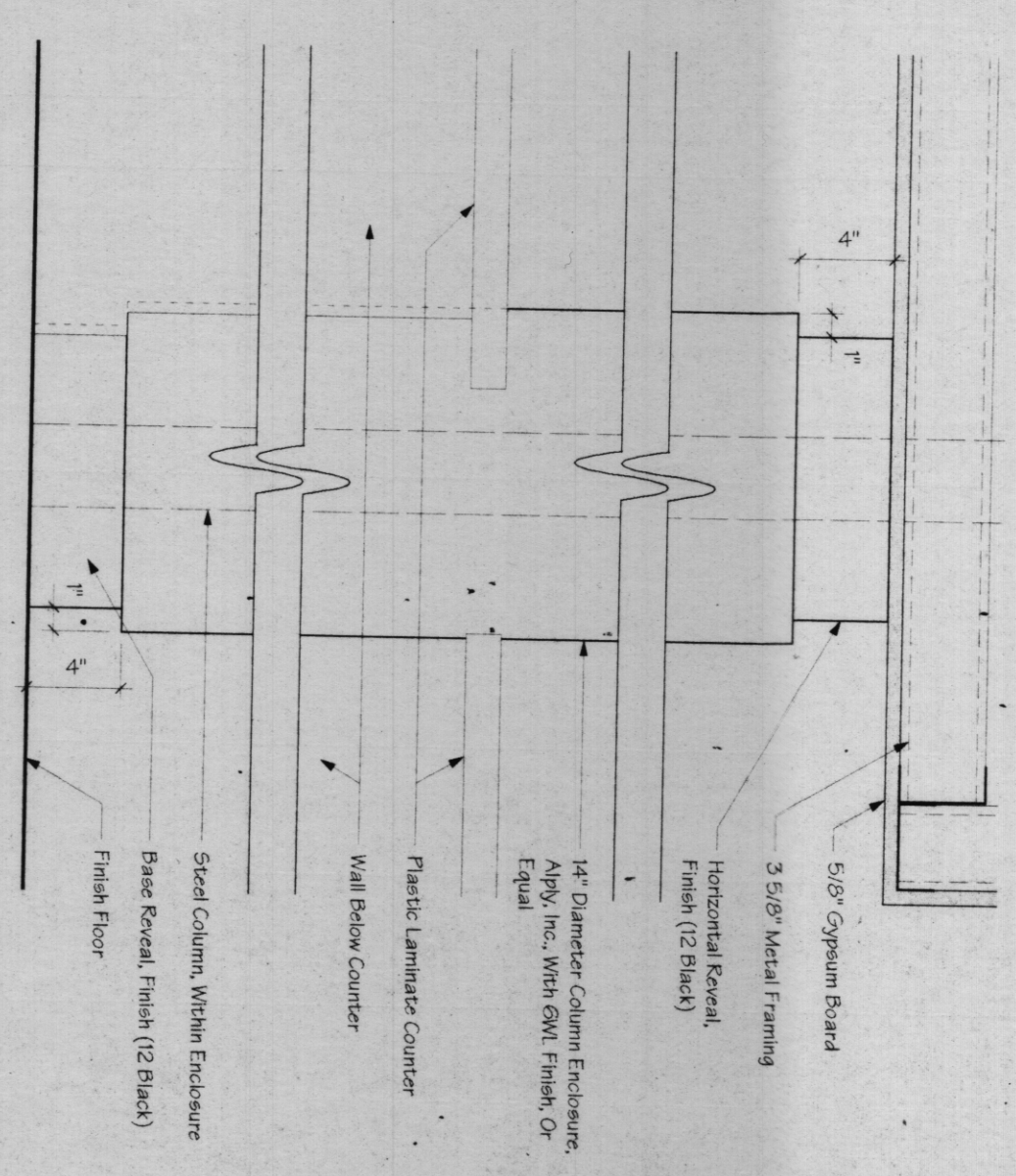
3 SECTION/DETAIL
SCALE: 1-1/2" = 1'-0"



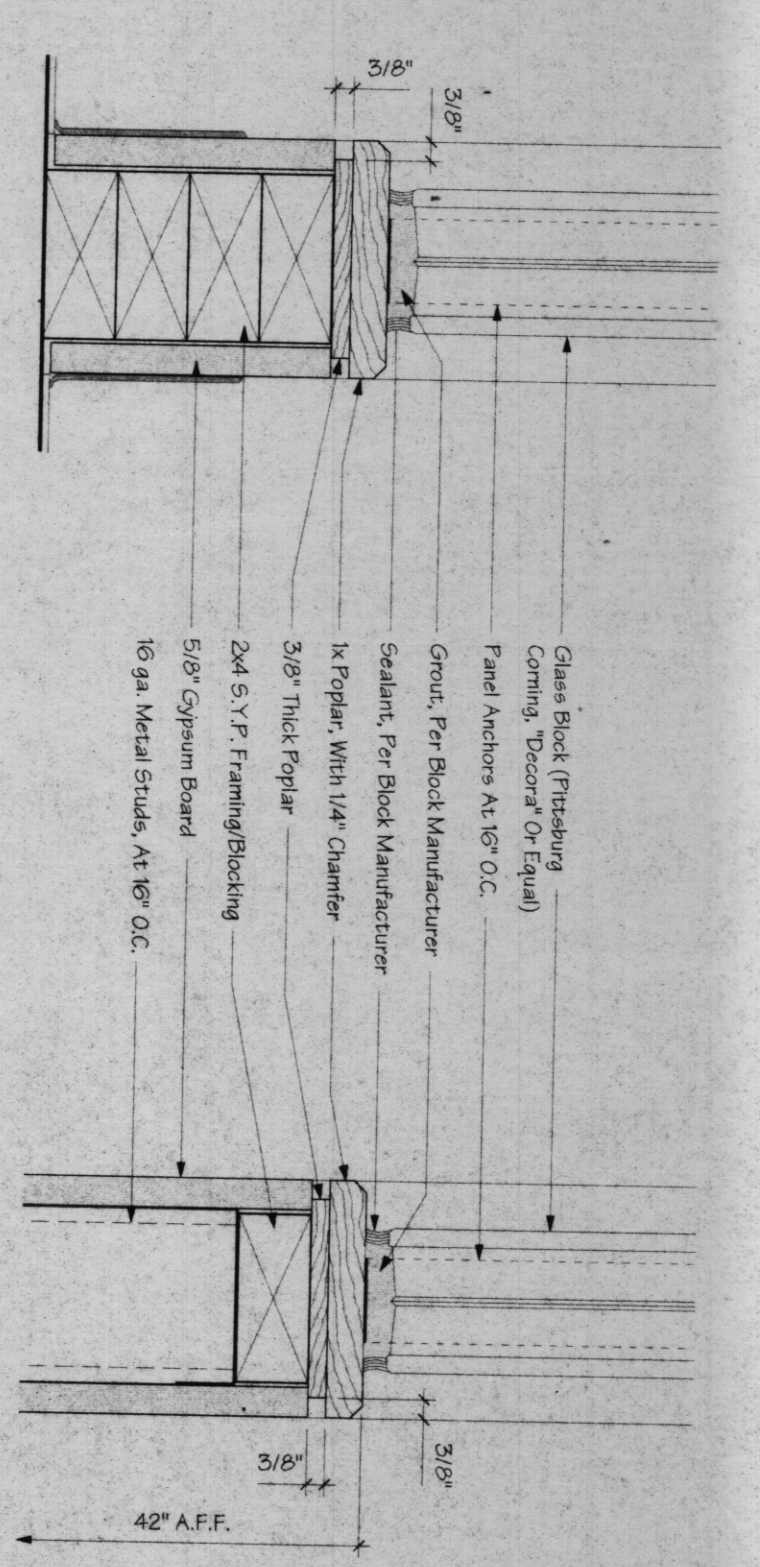
4 SECTION/DETAIL
SCALE: 1-1/2" = 1'-0"



5 EXPANSION JOINT DETAIL
SCALE: 3" = 1'-0"

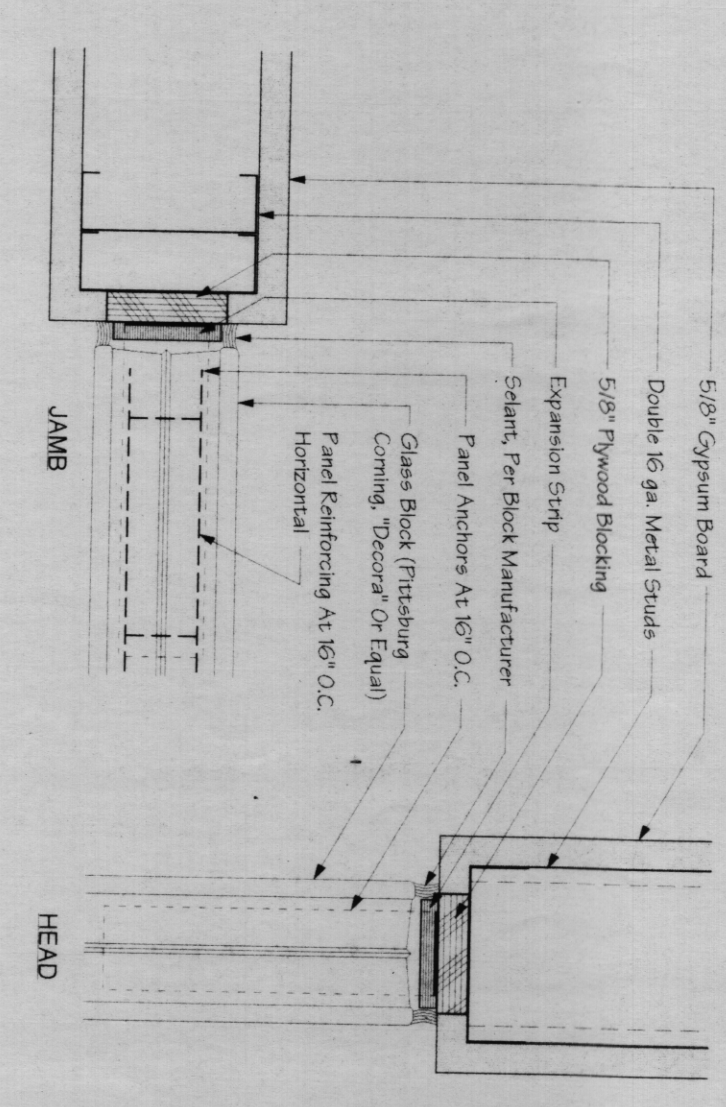


6 COLUMN ENCLOSURE DETAIL
SCALE: 1-1/2" = 1'-0"

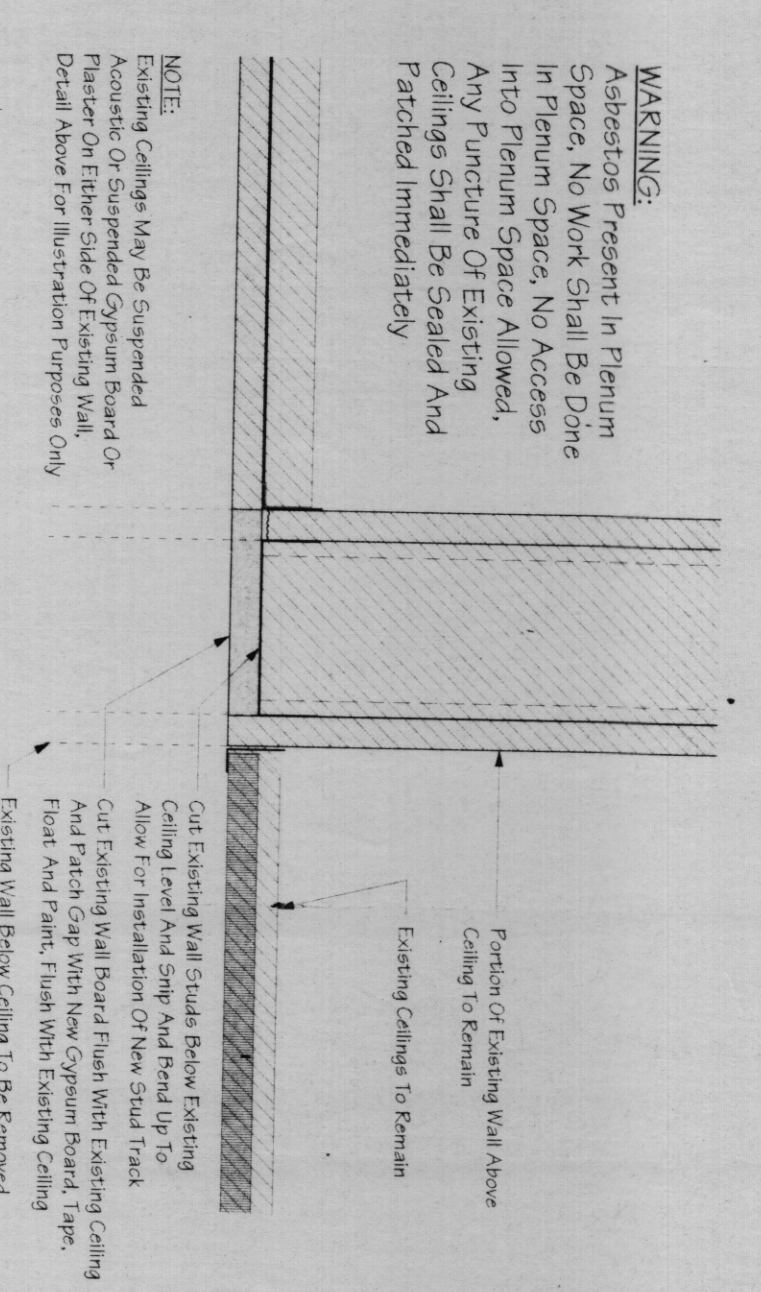


7 GLASS BLOCK SILL
SCALE: 3" = 1'-0"

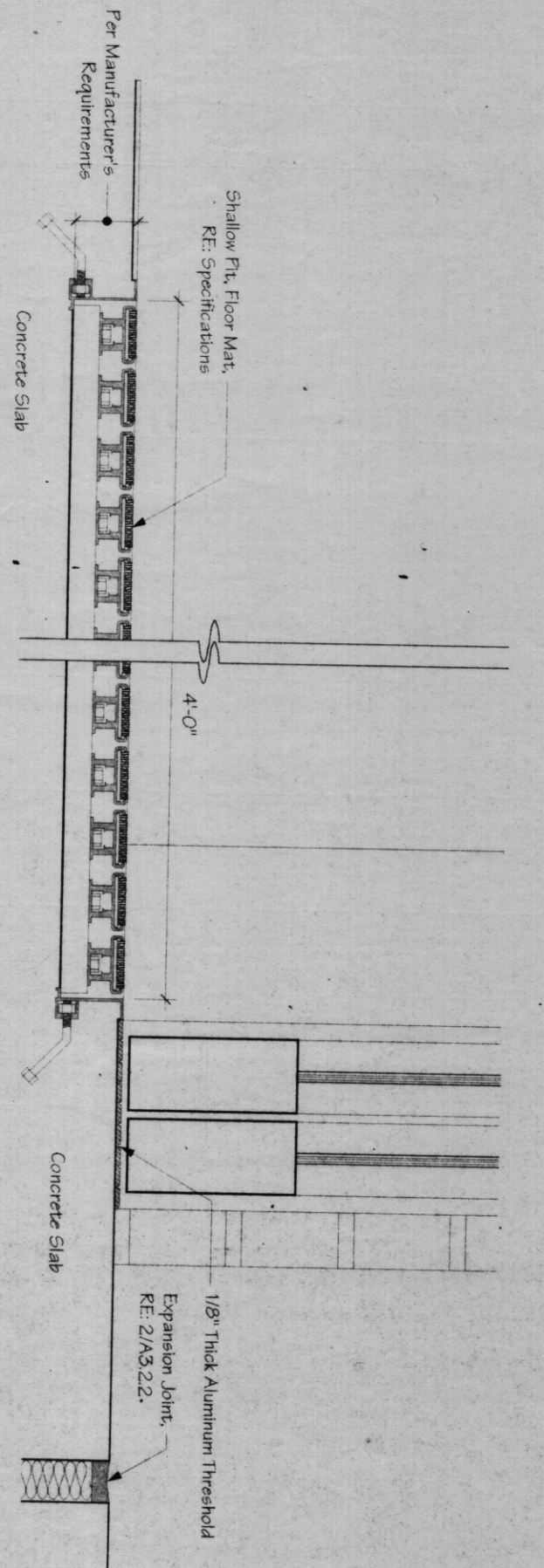
8 GLASS BLOCK SILL
SCALE: 3" = 1'-0"



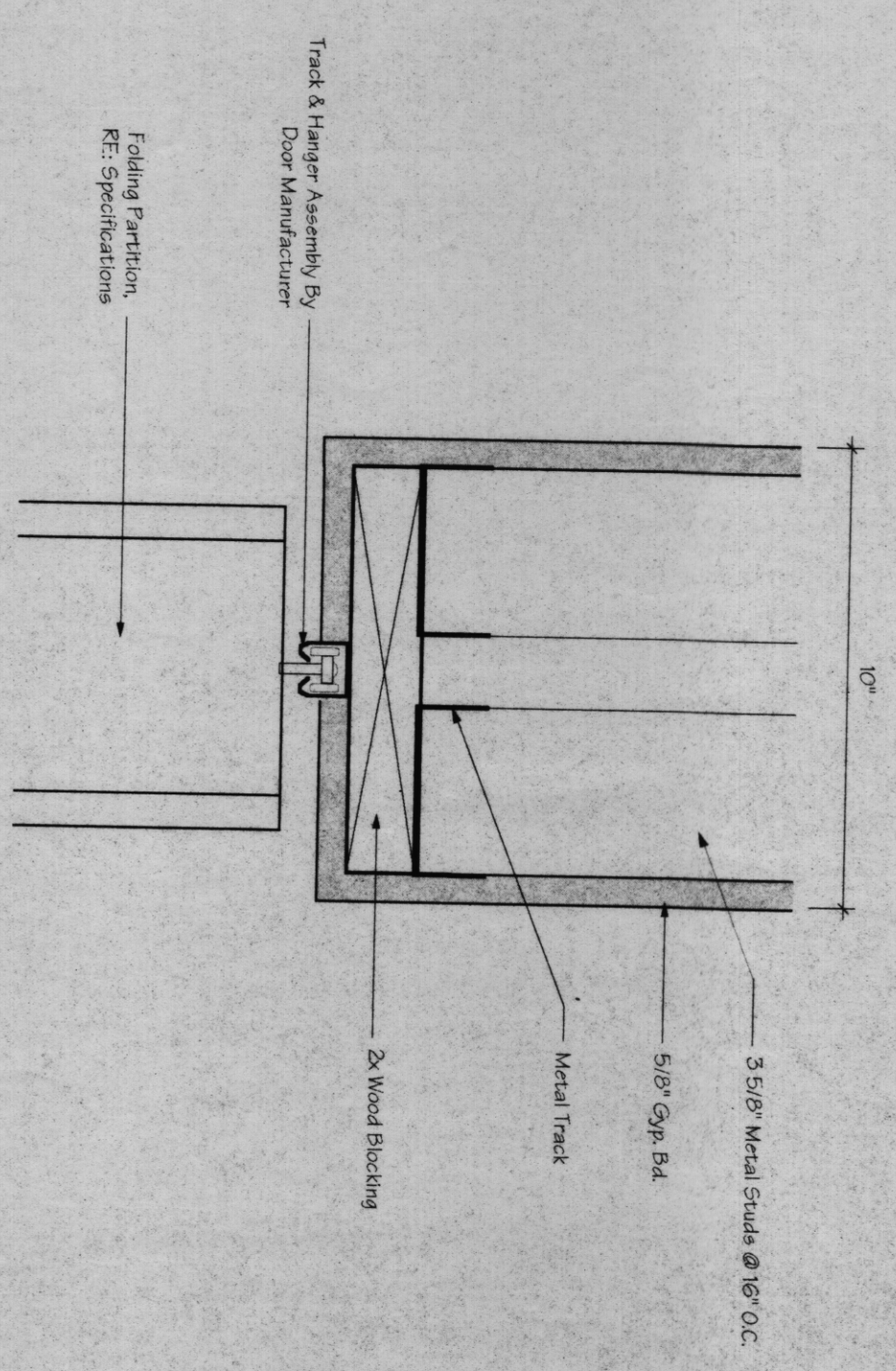
9 GLASS BLOCK HEAD/JAMB
SCALE: 3" = 1'-0"



10 CEILING DETAIL
SCALE: 3" = 1'-0"



11 ENTRANCE MAT/THRESHOLD/EXPANSION JOINT DETAIL
SCALE: 3" = 1'-0"



12 FOLDING PARTITION HEAD DETAIL
SCALE: 3" = 1'-0"

JOHN T. CAMPO & ASSOCIATES, INC.
ARCHITECTS PLANNERS
THE LYKES CENTER, SUITE 2016 300 PONDRAE STREET
NEW ORLEANS, LA 70130 (504) 568-9912

PHASE 1C LAB/ER RENOVATIONS
SLIDELL MEMORIAL HOSPITAL
1001 GAUSE BLVD., SLIDELL, LA

ISSUE DATES

DATE	REVISION
08/11/16	ISSUE FOR PERMIT
08/11/16	ISSUE FOR CONSTRUCTION
08/11/16	ISSUE FOR CONSTRUCTION
08/11/16	ISSUE FOR CONSTRUCTION

REVISIONS

DATE	BY	DESCRIPTION

PROGRESS PRINT
NOT FOR CONSTRUCTION

PARTIAL RELEASE
ONLY THE PORTION OF THE DRAWING INDICATED BY THE RELEASED PORTION IS TO BE RELEASED FOR CONSTRUCTION.

FULL RELEASE
THIS DRAWING IS FULLY RELEASED FOR CONSTRUCTION OF THIS PROJECT ONLY.

DATE: 08/11/16

DESIGNER: JTC

DRAWN BY: SD/DAL

CHECKED BY: JTC

JOB NUMBER: 9215-16M

COMPANY: JOHN T. CAMPO & ASSOCIATES

ALL INFORMATION CONTAINED HEREIN IS UNCLASSIFIED EXCEPT WHERE SHOWN OTHERWISE

INTERIOR SECTIONS/DETAILS
A 4.1
OF 106 SHEETS