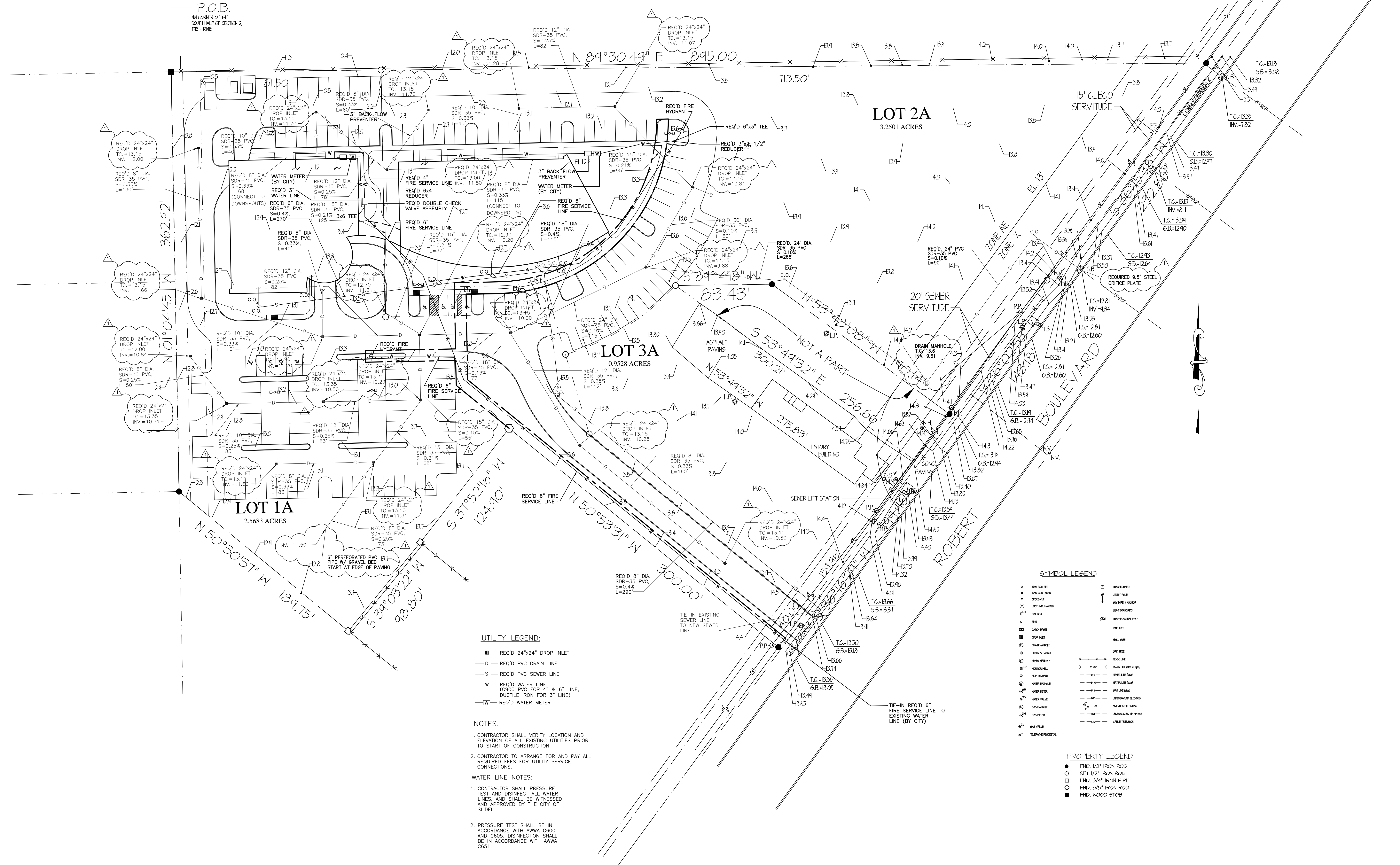


Project Number: 00015
 This drawing is the property of ROSASWARD a.i.a. architects, and is not to be reproduced or copied in whole or in part. It is only to be used for the project and the specifically identified lot(s).
 Notes on these drawings are valid on the original drawing only.
 These plans were prepared in this office under the personal supervision and to the best of our knowledge comply with one and local codes. We will promptly administer construction.



- UTILITY LEGEND:**
- REQ'D 24"x24" DROP INLET
 - D — REQ'D PVC DRAIN LINE
 - S — REQ'D PVC SEWER LINE
 - W — REQ'D WATER LINE (9000 PVC FOR 4" & 6" LINE, DUCTILE IRON FOR 3" LINE)
 - W — REQ'D WATER METER
- NOTES:**
- CONTRACTOR SHALL VERIFY LOCATION AND ELEVATION OF ALL EXISTING UTILITIES PRIOR TO START OF CONSTRUCTION.
 - CONTRACTOR TO ARRANGE FOR AND PAY ALL REQUIRED FEES FOR UTILITY SERVICE CONNECTIONS.
- WATER LINE NOTES:**
- CONTRACTOR SHALL PRESSURE TEST AND DISINFECT ALL WATER LINES, AND SHALL BE WITNESSED AND APPROVED BY THE CITY OF SLIDELL.
 - PRESSURE TEST SHALL BE IN ACCORDANCE WITH AWWA C600 AND C605. DISINFECTION SHALL BE IN ACCORDANCE WITH AWWA C651.

SYMBOL LEGEND

- | | | | |
|----|-------------------|---|---------------------|
| ○ | IRON ROD SET | □ | TRANSFORMER |
| ● | IRON ROD POINT | — | UTILITY POLE |
| + | OPENING | — | OPEN HOLE & ANCHOR |
| II | LOOT MEC WARE | — | LIGHT STANDARD |
| ⊕ | VALVE BOX | — | TRAFFIC SIGNAL POLE |
| ⊕ | MAN | — | POLE TREE |
| ⊕ | GAS VALVE | — | POLE TREE |
| ⊕ | DRAIN MANHOLE | — | POLE TREE |
| ⊕ | SEWER MANHOLE | — | POLE TREE |
| ⊕ | WATER MANHOLE | — | POLE TREE |
| ⊕ | WATER VALVE | — | POLE TREE |
| ⊕ | GAS MANHOLE | — | POLE TREE |
| ⊕ | GAS VALVE | — | POLE TREE |
| ⊕ | TELEPHONE MANHOLE | — | POLE TREE |
| ⊕ | TELEPHONE VALVE | — | POLE TREE |

PROPERTY LEGEND

- FND. 1/2" IRON ROD
- SET 1/2" IRON ROD
- FND. 3/4" IRON PIPE
- FND. 3/8" IRON ROD
- FND. WOOD STUB

ROSASWARD a.i.a. architects
 a professional corporation
 1010 Common Street, Suite 2750 • New Orleans, Louisiana 70112 • (504) 524-4375
 Doctors Hospital of Slidell
 Slidell, Louisiana

E:\LOGGOS\LogRGRib.rvt
 Project #2002-042
 1018 Central Avenue
 Metairie, LA 70001
 Ph: (504) 888-1490
 Fax: (504) 888-1491