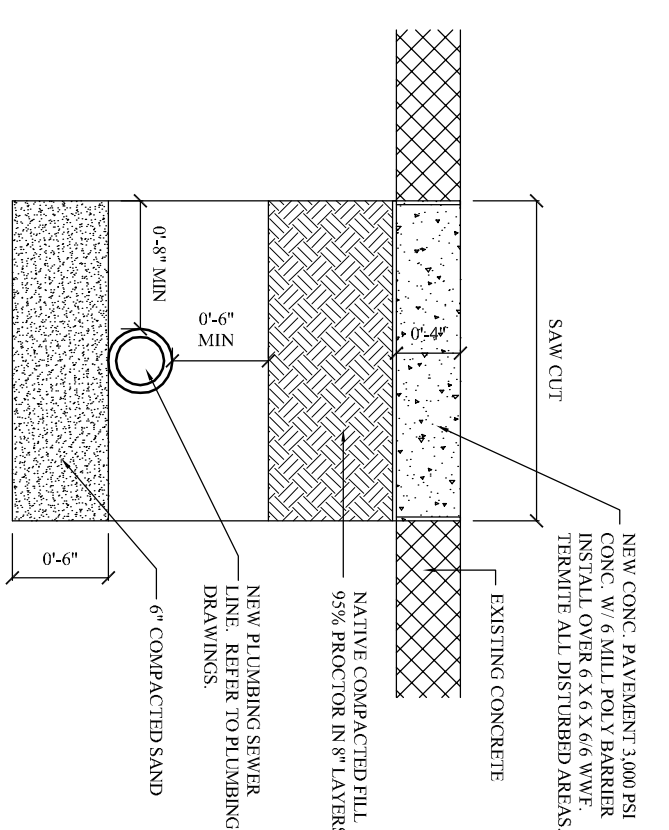
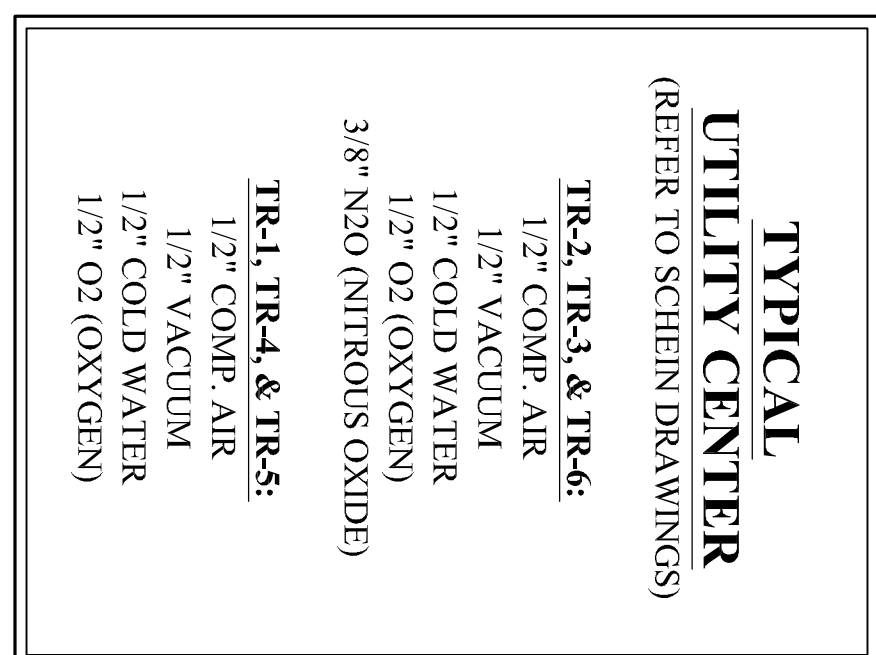
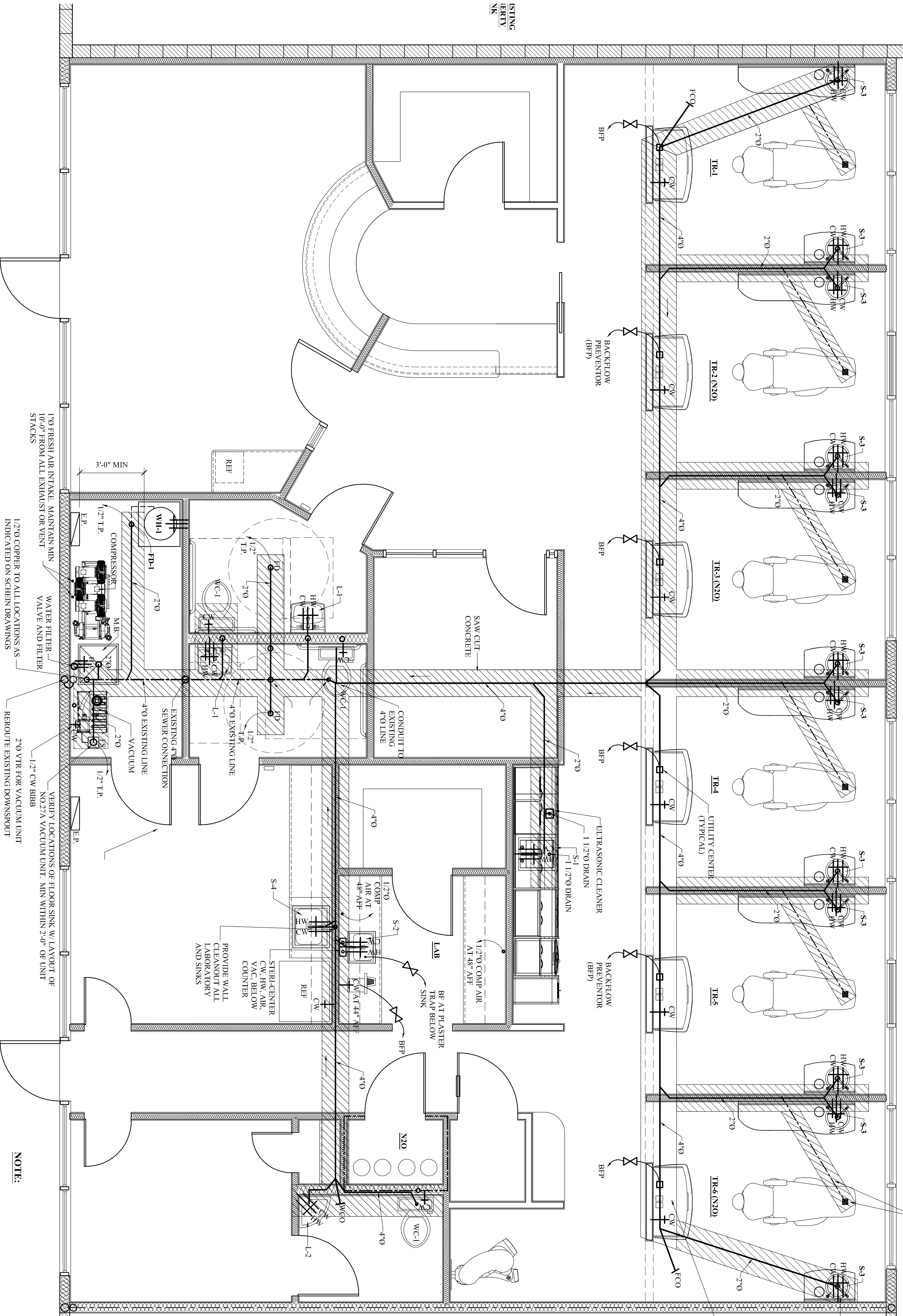


- NOTES:**
- HORIZONTAL BUILDING DRAINAGE LESS THEN 3'-0" SHALL BE INSTALLED WITH A FALL OF NOT LESS THEN 1/4" PER FOOT WITH CLEAN OUTS LOCATED NOT MORE THEN 50'-0" INTERVALS.
 - HORIZONTAL BUILDING DRAINAGE 3'-0" OR LARGER SHALL BE INSTALLED WITH A FALL OF NOT LESS THEN 1/8" PER FOOT WITH CLEAN OUTS LOCATED NOT MORE THEN 80'-0" INTERVALS.
 - ALL WATER SUPPLY AND DISTRIBUTION SHALL COMPLY WITH 2012 INTERNATIONAL PLUMBING CODE.



BFP = BACK FLOW PREVENTOR

SAW CUT EXISTING CONCRETE SLAB. EXCAVATE FOR NEW SEWER LINES. BACK FILL COMPACT. TERMITE PROOF. INSTALL NEW VISQUEEN AND INSTALL NEW 4" THICK 3,000 PSI CONCRETE W/ 6 X 6 X 6 W.F.F.

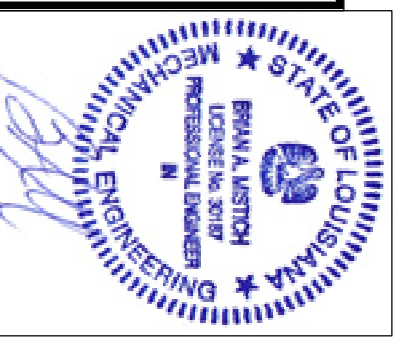
- NOTE:**
- CONTRACTOR SHALL VERIFY LOCATION OF ALL GRADE BEAMS IN FOUNDATION PRIOR TO SAW CUTTING AND DEMOLITION.
 - REFER TO SCHEIN DRAWINGS FOR VACUUM, AIR, OXYGEN, AND N20 LINE LOCATIONS.

FLOOR PLAN- PLUMBING PLAN

SCALE: 3/8" = 1'-0"

DAMMON ENGINEERING

534 Old Spanish Trail Slidell, LA 70458 (985) 649-5832



THESE DESIGN AND CONSTRUCTION DOCUMENTS AT THE SOLE PROPERTY OF JOSEPH F. SCHNEIDER, JR. AIA, ARCHITECT. NO USE OR REPRODUCTION OF THESE DOCUMENTS OR PARTIAL USE OR PARTIAL REPRODUCTION IS ALLOWED. NO USE OF THESE DRAWINGS WITHOUT THE WRITTEN EXPRESSED PERMISSION OF JOSEPH F. SCHNEIDER, JR. ARCHITECT IS ALLOWED.

REVISIONS	BY

JOSEPH F. SCHNEIDER JR., AIA ARCHITECT

105 EVANGELINE DRIVE, SLIDELL, LOUISIANA 70460
(985) 847-0714 jfsarchitect@charter.net

GROUND FLOOR TENANT BUILDOUT FOR DR. JAY DUMAS, DDS
3002 GENTILLY BLVD SUITES A & B
NEW ORLEANS, LOUISIANA 70122

DRAWN	H. SCHNEIDER
CHECKED	J. SCHNEIDER
DATE	
SCALE	AS NOTED
JOB NO.	
SHEET	P-1
SHEETS	