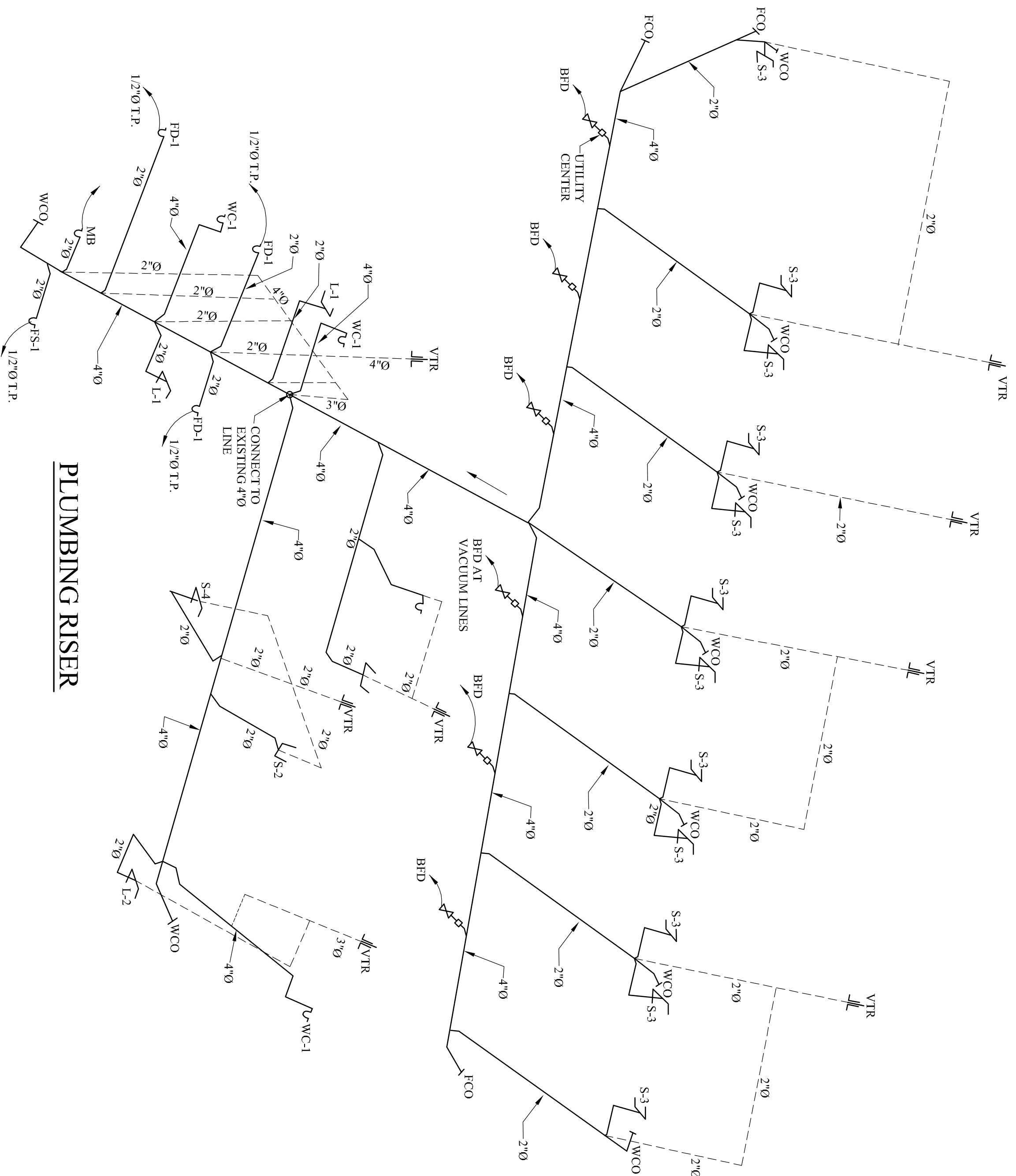


**PLUMBING SCHEDULE**

- L-1 LAVATORY:**  
WALL MOUNTED PORCELAIN LAVATORY WITH WING HANDLES. PROVIDE WITH PIPE AND DRAIN INSULATION.
- WC-1 WATER CLOSET (HANGING APPED WATER CLOSET):**  
LOW CONSUMPTION SINK TYPE PRESSURE ASSISTED WATER CLOSET. HANDICAPPED WITH MINIMUM 17-1/2" HIGH ELONGATED 1.5 GPF.
- WH-1 WATER HEATER:**  
60 GALLON ELECTRIC WATER HEATER WITH TWO 4,500 WATT NON-SIMULTANEOUS ELECTRIC ELEMENTS INSULATED AND JACKETED GLASS LINED STEEL WITH EXPANSION TANK AND CIRCULATING PUMP.
- FD-1 FLOOR DRAIN:**  
2" DIAMETER FLOOR DRAIN WITH 1/2" TRAP PRIMER.
- S-1 SINK, STERILIZATION ROOM:**  
SINKLE BOWL, STAINLESS STEEL HEAVY DUTY SINK RIMMED WITH HOT AND COLD WATER. PROVIDE WITH LEVER HANDLES AND ANGLE VALVES.
- S-2 SINK, LAB:**  
SINKLE BOWL, STAINLESS STEEL HEAVY DUTY RIMMED STAINLESS STEEL SINK WITH HOT AND COLD WATER. PROVIDE WITH LEVER HANDLES AND ANGLE VALVES. UNIT PROVIDED WITH PLASTER TRAY. REFER TO DENTAL EQUIPMENT DRAWINGS.
- S-3 SINK, TREATMENT ROOMS (BY DENTAL EQUIPMENT SUPPLIER):**  
ROUND SINKLE BOWL RIMMED STAINLESS STEEL TREATMENT ROOM SINK WITH HOT AND COLD WATER. PROVIDE WITH LEVER HANDLES AND ANGLE VALVES.
- S-4 SINK, BREAKROOM:**  
SINKLE BOWL, STAINLESS STEEL RIM TYPE SINK WITH LEVER HOT & COLD WATER HARDWARE AND ANGLE VALVES.
- FS-1 FLOOR SINK:**  
4" X 9" FLOOR SINK W/ 1/2 GRATE AND 1/2" TRAP PRIMER.
- MB-1: 24" X 24" FLOOR MOUNTED MOP BASIN**

**MISCELLANEOUS PLUMBING ITEMS**

- A. VB-1 VACUUM BREAKER:** INSTALL VACUUMS BREAKER ON COLD WATER INLET TO WATER HEATER UNIT SHALL BE EQUAL TO WATTS 36-A.
- B. WHA WATER HAMMER ARRESTORS:** STAINLESS STEEL BELLOW/ COMPRESSION CHAMBER TYPE, PRE-CHARGED AND PERMANENTLY SEALED AT THE FACTORY. EQUAL TO SWITHS HYDROTOL # 5005.
- C. INTERIOR FINISHED FLOOR CLEANOUT:** SERIES 88660 BY JOSAM OR EQUAL. LAQUERED CAST IRON, TWO PIECE BODY WITH DOUBLE DRAINAGE FLANGE, WEEP HOLES, REVERSIBLE CLAMPING COLLAR AND ADJUSTABLE NICKEL BRONZE STRAINER ROUND WITH SCRIBATED COVER IN SERVICE AREA AND ROUND WITH DEPRESSED COVER TO ACCEPT FLOOR FINISH IN FINISHED FLOOR AREA.
- D. CLEANOUTS AND TEST TEES:** FLOOR CLEANOUTS SHALL BE JOSAM SERIES 88340, ZURB Z1485 -3 OR APPROVED EQUAL. WALL CLEANOUTS SHALL BE JOSAM SERIES 88710, ZURB Z1440-1 OR APPROVED EQUAL. EXTERIOR CLEANOUTS SHALL BE JOSAM SERIES 88310, ZURB Z1420-27 OR APPROVED EQUAL, SET IN 15" X 15" X 6" CONCRETE PAD.
- E. VALVE BOXES:** EACH GATE VALVE SHALL BE PROVIDED WITH AN ADJUSTABLE, TWO PIECE, CAST IRON VALVE BOX OF A SIZE SUITABLE FOR THE VALVE. THE HEAD SHALL BE ROUND AND THE BOX SHALL HAVE THE WORD "WATER" CAST ON IT. THE LEAST DIAMETER OF THE SHAFT OF THE AN 18" X 18" X 6" CONCRETE PAD.
- F. BP-1 BACKFLOW PREVENTER:** REDUCED PRESSURE EQUAL TO WATTS WITH AIR GAP AND STRAINER. PIPE DRAIN TO FLOOR DRAIN. EQUAL PRODUCTS BY FERCO, HERSEY, ZURB.
- G. SHOCK ABSORBERS:** SHOCK ABSORBERS SHALL BE INSTALLED ON ALL HOT AND COLD WATER SUPPLIES NEAR THE FAUCET. SHOCK ABSORBERS SHALL BE EQUAL TO PRECISION PLUMBING PRODUCTS, INC., WITH SIZES AS RECOMMENDED BY THE MANUFACTURER.



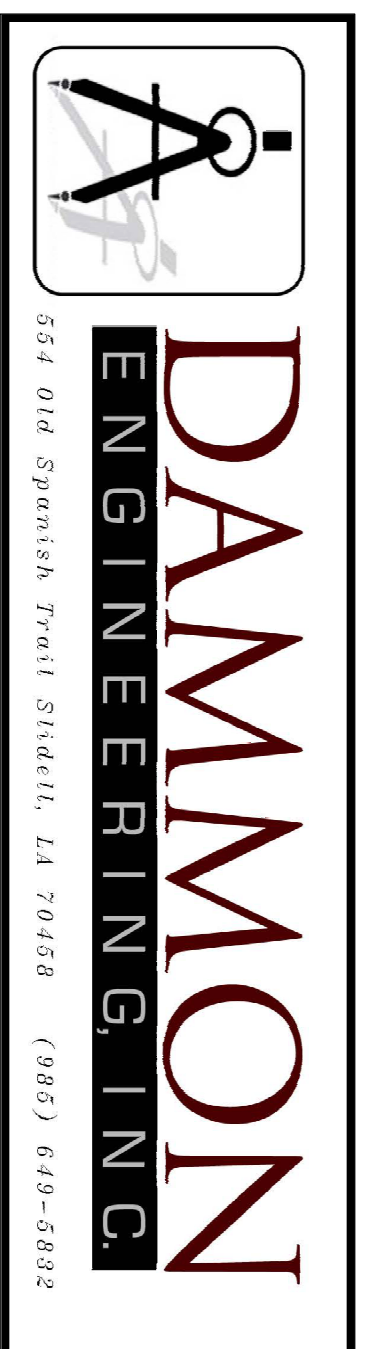
**TOILET PARTITION & ACCESSORIES**

BASED ON BRADLEY OR APPROVED EQUAL

- PAPER TOWEL DISPENSER/ WASTE RECEPTACLE:**  
BRADLEY MODEL NO. B-262. 1 EACH TOILET ROOM.
- TOILET TISSUE DISPENSER:**  
BRADLEY NO. 523 NON-CONTROLLED DUAL ROLL. ONE (1) EACH TOILET STALL.
- SOAP DISPENSER:**  
BRADLEY MODEL NO. B-112 - WALL MOUNTED SOAP DISPENSER. ONE (1) EACH LAVATORY.
- GRAB BARS:**  
BRADLEY NO. 812 - 1-1/2"0 WITH SAFETY GRIP FINISH. ONE (1) 42" LONG EACH HANDICAP TOILET STALL AND ONE (1) 36" LONG EACH HANDICAP TOILET STALL PER DRAWINGS. GRAB BARS SHALL BE CONCEALED MOUNTING TYPE BOTH BAR CONFIGURATION SHALL BE TYPE "906".

**GENERAL NOTES:**

1. HOT WATER PIPE INSULATION SHALL BE 1" THICK FOR PIPING LESS THEN 1-1/2" THICK. FOR PIPING GREATER THEN 1-1/2" THICK PIPING INSULATION SHALL BE 2" THICK. COLD WATER PIPE INSULATION SHALL BE 1/2" THICK FOR PIPING LESS THEN 1-1/2" AND 1" FOR PIPING GREATER THEN 1-1/2" THICK.
2. LAVATORY FAUCET OUTLET TEMPERATURE LIMITED TO 110° F. IN PUBLIC RESTROOMS.
3. K&N INSULATION FOR ALL SUPPLY, DUCTWORK LOCATED OUTSIDE THE BUILDING, UNVENTILATED ATTICS AND ROOF INSULATION. UNCONDITIONED AND UNDERGROUND SPACES H3 50R RETURN AIR DUCTS LOCATED OUTSIDE THE BUILDING, IN VENTILATED ATTICS AND IN NON-VENTED ATTIC ABOVE INSULATED CEILING.
4. PROVIDE HVAC BALANCING REPORT TO OWNER AFTER HVAC IS COMPLETED.
5. PROVIDE METAL PAN AT HVAC ATTIC/HORIZONTAL UNITS. PROVIDE 7" TRAP AND P70 CONDENSE DRAIN LINE OVER SERVICE LINE. PROVIDE WITH DRAIN STOP VALVE AND SHUT OFF WITH SHUT OFF SWITCH. PROVIDE WITH RETURN AIR UNIT AND RETURN AIR SIDE. PROVIDE WITH RES-SET SWITCH.
6. PROVIDE OVERFLOW PAN W/ P70 DRAIN LINE AT ATTIC WATER HEATERS.
7. PROVIDE 3/8" PLYWOOD CLEAR AROUND ATTIC HVAC UNITS AND WATER HEATERS.
8. MINIMUM PANEL WIRING SIZE:  
30A - #10 AWG  
40A - #8 AWG  
60A - #6 AWG
9. ALL ELECTRICAL SWITCHES AND POWER OUTLETS LOCATED IN RATED FIRE PARTITIONS SHALL BE FIRE CALULATED PER UNDERWRITERS LABORATORY REQUIREMENTS.



THESE DESIGN AND CONSTRUCTION DOCUMENTS AT THE SOLE PROPERTY OF JOSEPH F. SCHNEIDER, JR. AIA, ARCHITECT. NO USE OR REPRODUCTION OF THESE DOCUMENTS OR PARTIAL USE OR PARTIAL REPRODUCTION IS ALLOWED. NO USE OF THESE DRAWINGS WITHOUT THE WRITTEN EXPRESSED PERMISSION OF JOSEPH F. SCHNEIDER, JR. ARCHITECT IS ALLOWED.

DRAWN	H. SCHNEIDER
CHECKED	J. SCHNEIDER
DATE	
SCALE	AS NOTED
JOB NO.	
SHEET	P-2
OF	SHEETS

**JOSEPH F. SCHNEIDER JR., AIA ARCHITECT**

105 EVANGELINE DRIVE, SLIDELL, LOUISIANA 70460  
(985) 847-0714 jfsarchitect@charter.net

**GROUND FLOOR TENANT BUILDOUT FOR DR. JAY DUMAS, DDS**

3002 GENTILLY BLVD SUITES A & B  
NEW ORLEANS, LOUISIANA 70122

REVISIONS	BY