



RHEEM - RUUD
ADVANTAGEPLUS™



Designed With You In Mind.™

SEALED-COMBUSTION GAS-FIRED WATER HEATERS 100,000 BTU/HR. THRU 199,000 BTU/HR.

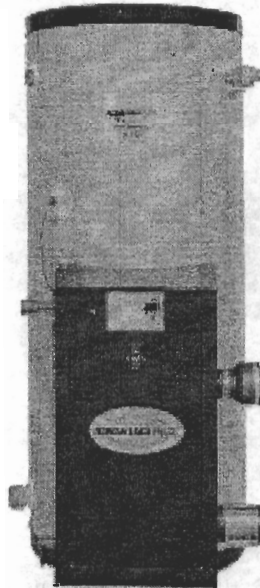
RHEEM-RUUD AdvantagePlus™ Gas Commercial Water Heaters are specifically designed to provide customers with maximum savings on operation, space and installation. Designed with the most advanced technology available, these products optimize efficiency and operating reliability.

CONSTRUCTION FEATURES:

- 316L stainless steel tank construction (requires no anode rods).
- No chimney required; direct vent using plastic pipe.
- Thermal efficiency of 95% dramatically reduces operating costs.
- 85 equivalent feet of vent length.
- Low NO_x emissions. Meets SCAQMD Rule 1146.2.
- High impact plastic jacket eliminates dents.
- 2" of non-CFC, polyurethane foam insulation.
- Less than 1/2 degree per hour heat loss (R17).
- Corrosion resistant, high efficiency 90/10 cupronickel heat exchanger.
- Self-diagnostic electronic control with digital readout for water temperature, set point and differential.
- Removable front cover allows easy access to equipment (24" service clearance recommended).
- Temperature range from 70°F to 160°F (maximum temperature setting of 180°F available on HE45-160 and HE45-199 booster models only).
- Zero clearance to all combustible surfaces.
- Factory installed AGA/ASME rated T&P relief valve.
- Booster installation kit provided with HE45-160 and HE45-199 booster models.

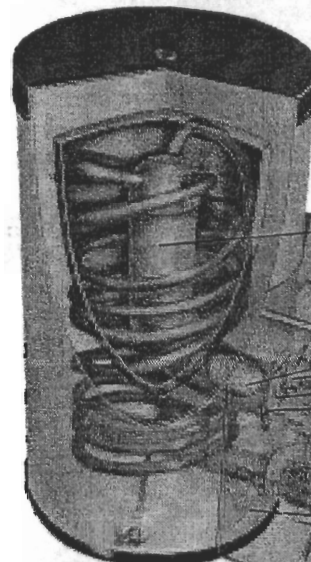
CERTIFICATIONS AND RATINGS:

The water heaters are UL/ULC listed and exceed the minimum efficiency requirements of ASHRAE/IES 90.1b-1992. All water heaters are supplied with an AGA/ASME rated temperature and pressure relief valve. The control panel is an integrated solid state temperature and ignition control device with integral diagnostics, LED fault display capability and a digital display of temperature settings. All models are North Carolina Code compliant. **CERTIFIED FOR A 150 PSI MAXIMUM WORKING PRESSURE.**



**NO CHIMNEY
REQUIRED -
VENTS UP TO 40
FEET USING 3"
SCHEDULE 40 PVC,
CPVC OR ABS PIPE**

**100,000 BTU
AND 130,000 BTU MODELS
ARE CERTIFIED TO VENT
WITH 2" SCHEDULE 40 PVC,
CPVC OR ABS PIPE**



Heat Exchanger/
Combustion Chamber
Control Wall and E.C.O.
Air Inlet Connector
Gas Valve
Combustion Blower
Gas Burner
Gas Inlet Nipple 1/2"
Hot Surface Ignitor
Flame Probe
Exhaust Outlet Connector
Control Board
Vent Over-Temp.
Reset Switch
Exhaust Elbow and Drain
Pressure Switch
Transformer
Condensate Connector
Hose
Condensate Connector