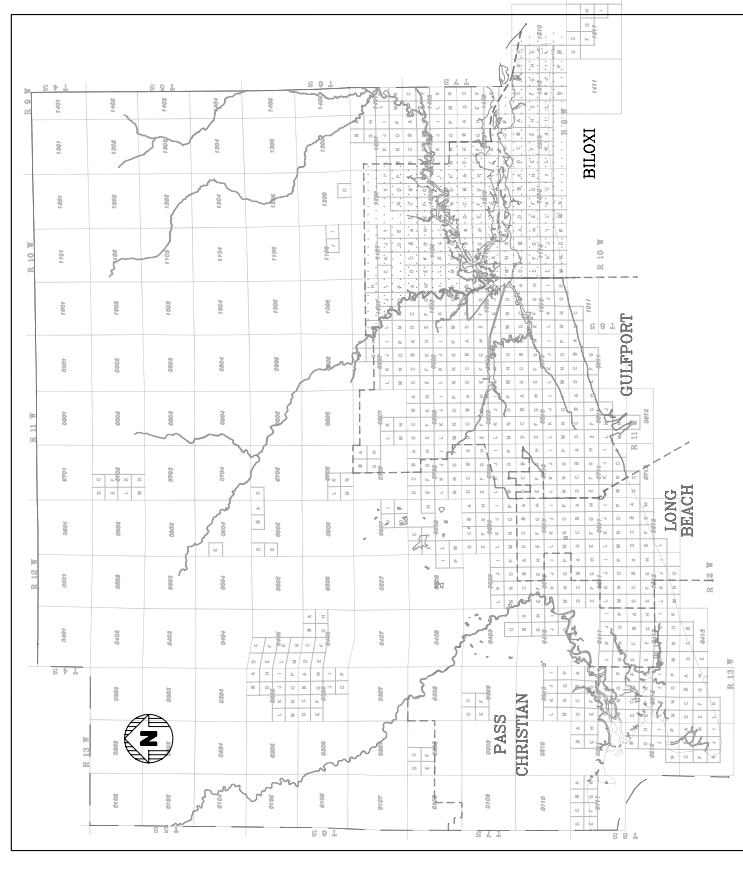
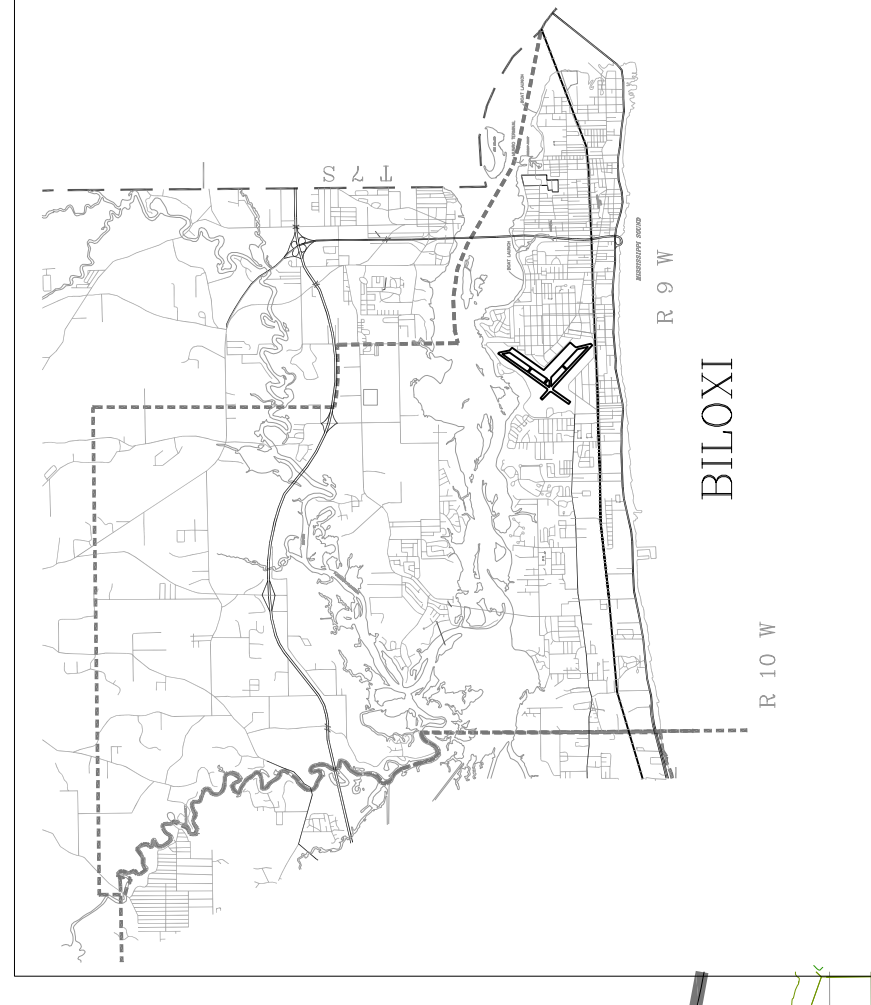


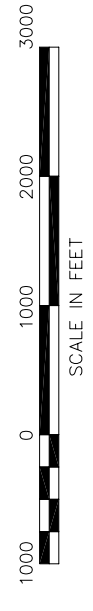
STATE OF MISSISSIPPI
HARRISON COUNTY



HARRISON COUNTY



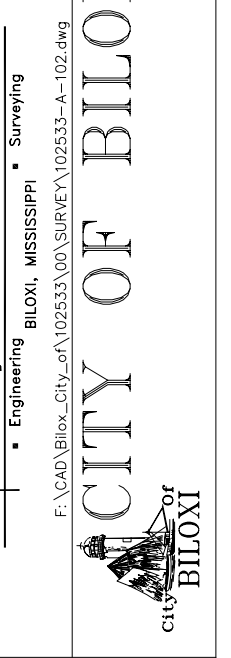
CITY OF BILOXI



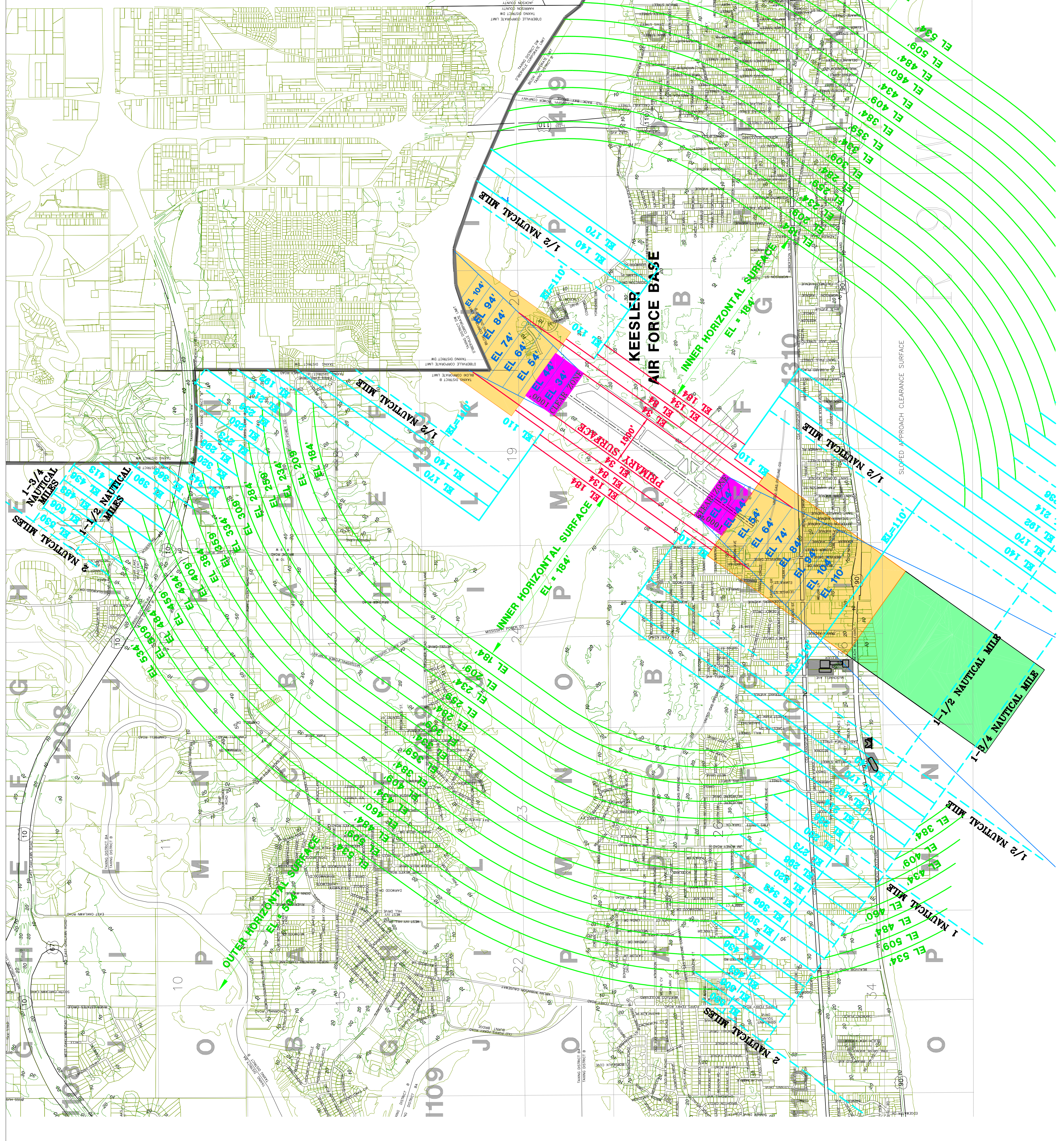
- EXISTING MILITARY OPERATIONS SURFACE
- SLOPED CONICAL SURFACE
- SLOPED TRANSITIONAL SURFACE
- SLOPED APPROACH CLEARANCE SURFACE
- APZ I
- APZ II
- CLEARZONE

NOTES:
 1) ELEVATIONS ARE BASED ON NAVD83. SOUND ELEVATIONS MUST BE SUBTRACTED TO ESTABLISH BUILDING HEIGHT.
 2) AIRPORT ELEVATION IS 34.0' MSL. 50:1 SLOPE.
 3) TRANSITIONAL SURFACE: 7:1 SLOPE.
 4) CLEAR ZONE = 1500' X 1000'.
 5) APZ I = 3000' X 1000'.
 6) APZ II = 3000' X 1000' AFTER APZ I.

WINK, INCORPORATED
Engineering, Planning, Architecture, Surveying



CITY OF BILOXI HEIGHT/HAZARD OVERLAY



REVISION D