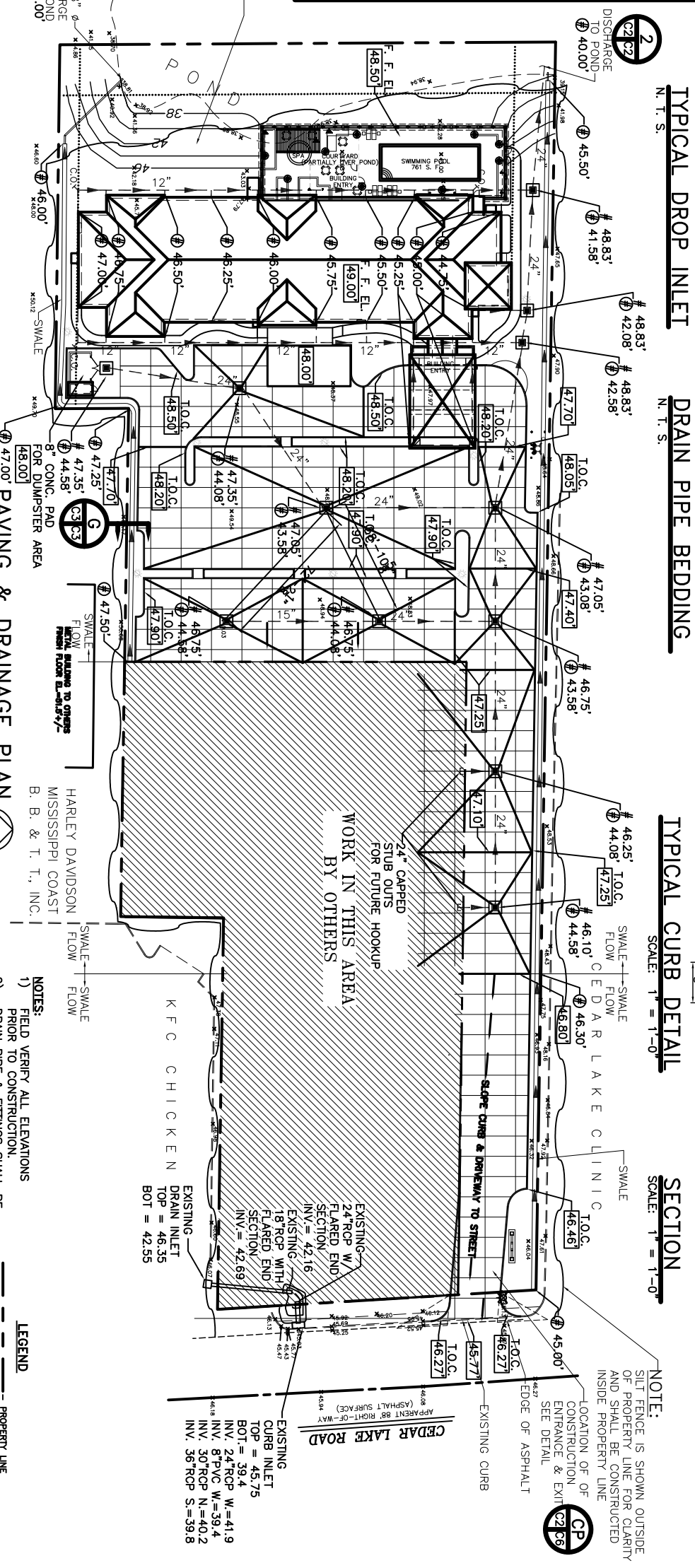
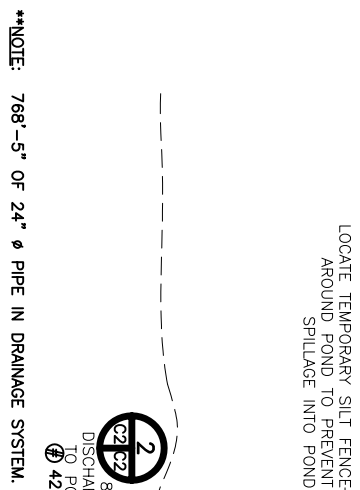


NO.	DESCRIPTION	DATE	BY	CHKD.
1	DESIGN	11-01-06	EH	EH
2	DESIGN	10-26-06	EH	EH
3	DESIGN	10-23-06	EH	EH
4	DESIGN	10-23-06	EH	EH
5	DESIGN	10-23-06	EH	EH
6	DESIGN	10-23-06	EH	EH
7	DESIGN	10-23-06	EH	EH
8	DESIGN	10-23-06	EH	EH
9	DESIGN	10-23-06	EH	EH
10	DESIGN	10-23-06	EH	EH
11	DESIGN	10-23-06	EH	EH
12	DESIGN	10-23-06	EH	EH
13	DESIGN	10-23-06	EH	EH
14	DESIGN	10-23-06	EH	EH
15	DESIGN	10-23-06	EH	EH
16	DESIGN	10-23-06	EH	EH
17	DESIGN	10-23-06	EH	EH
18	DESIGN	10-23-06	EH	EH
19	DESIGN	10-23-06	EH	EH
20	DESIGN	10-23-06	EH	EH

NOTE: THIS CHART REFLECTS DRAINAGE CALCULATIONS FOR LOTS 2A AND 3A.



NOTE: 768'-5" OF 24" Ø PIPE IN DRAINAGE SYSTEM.

SCALE: 1" = 30'-0" DRAINAGE

SCALE: 1" = 1'-0" SECTION

SCALE: 1" = 1'-0" DETAIL

SCALE: AS NOTED

- SIDEWALKS**
1. ALL SIDEWALKS SHALL BE CONSTRUCTED OF PORTLAND CEMENT CONCRETE WITH A COMPRESSIVE STRENGTH OF 2500 P.S.I. IN TWENTY-EIGHT DAYS AND A MIN. THICKNESS OF FIVE INCHES.
  2. ALL SIDEWALKS TO HAVE A WIDTH OF FIVE FEET AND SHALL BE CONSTRUCTED AS PER THE LOCATION SHOWN ON THIS PLAN.
  3. ALL SIDEWALKS SHALL BE SCORED TO A DEPTH OF 3/4" AT FOUR FOOT INTERVALS WITH EXPANSION JOINTS PLACED AT TWENTY FOOT INTERVALS.
  4. EXPANSION JOINTS SHALL BE CONSTRUCTED OF 1/2" THICK PRE-CAST EXPANSION MATERIAL WITH ALL CORNERS TO BE FORMED BY EXPANSION JOINTS.
  5. ANY SIDEWALK OR ACCESSIBLE ROUTE THAT IS NOT AT A LEVEL ELEVATION AT ITS INTERSECTION WITH A DRIVEWAY OR STREET WILL BE REQUIRED TO INSTALL A CURB RAMP AT A MAX. SLOPE OF 1:12 WITH A MAX. RISE OF 30" AND A MIN. LEVEL STRAIGHT CURB SEGMENT OF 48".
  6. THE TEXTURE OF THE DRIVEWAY AND INTERSECTION HANDICAP RAMPS SHALL BE CONSTRUCTED OF A NON-SLIP SURFACE. ACCOMPANIED BY "BROOMING" THE RAMP SURFACE AND GROOVING ONE INCH SPACING AT RIGHT ANGLE DIRECTIONS. GROOVES TO BE APPROXIMATELY 1/4" x 1/8" INCH WIDE.
  7. SIDEWALK SHALL BE SLOPED 1" TOWARDS THE STREET.
  8. CONTRACTOR SHALL CONTACT THE DEPARTMENT OF ENGINEERING PRIOR TO ANY WORK DONE WITHIN THE COUNTY OR CITY RIGHT OF WAY OR SERVITUDE.

- PARKING LOT**
1. ALL DRIVEWAYS BETWEEN STREET AND PROPERTY LINE SHALL BE CONSTRUCTED OF PORTLAND CEMENT CONCRETE WITH A COMPRESSIVE STRENGTH OF 4000 P.S.I. IN TWENTY-EIGHT DAYS AND A MIN. THICKNESS OF SIX INCHES.
  2. ALL DRIVEWAYS BETWEEN STREET AND PROPERTY LINE CONNECTING WITH AN EXISTING ROADWAY TO BE CONSTRUCTED IN ACCORDANCE WITH DETAIL AS SHOWN ON THIS PLAN.
  3. EXACT LOCATIONS OF ROADWAY AND DRIVEWAY CURBING WILL BE DETERMINED IN THE FIELD BY A REPRESENTATIVE OF THE DEPARTMENT OF ENGINEERING.
  4. CONTRACTOR SHALL CONTACT THE DEPARTMENT OF ENGINEERING PRIOR TO THE FORMING OF THE DRIVEWAYS CONNECTING TO THE ROADWAY.

- DRIVEWAYS**
1. PARKING SPACES TO BE DESIGNATED BY BLUE STRIPING & EITHER A BLUE SYMBOL ON A WHITE BACKGROUND OR A WHITE SYMBOL ON A BLUE BACKGROUND. HANDICAP PARKING SPACES SHALL REQUIRE THE INSTALLATION OF THE PROPER SYMBOL.
  2. ALL WHEEL STOPS AND CONCRETE CURBS SHALL BE CONSTRUCTED IN ACCORDANCE WITH THE DETAIL SHOWN ON THIS PLAN.
  3. ALL PARKING SPACES TO BE LAID OUT AS SHOWN ON THIS PLAN UNLESS OTHERWISE INDICATED.

- TRAFFIC CONTROLS**
1. ANY WORK IN THE ROADWAY OR ADJACENT TO THE ROADWAY CAUSING AN INTERFERENCE TO VEHICULAR TRAFFIC REQUIRES PRIOR NOTIFICATION TO THE COUNTY OR CITY TRAFFIC ENGINEERING DIVISION AND COMPLIANCE WITH THE REQUIREMENTS OF THE UNIFORM MANUAL ON SIGNALING AND CONTROL DEVICES OF HIGHWAYS AND STREETS. ALL NECESSARY TRAFFIC SIGNS AND/OR BARRICADES AND MAINTAIN THEM DURING CONSTRUCTION ACTIVITY.

- NOTES:**
- 1) FIELD VERIFY ALL ELEVATIONS PRIOR TO CONSTRUCTION.
  - 2) DRAIN PIPE & FITTINGS SHALL BE POLYVINYL CHLORIDE PLASTIC PIPE MEETING CLASS A-2000 PVC.
  - 3) ELEVATIONS SHOWN ARE M.S.L.
  - 4) MUCH OUT 24" DEEP FOR FOUNDATION PAD MINIMUM, OR TO UNDISTURBED SOIL CAPABLE OF 1500 PSF BEARING.

- LEGEND**
- PROPERTY LINE
  - SETBACK LINE
  - NEW BUILDING
  - EXISTING CURB
  - NEW CURB
  - CONTROL JOINT
  - SLOPE LINE
  - 12" DRAIN LINE
  - SHEET PILE BULKHEAD
  - HANDICAPPED PARKING
  - CATCH BASIN W/ TEMPERATURE PROTECTION
  - EXISTING ELEVATIONS
  - TOP OF GRATE
  - INVERT ELEVATION
  - NEW ELEVATION
  - DIRECTIONAL FLOW

- DETAIL 2**
- 

**LA QUINTA INN & SUITES**

**DAMMON ENGINEERING, INC.**

1095 FLORIDA AVENUE 985-649-5832 SLIDELL, LA. 70458  
DAMMONENGINEERING.COM

**PAVING & DRAINAGE PLAN**

DR. EDUARDO HERNANDEZ  
CEDAR LAKE ROAD  
BILOXI, MISSISSIPPI

SCALE: AS NOTED

FILE: \_\_\_\_\_

JOB NO. 1694

DATE: 11-01-05

SHEET **C-3** OF \_\_\_\_\_