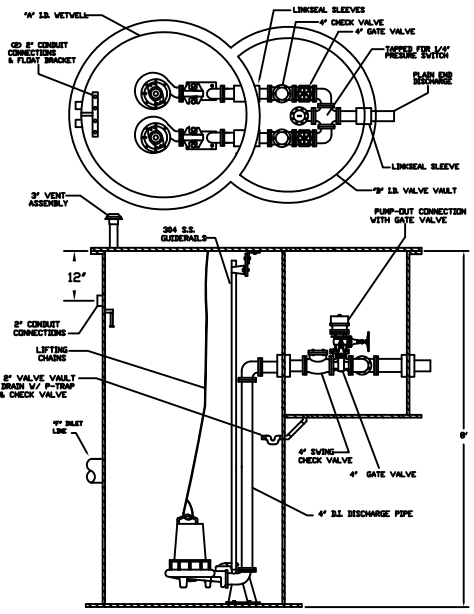
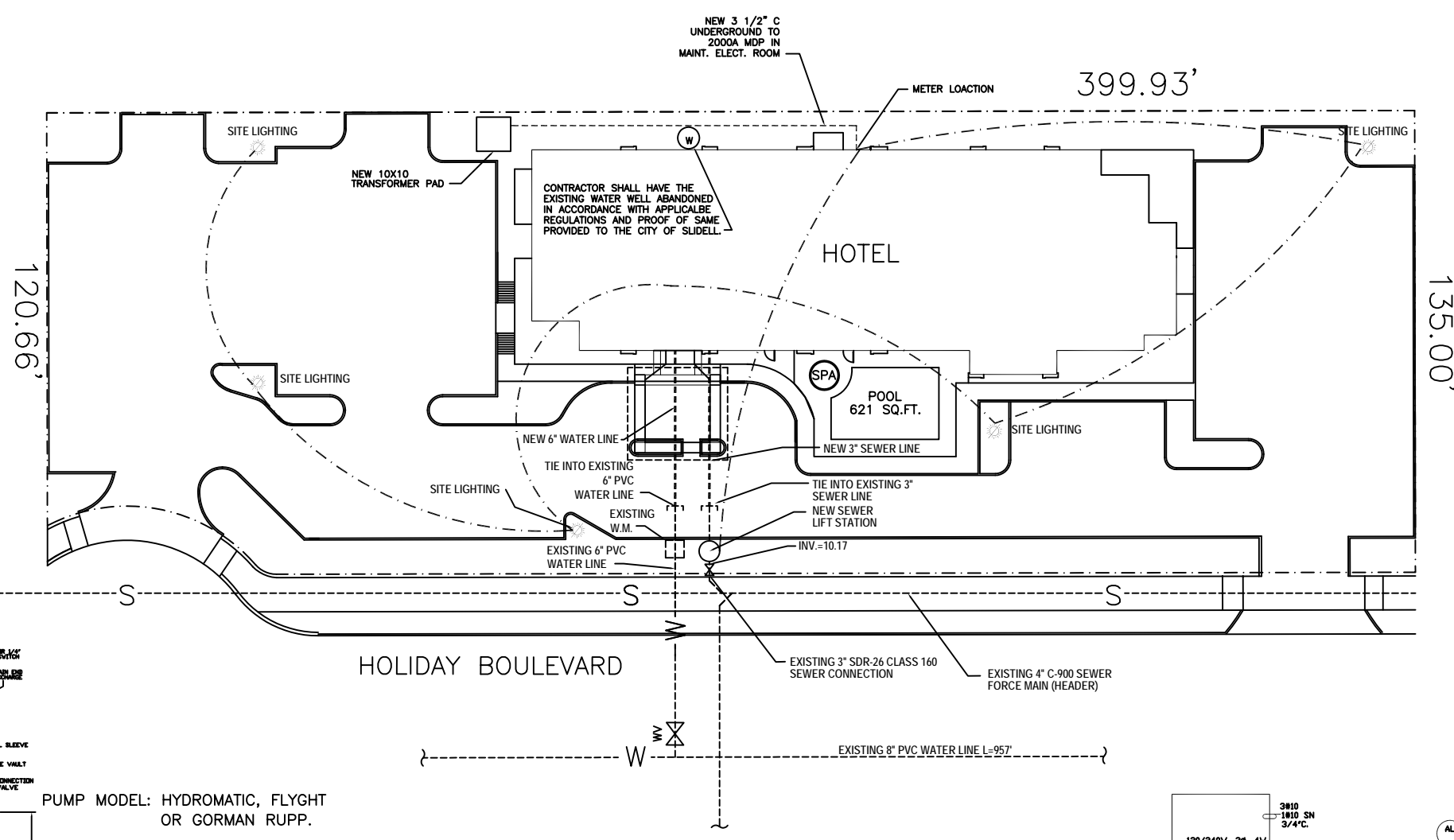
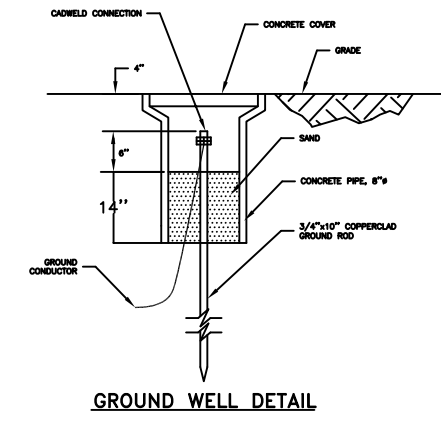


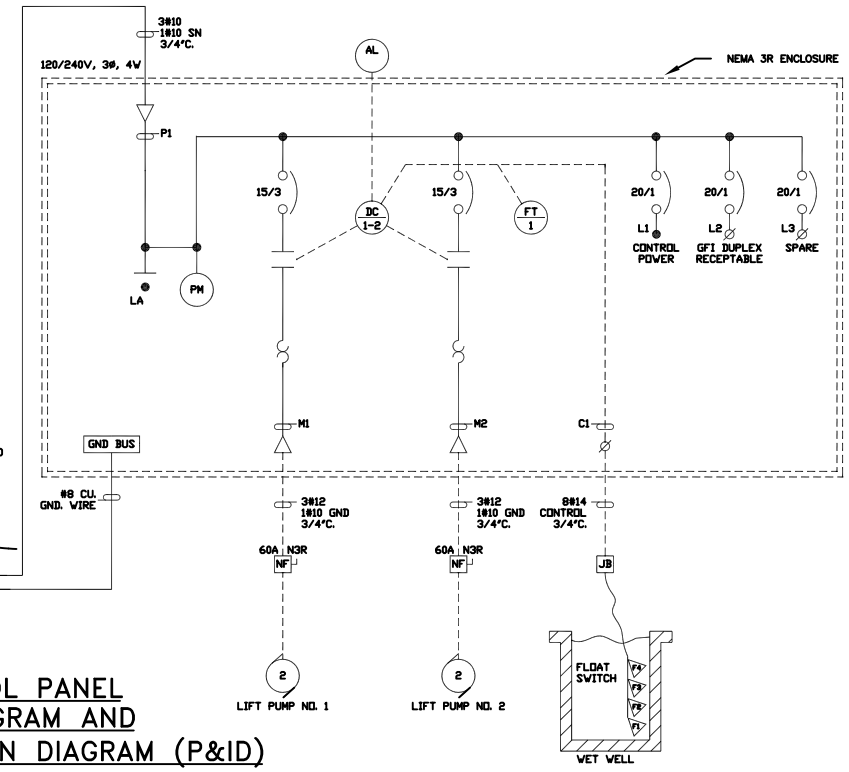
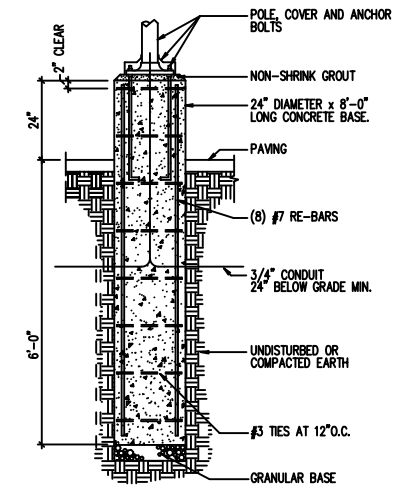
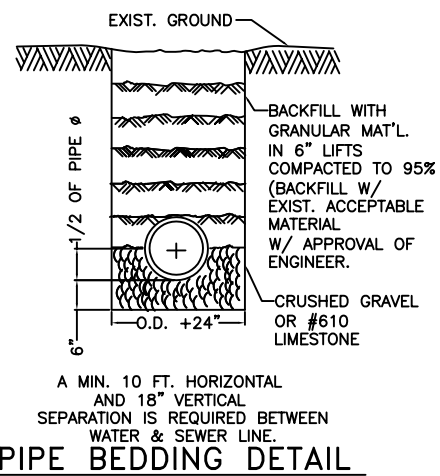
**UTILITIES NOTE: ALL UTILITIES SHALL BE PLACED UNDERGROUND. ALL UTILITIES ARE DRAWN DIAGRAMMATICALLY.**

**SITE LIGHTING**  
 EXTERIOR LIGHTING SHALL BE SHADED OR INWARDLY DIRECTED IN SUCH A MANNER SO THAT NO DIRECT LIGHTING OR GLARE BE CAST BEYOND THE PROPERTY LINE. THE INTENSITY OF SUCH LIGHTING SHALL NOT EXCEED ONE FOOT CANDLE AS MEASURED AT THE ABUTTING PROPERTY LINE. (N/A)



PUMP MODEL: HYDRAMATIC, FLYGT OR GORMAN RUPP.

NOTE: LIFT STATION SHALL BE PRIVATELY OWNED AND MAINTAINED BY OWNERS.



REVISED 6-14-07  
 6-21-07

UTILITY PLAN  
 LA QUINTA INN & SUITES #12  
 HOLIDAY BOULEVARD  
 SLIDELL, LOUISIANA

LA QUINTA INN & SUITES #12  
**DAMMON ENGINEERING, INC.**  
 1095 FLORIDA AVENUE 985-649-5932 SLIDELL, LA. 70458  
 DAMMONENGINEERING.COM

SCALE: 1"=20'

FILE:

JOB NO. 1828

DATE: 2-15-07

SHEET 4

C-3

OF 33