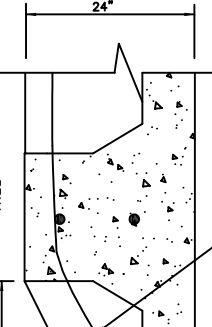
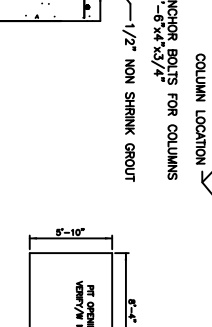
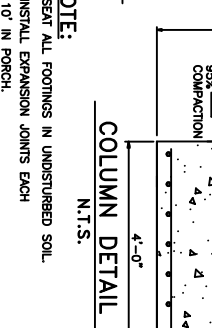
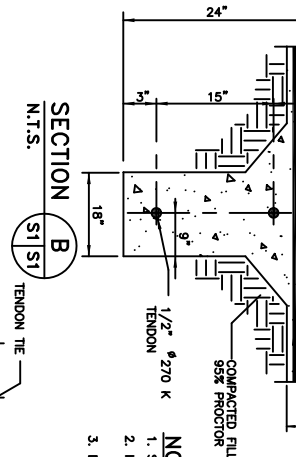
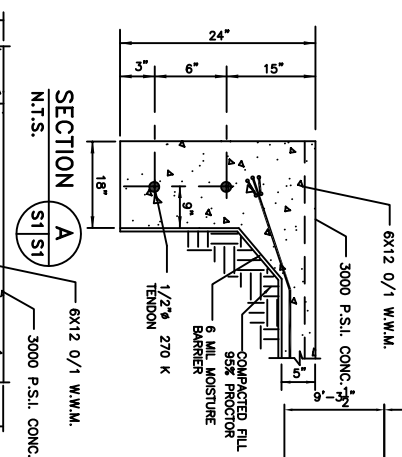


NOTE:
 MUCK OUT 24" DEEP MINIMUM FOR FOUNDATION PAD. UNDISTURBED SOIL CAPABLE OF 1500 P.S.I. BEARING.



FOUNDATION PLAN
 SCALE: 1/8"=1'-0"

FOUNDATION GENERAL NOTES:

1. THE INTENT OF THIS PLAN IS TO PROVIDE INFORMATION FOR PLACEMENT OF POST TENSION SYSTEM TENDONS AND (WHERE SHOWN) PILING, ONLY. IT IS THE RESPONSIBILITY OF THE GENERAL CONTRACTOR TO VERIFY ALL DIMENSIONS, BRICK LEGS, BLOCK OUTS, OFFSETS, ETC., SHOWN ON THESE PLANS, TO ASSURE AGREEMENT WITH ARCHITECTURAL PLANS.
2. FILL AS A MINIMUM QUALITY, SHALL BE 40% CLAY AND 60% SANDY MIXTURE. PLACED IN 6" LIFTS AND COMPACTED TO MINIMUM 95% STANDARD PROCTOR. FOOTINGS ARE DESIGNED TO USE WITH SOIL PRESSURES OF 2000 LB/FT² OR MORE PRIOR TO PILE DRIVING (WHERE PILES ARE REQUIRED). IT IS RECOMMENDED THAT OWNER VERIFY PILE SIZE AND CAPACITY BY CONTRACTING THE SERVICES OF A SOILS ENGINEERING COMPANY OR AS AN ALTERNATE, VERIFY PILE CAPACITY WITH A PILE LOAD TEST. IF NO SOILS ANALYSIS FOR THE PROPERTY HAS BEEN PROVIDED TO ENGINEER, CONTRACTOR MUST ADVISE OWNER THAT PILE LOAD CAPACITIES USED ARE BASED ON LOCAL CODES AND HISTORICAL INFORMATION WHERE AVAILABLE, AND THAT THE SOILS DATA FOR THE SPECIFIC PROJECT AREA MAY NOT BE COMMENSURATE WITH THESE DATA. CONTRACTOR SHALL ARRANGE TO HAVE A VERIFIED COPY OF THE BLOW COUNT FOR DRIVING EACH PILE.
3. ALL WATER (RAIN, RISING WATER, ETC.) SHALL BE DIRECTED AWAY FROM THE SLAB DURING PREPARATION, PLACING AND CURING OF SLAB. POSITIVE DRAINAGE MUST BE MAINTAINED AT ALL TIMES.
4. BEAM SIZES AND LOCATION AND NUMBER OF PILES SHALL NOT BE CHANGED WITHOUT APPROVAL OF THE ENGINEER, EXCEPT THAT BEAM DEPTH MAY BE EXTENDED TO REACH UNDISTURBED SOIL. SPECIAL LOADS NOT INDICATED ON DRAWING I.E., BRICK FIREPLACES, AND/OR CHIMNEYS, HOT TUBS ETC., REQUIRE ADDITIONAL REINFORCEMENT.
5. IT IS RECOMMENDED THAT A CURING COMPOUND BE USED TO CONTROL SHRINKAGE. AS A MINIMUM, INSTALLATION OF RIGID FLOOR TILES, BRICK, ETC., SHALL BE OVER AN ELASTIC BOND BREAKER. ANY CRACKS IN CONCRETE FLOOR SHALL BE TREATED FOR CERAMIC FLOOR TILES. WHERE DECORATIVE CONCRETE IS USED, ADDITIONAL REINFORCEMENT WILL BE REQUIRED.
6. WHERE ADDITIONAL REINFORCEMENT WITH REBAR IS USED IN FOOTINGS, IT SHALL CONFORM TO ASTM A615. WOVEN WIRE FABRICS SHALL CONFORM TO ASTM A185.
7. TENDON AND BARS SHALL BE SECURELY SUPPORTED TO PREVENT BOTH VERTICAL AND HORIZONTAL MOVEMENT DURING PLACEMENT OF CONCRETE. ALLOW 8" CENTERED CLEARANCE ON TENDON AXIS BY 36" LENGTH FOR STRESSING EQUIPMENT CLEARANCE.
8. CONCRETE SHALL BE WELL CONSOLIDATED ESPECIALLY IN THE VICINITY OF TENDON ANCHORS.
9. CONCRETE DESIGN IS BASED UPON A CONCRETE MIX HAVING A MINIMUM OF 5 SACKS OF CEMENT PER CUBIC YARD AND A MAXIMUM OF 30 GALLONS OF FREE AND ADDED WATER PER CUBIC YARD. SUCH A MIX SHOULD GIVE A MINIMUM COMPRESSIVE STRENGTH OF 3,000 PSI AT 28 DAYS. CONCRETE DESIGN MIX SHALL BE IN ACCORDANCE WITH THE ACI BUILDING CODE REQUIREMENTS (ACI 318R-89)
10. CONCRETE TO HAVE A MINIMUM COMPRESSIVE STRENGTH OF 1,500 PSI AT THE TIME OF STRESSING.
11. ALL CONVENTIONAL REINFORCING STEEL SHALL BE ASTM DESIGNATION A-615 (GRADE 60) REINFORCING AND SHALL BE DETAIL AND ACCESSORIES PROVIDED IN ACCORDANCE WITH THE LATEST ACI MANUAL OF STANDARD PRACTICE FOR DETAILING REINFORCED CONCRETE STRUCTURES.
12. ALL PRE-STRESSING STEEL SHALL CONSIST OF SEVEN-WIRE STRESS RELIEVED STRAND CONFORMING TO ASTM A-416. MINIMUM ULTIMATE TENSILE STRENGTH SHALL BE 270,000 PSI. STRANDS SHALL BE COATED WITH A PERMANENT RUST PREVENTATIVE LUBRICANT AND A PLASTIC SHEATH.
13. REINFORCEMENT SHALL HAVE 3" COVER IN GRADE BEAM BOTTOMS, 2" COVER IN BEAM SIDES AND TOPS AND 1 1/2" COVER IN SLAB TOPS AND BOTTOMS UNLESS OTHERWISE SHOWN.
14. COORDINATE STRUCTURAL DRAWINGS WITH ARCHITECTURAL AND MECHANICAL DRAWINGS FOR ALL OPENINGS, INSERTS, AND ANY OTHER RELATED ITEMS.
15. PLANS FOR PIPES, CONDUIT, THIMBLES, ETC. TO PASS THROUGH CONCRETE SLAB OR BEAM MUST NOT CONFLICT WITH REINFORCING. WHERE A CONFLICT OCCURS, PIPES, CONDUIT, ETC. ARE TO TAKE PRECEDENCE.
16. PROVIDE A SINGLE LAYER OF VAPOR BARRIER UNDER CONCRETE SLAB.
17. THE TENDON LOCATION AT THE END OF THE GRADE BEAM IS TO BE (A) MINIMUM OF 6" FROM THE TOP OF THE SLAB TO CENTER OF GRAVITY OF TENDONS.
18. TENDONS TO BE STRESSED NO EARLIER THAN 7 DAYS AND NO LATER THAN 14 DAYS AFTER PLACEMENT OF CONCRETE.
19. FORMS TO BE STRIPPED NO LATER THAN 7 DAYS AFTER PLACEMENT OF CONCRETE.
20. STRESSING:
 1. 1/2" TENDON SHALL BE ANCHORED AT 28.9K PER STRAND, BUT SHALL BE INITIALLY STRESSED TO 33.0K PER STRAND.
 2. 3/8" TENDON SHALL BE ANCHORED AT 16.1K PER STRAND.
21. LOADING OF SLAB PRIOR TO STRESSING SHALL NOT BE DONE WITHOUT THE APPROVAL AND DIRECTION OF THE ENGINEER.

LA QUINTA INN & SUITES #12
DAMMON ENGINEERING, INC.
 ARCHITECTS - ENGINEERS
 1095 FLORIDA AVENUE 985-649-5832 SLIDELL, LA. 70458
 DAMMONENGINEERING.COM

FOUNDATION PLAN
 LA QUINTA INN & SUITES #12
 HOLIDAY BOULEVARD
 SLIDELL, LOUISIANA

SCALE: AS NOTED
 FILE:
 JOB NO. 1828
 DATE: 2-15-07
 SHEET 8
 S-1
 OF 33