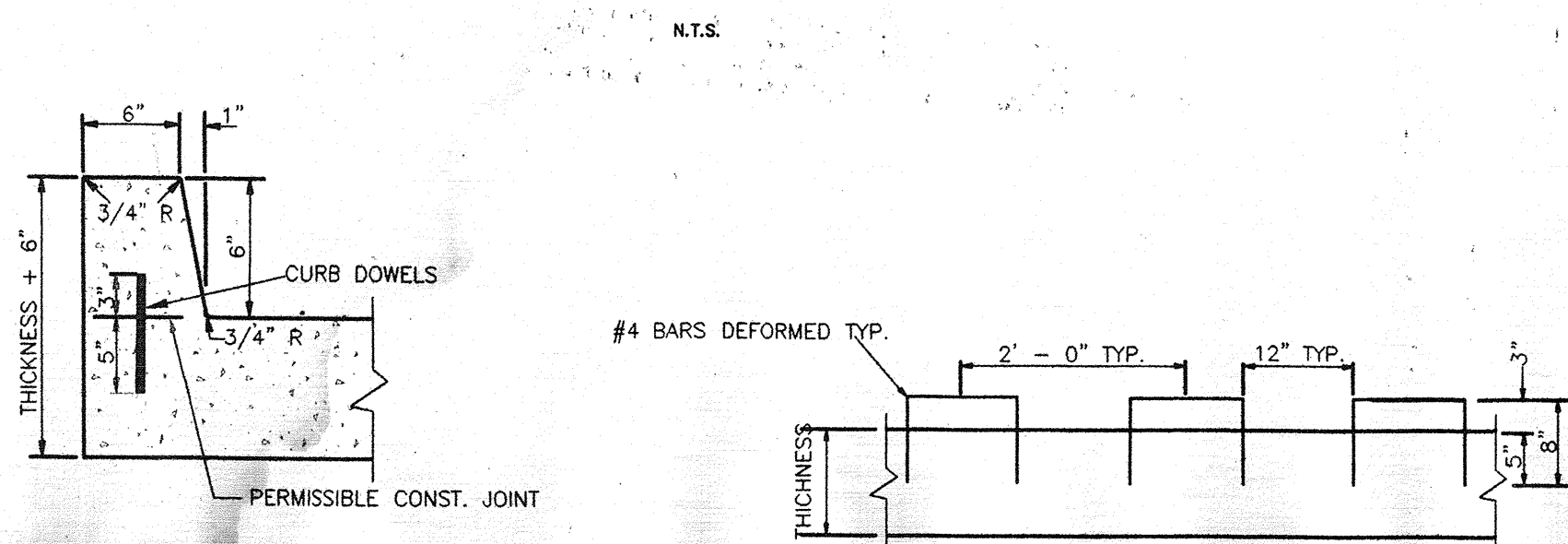
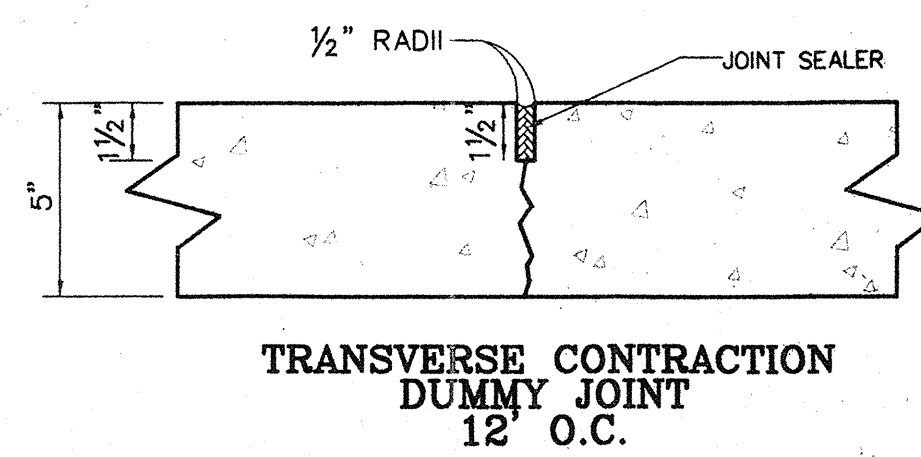


DRIVEWAY CONNECTION TO EXISTING INTEGRAL CURB (SOUTH CLAIBORNE AVE.)

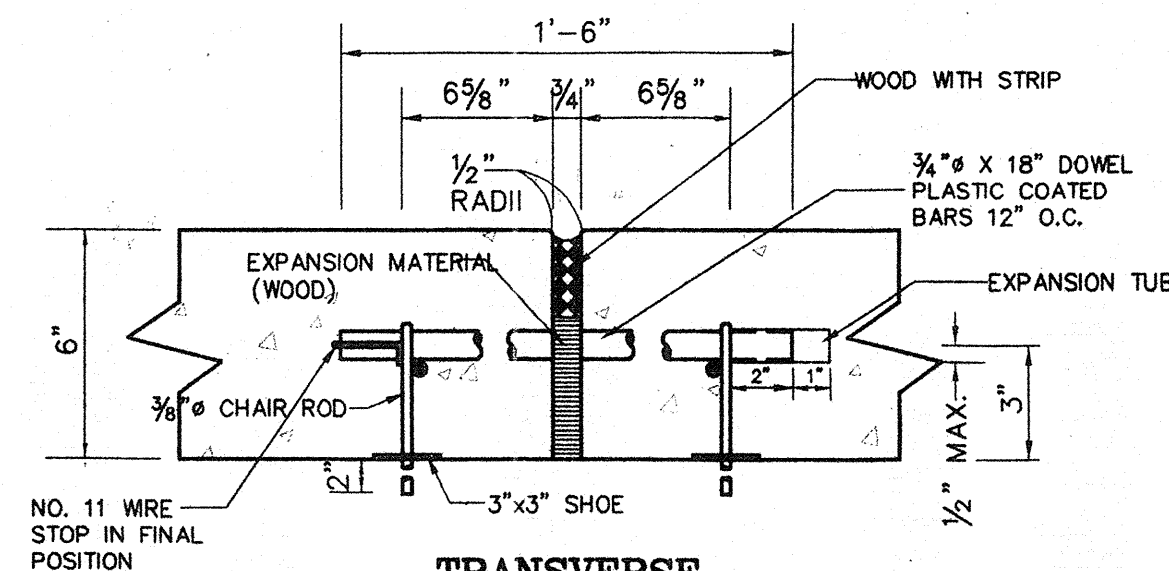


6" BARRIER TYPE CONCRETE CURB

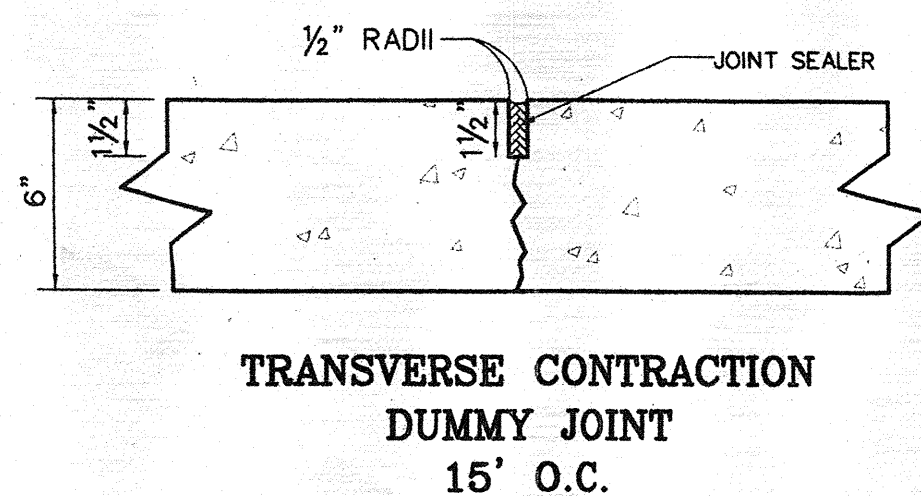
CURB DOWELS



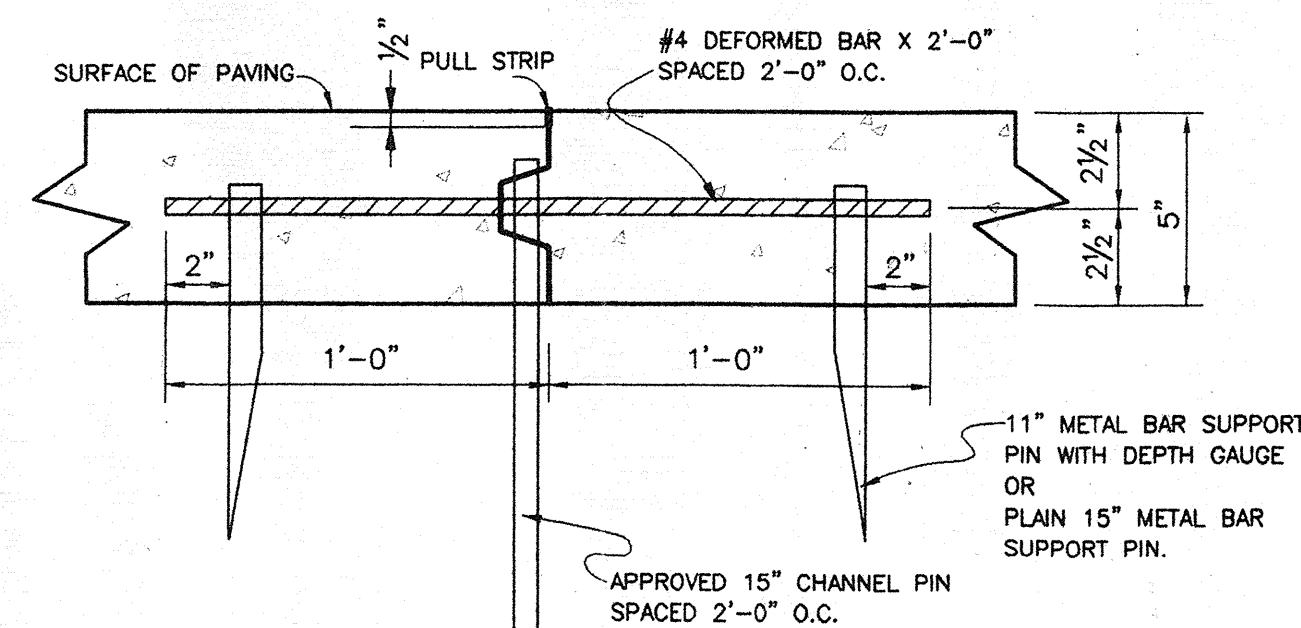
TRANSVERSE CONTRACTION DUMMY JOINT 12' O.C.



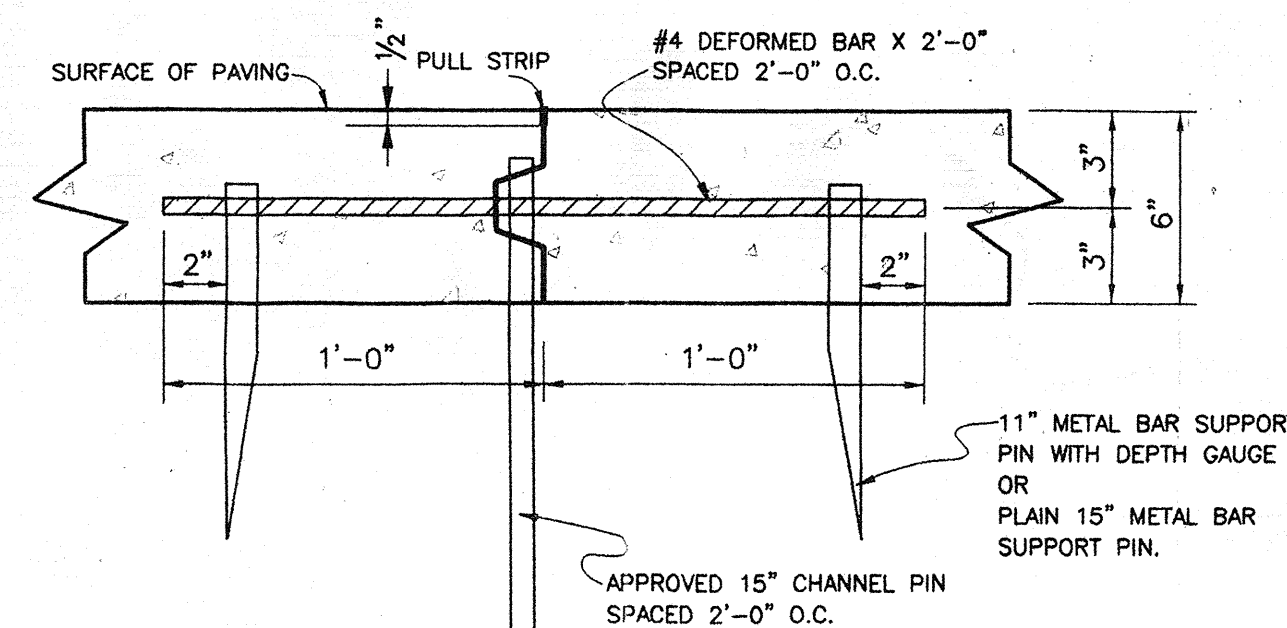
TRANSVERSE EXPANSION JOINT WITH RACK ASSEMBLY



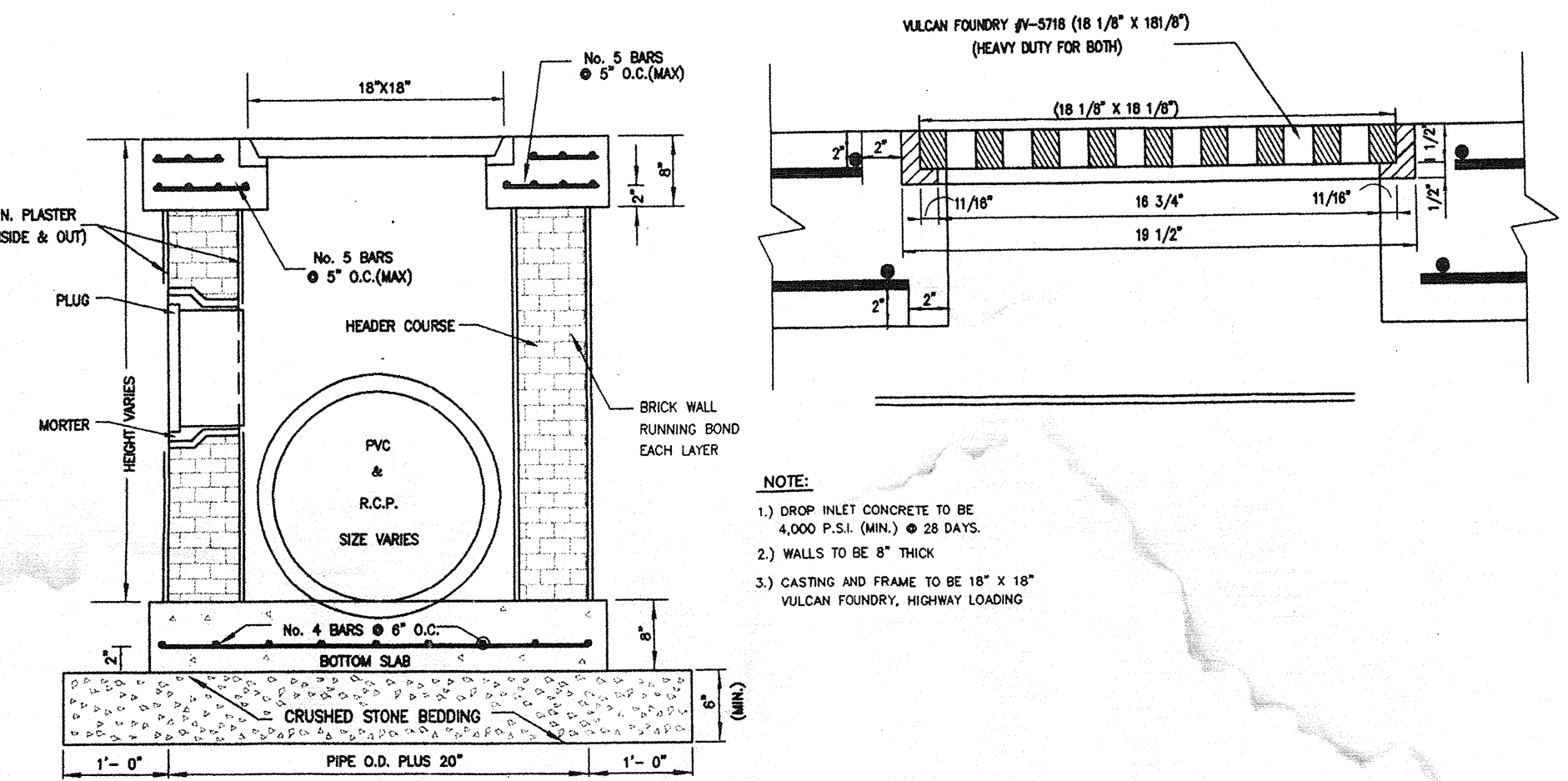
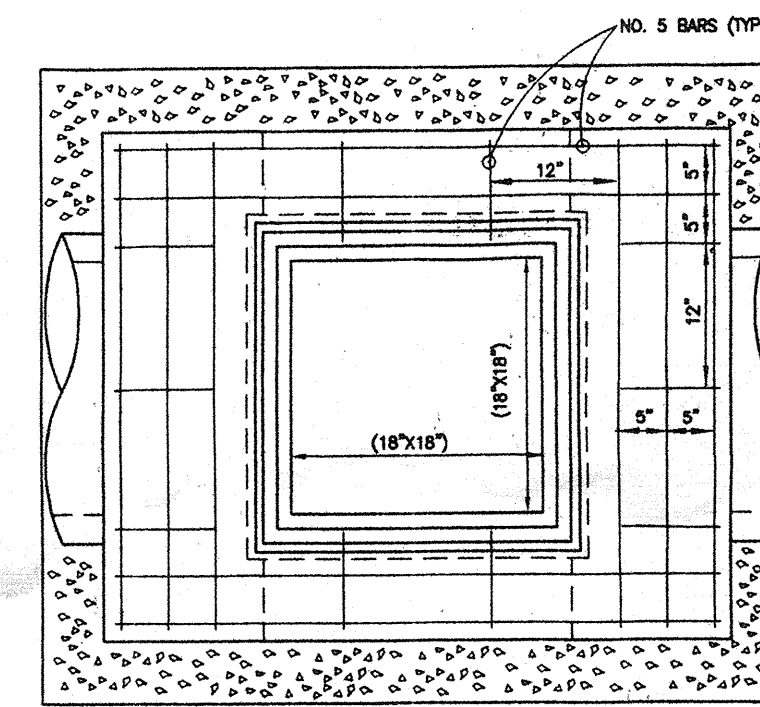
TRANSVERSE CONTRACTION DUMMY JOINT 15' O.C.



LONGITUDINAL CONTRACTION JOINT WITH KEYWAY 12' O.C. AND DOWEL BARS @ 2' O.C.



LONGITUDINAL CONTRACTION JOINT WITH KEYWAY 15' O.C. AND DOWEL BARS @ 2' O.C.

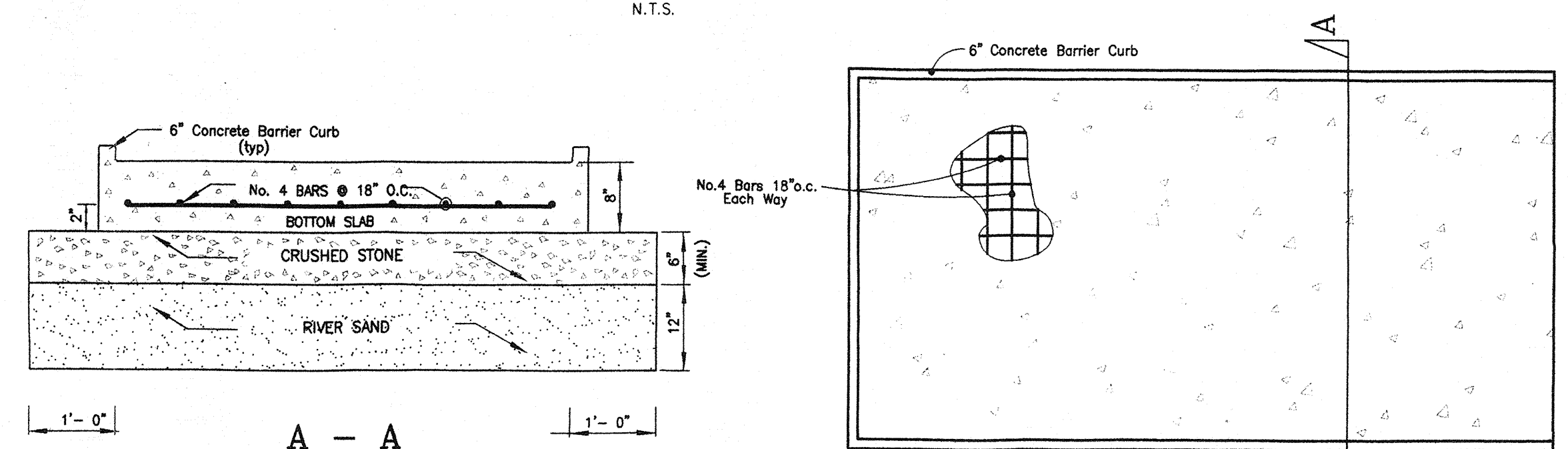


GENERAL NOTES:

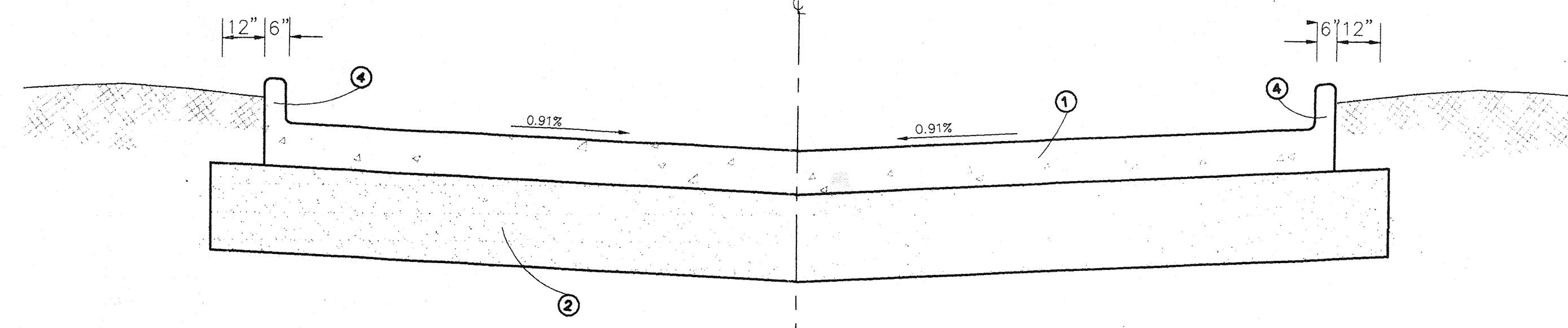
1. THE CONTRACTOR SHALL BE FULLY RESPONSIBLE FOR THE DEMOLITION AND LEGAL DISPOSITION OF EXISTING ON SITE FACILITIES ABOVE AND UNDERGROUND. THE CONTRACTOR IS RESPONSIBLE FOR THE REMOVAL FROM THE SITE OF ALL DEMOLISHED MATERIALS. THE FILLING OF ALL DEPRESSIONS CAUSED BY DEMOLITION AND GRADING OF THESE AREAS SO AS NOT TO BE OBJECTIONABLE TO VIEW. THE CONTRACTOR SHALL OBSERVE ALL REQUIRED SAFETY PRECAUTIONS IN THE PERFORMANCE OF HIS WORK.
2. DIMENSIONS, BUILDING LOCATION AND GRADING OF THIS SITE ARE BASED ON AVAILABLE INFORMATION AT TIME OF LAYOUT. DEVIATIONS MAY BE NECESSARY IN THE FIELD. ANY SUCH CHANGES OR CONFLICTS BETWEEN THIS PLAN AND FIELD CONDITIONS ARE TO BE REPORTED TO THE OWNER PRIOR TO STARTING CONSTRUCTION.
3. ALL CONSTRUCTION OF UTILITIES TO BE IN ACCORDANCE WITH LOCAL BUILDING CODES.
4. ELECTRIC SERVICE AND TELEPHONE SERVICE TO BE UNDERGROUND THROUGHOUT SITE IF ALLOWED BY LOCAL CODES AND REGULATIONS.

5. LOCATION OF UNDERGROUND UTILITIES, EXISTING OR PROPOSED, ARE APPROXIMATE OR SCHEMATIC. LOCATION OF EXISTING UTILITIES MUST BE VERIFIED IN THE FIELD PRIOR TO ANY CONSTRUCTION.
6. DRAINAGE STRUCTURES TO BE CONSTRUCTED OF 4,000 PSI CONCRETE.
7. ALL WORK TO BE PERFORMED THAT IS NOT COVERED BY THESE PLANS SHALL BE CONSTRUCTED IN ACCORDANCE WITH APPLICABLE STATE, COUNTY, OR LOCAL CODES. ALL WORK IN PUBLIC RIGHT-OF-WAYS SHALL BE IN ACCORDANCE WITH ALL STATE AND LOCAL REQUIREMENTS AND STANDARDS.
8. ALL REQUIRED DROP INLETS TO BE 18"x18" UNLESS OTHERWISE INDICATED ON THE PLAN.
9. FOR ALL INFORMATION ON EXISTING FEATURES, SERVITUDES, PROPERTY LINES, UTILITIES AND ECT. SEE SURVEY.

DROP INLET DETAILS



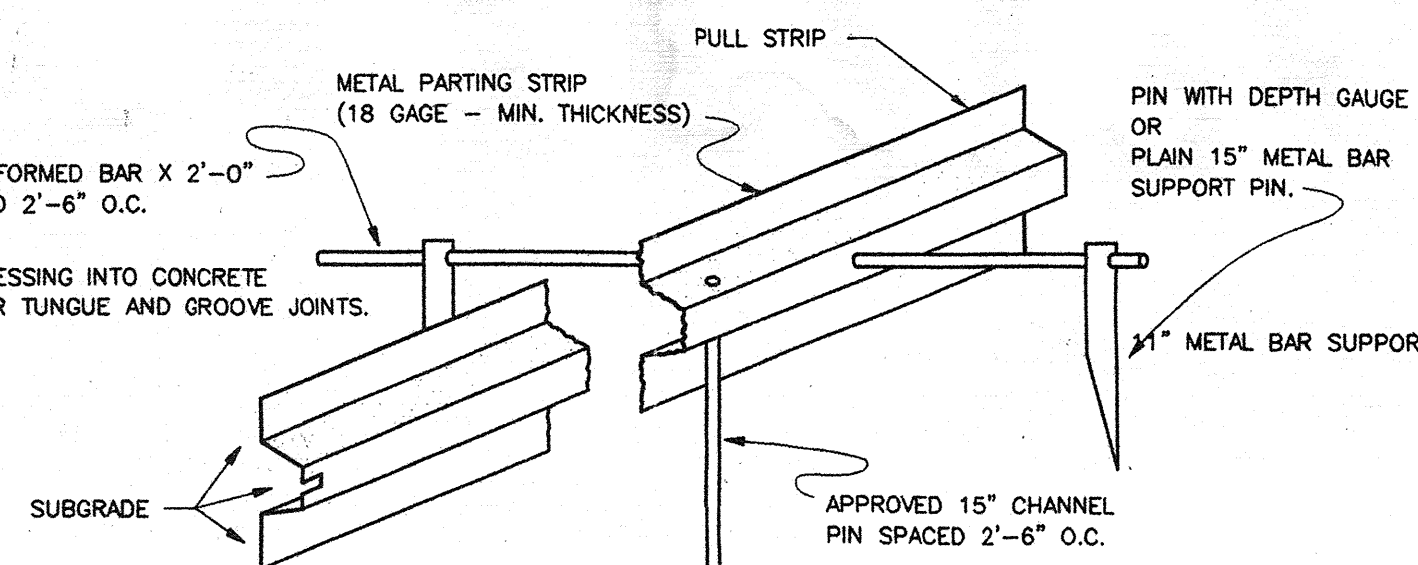
CONCRETE DUMPSTER PAD



- ① NON-REINFORCED PORTLAND CEMENT CONCRETE (6" THICK)
- ② STRUCTURAL FILL 12" THICK (AS DESCRIBED IN THE GEOTECHNICAL REPORT)
- ③ INTEGRAL/DOWELED 6" CONCRETE BARRIER CURB

PARKING AREA SECTION

NOTE: RIBBON JOINTS FORMED BY PRESSING INTO CONCRETE IMPREGNATED FIBER STRIPS, OR TONGUE AND GROOVE JOINTS.

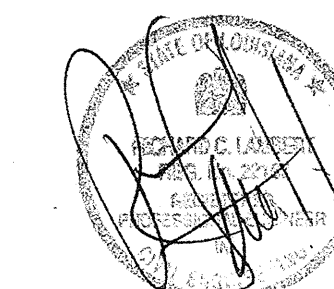


OBLIQUE VIEW METAL PARTING STRIP FOR DEFORMED LONGITUDINAL JOINT

RICHARD C. LAMBERT
CONSULTANTS, LLC

ONE GALLERIA BLVD., SUITE 1718
METAIRIE, LA. 70001

521 N. CAUSEWAY BLVD.
MANDEVILLE, LA. 70448



HAMPTON INN
MISCELLANEOUS DETAILS

ST. TAMMANY, LOUISIANA

DATE: 12-5-00 DESIGNED BY: R/JL DRAWN BY: JBR JOB NO. 99-37 DRAWING NO. C-5
SCALE: 1" = 20' CHECKED BY: R/JL

DATE	DESCRIPTION	REVISED