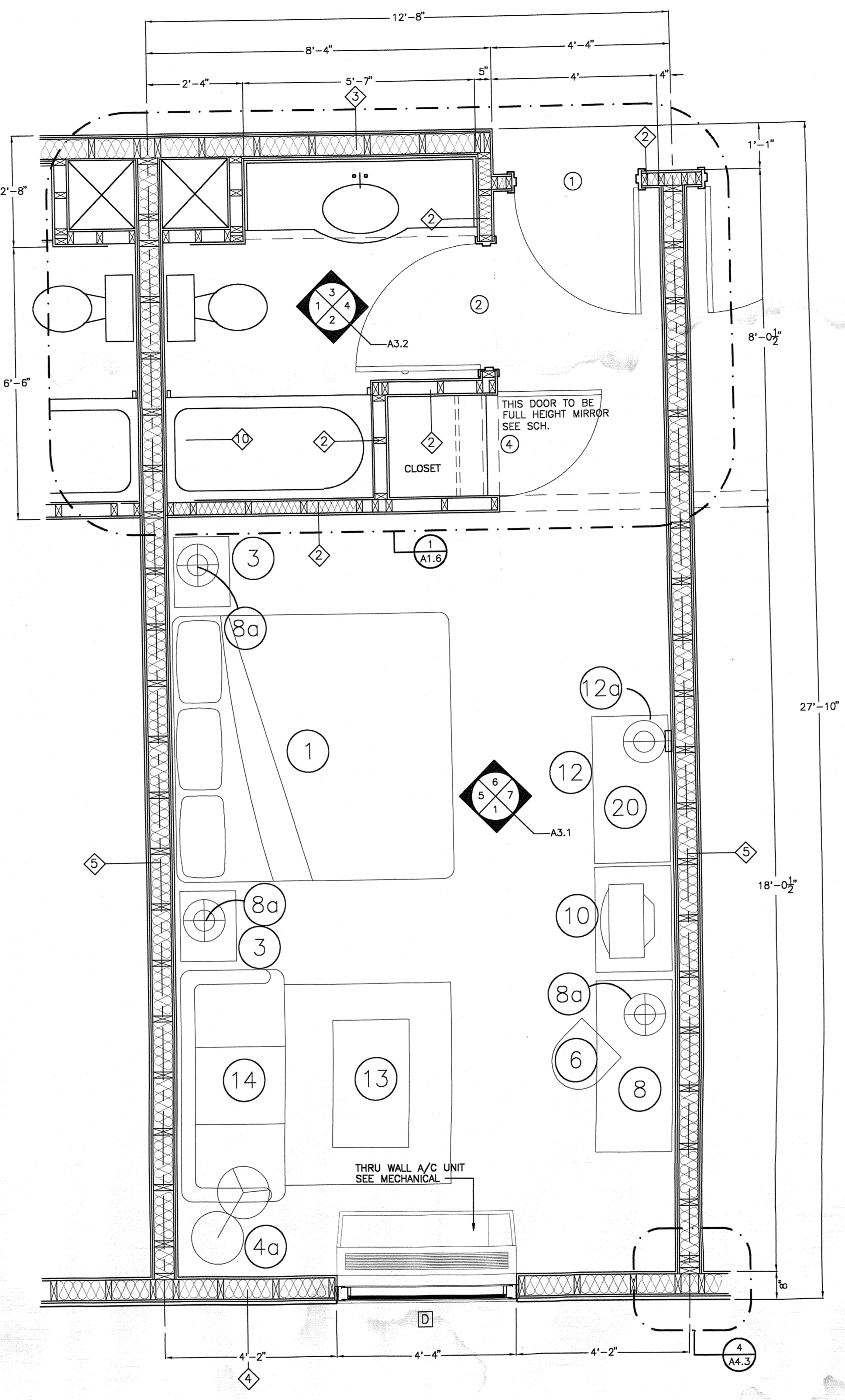
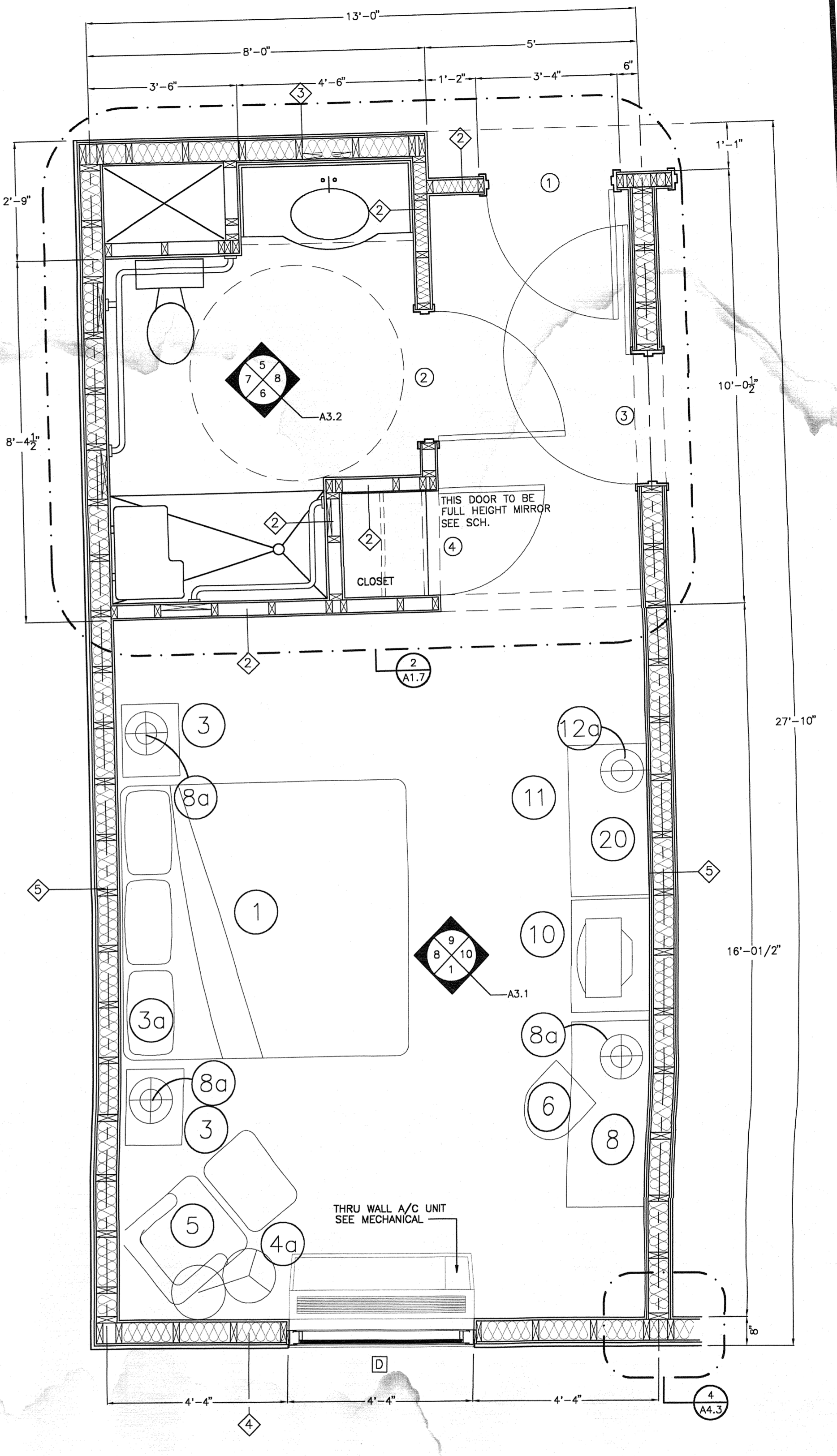


1 ENLARGED TYPICAL SUITE (D/Q)
SCALE: 1/2" = 1'-0"



2 ENLARGED TYPICAL SUITE (KING)
SCALE: 1/2" = 1'-0"



3 ENLARGED TYPICAL H.C. SUITE
SCALE: 1/2" = 1'-0"

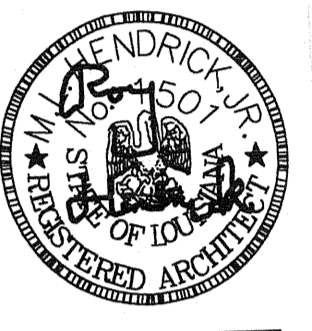
ACCESSIBLE ROOM NOTES:
1. ACCESSIBLE DOUBLE/QUEEN ROOM BEDS MUST BE 36" APART AND HAVE 18" BETWEEN BED AND BATH WALL.
2. EASY CHAIR @ ACCESSIBLE DOUBLE/QUEEN TO BE RELOCATED TO T.V. WALL AND THE OTTOMAN SHALL BE ELIMINATED.

SYMBOL LEGEND	
①	DOOR MARK, REFER TO SCH. A3.0
Ⓐ	WINDOW MARK, REFER TO SCH. A3.0
100	ROOM NUMBER, REFER TO SCH. A2.4
◇	WALL TYPE MARK, REFER TO SCH. A2.4
1/2	SECTION/ELEVATION MARK 1 - DETAIL # A1.0 - SHEET #
1/2	ENLARGED PLAN MARK 1 - DETAIL # A1.0 - SHEET #

FURNISHINGS LEGEND					
1	KING BED - HEAD BOARD - 80"W x 16-1/2"H x 1-1/2"D	4a	LAMP - FLOOR - PLUG WIRED	8a	LAMP - DESK - PLUG WIRED
2	DOUBLE BED - HEAD BOARD - 56"W x 15-1/2"H x 1-1/2"D	5	RECLINER OR LOUNGE CHAIR WITH OTTOMAN	9	WARDROBE
3	NIGHTSTAND 20"W x 24"H x 16"D	6	DESK CHAIR	10	TV ARMOIRE
3a	LAMP - WALL - PLUG WIRED	7	ACTIVITY TABLE - 30" DIAMETER	11	CHEST OF DRAWERS - 30"W x 30"H x 22"D
4	ACTIVITY CHAIR	8	DESK 48"W x 30"H x 22"D	12	LUGGAGE BENCH - 42"W x 18"H x 22"D
				12a	WALL MOUNTED LAMP
				13	COFFEE TABLE
				14	SOFA-SLEEPER
				15	VANITY FRONT
				16	VANITY TOP
				17	OCCASIONAL TABLE (18" DIAMETER MIN.)
				18	VANITY STOOL
				19	VANITY SHELF
				20	MIRROR - 18"W x 60"H x 3/16"D

SUB CONTRACTORS NOTES:
1. SUB CONTRACTOR TO INSTALL WALL BLOCKING FOR ALL INSTALLED EQUIPMENT AND FIXTURES.
2. SUB CONTRACTOR TO INSTALL APPROVED FIRE CAULKING AS REQUIRED.

ROY HENDRICK AIA ARCHITECT
5647 GALERIA DRIVE, SUITE H
BATON ROUGE, LOUISIANA 70816
(225)-293-6363



Hampton Inn
SIX G'S SUBDIVISION
COVINGTON, LOUISIANA

REVISIONS
REVISED
02-28-01
05-14-01

DATE
11-01-00

DRAWN BY

SHEET

A1