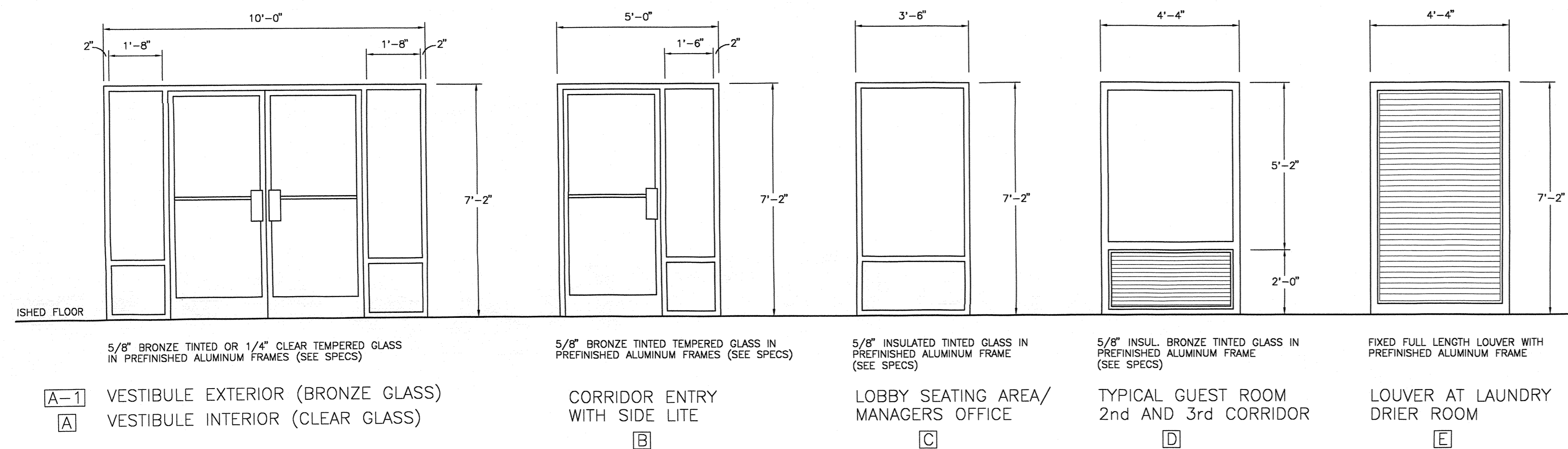


ROOM FINISH SCHEDULE																		
AREAS	BASE				FLOOR				WALLS				CEILING		CLG. HT.	REMARKS		
	CARPET	CERAMIC TILE	QUARRY TILE	WOOD-OAK	CARPET	CERAMIC TILE	QUARRY TILE	VINYL TILE	SEALED CONCRETE	PTD. TEXTURED GYP. BD.	VINYL WALL COVERING	PTD. GYP. BOARD	PTD. TEXTURED GYP. BD.	EXT. CLG. BD. PAINTED	LAY-IN ACOUSTICAL TILE			
	1	2	3	4	5	6	7	8	9	10	11	12	13	14	15	16	17	18
<b>GROUND FLOOR</b>																		
VESTIBULE		2				7					12			15			8'-0"	PROVIDE WALK OFF MATS IN THIS AREA
LOBBY			4			7					12			15		17	8'-0"	
SEATING			4			7					12			15			SEE 7A3,5	
CORRIDOR	1					6					12			15		17	8'-0"	
STAIR 1&2				5					10	11				15			N/A	
REGISTRATION	1					6					12			15		17	8'-0"	CARPET TO BE NON-STATIC W/ DOUBLE PADDING
PBX				5				9	11					15		17	8'-0"	
MANAGER	1					6				11				15		17	8'-0"	
WORK	1					6				11				15		17	8'-0"	
LAUNDRY				5				9	11					15			9'-0"	
LINEN STORAGE				5				9	11					15			9'-0"	
ELEVATOR EQUIP.				5				9	11			13		15			9'-0"	
VENDING	2					7					12			15		17	8'-0"	
ELECTRICAL				5				9	11		13			15		17	9'-0"	
WOMEN	2					7					12			15			9'-0"	
MEN	2					7					12			15			9'-0"	
EXERCISE	1					6					12			15			9'-0"	
PREP	2					7					12			15		17	9'-0"	LAY IN CLG. MUST BE VINYL FACED
EMPLOYEE BREAK				5				9	11					15			9'-0"	
EMPLOYEE BATHROOM				5				9	11					15			9'-0"	
STORAGE				5				9	11					15			9'-0"	
MAINTENANCE				5				9	11					15			9'-0"	
<b>TYPICAL FLOOR</b>																		
VENDING		2				7					12			15			9'-0"	
STORAGE				5				9	11					15			9'-0"	
ELEVATOR LOBBY		2				7					12			15			9'-0"	
CORRIDOR	1					6					12			15			9'-0"	
MECHANICAL				5				9			13			15			9'-0"	
HOT WATER HEATER RM.				5				9			13			15			9'-0"	
<b>TYPICAL SUITES</b>																		
TYPICAL GUEST ROOMS	1					6					11			15			9'-0"	
TYPICAL GUEST BATHROOMS		2				7					12			16			8'-0"	

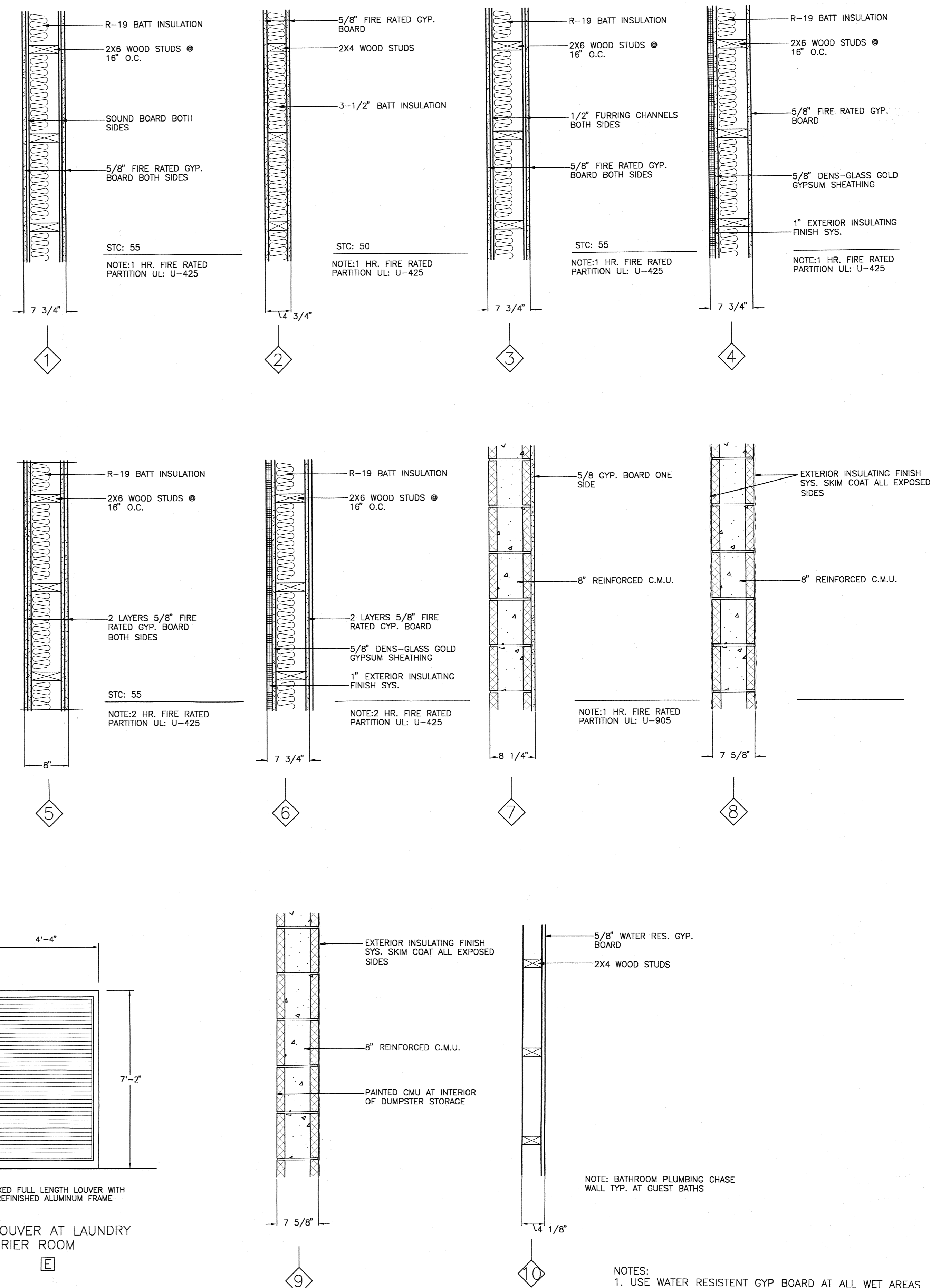
NOTE:  
CERAMIC TILE AT FOOT OF JACUZZI TUB MUST BE MIN. .67 C.O.F. (COEFFICIENT OF FRICTION)  
USE LATEX EPOXY GROUT FOR TILE AT JACUZZI TUB



# 1 WINDOW SCHEDULE

SCALE: 3/8" = 1'-0"

NOTE:  
ALL ALUMINUM FRAMES AND WINDOWS TO BE BRONZE FINISH  
TYPE "D" FRAME TO BE INTEGRAL BUILT FRAME AND LOUVER

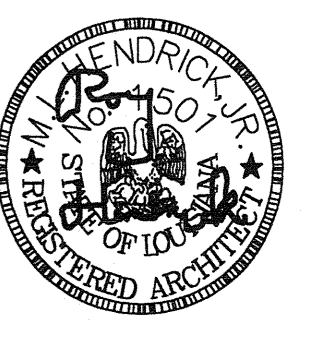


# 2 TYP. WALL TYPES

SCALE: 1/2" = 1'-0"

NOTES:  
1. USE WATER RESISTENT GYP BOARD AT ALL WET AREAS  
2. FIRE RATED TYPE "X" GYP BOARD SHALL BEAR THE CORRECT UNDERWRITERS LABORATORIES LABEL.  
3. EXTEND WALL UP TO UNDERSIDE OF FIRE RATED ASSEMBLY. PERIMETER SEALING AND BEDDING OF ELECTRICAL BOXES AND OUTLETS IS REQUIRED. GYP BD. JOINTS TO BE STAGGERED.  
4. ALL BATT INSULATION INSIDE INTERIOR WALLS SHALL HAVE A FLAME SPREAD RATING NOT GREATER THAN 75. INTERIOR FINISHES IN EXITWAYS AND CORRIDORS SHALL HAVE A FLAME SPREAD RATING NOT GREATER THAN 25. CARPET IN THESE AREAS SHALL HAVE A FLAME SPREAD RATING NOT GREATER THAN 75. SMOKE DEVELOPMENT FOR INSULATION, CARPET, AND FINISHES IN THESE AREAS SHALL NOT EXCEED 450.  
5. ALL PAINTED TEXTURED WALLS TO BE 100% ACRYLIC TEXTURE BY DURSYSYSTEM PREMIUM COATINGS(DS4000). VERIFY COLOR W/ OWNER.

ROY HENDRICK AIA ARCHITECT  
5647 GALERIA DRIVE, SUITE H  
BATON ROUGE, LOUISIANA 70816  
(225)-293-6363



Hampton Inn  
SIX G'S SUBDIVISION  
COVINGTON, LOUISIANA

REVISIONS  
REVISED  
02-28-01  
05-14-01

DATE  
11-01-00  
DRAWN BY  
SHEET

A2.9