

STANDING SEAM METAL ROOF OVER
30# FELT AND 3/4" PLYWOOD DECKING

PRE-ENGINEERED SCREEN TRUSSES BY
TRUSS MFG.

SEE 144.2 FOR MANSARD ROOF
DETAILS

1" E.I.F.S. FINISH OVER 5/8" DENS
GLASS SHEATHING

1 HOUR FIRE RATED ROOF CEILING
ASSEMBLY

1 HOUR FIRE RATED FLOOR CEILING
ASSEMBLY

CEILING ASSEMBLY STC:54

R-13 BATT INSULATION

2X6 STUD WALL TYPICAL AT EXTERIOR
WALLS SEE FLOORPLANS

DECORATIVE COLUMN BEYOND

BRONZE FINISH ALUMINUM WINDOW
FRAME TYP.

HVAC UNITS

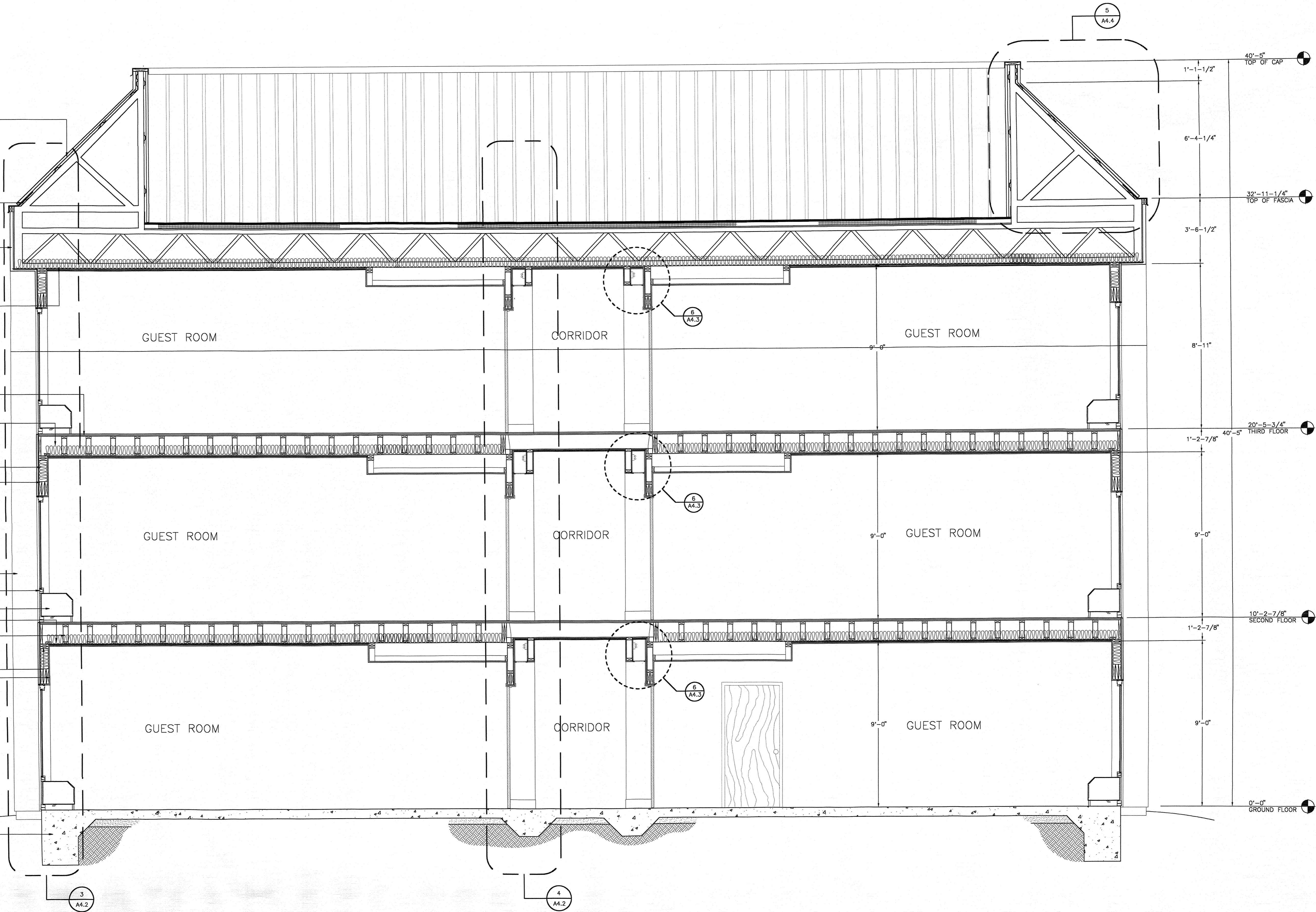
CEILING ASSEMBLY STC:54

PRE-ENGINEERED OPEN WEB FLOOR
JOISTS

DOUBLE 2X6 TOP PLATES TYP
5/8" FIRE RATED GYP BOARD

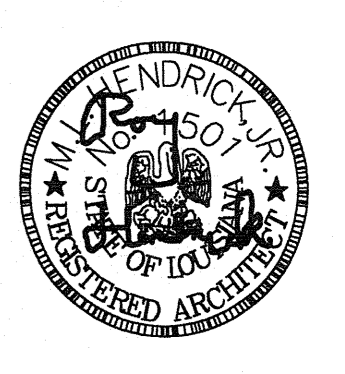
FINISHED GRADE

FOR FOUNDATION DETAILS SEE
FOUNDATION PLAN



1 BUILDING SECTION
SCALE: 3/8" = 1'-0"

ROY HENDRICK AIA ARCHITECT
5647 GALERIA DRIVE, SUITE H
BATON ROUGE, LOUISIANA 70816
(225)-293-6563



Hampton Inn[®]
SIX G'S SUBDIVISION
COVINGTON, LOUISIANA

REVISIONS	
REVISED	
02-28-01	
05-14-01	

DATE
11-01-00
DRAWN BY

SHEET

A4.1