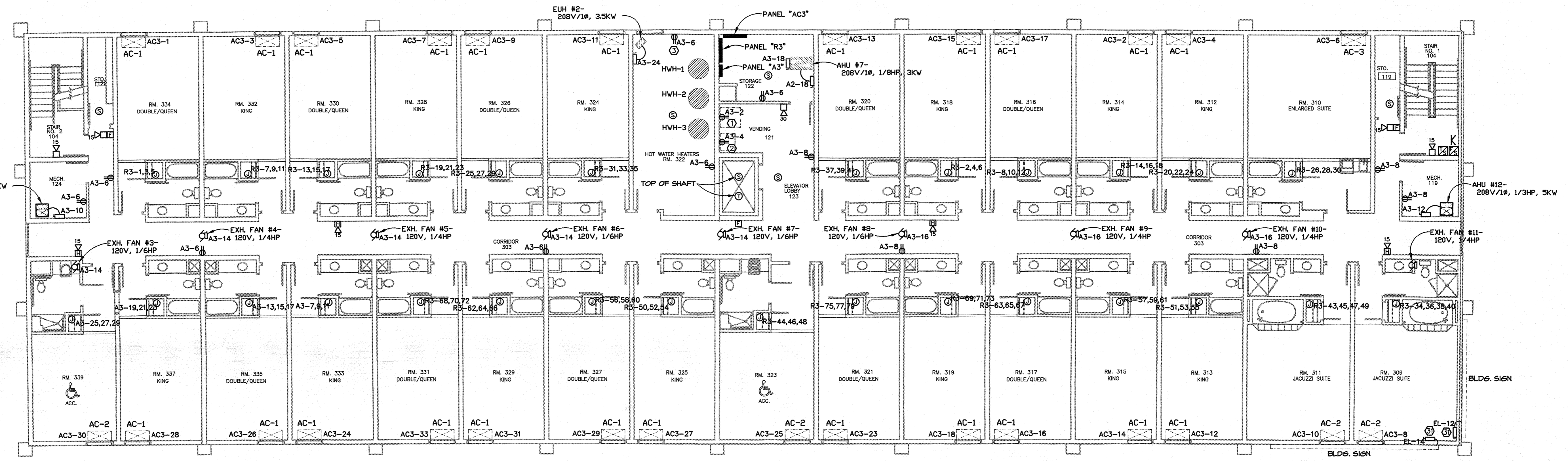


NORTH **1 SECOND FLOOR POWER PLAN**
 SCALE: 1/8" = 1'-0"

- SECOND FLOOR POWER PLAN KEYNOTES**
- LOCATE DUPLEX RECEPTACLE 36" AFF FOR ICE MACHINE.
 - LOCATE DUPLEX RECEPTACLE 36" AFF FOR VENDING MACHINE.
 - 4' x 8' x 3/4" PLYWOOD CATV BACKBOARD; ROUTE A #6 BARE COPPER CONDUCTOR AT BASE OF BACKBOARD AND CONNECT TO GROUND BUS OF PANEL "A2".

- SECOND FLOOR POWER PLAN NOTES**
- VERIFY THE EXACT LOCATION, VOLTAGE, PHASE, AMPERAGE, ETC. OF ALL MECHANICAL EQUIPMENT WITH THE MECHANICAL CONTRACTOR PRIOR TO INSTALLATION.
 - VERIFY THE EXACT LOCATION OF ALL DEVICES WITH THE ARCHITECT PRIOR TO ROUGH-IN.
 - ROUTE ALL VOICE/DATA OUTLETS CONDUITS TO ACCESSIBLE LOCATION ABOVE THE CEILING.
 - THE COUNTER TOP SHALL BE DRILLED AND GROMMETS INSTALLED BY OTHERS WHERE DEVICES ARE SHOWN TO BE INSTALLED INSIDE OR BELOW THE MILLWORK.



NORTH **2 THIRD FLOOR POWER PLAN**
 SCALE: 1/8" = 1'-0"

- THIRD FLOOR POWER PLAN KEYNOTES**
- LOCATE DUPLEX RECEPTACLE 36" AFF FOR ICE MACHINE.
 - LOCATE DUPLEX RECEPTACLE 36" AFF FOR VENDING MACHINE.
 - DUPLEX RECEPTACLE FOR HOT WATER CIRC. PUMP-120V, 1/6 HP.

- THIRD FLOOR POWER PLAN NOTES**
- VERIFY THE EXACT LOCATION, VOLTAGE, PHASE, AMPERAGE, ETC. OF ALL MECHANICAL EQUIPMENT WITH THE MECHANICAL CONTRACTOR PRIOR TO INSTALLATION.
 - VERIFY THE EXACT LOCATION OF ALL DEVICES WITH THE ARCHITECT PRIOR TO ROUGH-IN.
 - ROUTE ALL VOICE/DATA OUTLETS CONDUITS TO ACCESSIBLE LOCATION ABOVE THE CEILING.
 - THE COUNTER TOP SHALL BE DRILLED AND GROMMETS INSTALLED BY OTHERS WHERE DEVICES ARE SHOWN TO BE INSTALLED INSIDE OR BELOW THE MILLWORK.
 - EXHAUST FANS #3 THRU #11 ARE ALL LOCATED IN THE ATTIC.