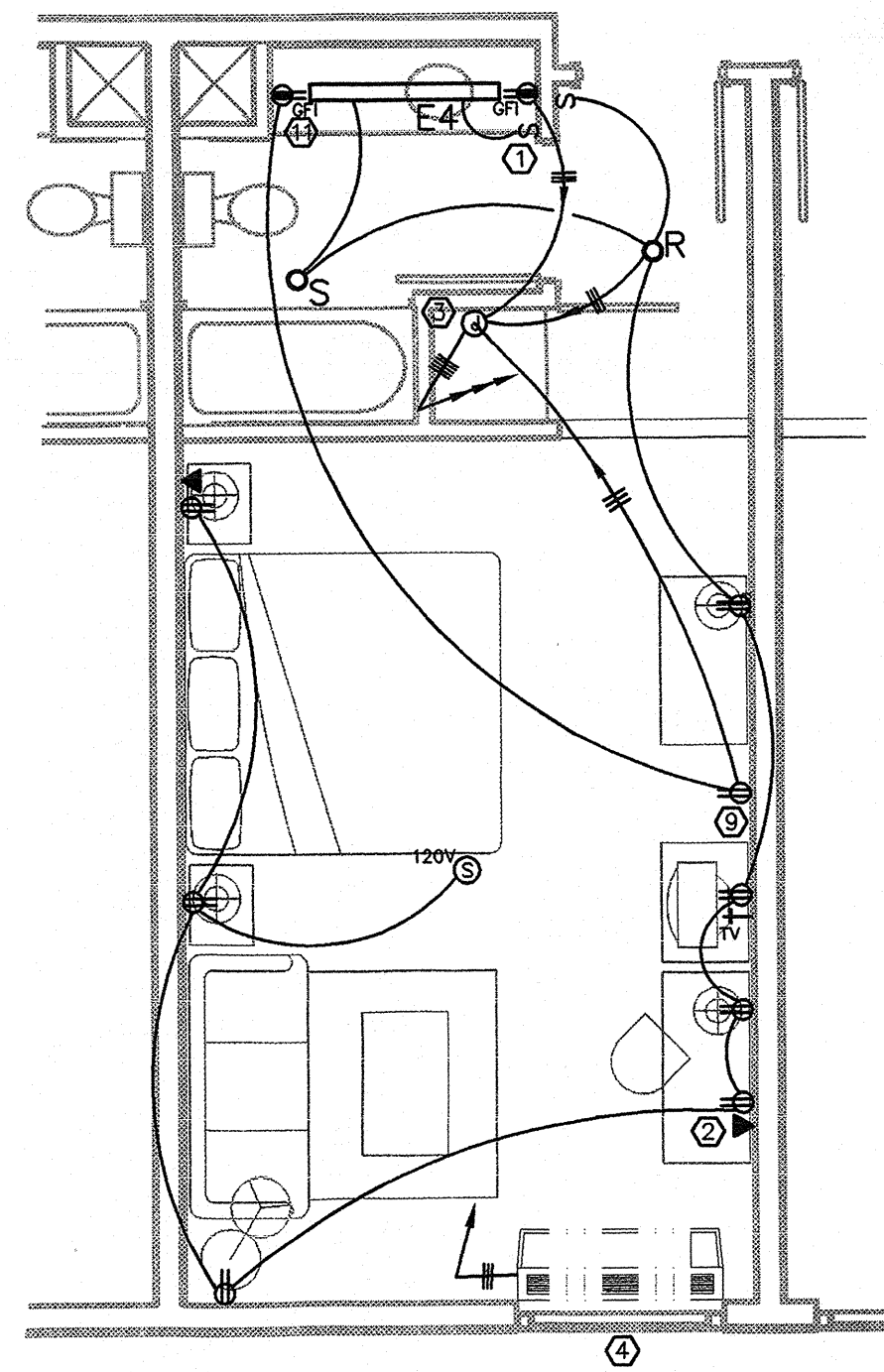
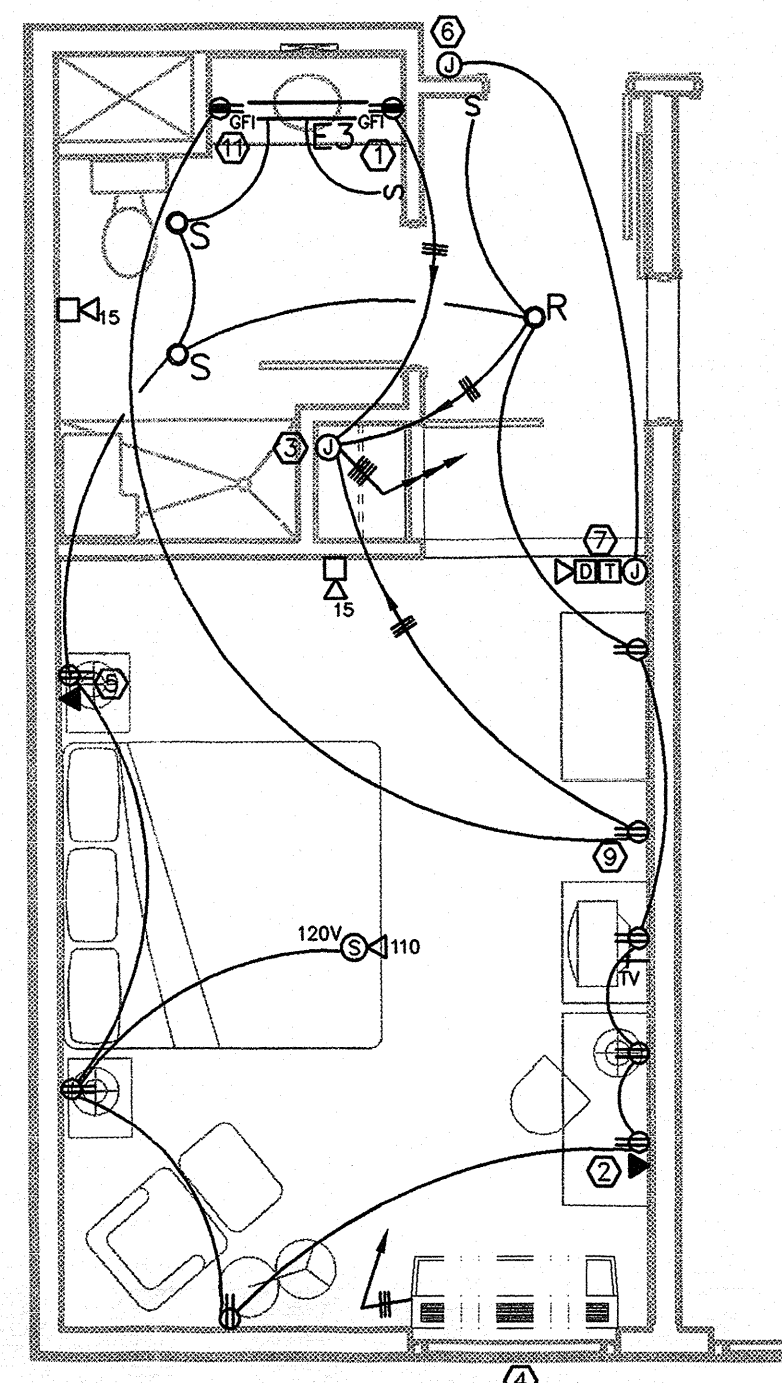


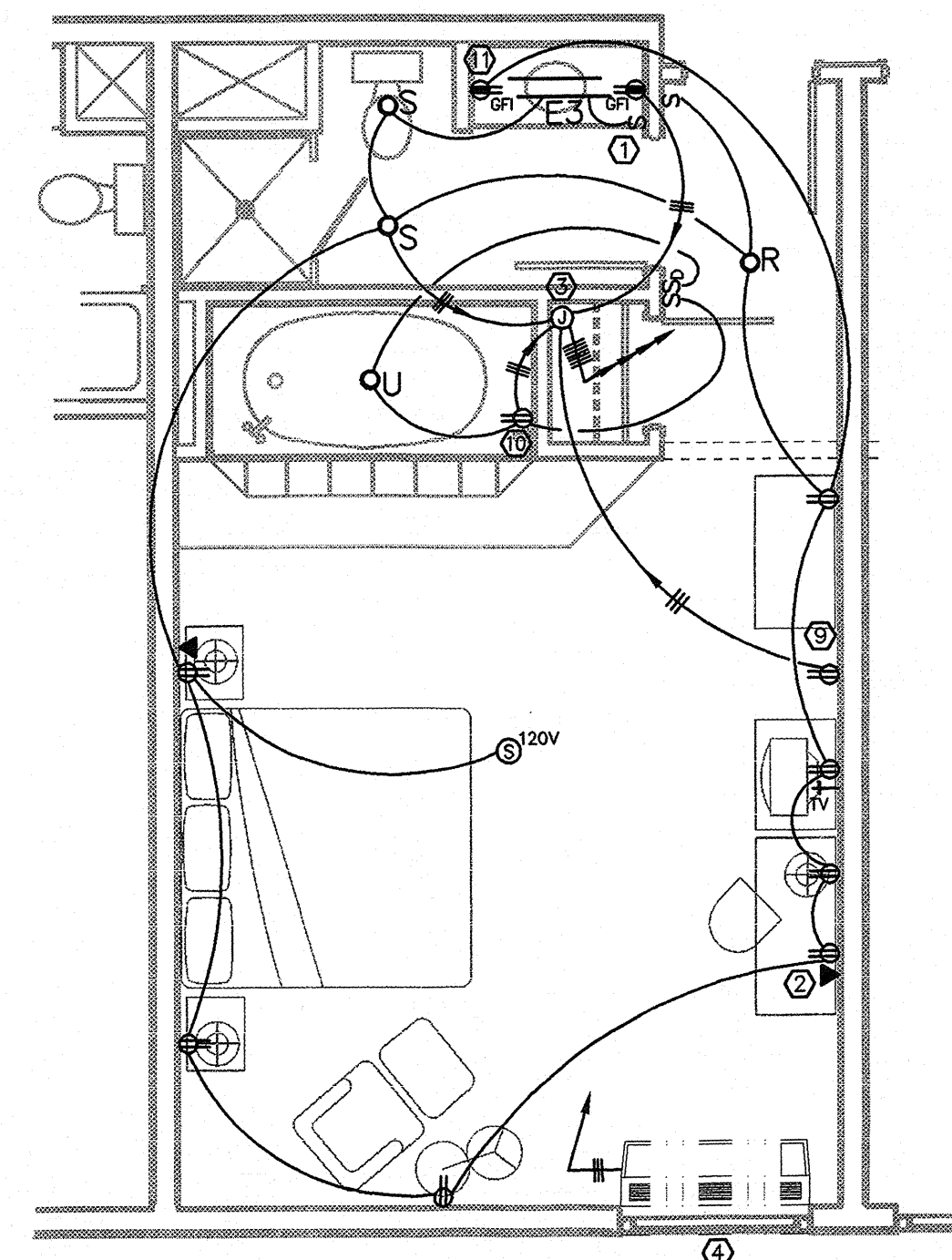
ENLARGED TYPICAL SUITE (D/D)



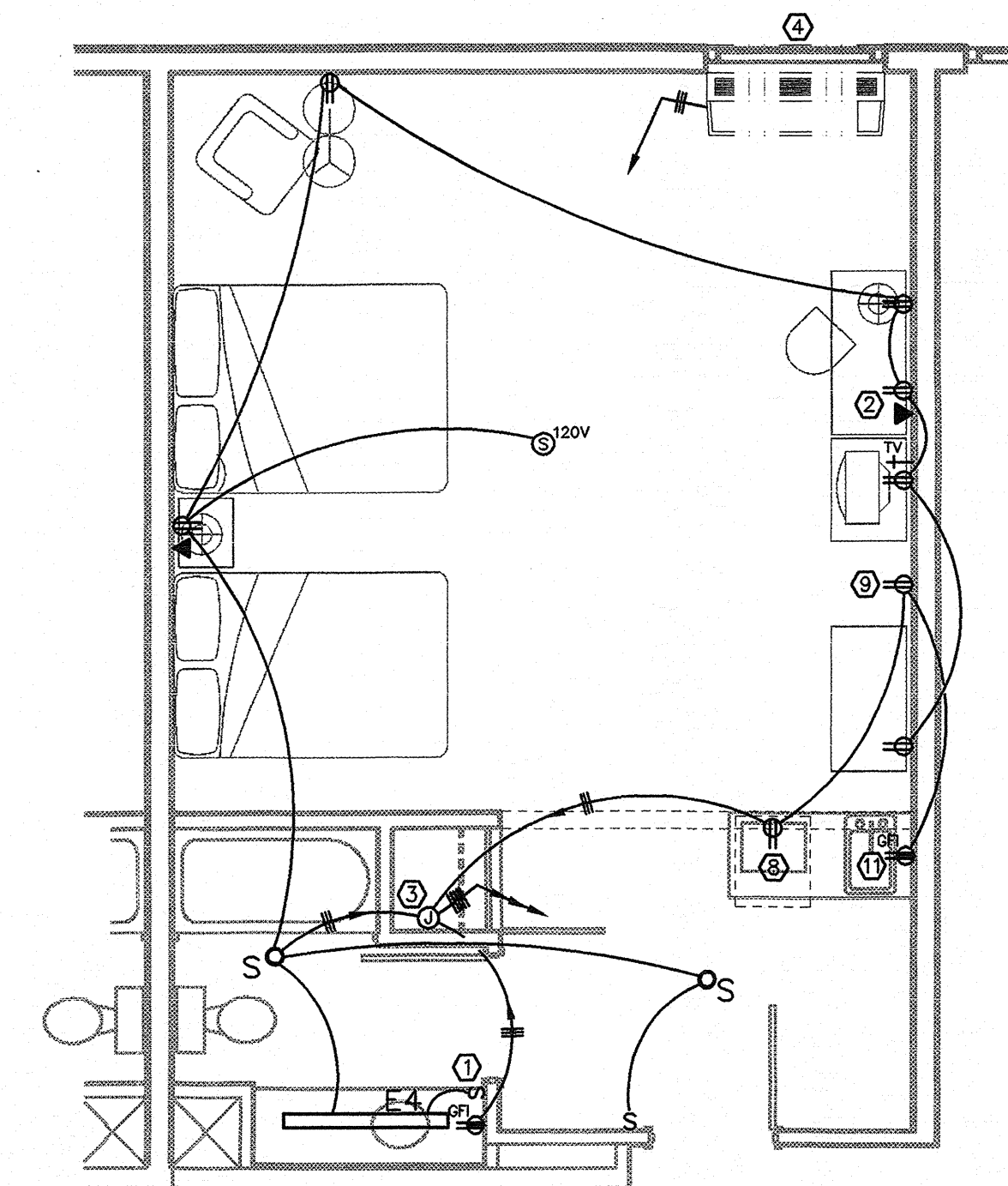
ENLARGED TYPICAL SUITE (KING)



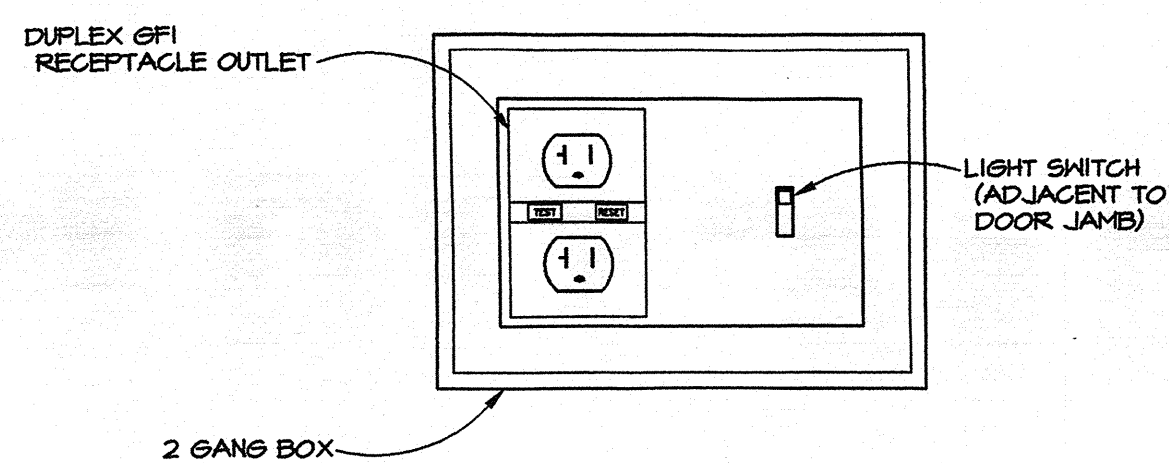
ENLARGED TYPICAL H.C. SUITE



ENLARGED JACUZZI SUITE



TYPICAL EXECUTIVE SUITE



2 SUITE BATH WALL SWITCH
NOT TO SCALE

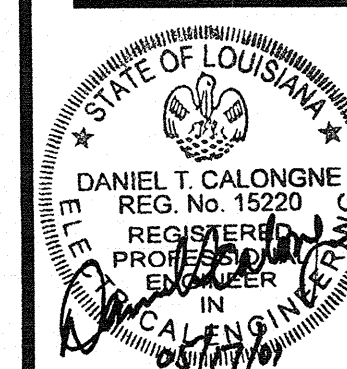
1 ELECTRICAL PLANS-TYPICAL SUITE LAYOUT
SCALE: 1/4" = 1'-0"

ENLARGED SUITES ELECTRICAL KEYNOTES

- ① LOCATE LIGHTED TOGGLE SWITCH & GFI DUPLEX RECEPTACLE 44" AFF, SEE DETAIL.
- ② LOCATE DUPLEX RECEPTACLE & VOICE/DATA OUTLET 36" AFF, LOCATE AT 42" AFF FOR ADJOINING ROOM.
- ③ LOCATE J-BOX 84" AFF.
- ④ THRU-WALL A/C UNIT WITH RECEPTACLE LOCATED IN SUB-BASE, ELECTRICAL CONTRACTOR SHALL HARD-WIRE TO RECEPTACLE FURNISHED IN UNIT SUB-BASE.
- ⑤ LOCATE DUPLEX RECEPTACLE & VOICE/DATA OUTLET 44" AFF.
- ⑥ LOCATE J-BOX 48" AFF FOR DOOR PUSH BUTTON, PROVIDE KEYED SWITCH.
- ⑦ LOCATE 80" AFF DOUBLE-GANG JUNCTION BOX.
- ⑧ LOCATE DUPLEX RECEPTACLE BELOW COUNTER TOP FOR UNDERCOUNTER REFRIGERATOR & MICROWAVE.
- ⑨ LOCATE DUPLEX RECEPTACLE 18" AFF FOR FUTURE REFRIGERATOR/MICROWAVE.
- ⑩ LOCATE DUPLEX RECEPTACLE FOR WHIRLPOOL, COORDINATE EXACT LOCATION WITH MANUFACTURER. CONNECT TYPE "U" LIGHT FIXTURE ON SAME CIRCUIT AS WHIRLPOOL RECEPTACLE.
- ⑪ LOCATE DUPLEX RECEPTACLE 44" AFF FOR COFFEE MAKER.

ENLARGED SUITES ELECTRICAL NOTES

1. VERIFY THE EXACT LOCATION OF ALL DEVICES WITH THE ARCHITECT PRIOR TO ROUGH-IN.
2. ALL LIGHT SWITCHES IN THE GUEST ROOMS SHALL HAVE LIGHTED HANDLES.
3. PROVIDE GUEST ROOM 120 VOLT SINGLE STATION MINI HORN & SMOKE DETECTOR IN ALL GUEST ROOMS NOT ACCESSIBLE OR HEARING IMPAIRED.
4. PROVIDE GUEST ROOM 120 VOLT SINGLE STATION MINI HORN SMOKE DETECTOR & STROBE LIGHT IN ALL GUEST ROOMS ACCESSIBLE OR HEARING IMPAIRED.



ROY HENDRICK AIA ARCHITECT
5647 GALERIA DRIVE, SUITE H
BATON ROUGE, LOUISIANA 70816
(225)-293-6363

Hampton Inn
SIX G'S SUBDIVISION
COVINGTON, LOUISIANA

REVISIONS
3-9-01
5-14-01

DATE
11-17-00
DRAWN BY
SHEET

ASSOCIATES
Daniel T. Calongne
7911 Winwood Blvd., Suite D
Baton Rouge, Louisiana 70809
voice (225)922-9223 fax (225) 922-9414

E3.0