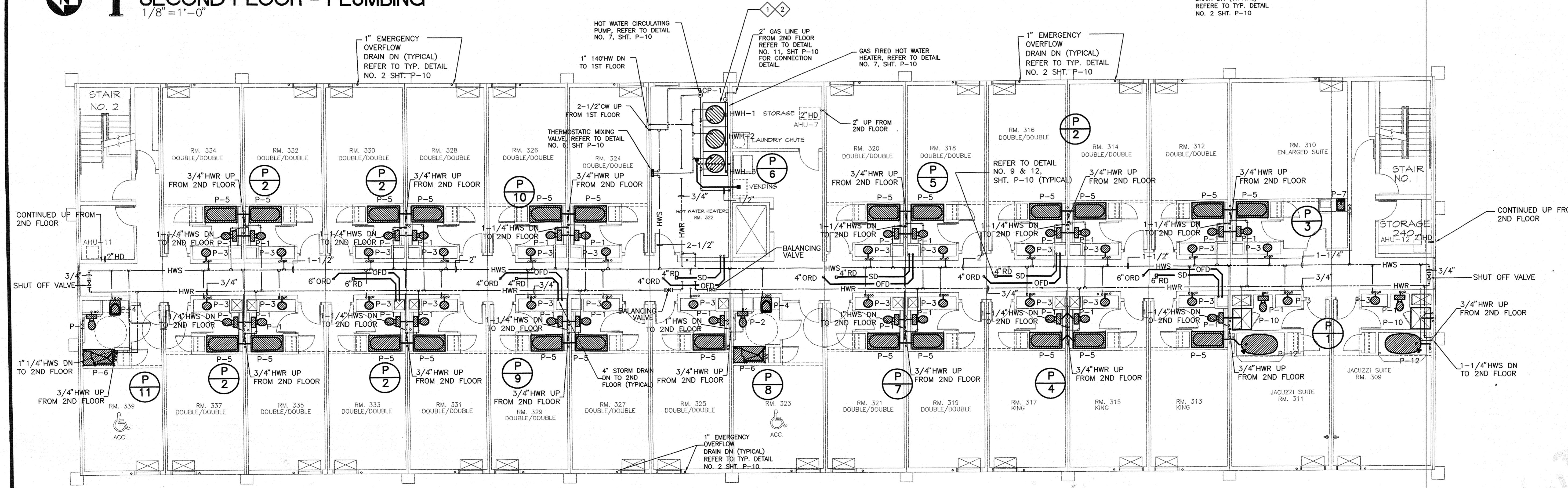


1 SECOND FLOOR = PLUMBING
1/8" = 1'-0"



2 THIRD FLOOR = PLUMBING
1/8" = 1'-0"

NOTE:
CONTRACTOR TO PROVIDE ISOLATION VALVE (BALL VALVE) ON ALL HWS LINES TO ALL RISERS. CONTRACTOR SHALL ALSO PROVIDE ISOLATION VALVE, CHECK VALVE AND BALANCING VALVE ON ALL HWR LINES FROM THE SAME RISERS. REFER TO WATER RISER DIAGRAM.

ROY HENDRICK AIA ARCHITECT
5547 GALERIA DRIVE, SUITE H
BATON ROUGE, LOUISIANA 70815
(504)-293-5353

Hampton Inc.
SIX G'S SUBDIVISION
COVINGTON, LOUISIANA

REVISIONS
5-14-01
DATE
11-01-00
DRAWN BY
SHEET

VOD
6/14/04