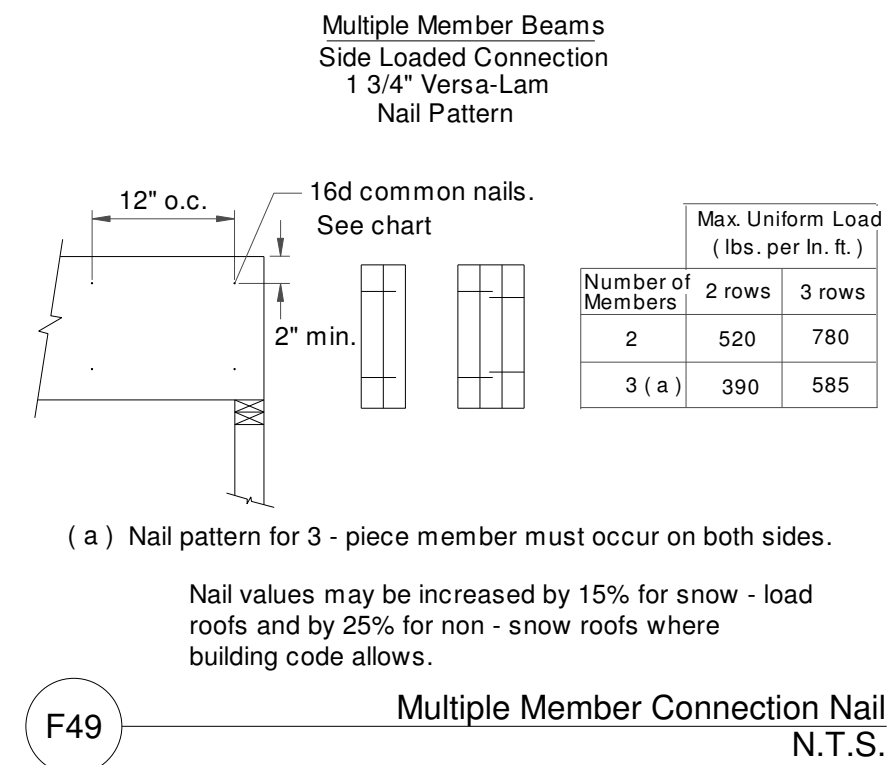


Builder must check correctness of this drawing PRIOR to erection of system. This drawing is conceptual and should be used with the Architectural plans to insure proper joist and beam placement. Stairways may be drawn small to allow for adjustments in the field.

BEARING WALLS AND POINT LOADS FROM FLOORS ABOVE DIRECTLY EFFECT SLAB OR FLOORS BELOW AND SHOULD BE ADDRESSED PRIOR TO INSTALLATION OF SLAB OR FLOORS BELOW IF NOT ADDRESSED IN THESE LAYOUTS!!!!!!!!!!

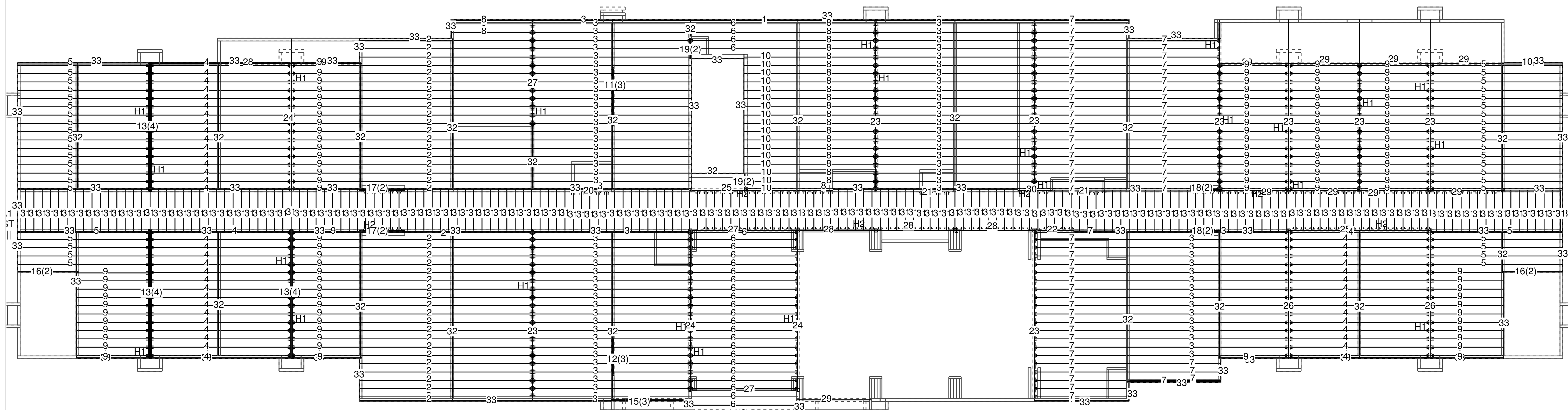
Symbols for reference only. Framer to verify fixture locations for proper joist adjustments.



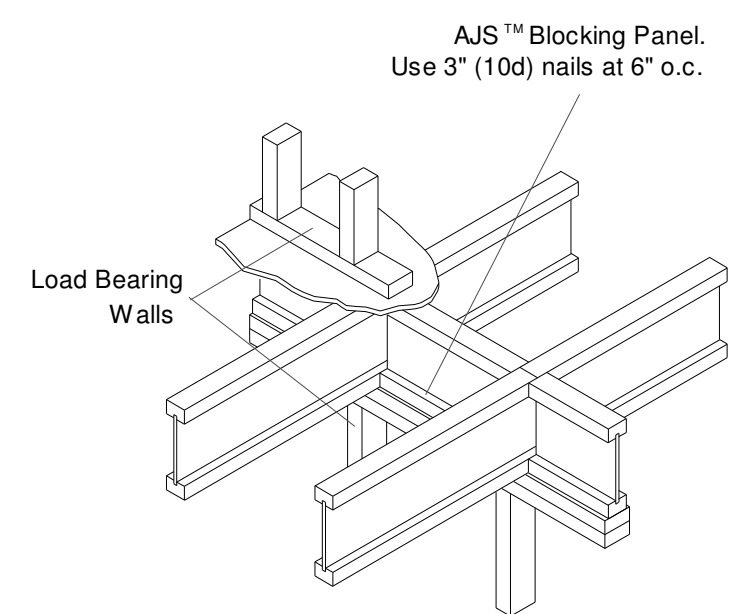
Accessory Schedule			
Tag	Qty	Manufacturer	Product / Description
H1	561	Simpson Strong-Tie, Inc.	ITS1.81/16
H2	147	Simpson Strong-Tie, Inc.	THA422

Framing Schedule - Nominalized			
Tag	Qty	Product	Length
1	1	16" BCI@ 4500s-1.8 SP	30' 0"
2	41	16" BCI@ 4500s-1.8 SP	28' 0"
3	82	16" BCI@ 4500s-1.8 SP	26' 0"
4	51	16" BCI@ 4500s-1.8 SP	24' 0"
5	43	16" BCI@ 4500s-1.8 SP	22' 0"
6	26	16" BCI@ 4500s-1.8 SP	18' 0"
7	67	16" BCI@ 4500s-1.8 SP	16' 0"
8	24	16" BCI@ 4500s-1.8 SP	14' 0"
9	107	16" BCI@ 4500s-1.8 SP	12' 0"
10	18	16" BCI@ 4500s-1.8 SP	10' 0"
11	3	1-3/4" x 11-7/8" VERSA-LAM@ 2.0 3100 SP	10' 0"
12	3	1-3/4" x 11-7/8" VERSA-LAM@ 2.0 3100 SP	8' 0"
13	12	1-3/4" x 16" VERSA-LAM@ 2.0 3100 SP	22' 0"
14	3	1-3/4" x 16" VERSA-LAM@ 2.0 3100 SP	18' 0"
15	3	1-3/4" x 16" VERSA-LAM@ 2.0 3100 SP	14' 0"
16	4	1-3/4" x 16" VERSA-LAM@ 2.0 3100 SP	10' 0"
17	4	1-3/4" x 16" VERSA-LAM@ 2.0 3100 SP	8' 0"
18	4	1-3/4" x 16" VERSA-LAM@ 2.0 3100 SP	6' 0"

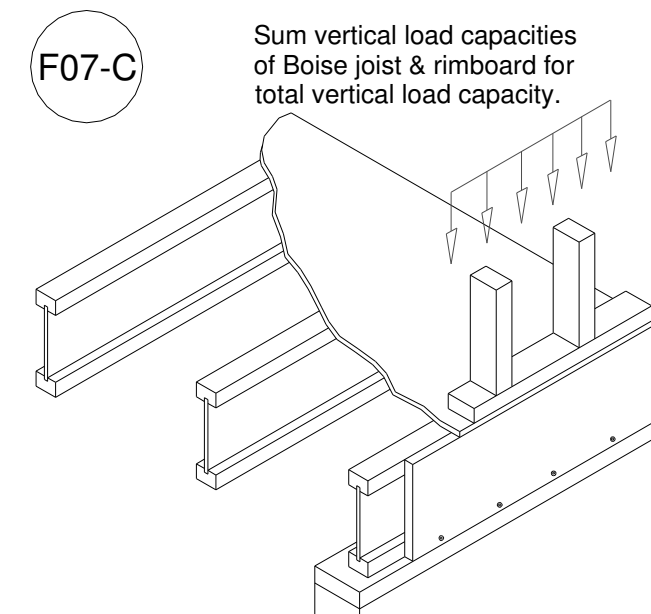
Tag	Qty	Product	Length
19	4	1-3/4" x 16" VERSA-LAM@ 2.0 3100 SP	4' 0"
20	1	BEAM BY OTHERS	8' 0"
21	2	BEAM BY OTHERS	6' 0"
22	1	STEEL BEAM	6' 0"
23	8	Steel beam by Others	28' 0"
24	3	Steel beam by Others	26' 0"
25	3	Steel beam by Others	24' 0"
26	2	Steel beam by Others	22' 0"
27	3	Steel beam by Others	18' 0"
28	4	Steel beam by Others	14' 0"
29	10	Steel beam by Others	12' 0"
30	1	Steel beam by Others	6' 0"
31	186	TRIM JOIST	8' 0"
32	BLK	1-1/8" x 16" BC RIM BOARD™ OSB	400' 0"
33	TL	1-1/8" x 16" BC RIM BOARD™ OSB	864' 0"
Tag	Qty	Product	Length
Additional			
27	1	1-1/8" x 16" BC RIM BOARD™ OSB	12' 0"



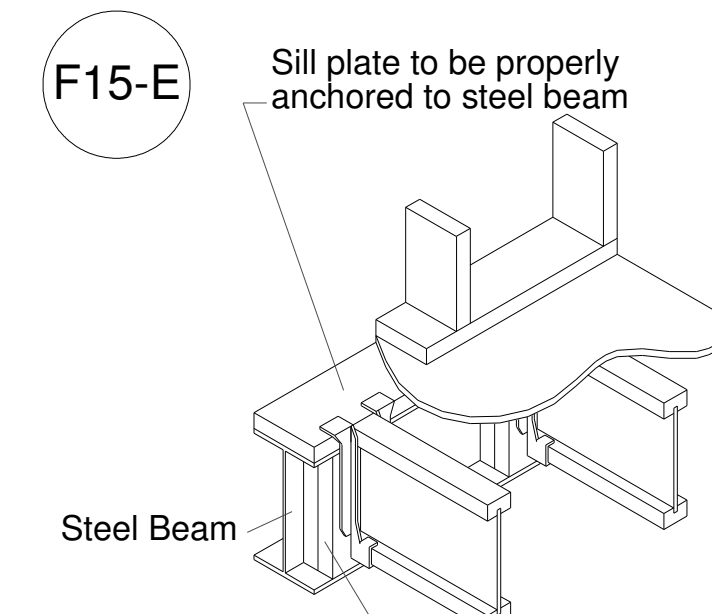
Plan View
1/8" = 1'-0"



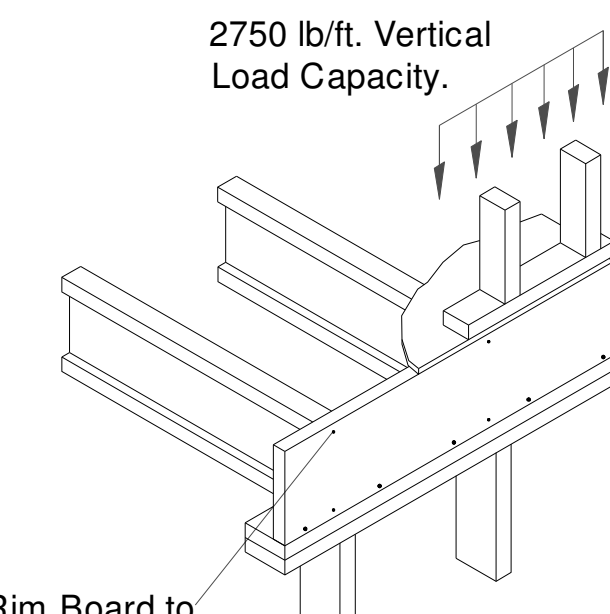
F13-E Blocking Panels at Interior Bearing N.T.S.



F07-C Boise Rim Joist with Parallel Rimboard N.T.S.



F15-E Connection with Hangers on Steel Beam N.T.S.



F54 BCI Joist BC Rim Board N.T.S.



Clinton Office Phone #
Office : 601-925-1782
Toll free : 1-800-365-1629
Fax : 601-925-1783
e-mail: ronnie@elpewp.com

NOTE:
ALL
MEASUREMENTS
TO BE VERIFIED IN
THE FIELD.

Floor 1
CONTACT ENGINEERED LUMBER PARTNERS
AT 1-866-523-4391 FOR PROPER SIZED & LOCATED
PRE-CUT HVAC HOLES PRIOR TO PLACING ORDER.

LOADING
floor 40LL/10DL
roof 20LL/20DL

Morrison Terrebonne - Kevin
Hampton Inn - 1651 Frith St.
Engineered Lumber Partners
Clinton, MS

BC FRAMER@ 3.0

SCALE: N.T.S.

DATE: 5/13/2012

BY: Ronnie Talley

FILE: 17407REV2.bcf

DWG:

SHEET: 1 / 1