

**DAMMON ENGINEERING, INC.**

CHIEF ENGINEER  
EMMETT DAMMON, P.E.

CHIEF ARCHITECT  
ROBERT WILTSE

554 OLD SPANISH TRAIL  
SLIDELL, LA. 70458  
OFFICE: 985-649-5832  
FAX: 985-641-5950

WEBSITE:  
WWW.DAMMONENGINEERING.COM

EMAIL:  
DAMMONENG@BELLSOUTH.NET

ARCHITECTURE  
ENGINEERING  
STUDIES  
PLANNING  
INVESTIGATION  
EXPERT WITNESS

LA QUINTA  
INN & SUITES

SPORTSMAN PARK  
LOT 14  
CABLEA'S PARKWAY  
GONZALES  
LOUISIANA

2ND, 3RD & 4TH  
FLOOR PLAN

REV: Robert Wiltse

SCALE: AS NOTED

JOB#: 2141

DATE: 07-03-12

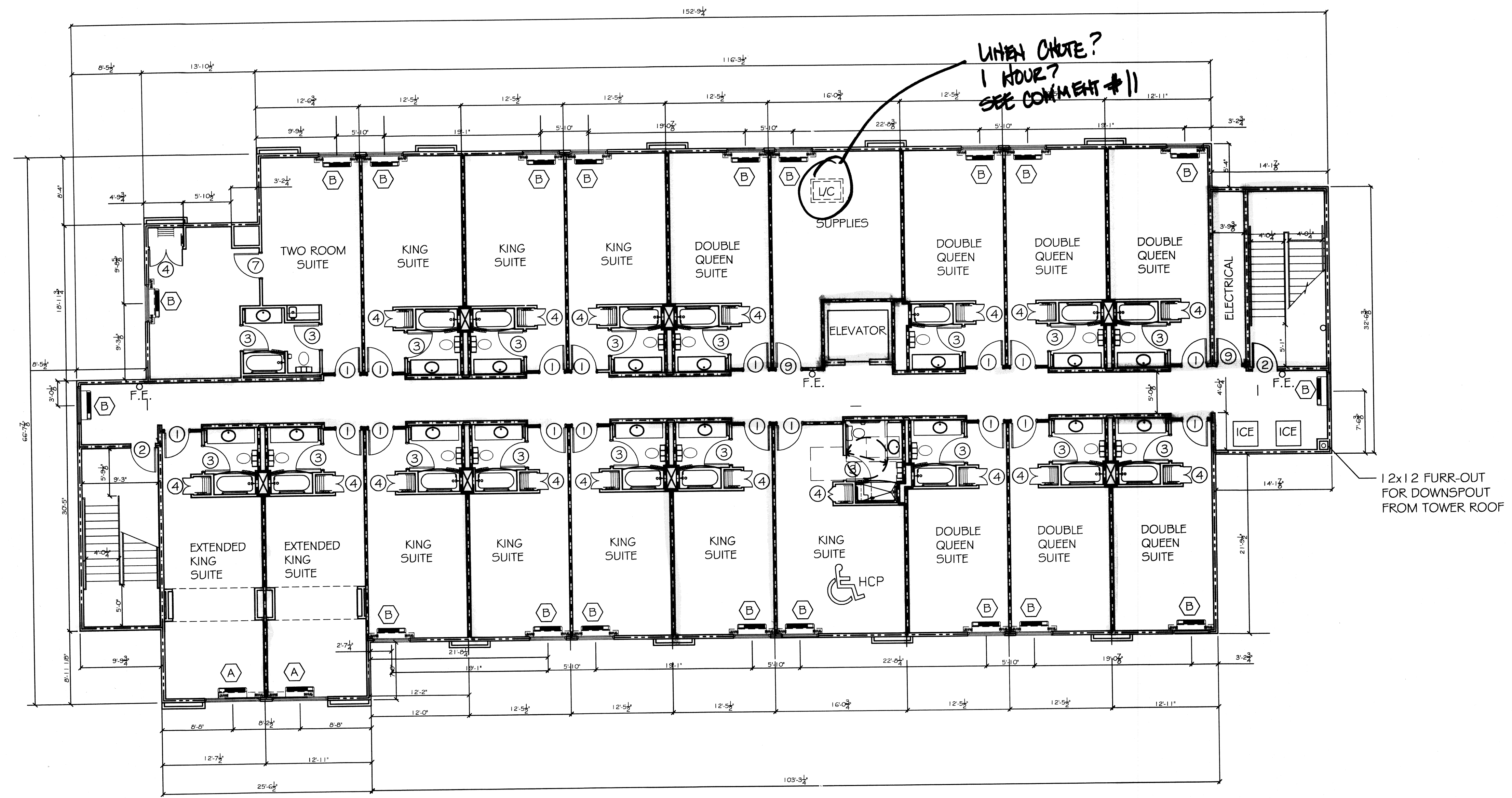
SHEET 7

REVIEWED FOR  
STATE FIRE MARSHAL  
AS PER REVIEW LETTER  
BY: MARGARET HILL, ARCHITECT

*Margaret Hill*

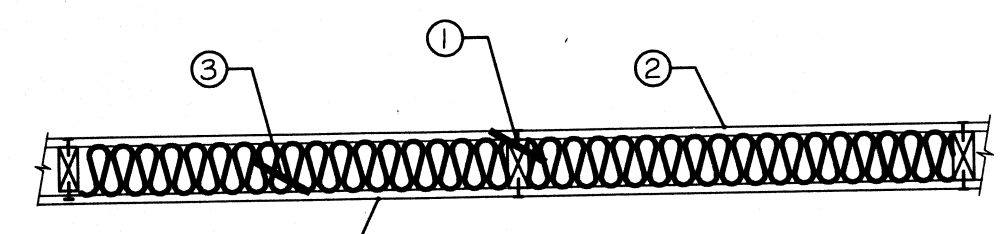
A-2

OF 36



2ND, 3RD & 4TH FLR PLAN  
SCALE: 1/8" = 1'-0"

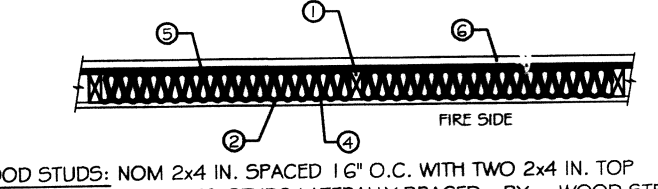
DESIGN NO. U333  
BEARING WALL RATING- 1 HR.  
FINISH RATING- 23 MIN.



- WOOD STUDS: NOM. 2 BY 4 IN., SPACED 16 IN. O.C. EFFECTIVELY CROSS BRACED.
- GYPSUM BOARD: 5/8 IN. THICK, 4 FT. WIDE, APPLIED EITHER VERTICALLY OR HORIZONTALLY. SCREW ATTACHED TO STUDS AND PLATES WITH 1 1/4 IN. LONG TYPE W STEEL SCREWS, SPACED 12 IN. O.C.  
AMERICAN GYPSUM CO. - TYPES AG-C, AGX-C, BFB AMERICA, INC. - PRO ROC TYPE C, CANADIAN GYPSUM COMPANY - TYPES C, IF-X2, IPC-AR, G-F GYPSUM CORP., SUB. OF GEORGIA PACIFIC CORP. - TYPE 5, LAFARGE NORTH AMERICA, INC. - TYPES LGFC-C, LGFC-CA, NATIONAL GYPSUM CO. - TYPES FSW-C, FSW-G, PABCO GYPSUM, DIV. OF PACIFIC COAST BUILDING PROD., INC. - TYPE C OR FG-C, STANDARD GYPSUM, LLC - TYPE SG-C, TEMPLE-INLAND FOREST PRODUCTS CORP. - TYPE TG-C, UNITED STATES GYPSUM CO. - TYPES C, IF-X2, IPC-AR, USG MEXICO S A DE C V. - TYPES C, IF-X2, IPC-AR.
- BATTS AND BLANKETS: (OPTIONAL)  
MINERAL WOOL INSULATION, PARTIALLY OR COMPLETELY FILLING STUD CAVITY.  
THERMAFIBER LLC - TYPE SAFB.
- FIBER, SPRAYED:  
AS AN ALTERNATE TO BATTS AND BLANKETS (ITEM 3): SPRAY APPLIED CELLULOSE INSULATION MATERIAL. THE FIBER IS APPLIED WITH WATER TO COMPLETELY FILL THE ENCLOSED CAVITY IN ACCORDANCE WITH THE APPLICATION INSTRUCTIONS SUPPLIED WITH THE PRODUCT. NOMINAL DRY DENSITY OF 3.0 LB/FT<sup>3</sup>.  
U. S. GREENFIBER LLC - COCOON STABILIZED CELLULOSE INSULATION.
- FIBER, SPRAYED:  
AS AN ALTERNATE TO BATTS AND BLANKETS (ITEM 3) AND ITEM 3A: SPRAY APPLIED CELLULOSE INSULATION MATERIAL. THE FIBER IS APPLIED WITH WATER TO INTERIOR SURFACES IN ACCORDANCE WITH THE APPLICATION INSTRUCTIONS SUPPLIED WITH THE PRODUCT. APPLIED TO COMPLETELY FILL THE ENCLOSED CAVITY. MINIMUM DRY DENSITY OF 4.3 POUNDS PER CUBIC FT.  
NU-WOOL CO., INC. - CELLULOSE INSULATION.
- JOINTS AND WALLHEADS: WALLBOARD JOINTS COVERED WITH PAPER TAPE AND JOINT COMPOUND.

\*BEARING THE UL CLASSIFICATION MARK

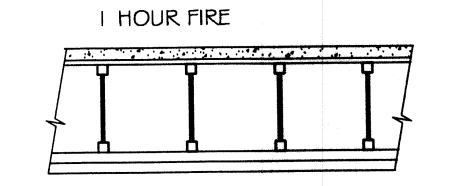
DESIGN NO. U356  
(EXPOSED TO FIRE ON INTERIOR FACE ONLY)  
BEARING WALL RATING- 1 HR.  
FINISH RATING- 23 MIN.



- WOOD STUDS: NOM. 2x4 IN. SPACED 16" O.C. WITH TWO 2x4 IN. TOP PLATES AND ONE 2x4 IN. BOTTOM PLATE. STUDS LATERALLY BRACED BY WOOD STRUCTURAL PANEL SHEATHING (ITEM 5) AND EFFECTIVELY FIRE STOPPED AT TOP AND BOTTOM OF WALL.
- GYPSUM BOARD: ANY CLASSIFIED 5/8" THICK, 4 FT. WIDE, APPLIED VERTICALLY AND NAILED TO STUDS AND BEARING PLATES 7 IN. O.C. WITH 6D COATED NAILS, 1-7/8" LONG WITH 1/4" DIAMETER HEAD.
- JOINTS AND WALLHEADS: NOT SHOWN WALL BOARD JOINTS COVERED WITH TAPE AND JOINT COMPOUND. NAIL HEADS COVERED WITH JOINT COMPOUND.
- BATTS AND BLANKETS: MINERAL FIBER OR GLASS FIBER INSULATION, 3-1/2" THICK. PRESSURE FIT TO FILL WALL CAVITIES BETWEEN STUDS AND PLATES. MINERAL FIBER INSULATION TO BE UNFACED AND TO HAVE A MIN. DENSITY OF 3 PCF. GLASS FIBER INSULATION TO BE FACED WITH ALUMINUM FOIL OR KRAFT PAPER AND TO HAVE A MIN. DENSITY OF 0.9 PCF (MIN. R-13 THERMAL INSULATION RATING).
- WOOD STRUCTURAL PANEL SHEATHING: MIN. 7/16" THICK, 4 FT. WIDE WOOD STRUCTURAL PANELS, MIN. GRADE "C" OR "SHEATHING". INSTALLED WITH LONG DIMENSION OF SHEET STRENGTH AXIS OR FACE GRAIN OF PLYWOOD PARALLEL WITH OR PERPENDICULAR TO STUDS. VERTICAL JOINTS CENTERED ON STUDS. HORIZONTAL JOINTS BACKED WITH NOM. 2x4 IN. WOOD BLOCKING. ATTACHED TO STUDS ON EXTERIOR SIDE OF WALL WITH 6D CEMENT COATED BOX NAILS SPACED 6" O.C. AT PERIMETER OF PANELS AND 12" O.C. ALONG INTERIOR STUDS.
- EXTERIOR FACINGS: INSTALLED IN ACCORDANCE WITH THE MANUFACTURERS INSTALLATION INSTRUCTIONS. ONE OF THE FOLLOWING EXTERIOR FACINGS IS TO BE APPLIED OVER THE SHEATHING.  
A. VINYL SIDING: MOLDED PLASTIC - CONTOURED RIGID VINYL SIDING HAVING A FLAME SPREAD VALUE OF 25 OR LESS.  
B. PARTICLE BOARD SIDING: HARDBOARD EXTERIOR SIDINGS INCLUDING PATTERNED PANEL OR LAF SIDING.  
C. WOOD STRUCTURAL PANEL OR LAF SIDING: APA RATED SIDING, EXTERIOR, PLYWOOD, OSB OR COMPOSITE PANELS WITH VENEER FACES AND STRUCTURAL WOOD CORE, PER PS1 OR APA STANDARD PSF-108, INCLUDING TEXTURED, ROUGH SAWN, MEDIUM DENSITY OVERLAY, BRUSHED, GROOVED AND LAF SIDING.  
D. CEMENTITIOUS STUCCO: PORTLAND CEMENT OR SYNTHETIC STUCCO SYSTEMS WITH SELF FURRING METAL LATH OR ADHESIVE BASE COAT. THICKNESS FROM 3/8" TO 3/4", DEPENDING ON SYSTEM.  
E. BRICK VENEER: ANY TYPE ON NOM. 4" WIDE BRICK VENEER. WHEN BRICK VENEER IS USED, THE RATING IS APPLICABLE WITH DOWNSIDE ON EITHER FACE. BRICK VENEER FASTENED WITH CORRUGATED METAL WALL TIES ATTACHED OVER SHEATHING TO WOOD STUDS WITH 8D NAIL PER TIE. TIES SPACED NOT MORE THAN EACH SIXTH CORNER OF BRICK AND MAX 32" O.C. HORIZONTALLY. 1" AIR SPACE PROVIDED BETWEEN BRICK VENEER AND SHEATHING.  
F. EXTERIOR INSULATION AND FINISH SYSTEM (EIFS): NOM. 1" FOAMED PLASTIC INSULATION BEARING THE UL CLASSIFICATION MARKING, ATTACHED OVER SHEATHING AND FINISHED WITH COATING SYSTEM, OR PORTLAND CEMENT OR SYNTHETIC STUCCO SYSTEMS, IN ACCORDANCE WITH MANUFACTURERS INSTRUCTIONS.  
G. SIDING: ALUMINUM OR STEEL SIDING ATTACHED OVER SHEATHING TO STUDS.  
H. FIBER CEMENT SIDING: FIBER CEMENT EXTERIOR SIDINGS INCLUDING SMOOTH AND PATTERNED PANEL OR LAF SIDING.

GA FILE NO. FC 5513  
GENERIC

BASE LAYER: TYPE X GYPSUM WALLBOARD APPLIED AT RIGHT ANGLES TO MINIMUM 3/4" DEEP WOOD JOISTS, WITH MINIMUM 1 1/4" DEEP X 1 1/2" WIDE FLANGES AND MINIMUM 3/8" WEBS, 24" O.C. WITH 1-5/8" TYPE W OR 5 DRYWALL SCREWS 12" O.C. AT INTERMEDIATE JOISTS, 8" O.C. AT END JOISTS AND 1 1/2" TYPE G DRYWALL SCREWS 8" O.C. PLACED 6" BACK ON EITHER SIDE OF END JOISTS. JOISTS OFFSET 24" FROM BASE LAYER JOISTS. WOOD JOISTS SUPPORTING 5/8" PLYWOOD WITH LONG EDGES T & g APPLIED AT RIGHT ANGLES TO JOISTS WITH 8d COMMON NAILS. 1 1/2" LIGHTWEIGHT CONCRETE POURED OVER PLYWOOD.



APPROX. CEILING WEIGHT: 5 PSF  
FIRE TEST: FM J.1: 2C937 AC 9-29-78  
FM DESIGN FC-268

LEGEND

- 1 HOUR RATED INTERIOR WALL  
SEE UL# U333- SHEET A-2
- 1 HOUR RATED EXTERIOR WALL  
SEE UL# U356- SHEET A-2
- o - FIRE EXTINGUISHER

417528

REVIEWED FOR  
STATE FIRE MARSHAL  
AS PER REVIEW LETTER  
BY: MARGARET HILL, ARCHITECT

*Margaret Hill*