

DAMMON ENGINEERING, INC.

CHIEF ENGINEER
EMMETT DAMMON, P.E.

CHIEF ARCHITECT
ROBERT WILTSE

554 OLD SPANISH TRAIL
SLIDELL, LA. 70458
OFFICE: 985-649-5832
FAX: 985-641-5950

WEBSITE:
WWW.DAMMONENGINEERING.COM

EMAIL:
DAMMONENG@BELLSOUTH.NET

ARCHITECTURE
ENGINEERING
STUDIES
PLANNING
INVESTIGATION
EXPERT WITNESS

LA QUINTA
INN & SUITES

SPORTSMAN PARK
LOT 14
CABLE'S PARKWAY
GONZALES
LOUISIANA

EXTERIOR
BUILDING
DETAILS

REV:

Robert Wiltse

SCALE: AS NOTED

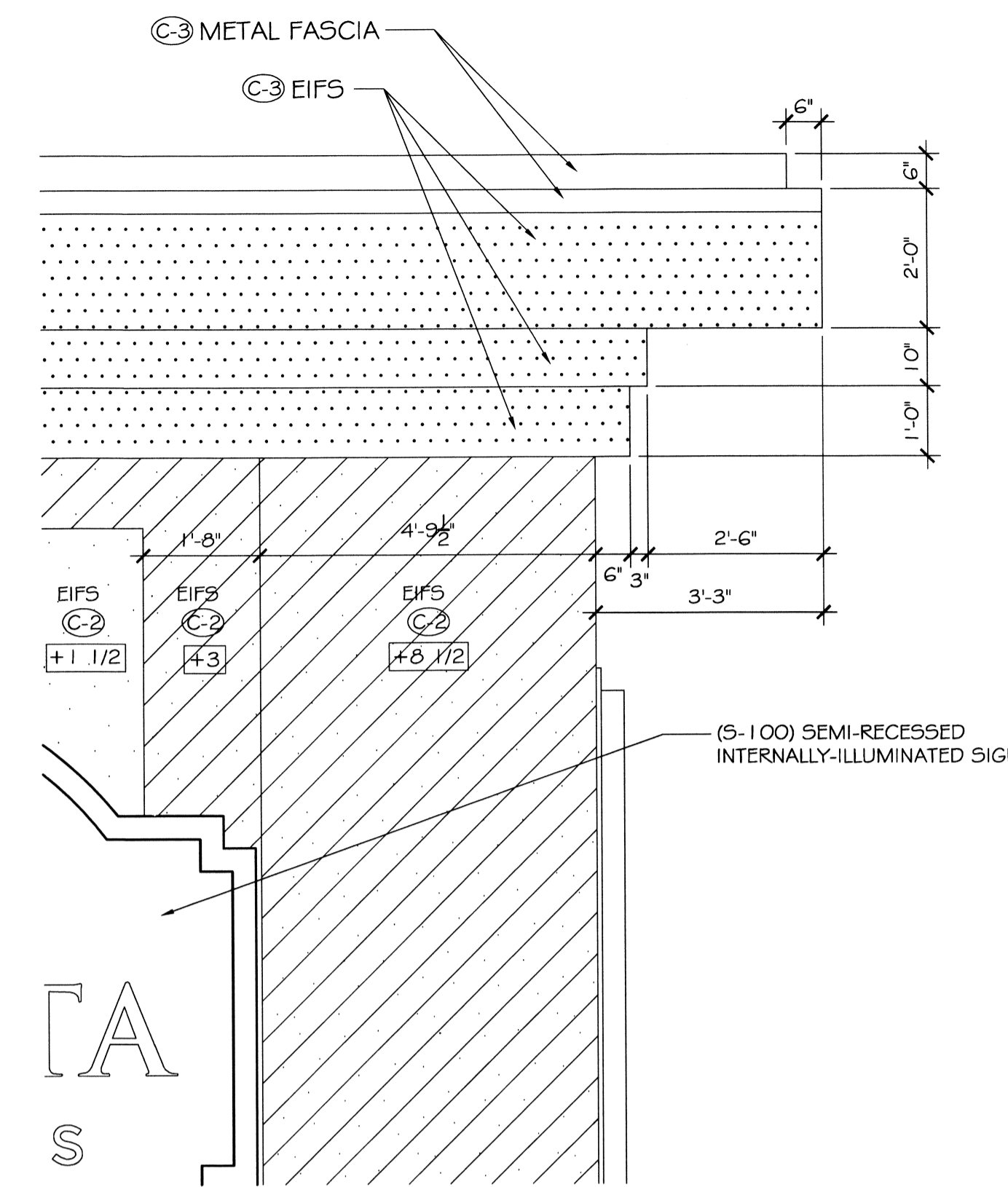
JOB#: 2141

DATE: 07-03-12

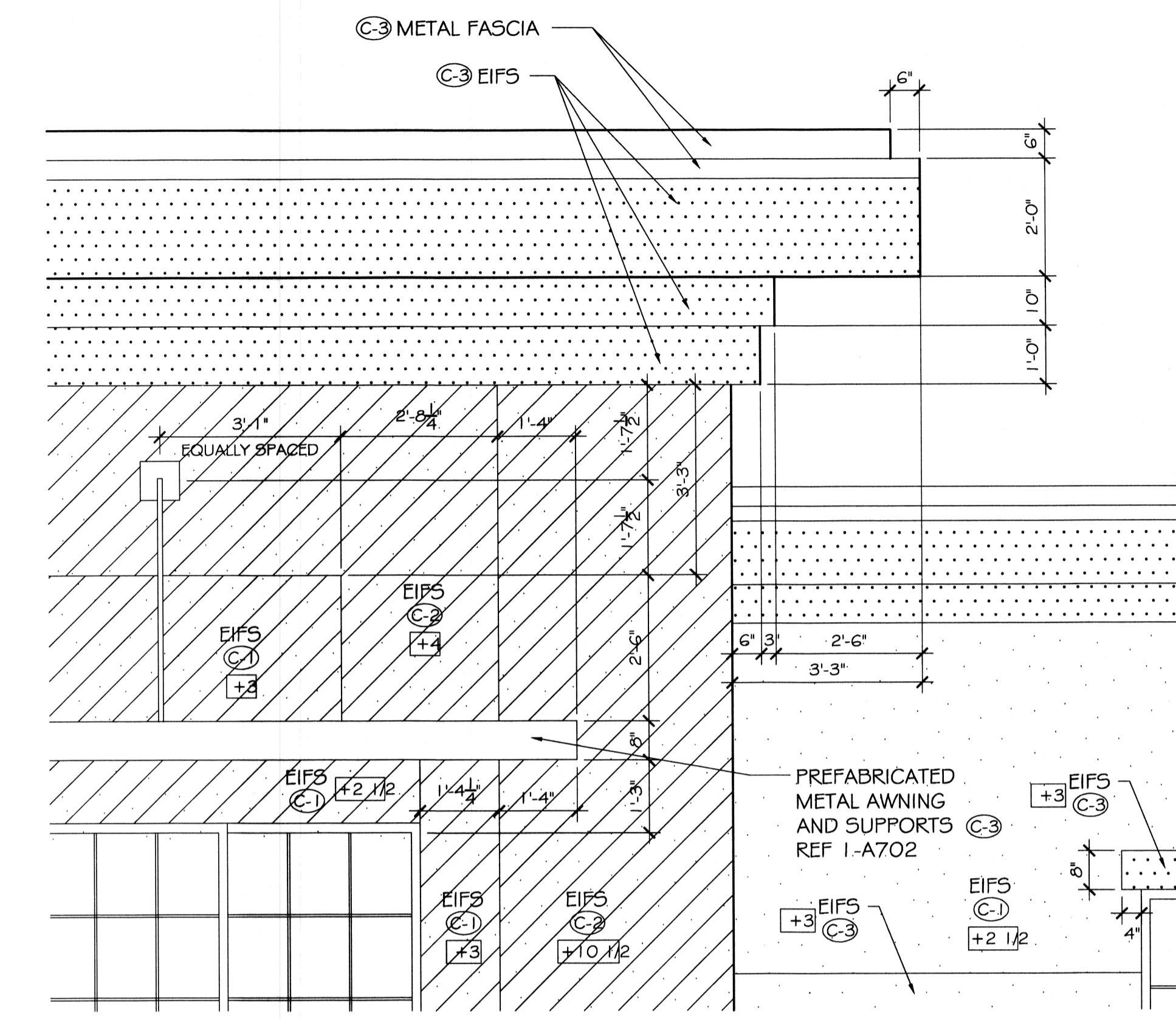
SHEET 12

A-7

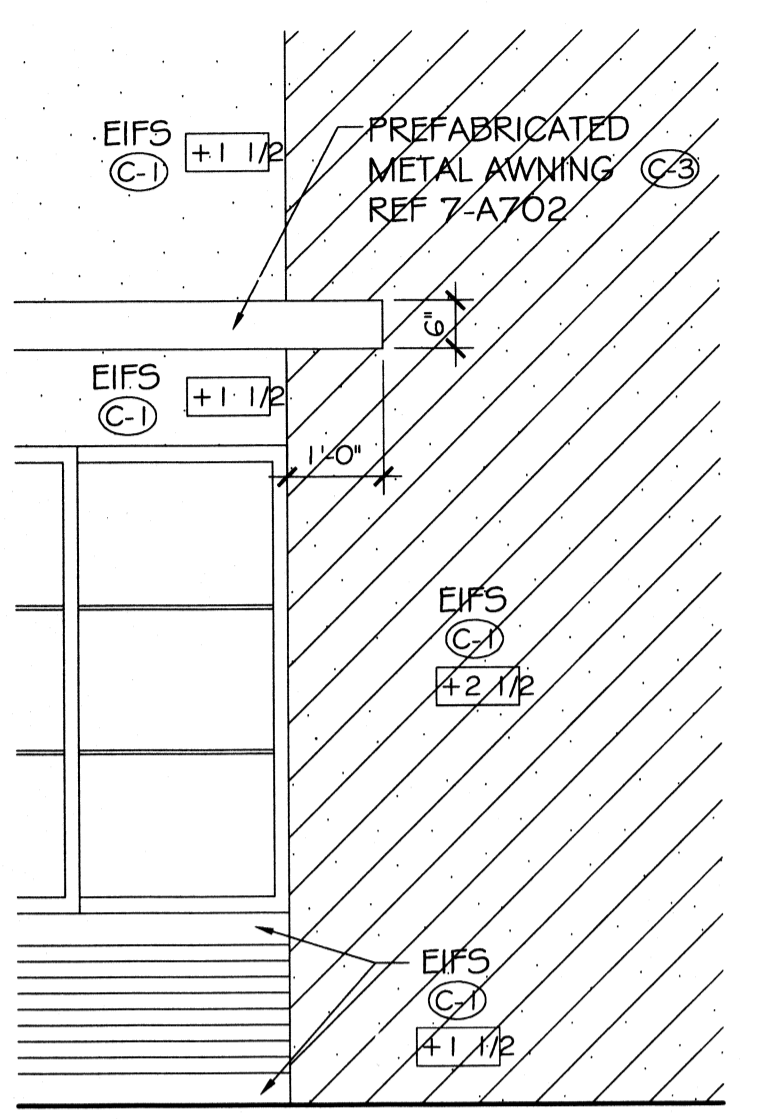
OF 36



9 ELEVATION DETAILS
SCALE: 1/2" = 1'-0"

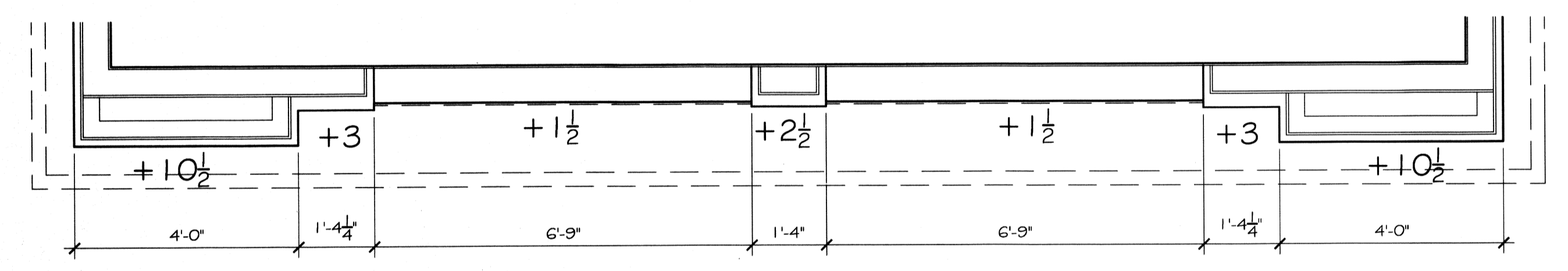


8 ELEVATION DETAILS
SCALE: 1/2" = 1'-0"

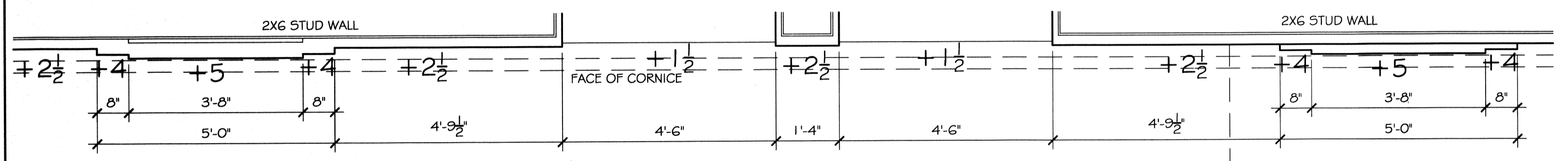


10 ELEVATION DETAILS
SCALE: 1/2" = 1'-0"

EXTERIOR ELEVATION DETAILS



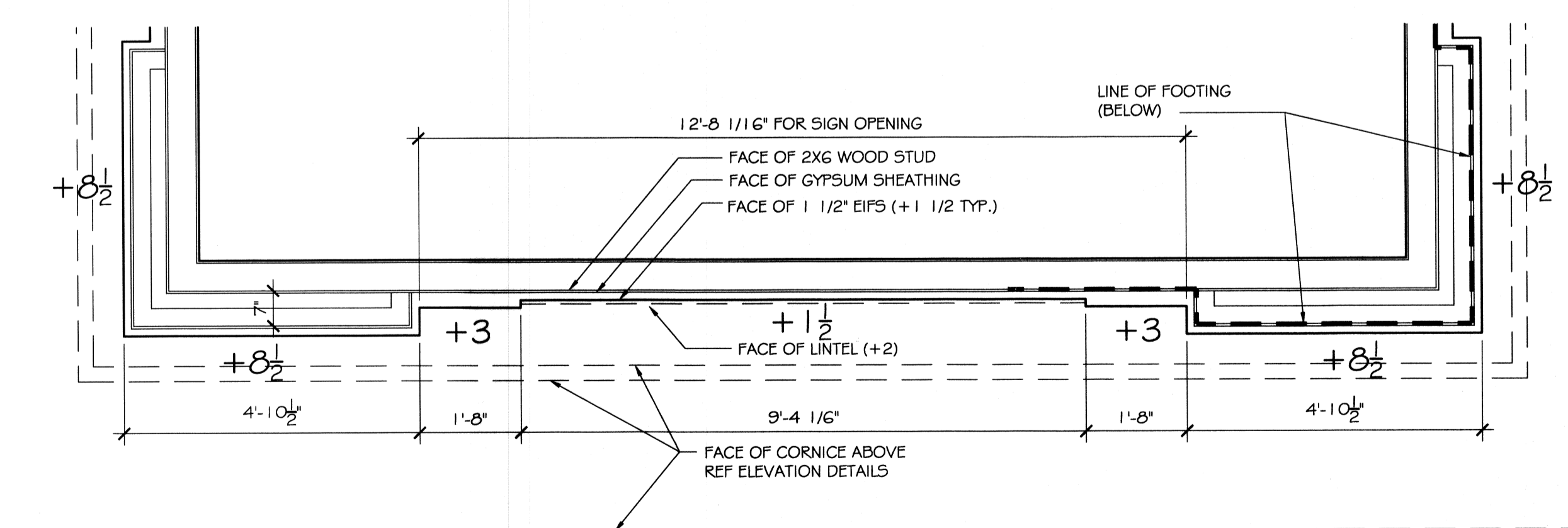
6 EXTERIOR PLAN DETAILS (FRONT CENTER PEDIMENT)
SCALE: 1/2" = 1'-0"



5 EXTERIOR PLAN DETAILS
SCALE: 1/2" = 1'-0"

EXTERIOR PLAN DETAILS

NOTE
FACE OF SHEATHING IS [+0] FOR THE PURPOSE OF DETERMINING THE EIFS THICKNESS - EIFS THICKNESS NOT TO EXCEED 4" - FRAMING REQUIRED AT ALL LOCATIONS WHERE EIFS THICKNESS IS GREATER THAN [+4]



7 EXTERIOR PLAN DETAILS (TOWER)
SCALE: 1/2" = 1'-0"

417528
REVIEWED FOR
STATE FIRE MARSHAL
AS PER REVIEW LETTER
BY: MARGARET HILL, ARCHITECT
Margaret Hill