

DAMMON ENGINEERING, INC.

CHIEF ENGINEER
EMMETT
DAMMON, P.E.

CHIEF ARCHITECT
ROBERT
WILTSE

554 OLD SPANISH TRAIL
SLIDELL, LA. 70458
OFFICE: 985-649-5832
FAX: 985-641-5950

WEBSITE:
WWW.DAMMONENGINEERING.COM

EMAIL:
DAMMONENG@BELLSOUTH.NET

ARCHITECTURE

ENGINEERING

STUDIES

PLANNING

INVESTIGATION

EXPERT WITNESS

LA QUINTA
INN & SUITES

SPORTSMAN PARK
LOT 14
CABLE'S PARKWAY
GONZALES
LOUISIANA

ROOF
PLAN

REV:

SCALE: AS NOTED

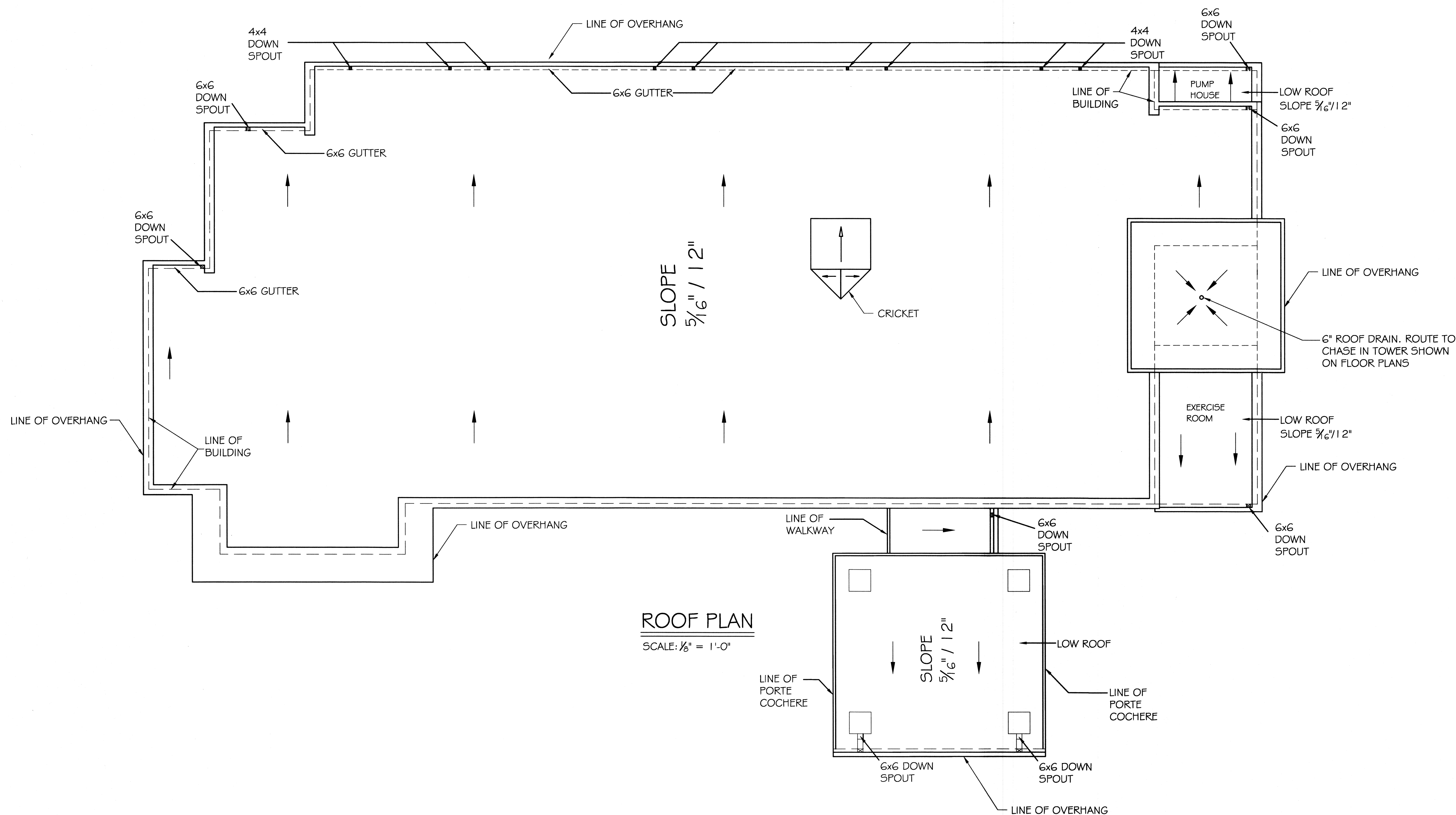
JOB#: 2141

DATE: 07-03-12

SHEET 13

A-8

OF 36



ROOF PLAN

SCALE: 1/8" = 1'-0"

417528
REVIEWED FOR
STATE FIRE MARSHAL
AS PER REVIEW LETTER
BY MARGARET HILL, ARCHITECT

Margaret Hill