

DAMMON
ENGINEERING, INC.

CHIEF ENGINEER
EMMETT
DAMMON, P.E.

CHIEF ARCHITECT
ROBERT
WILTSE

554 OLD SPANISH TRAIL
SLIDELL, LA. 70458
OFFICE: 985-649-5832
FAX: 985-641-5950

WEBSITE:
WWW.DAMMONENGINEERING.COM

EMAIL:
DAMMONENG@BELLSOUTH.NET

ARCHITECTURE
ENGINEERING
STUDIES
PLANNING
INVESTIGATION
EXPERT WITNESS

LA QUINTA
INN & SUITES

SPORTSMAN PARK
LOT 14
CABLEA'S PARKWAY
GONZALES
LOUISIANA

2ND, 3RD, & 4TH
FLR ELEC PLAN

REV:

Robert Wiltse

SCALE: AS NOTED

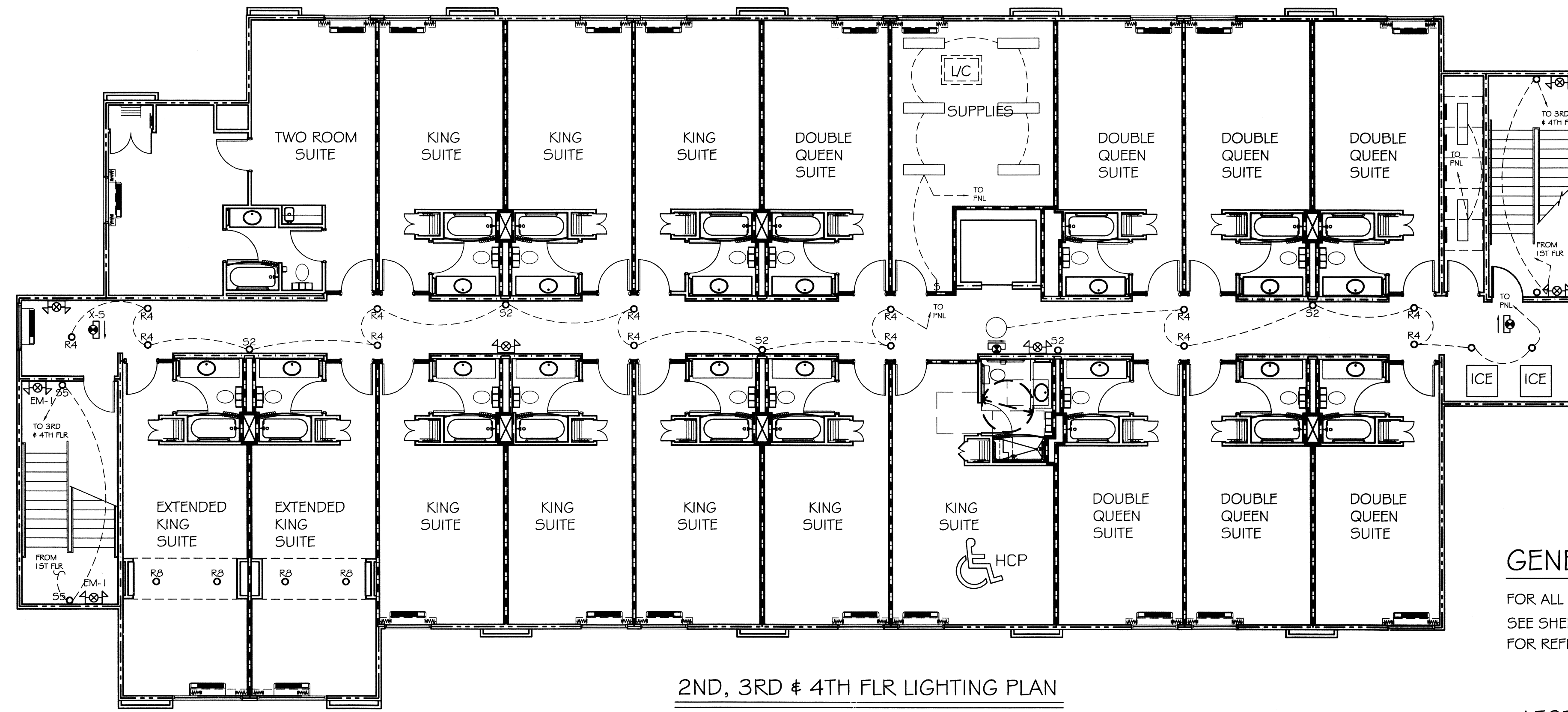
JOB#: 2141

DATE: 07-03-12

SHEET 31

E-2

OF 36



2ND, 3RD & 4TH FLR LIGHTING PLAN

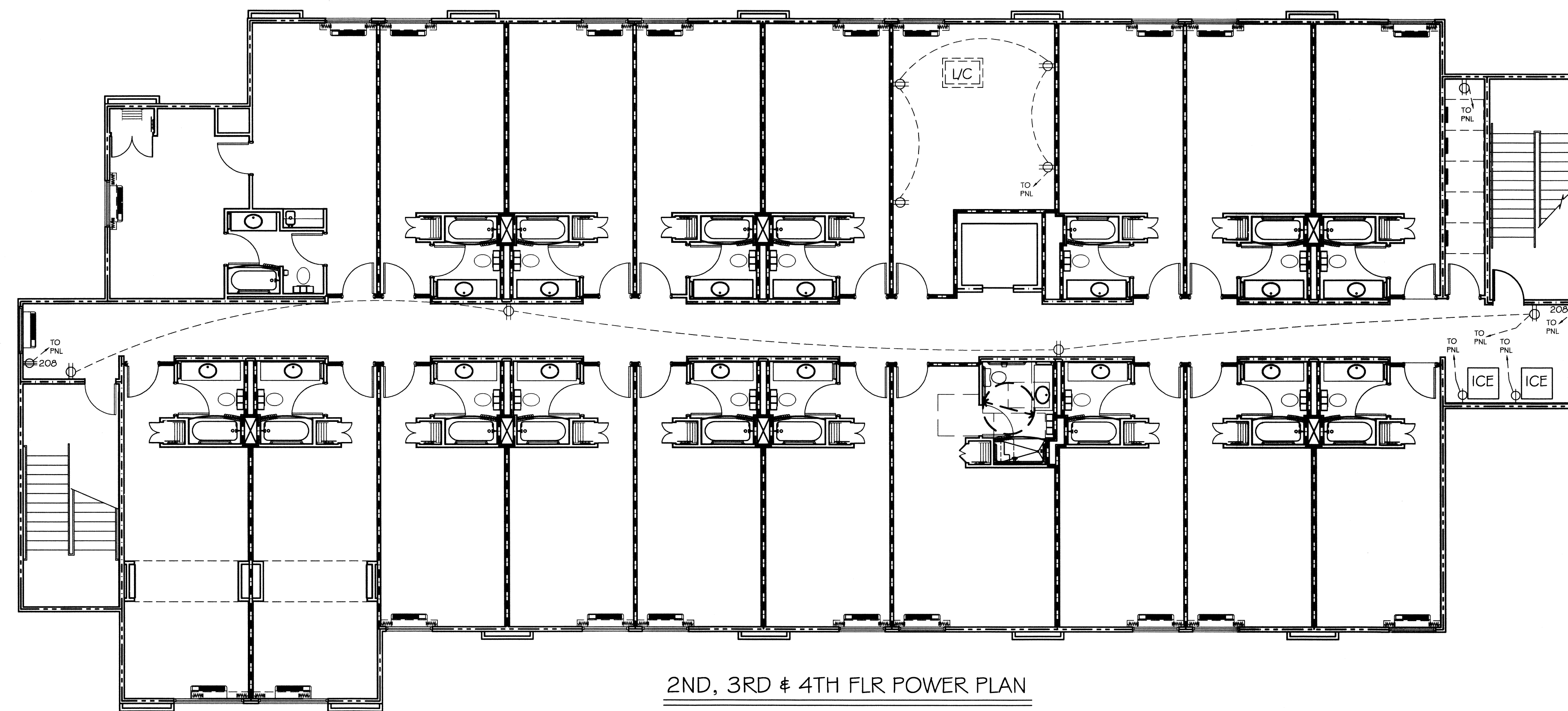
SCALE: 1/8" = 1'-0"

GENERAL NOTES:

FOR ALL POWER AND LIGHTING LOCATIONS IN SUITES
SEE SHEETS A-13, A-14, A-15, A-16, A-17, A-18, A-19, A-20, A-21 & A-22
FOR REFERENCE. VERIFY ALL LOCATIONS WITH OWNER.

LEGEND

- 1 HOUR RATED INTERIOR WALL
SEE UL# U333- SHEET A-2
- 1 HOUR RATED EXTERIOR WALL
SEE UL# U356- SHEET A-2



2ND, 3RD & 4TH FLR POWER PLAN

SCALE: 1/8" = 1'-0"

417528

REVIEWED FOR
STATE FIRE MARSHAL
AS PER REVIEW LETTER
BY: MARGARET HILL, ARCHITECT
Margaret Hill