

DAMMON ENGINEERING, INC.

CHIEF ENGINEER
EMMETT
DAMMON, P.E.

CHIEF ARCHITECT
ROBERT
WILTSE

554 OLD SPANISH TRAIL
SLIDELL, LA. 70458
OFFICE: 985-649-5832
FAX: 985-641-5950

WEBSITE:
WWW.DAMMONENGINEERING.COM

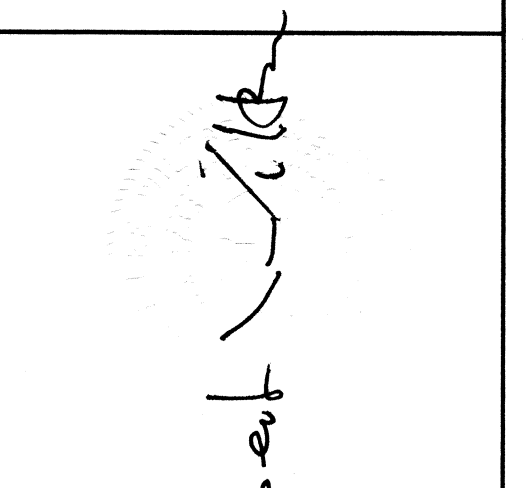
EMAIL:
DAMMONENG@BELLSOUTH.NET

- ARCHITECTURE
- ENGINEERING
- STUDIES
- PLANNING
- INVESTIGATION
- EXPERT WITNESS

LA QUINTA
INN & SUITES

SPORTSMAN PARK
LOT 14
CABLEA'S PARKWAY
GONZALES
LOUISIANA

GROUND FLOOR
PLUMBING PLAN



REV:

SCALE: AS NOTED

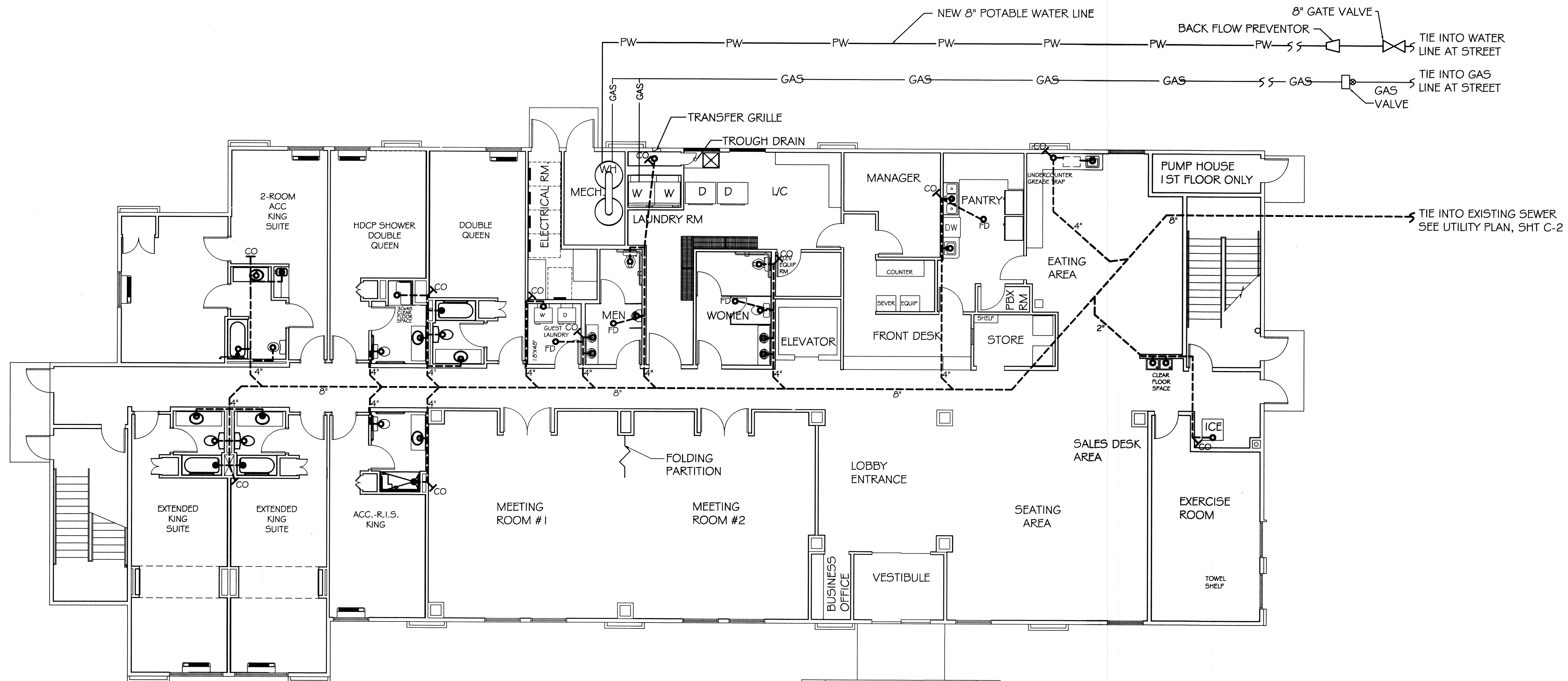
JOB#: 2141

DATE: 07-03-12

SHEET 34

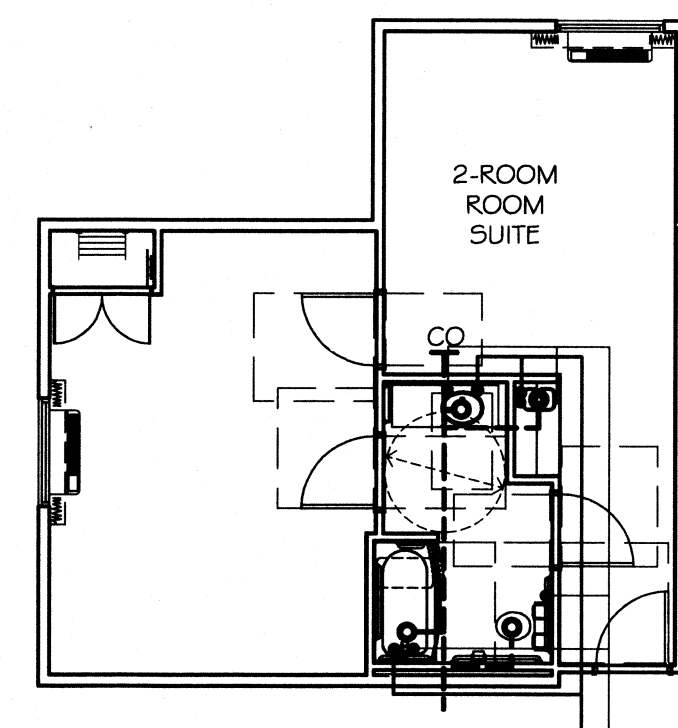
P-1

OF 36

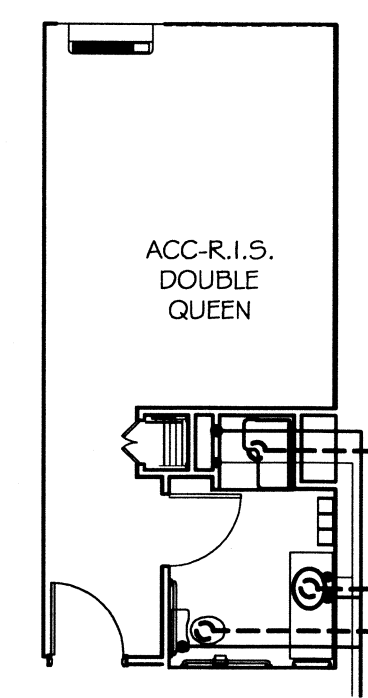


GROUND FLR PLUMBING PLAN

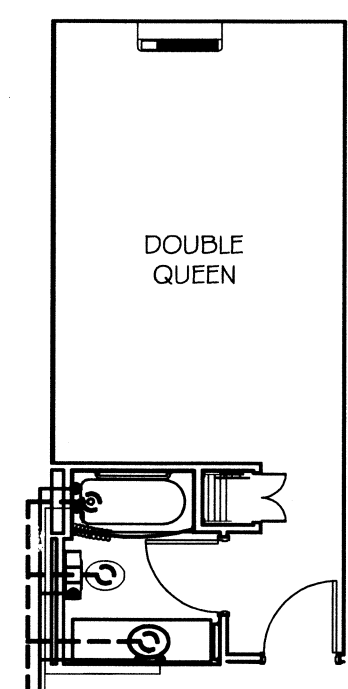
SCALE: 1/8"=1'-0"



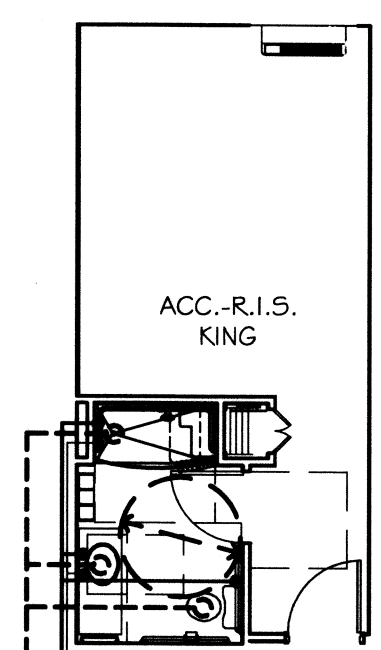
PLUMBING PLAN
2- ROOM ACC- TWO RM SUITE
SCALE: 1/8"=1'-0"



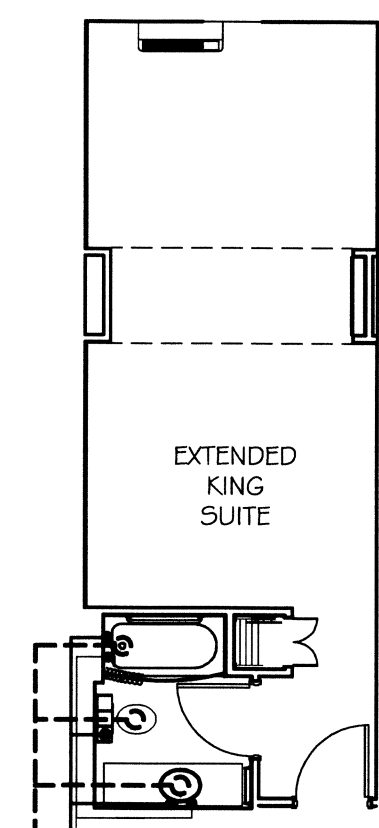
PLUMBING PLAN
DOUBLE QUEEN
HANDICAP SHOWER
SCALE: 1/8"=1'-0"



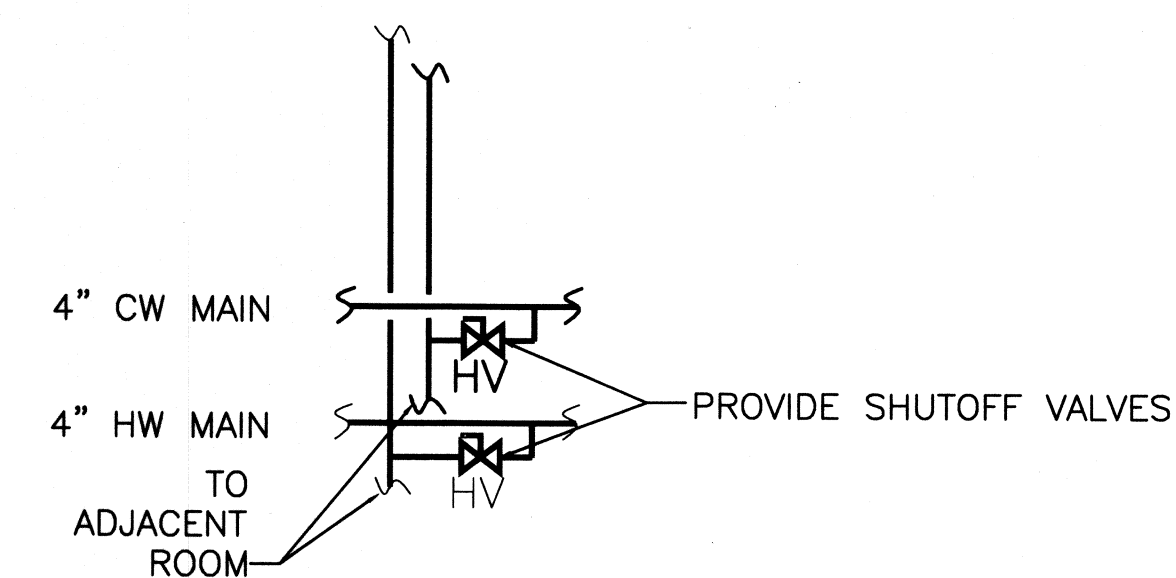
PLUMBING PLAN
DOUBLE QUEEN
SCALE: 1/8"=1'-0"



PLUMBING PLAN
ACC-RIS - KING
SCALE: 1/8"=1'-0"



PLUMBING PLAN
EXTENDED KING SUITE
SCALE: 1/8"=1'-0"



TYPICAL SUITE
SHUTOFF VALVE DETAIL
N.T.S.

417528

REVIEWED FOR
STATE FIRE MARSHAL
AS PER REVIEW LETTER
BY: MARGARET HILL, ARCHITECT
Margaret Hill