

**DAMMON**  
ENGINEERING, INC.

CHIEF ENGINEER  
EMMETT  
DAMMON, P.E.

CHIEF ARCHITECT  
ROBERT  
WILTSE

554 OLD SPANISH TRAIL  
SUDELL, LA, 70458  
OFFICE: 985-649-5832  
FAX: 985-641-5950

WEBSITE:  
WWW.DAMMONENGINEERING.COM

EMAIL:  
DAMMONENG@BELLFLOWTH.NET

ARCHITECTURE  
ENGINEERING  
STUDIES  
PLANNING  
INVESTIGATION  
EXPERT WITNESS

LA QUINTA  
INN & SUITES

SPORTSMAN PARK  
LOT 14  
CABLEAS PARKWAY  
GONZALES  
LOUISIANA

BUILDING  
SECTION

REV:

SCALE: AS NOTED

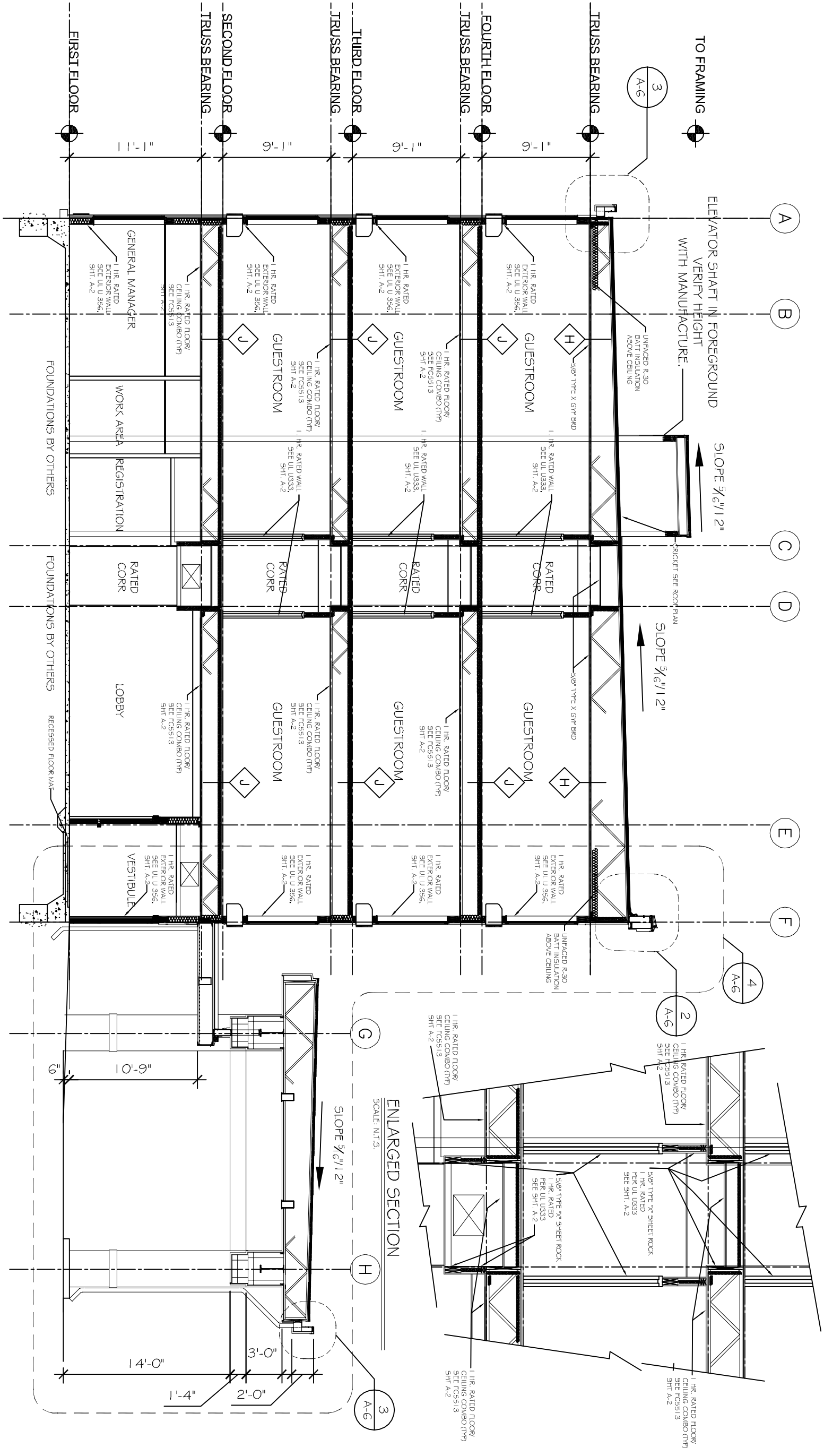
JOB#: 2141

DATE: 07-03-12

SHEET 10

A-5

OF 36



**SECTION @ LOBBY ENTRANCE**  
SCALE: 1/4" = 1'-0"

- NOTES:
1. THIS DRAWING IS USED TO SHOW SPATIAL RELATIONSHIPS. REFER TO WALL SECTIONS, STRUCTURAL DRAWINGS, AND DETAILS FOR MORE DETAILED INFORMATION.
  2. PRE-ENGINEERING FLOOR & ROOF SYSTEM TRUSSES BY OTHERS. INSTALL AND PROVIDE A COMPLETE FIRE RATED FLOOR AND CEILING ASSEMBLY PER MANUFACTURERS RECOMMENDATIONS.