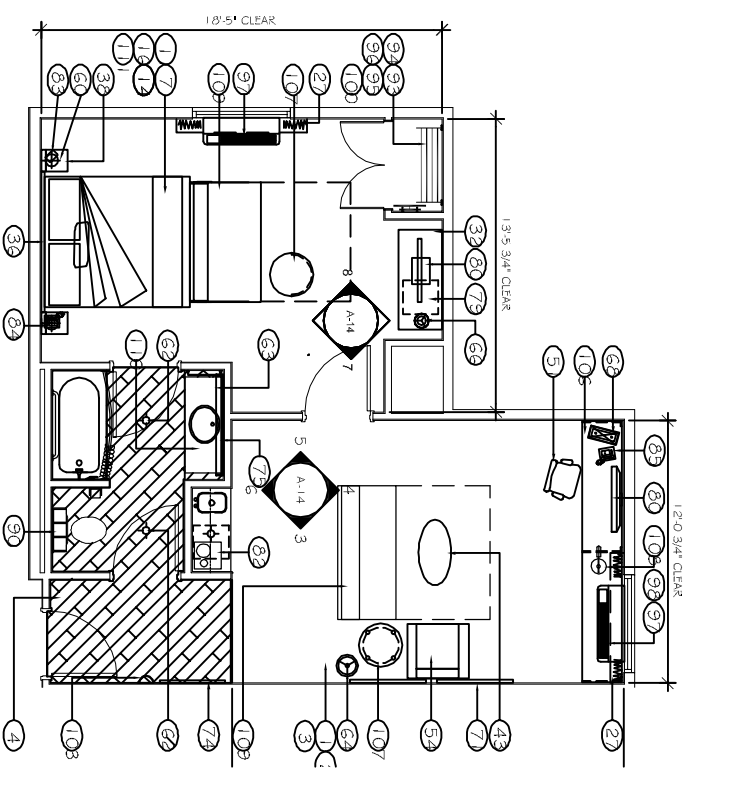
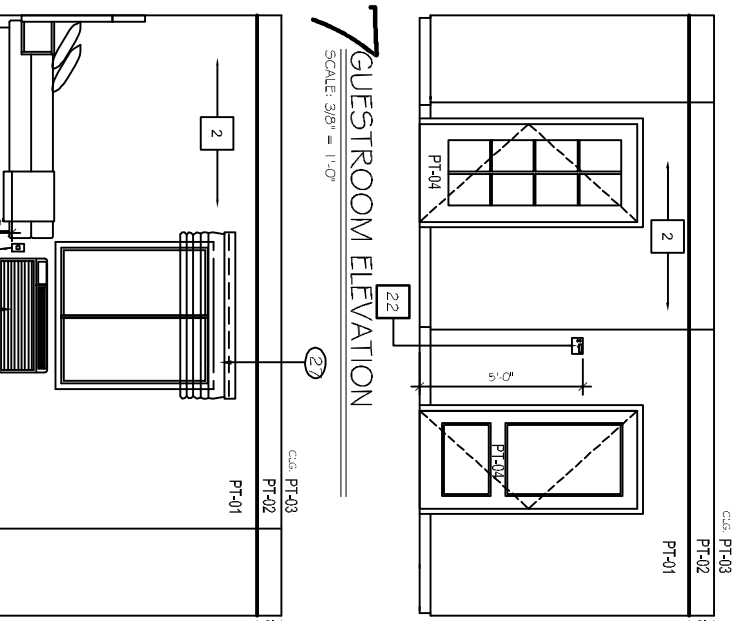


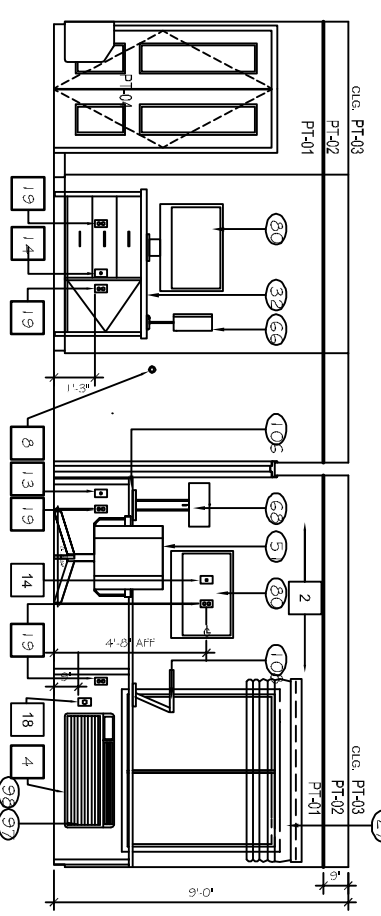
1 DIMENSIONAL CONTROL PLAN
SCALE: 1/4" = 1'-0"



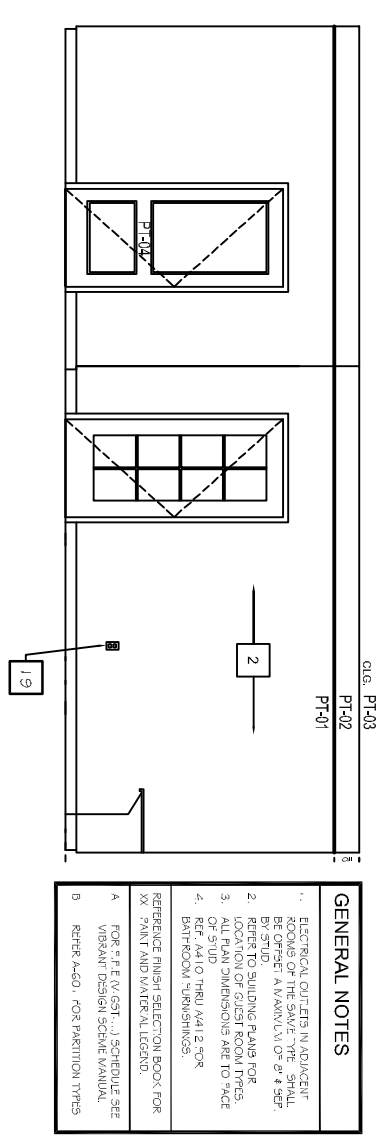
2 FURNITURE PLAN
SCALE: 1/4" = 1'-0"



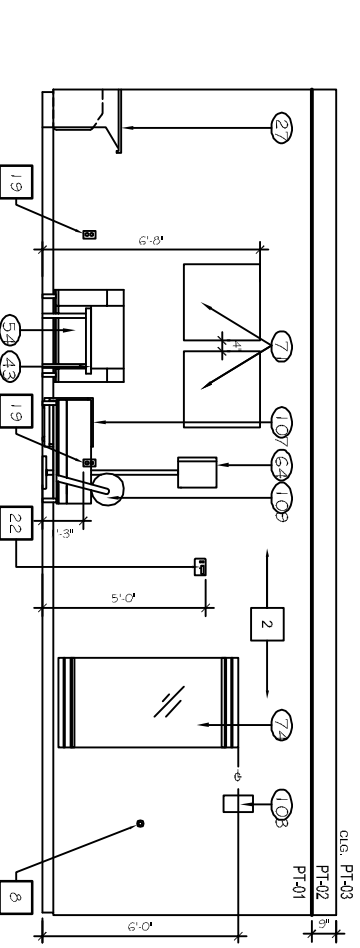
8 GUESTROOM ELEVATION
SCALE: 3/8" = 1'-0"



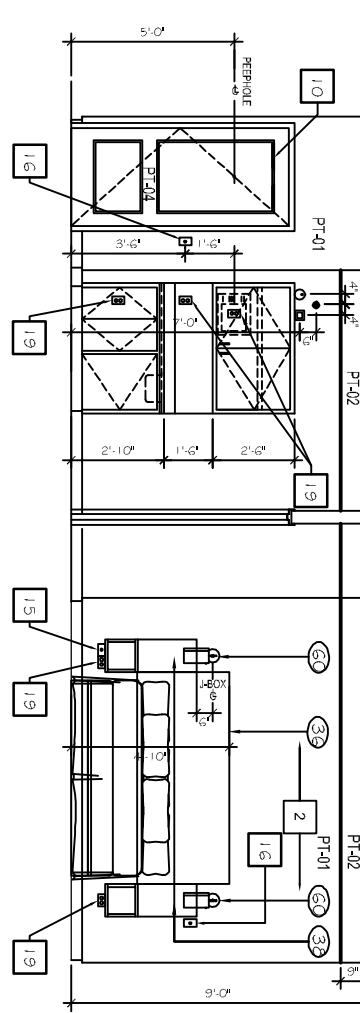
3 GUESTROOM ELEVATION
SCALE: 3/8" = 1'-0"



5 GUESTROOM ELEVATION
SCALE: 3/8" = 1'-0"



4 GUESTROOM ELEVATION
SCALE: 3/8" = 1'-0"



6 GUESTROOM ELEVATION
SCALE: 3/8" = 1'-0"

DRAWING NOTES

1. INITIAL ELEVATIONS.
2. VERTICAL WOOD FLOORING TO BE INSTALLED AT 48" FROM THE ROOM AXIS. DETERMINE STARTING POINT FOR EACH ROW SO AS TO MAINTAIN A MINIMUM 12" LONG PIECE AT EDGES.

GENERAL NOTES

1. ELECTRICAL OUTLETS IN ADJACENT ROOMS OF THE SAME TYPE SHALL BE SET A MAXIMUM OF 24" SEPARATED BY STUD.
2. REFER TO BUILDING PLANS FOR LOCATION OF GUEST ROOM TYPES.
3. ALL MAIN DIMENSIONS ARE TO FACE.
4. REF. MAIL ROOM MAIL 2 FOR BATHROOM "SHIRTSHINES".

REFERENCE FINISH SELECTION BOOK FOR:

- A. FLOOR FINISH (V.0591) SCHEDULE SEE VIBRANT DESIGN SCHEME MANUAL
- B. REFER A-401 FOR PARTITION TYPES

ITEM	DESCRIPTION	QTY	UNIT
001	CARPET / FLOORING (800)		
002	DISTRIBUTION CABINET	V-057-204-CP	
003	DESK	V-057-204-DE	
004	CHAIR	V-057-204-CH	
005	TABLE	V-057-204-TA	
006	TELEPHONE (100)	V-057-204-TE	
007	CONCRETE PARTITION WALL	V-057-204-CP	
008	CONCRETE PARTITION WALL	V-057-204-CP	
009	CONCRETE PARTITION WALL	V-057-204-CP	
010	CONCRETE PARTITION WALL	V-057-204-CP	
011	CONCRETE PARTITION WALL	V-057-204-CP	
012	CONCRETE PARTITION WALL	V-057-204-CP	
013	CONCRETE PARTITION WALL	V-057-204-CP	
014	CONCRETE PARTITION WALL	V-057-204-CP	
015	CONCRETE PARTITION WALL	V-057-204-CP	
016	CONCRETE PARTITION WALL	V-057-204-CP	
017	CONCRETE PARTITION WALL	V-057-204-CP	
018	CONCRETE PARTITION WALL	V-057-204-CP	
019	CONCRETE PARTITION WALL	V-057-204-CP	
020	CONCRETE PARTITION WALL	V-057-204-CP	
021	CONCRETE PARTITION WALL	V-057-204-CP	
022	CONCRETE PARTITION WALL	V-057-204-CP	
023	CONCRETE PARTITION WALL	V-057-204-CP	
024	CONCRETE PARTITION WALL	V-057-204-CP	
025	CONCRETE PARTITION WALL	V-057-204-CP	
026	CONCRETE PARTITION WALL	V-057-204-CP	
027	CONCRETE PARTITION WALL	V-057-204-CP	
028	CONCRETE PARTITION WALL	V-057-204-CP	
029	CONCRETE PARTITION WALL	V-057-204-CP	
030	CONCRETE PARTITION WALL	V-057-204-CP	
031	CONCRETE PARTITION WALL	V-057-204-CP	
032	CONCRETE PARTITION WALL	V-057-204-CP	
033	CONCRETE PARTITION WALL	V-057-204-CP	
034	CONCRETE PARTITION WALL	V-057-204-CP	
035	CONCRETE PARTITION WALL	V-057-204-CP	
036	CONCRETE PARTITION WALL	V-057-204-CP	
037	CONCRETE PARTITION WALL	V-057-204-CP	
038	CONCRETE PARTITION WALL	V-057-204-CP	
039	CONCRETE PARTITION WALL	V-057-204-CP	
040	CONCRETE PARTITION WALL	V-057-204-CP	
041	CONCRETE PARTITION WALL	V-057-204-CP	
042	CONCRETE PARTITION WALL	V-057-204-CP	
043	CONCRETE PARTITION WALL	V-057-204-CP	
044	CONCRETE PARTITION WALL	V-057-204-CP	
045	CONCRETE PARTITION WALL	V-057-204-CP	
046	CONCRETE PARTITION WALL	V-057-204-CP	
047	CONCRETE PARTITION WALL	V-057-204-CP	
048	CONCRETE PARTITION WALL	V-057-204-CP	
049	CONCRETE PARTITION WALL	V-057-204-CP	
050	CONCRETE PARTITION WALL	V-057-204-CP	
051	CONCRETE PARTITION WALL	V-057-204-CP	
052	CONCRETE PARTITION WALL	V-057-204-CP	
053	CONCRETE PARTITION WALL	V-057-204-CP	
054	CONCRETE PARTITION WALL	V-057-204-CP	
055	CONCRETE PARTITION WALL	V-057-204-CP	
056	CONCRETE PARTITION WALL	V-057-204-CP	
057	CONCRETE PARTITION WALL	V-057-204-CP	
058	CONCRETE PARTITION WALL	V-057-204-CP	
059	CONCRETE PARTITION WALL	V-057-204-CP	
060	CONCRETE PARTITION WALL	V-057-204-CP	
061	CONCRETE PARTITION WALL	V-057-204-CP	
062	CONCRETE PARTITION WALL	V-057-204-CP	
063	CONCRETE PARTITION WALL	V-057-204-CP	
064	CONCRETE PARTITION WALL	V-057-204-CP	
065	CONCRETE PARTITION WALL	V-057-204-CP	
066	CONCRETE PARTITION WALL	V-057-204-CP	
067	CONCRETE PARTITION WALL	V-057-204-CP	
068	CONCRETE PARTITION WALL	V-057-204-CP	
069	CONCRETE PARTITION WALL	V-057-204-CP	
070	CONCRETE PARTITION WALL	V-057-204-CP	
071	CONCRETE PARTITION WALL	V-057-204-CP	
072	CONCRETE PARTITION WALL	V-057-204-CP	
073	CONCRETE PARTITION WALL	V-057-204-CP	
074	CONCRETE PARTITION WALL	V-057-204-CP	
075	CONCRETE PARTITION WALL	V-057-204-CP	
076	CONCRETE PARTITION WALL	V-057-204-CP	
077	CONCRETE PARTITION WALL	V-057-204-CP	
078	CONCRETE PARTITION WALL	V-057-204-CP	
079	CONCRETE PARTITION WALL	V-057-204-CP	
080	CONCRETE PARTITION WALL	V-057-204-CP	
081	CONCRETE PARTITION WALL	V-057-204-CP	
082	CONCRETE PARTITION WALL	V-057-204-CP	
083	CONCRETE PARTITION WALL	V-057-204-CP	
084	CONCRETE PARTITION WALL	V-057-204-CP	
085	CONCRETE PARTITION WALL	V-057-204-CP	
086	CONCRETE PARTITION WALL	V-057-204-CP	
087	CONCRETE PARTITION WALL	V-057-204-CP	
088	CONCRETE PARTITION WALL	V-057-204-CP	
089	CONCRETE PARTITION WALL	V-057-204-CP	
090	CONCRETE PARTITION WALL	V-057-204-CP	
091	CONCRETE PARTITION WALL	V-057-204-CP	
092	CONCRETE PARTITION WALL	V-057-204-CP	
093	CONCRETE PARTITION WALL	V-057-204-CP	
094	CONCRETE PARTITION WALL	V-057-204-CP	
095	CONCRETE PARTITION WALL	V-057-204-CP	
096	CONCRETE PARTITION WALL	V-057-204-CP	
097	CONCRETE PARTITION WALL	V-057-204-CP	
098	CONCRETE PARTITION WALL	V-057-204-CP	
099	CONCRETE PARTITION WALL	V-057-204-CP	
100	CONCRETE PARTITION WALL	V-057-204-CP	

ITEM	DESCRIPTION	QTY	UNIT
101	ART (MIRRORS 100)	V-057-204-AR	
102	FRAMED ARTWORK IN GUESTROOM	V-057-204-AR	
103	FRAMED ARTWORK IN GUESTROOM	V-057-204-AR	
104	FRAMED ARTWORK IN GUESTROOM	V-057-204-AR	
105	FRAMED ARTWORK IN GUESTROOM	V-057-204-AR	
106	FRAMED ARTWORK IN GUESTROOM	V-057-204-AR	
107	FRAMED ARTWORK IN GUESTROOM	V-057-204-AR	
108	FRAMED ARTWORK IN GUESTROOM	V-057-204-AR	
109	FRAMED ARTWORK IN GUESTROOM	V-057-204-AR	
110	FRAMED ARTWORK IN GUESTROOM	V-057-204-AR	
111	FRAMED ARTWORK IN GUESTROOM	V-057-204-AR	
112	FRAMED ARTWORK IN GUESTROOM	V-057-204-AR	
113	FRAMED ARTWORK IN GUESTROOM	V-057-204-AR	
114	FRAMED ARTWORK IN GUESTROOM	V-057-204-AR	
115	FRAMED ARTWORK IN GUESTROOM	V-057-204-AR	
116	FRAMED ARTWORK IN GUESTROOM	V-057-204-AR	
117	FRAMED ARTWORK IN GUESTROOM	V-057-204-AR	
118	FRAMED ARTWORK IN GUESTROOM	V-057-204-AR	
119	FRAMED ARTWORK IN GUESTROOM	V-057-204-AR	
120	FRAMED ARTWORK IN GUESTROOM	V-057-204-AR	
121	FRAMED ARTWORK IN GUESTROOM	V-057-204-AR	
122	FRAMED ARTWORK IN GUESTROOM	V-057-204-AR	
123	FRAMED ARTWORK IN GUESTROOM	V-057-204-AR	
124	FRAMED ARTWORK IN GUESTROOM	V-057-204-AR	
125	FRAMED ARTWORK IN GUESTROOM	V-057-204-AR	
126	FRAMED ARTWORK IN GUESTROOM	V-057-204-AR	
127	FRAMED ARTWORK IN GUESTROOM	V-057-204-AR	
128	FRAMED ARTWORK IN GUESTROOM	V-057-204-AR	
129	FRAMED ARTWORK IN GUESTROOM	V-057-204-AR	
130	FRAMED ARTWORK IN GUESTROOM	V-057-204-AR	
131	FRAMED ARTWORK IN GUESTROOM	V-057-204-AR	
132	FRAMED ARTWORK IN GUESTROOM	V-057-204-AR	
133	FRAMED ARTWORK IN GUESTROOM	V-057-204-AR	
134	FRAMED ARTWORK IN GUESTROOM	V-057-204-AR	
135	FRAMED ARTWORK IN GUESTROOM	V-057-204-AR	
136	FRAMED ARTWORK IN GUESTROOM	V-057-204-AR	
137	FRAMED ARTWORK IN GUESTROOM	V-057-204-AR	
138	FRAMED ARTWORK IN GUESTROOM	V-057-204-AR	
139	FRAMED ARTWORK IN GUESTROOM	V-057-204-AR	
140	FRAMED ARTWORK IN GUESTROOM	V-057-204-AR	
141	FRAMED ARTWORK IN GUESTROOM	V-057-204-AR	
142	FRAMED ARTWORK IN GUESTROOM	V-057-204-AR	
143	FRAMED ARTWORK IN GUESTROOM	V-057-204-AR	
144	FRAMED ARTWORK IN GUESTROOM	V-057-204-AR	
145	FRAMED ARTWORK IN GUESTROOM	V-057-204-AR	
146	FRAMED ARTWORK IN GUESTROOM	V-057-204-AR	
147	FRAMED ARTWORK IN GUESTROOM	V-057-204-AR	
148	FRAMED ARTWORK IN GUESTROOM	V-057-204-AR	
149	FRAMED ARTWORK IN GUESTROOM	V-057-204-AR	
150	FRAMED ARTWORK IN GUESTROOM	V-057-204-AR	

DAMMON ENGINEERING, INC.
 CHIEF ENGINEER
 EMILY DAMMON, P.E.
 CHIEF ARCHITECT
 ROBERT WILTSE

554 OLD SPANISH TRAIL
 SUITE 100
 SUDELL, LA. 70458
 OFFICE: 995-649-5832
 FAX: 995-641-5950

WEBSITE:
 WWW.DAMMONENGINEERING.COM

EMAIL:
 DAMMONENG@BELL.SU.CM.NET

ARCHITECTURE
 ENGINEERING
 STUDIES
 PLANNING
 INVESTIGATION
 EXPERT WITNESS

SPORTSMAN PARK
 LOT 14
 CABLEAS PARKWAY
 GONZALES
 LOUISIANA

TWO ROOM
 SUITE

REV:

SCALE: AS NOTED

JOB#: 2141

DATE: 07-03-12

SHEET 19

A-14

OF 36